





## Sweet Charity Cast Mic Notes

<p><b>Yna Tresvalles</b> She/Her</p> <p>Charity Hope Valentine</p>	
<p>GEN-</p> <ul style="list-style-type: none"><li>★ Pink headband, front of head</li><li>★ Medium Dark Hair</li><li>★ Pack in right hip for upside down lift in opening scene.</li></ul> <p>BRASS BAND-</p> <ul style="list-style-type: none"><li>★ White brass band hat</li></ul> <p>POMPEI CLUB-</p> <ul style="list-style-type: none"><li>★</li></ul> <p>ROL -</p> <ul style="list-style-type: none"><li>★</li></ul> <p>FARNDALE-</p> <ul style="list-style-type: none"><li>★ A</li></ul>	

<p><b>Eden Barrie</b> She/Her</p> <p>Nicky Pignatelli</p>	
<p>GEN -</p> <ul style="list-style-type: none"><li>★ Long Brown Hair</li></ul> <p>NYC-</p> <ul style="list-style-type: none"><li>★ Ponytail with a big bow</li></ul> <p>BRASS BAND-</p> <ul style="list-style-type: none"><li>★ Black and pink brass band hat</li></ul> <p>POMPEI CLUB-</p> <ul style="list-style-type: none"><li>★</li></ul>	



ROL-



FARNDALE-

- ★ Halter neck orange dress

**Matthew Don**

He/Him

Marvin / Ensemble



GEN-



NYC -

- ★ Brown fedora(?) on top of head
- ★ Brown flatcap...? Sitting forward on head.

BRASS BAND-

- ★ Black and pink brass band hat

POMPEI CLUB-



ROL-



FARNDALE-



**Alice Rose Creasey**

She/Her

Suzanne  
Dance captain





GEN -

- ★ Long blonde hair, dark roots

NYC -

- ★ Sunglasses on front/top of head
- ★ Scarf on head covering hair

BRASS BAND-

- ★ Black and pink brass band hat

POMPEI CLUB-

- ★

ROL -

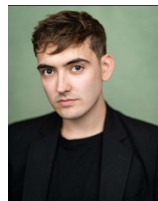
FARNDALE-

- ★

**Kyle Doney**

He/Him

Vittorio Vidal



NYC -

- ★ Brown fedora(?) on the front of head
- ★ Four(?) potential hats

BRASS BAND-

- ★ Black and pink brass band hat

POMPEI CLUB-

- ★



ROL-



FARNDALE-

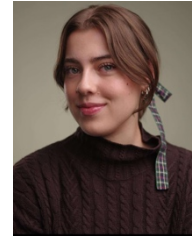


**Catriona Gauld**

She/Her

Helene

Understudy – Charity Valentine



GEN-

- ★ Long Brown Hair

BRASS BAND-

- ★ Black and pink brass band hat

POMPEI CLUB-



ROL-



FARNDALE-

- ★ Red Sparkly Dress (Backless)
- ★ Thick tight red choker necklace

**Finlay Mackay**

He/Him

Herman



GEN -

- ★ Curly hair
- ★ Particularly short hair at the back, cropped close to the head

NYC -

- ★ Backwards baseball cap on


BRASS BAND-

- ★ Black and pink brass band hat

POMPEI CLUB-



★  
ROL-  
★  
FARNDALE-  
★

<p><b>Gregor McMillan</b> He/They</p> <p>Charlie Understudy – Vittorio &amp; Daddy Brubeck</p>	
--	---

GEN-  
★ Blonde highlight in hair, silked back  
★ Length curly at back


NYC-  
★ Brown fedora(?) at a slightly jaunty angle to one side  
★ Police Hat in Coney Island

BRASS BAND-  
★ Black and pink brass band hat

POMPEI CLUB-  
★

ROL-  
★

FARNDALE-  
★ Yellow halter neck  
★ Police hat(?)

<p><b>Camila Lopez Davila</b> She/Her</p> <p>Carmen</p>	
---	---



GEN-

- ★ Curly hair will need to be more cautious with head mic placements
- ★ Pink pointy princess hat

BRASS BAND-

- ★ Black and pink brass band hat

POMPEI CLUB-

- ★

ROL-

- ★

FARNDALE-

- ★

**Nathan Morris**

He/Him

Ensemble



GEN-

- ★

NYC-

- ★ Brown fedora/bowler cap coming over the front of the eyes on top of head.

BRASS BAND-

- ★ Black and pink brass band hat

POMPEI CLUB-

- ★

ROL-

- ★

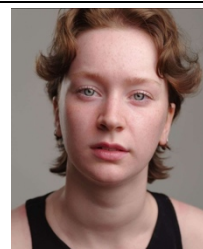
FARNDALE-

- ★ Police hat

**Ava MacKinnon**

She/Her

Rosie,  
Understudy - Usula March





GEN-

- ★ Shorter textured hair

NYC-

- ★ Brown beret sitting on the top of her head

BRASS BAND-

- ★ Blonde wig with black and pink brass band hat on

POMPEI CLUB-

- ★

ROL-

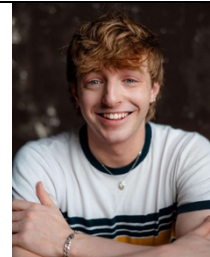
- ★

FARNDALE-

- ★ Pink Dress (Backless)
- ★ Belt pack or costume may potentially sew a pocket in.
- ★ Wig

**Ronan O'Hara**  
He/They

Daddy Brubeck / Ensemble  
Music Captain



GEN-

- ★ Longer more textured hair

NYC-

- ★ White bakers hat
- ★ Greek fisherman hat with fringe pushed back.
- ★ Big round glasses potentially

BRASS BAND-

- ★ Black and pink brass band hat

POMPEI CLUB-

- ★

ROL-

- ★ Headband, maybe will need to move mic lower or bandanna higher.
- ★ Is also shirtless

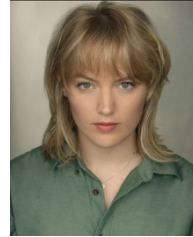
FARNDALE -

- ★ Short Purple Dress (full back)



**Ebba Mård Andersson**  
She/Her

Frenchy / Elaine  
Understudy - Helene



GEN -

- ★ Blonde fringe covers forehead
- ★ Straight medium length hair

NYC-

- ★ Big pearls round neck potentially

BRASS BAND-

- ★ Black and pink brass band hat

POMPEI CLUB-

- ★

ROL-

FARNDALE -

- ★ Red Tube top and headband
- ★ Mic pocket in tube top
- ★ Thick red choker(?) tie(?)

**George Shuter**  
He/Him

Oscar Lindquist



GEN-

- ★

NYC-

- ★ Brown fedora(?) slightly on one side of the head rather than top

BRASS BAND-

- ★ Not(?) in this number

POMEPEI CLUB-

- ★





ROL-

- ★ Jaunty brown fedora on head
- ★ Fringe pushed back under hat

FARNDALE-

★

**Alexander (Alex) Suguitan**  
He/Him

Ensemble  
Understudy Oscar Lindquist



GEN -

★

NYC -

- ★ Bunte Cap slightly angled upwards.

BRASS BAND-

- ★ Black and pink brass band hat

POMPEI CLUB-

★

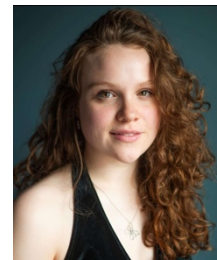
ROL-

★

FARNDALE-

★

**Mackenzie Wilcox**  
She/Her  
Ursula March  
Understudy Nikki





GEN -

- ★ Curly hair, medium, brown

NYC -

- ★ Brown hat(?) with black elastic straps coming down.

BRASS BAND-

- ★ Black and pink brass band hat

POMPEI CLUB-

- ★ Backless sparkly dress, need to re tape mic cable
- ★ Mic pack on bra
- ★ Brown shorter wig
- ★ Potential volume on wig for fringe placement

ROL-

- ★

FARNDALE-

- ★

Notes -

- ★ Ronan, Matthew, George, Alex, Gregor, Nathan, Findlay, Kyle all switch headwear and will have 1-2 differing hats, to define different NYC characters.
- ★ Coney Island number requires hats/headwear being secure to the head.
- ★ Nathan and Kyle don't wear hats in the coney island number.
- ★ Mic Belts under blacks
- ★ Ensure packs are properly secured for difficult lifts

Questions-

- ★ Bouffant hair style may be difficult to mic. Who has their hair up and who remains with it down.
- ★ Cat hair up or down?
- ★ Will Gregors hair remained slicked back, and will the blonde bit stay? A - Yes
- ★ Will any of the guys be getting haircuts before the show and if so how short will they be?
- ★ Ava fandago dress mic placement? A – Costume to look at

TAP SHOES

- ★ YNA MAY POTENTIALLY NEED HER TAP SHOES MICED
- ★ Everyone has tap shoes on for BRASS BAND number
- ★ George is not involved in brass band