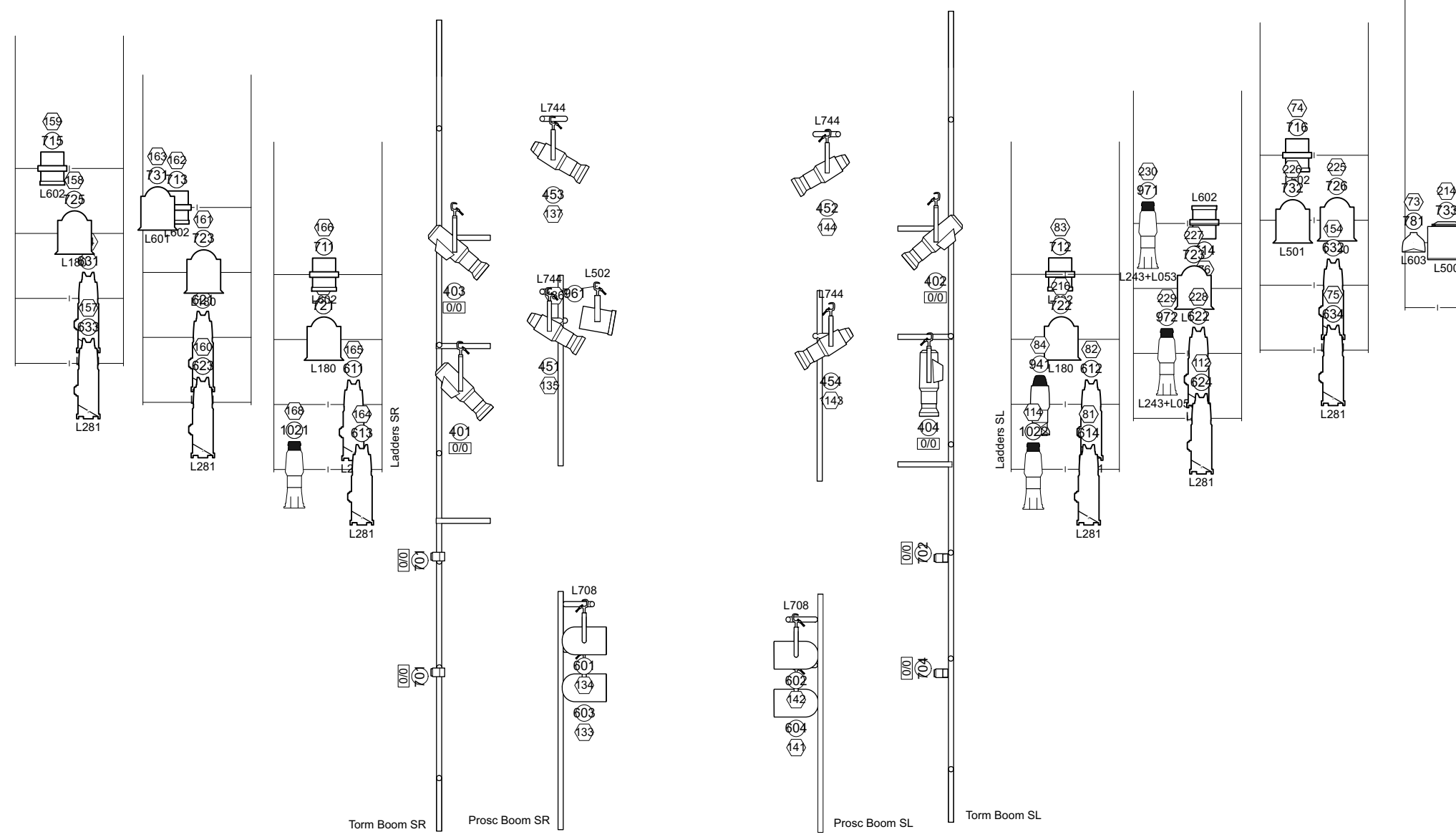


Generic

	ETC Source4 14deg 750W @ 750 w	4
	ETC Source4 19deg 750W @ 750w	17
	ETC Source4 26deg 750W @ 750w	4
	ETC Source4 36deg 750W @ 750w	3
	ETC Source4 50deg 750 @ 750w	6
	ETC Source4 70deg 750W @ 750w	2
	ETC Source4 PAR NSP @ 575w	4
	ETC Source4 PAR VNSP @ 575w	10
	ETC Source4 PAR MFL @ 575w	2
	ETC Source4 PAR WFL @ 575w	1
	ETC Source4 Zoom 15-30deg 750W @ 750w	14
	ETC Source4 Zoom 25-50deg 750W @ 750w	9
	ETC Source4 Fresnel @ 750w	49
	Selecon Arena High Performance Fresnel @ 2kw	10
	Selecon Rama 7" PC @ 750/1000w	4
	ADB Lighting CH50 @ 5kw	1
	USITT PAR64-MFL @ 1kw	12
	USITT PAR64-VNSP @ 1kw	3
	USITT PAR64-WFL @ 1kw	2
	USITT PAR MR-16 Birdie-MFL @ 50w	6
	Selecon LUI Flood 1 @ 1kw	10

Intelligent

	Martin MAC Encore Performance CLD @ 596w	4
	ETC Source4 LED2LS 26deg @ 171w	4
	ETC Source4 LED2LS 36deg @ 171w	16
	ETC ColorSource Cyclight @ 160w	5
	Martin RUSH PAR 2 RGBW Zoom @ 151w	8
	Showtec Sunstrip Active @ 800w	4



Production Title		A very expensive Poison	
Drawing Title		LX Booms / Key Version 6	
Designer	Izzy G. & Margaux L.	Director	Finn Den Hertog
Lighting Design	Leo Wittwer	Scale	1:50
Venue	New Athenaeum Theatre	Drawing No.	LX 6
Date	17.10.22	_____ of _____ 6	
CAD File Name	Lighting Design Working File V1.vwx		