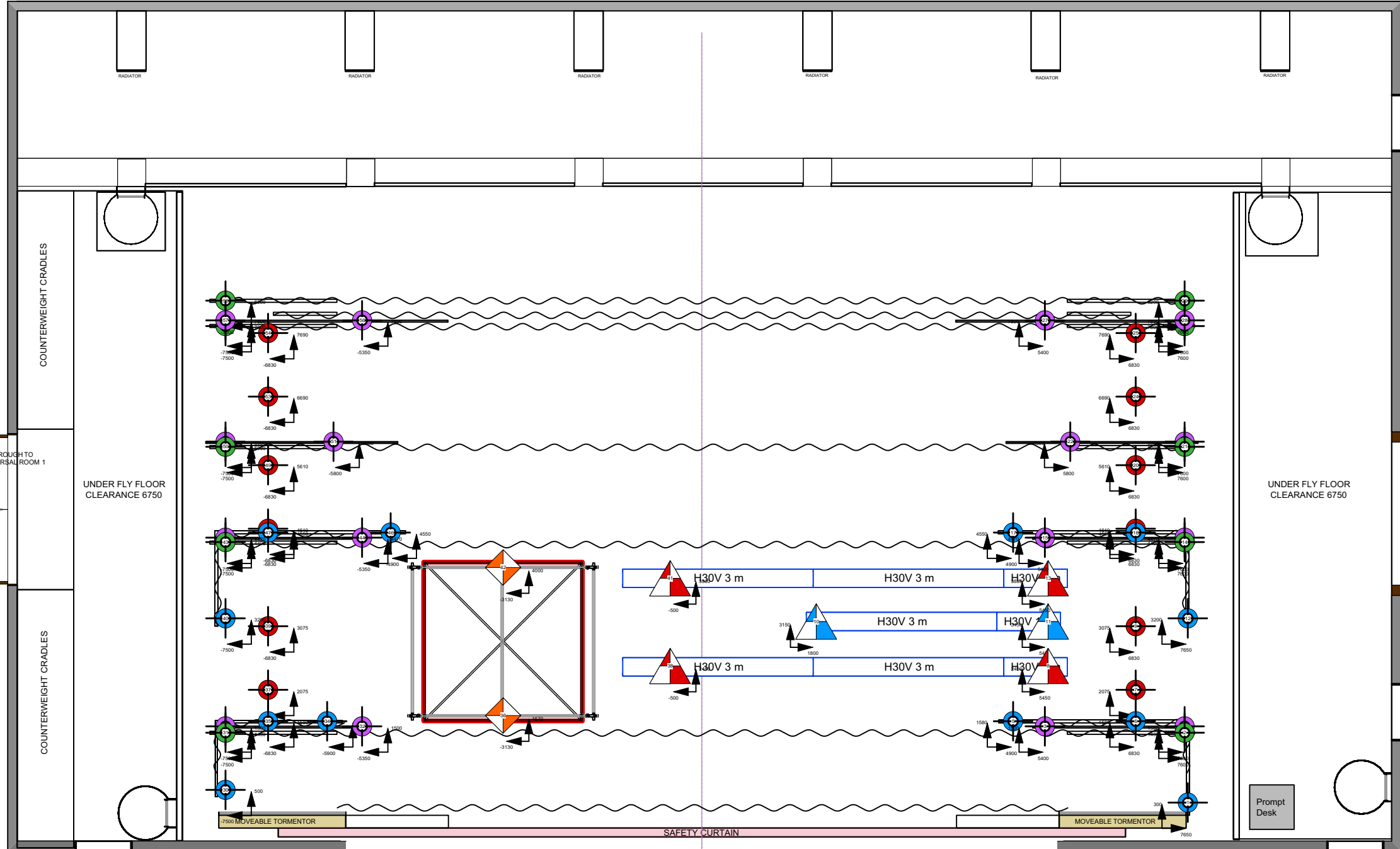


- LX 6
- 30
- 29
- 28
- 27
- 26
- 25
- CYC
- 24 Gauze
- 23 Border 4
- 22
- 21 Static Shard SL
- 20 LX 5
- 19 Static Shard SR
- 18
- 17 Tracking Shard 2
- DP16 Border 3
- DP15 LX 4
- DP14 Tracking Shard 1
- DP13 Border 2
- DP12 NO FLY- LX 3
- 11 NO FLY- Kabuki Drop
- 10 NO FLY
- 9 NO FLY
- 8 NO FLY- LX 2
- 7 NO FLY
- 6 NO FLY
- 5 Border 1
- 4 LX 1
- 3
- 2
- 1 Pros Border
- W

Points Key

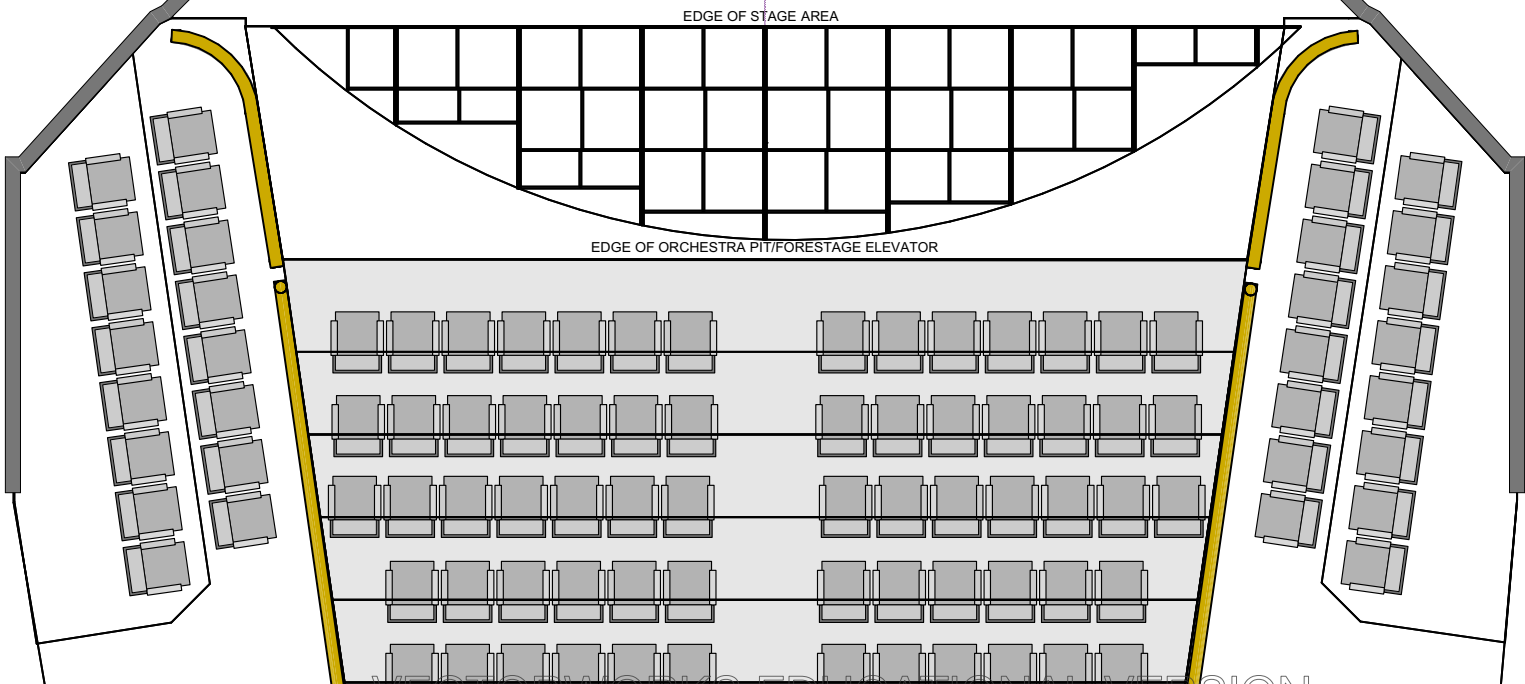
- Hard Masking (Hemp)
- Dog Leg (Hemp)
- Bar Pick-Up (Hemp)
- LX Ladder (Hemp)
- Canopy (Auto)
- LX Truss (Kinesys)
- Build Truss (Loadstar)



TECHNICAL DATA

Proscenium Opening	8 000mm - 11 200mm (w) x 7 180mm (h)
Setting Line to D/S of Rear Columns	10 000mm
Setting Line To Edge Of Stage	800mm
Setting Line To Edge of Forestage/Pit Elevator	3110mm
Depth of Forestage/Pit Elevator	2 310mm
Height of Stage from Stalls Level	910mm
Max Width of Stage	20 75 0mm
Width Between Fly Floors	16 550mm
Clearance To Underside of Fly Floors	6700mm
Height to Underside of Grid (Bar Travel)	15 500mm
Bar Width Counter Weights	11 500mm SWL 400kg UDL / 45kg PL
Bar Width DP Counter Weights	12 000mm SWL 370kg UDL / 50kg PL
Bar Width Hemp Sets	10 650mm SWL 50kg UDL

Get In Clearance Dimensions	Stage Left	2 250 (w) x 6 300 (h)
	Stage Right	2 350 (w) x 2 800 (h)



Updates

14/8/18 Dimmer Info Formatting Fixed

22/10/20 replaced CW and FOH bar symbol architecture with lighting pipes



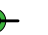


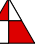

18/02/21 moved some DP and CW bars to correct y-position added missing catwalk 2 right rail back in

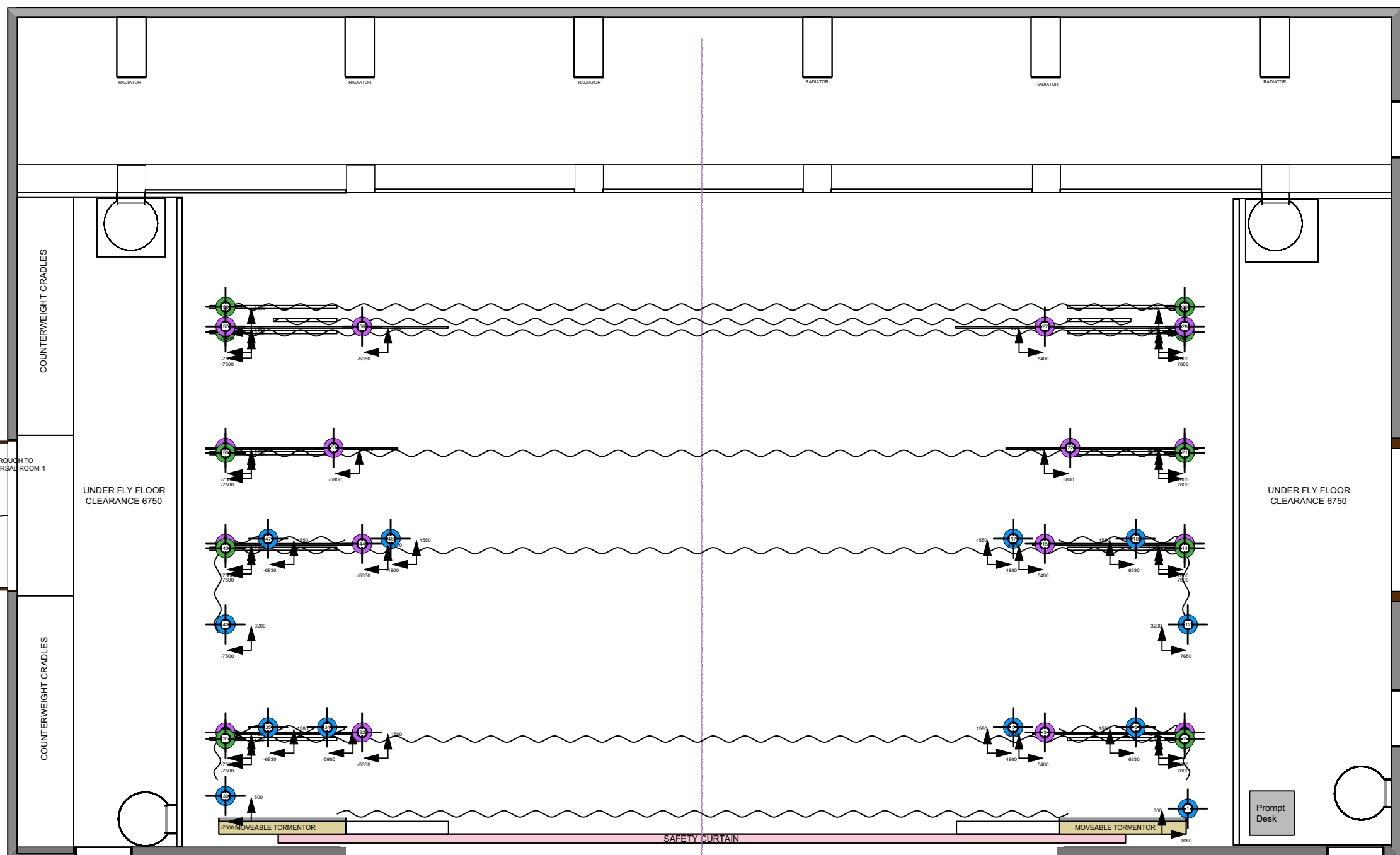
Steve Macluskie 0141 270 8257
Simon Cook 0141 270 8108

Show Name		
Into The Woods		
Reference	Drawn By	Date
Full Points Plan V3	Darren Wilson	13/04/2021
CAD File Name		
1:75@A3		

- LX 6
- 30
- 29
- 28
- 27
- 26
- 25
- CYC
- 24 Gauze
- 23 Border 4
- 22
- Static Shard SL
- LX 5
- 20 Static Shard SR
- 19
- 18
- Tracking Shard 2
- 17
- Border 3
- DP16
- LX 4
- DP15
- Tracking Shard 1
- DP14
- Border 2
- DP13
- NO FLY- LX 3
- DP12
- NO FLY- Kabuki Drop
- 11
- NO FLY
- 10
- NO FLY
- 9
- NO FLY- LX 2
- 8
- NO FLY
- 7
- NO FLY
- 6
- Border 1
- 5
- LX 1
- 3
- 2
- Pros Border
- 1
- W

Points Key

- Hard Masking (Hemp) 
- Dog Leg (Hemp) 
- Bar Pick-Up (Hemp) 
- LX Ladder (Hemp) 
- Canopy (Auto) 
- LX Truss (Kinesys) 
- Build Truss (Loadstar) 



To Rear Scene Dock

SCENE DOCK /GET IN
Door Clearance 2250w X 6300h

THROUGH TO
PROPS ROOM/KITCHEN

SETTING LINE 800mm from front of permanent stage

UNDER FLY FLOOR
CLEARANCE 6750

Prompt
Desk

Through to Dressing Room Corridor



TECHNICAL DATA

Proscenium Opening	8 000mm - 11 200mm (w) x 7 180mm (h)
Setting Line to D/S of Rear Columns	10 000mm
Setting Line to Edge Of Stage	800mm
Setting Line To Edge of Forestage/Pit Elevator	3110mm
Depth of Forestage/Pit Elevator	2 310mm
Height of Stage from Stalls Level	910mm
Max Width of Stage	20 750mm
Width Between Fly Floors	16 550mm
Clearance To Underside of Fly Floors	6700mm
Height to Underside of Grid (Bar Travel)	15 500mm
Bar Width Counter Weights	11 500mm SWL 400kg UDL / 45kg PL
Bar Width DP Counter Weights	12 000mm SWL 370kg UDL / 50kg PL
Bar Width Hemp Sets	10 650mm SWL 50kg UDL

Get In Clearance Dimensions	Stage Left	2 250 (w) x 6 300 (h)
	Stage Right	2 350 (w) x 2 800 (h)

Updates
 14/8/18 Dimmer Info Formatting Fixed
 22/10/20 replaced CW and FOH bar symbol architecture with lighting pipes
 18/02/21 moved some DP and CW bars to correct y-position added missing catwalk 2 right rail back in

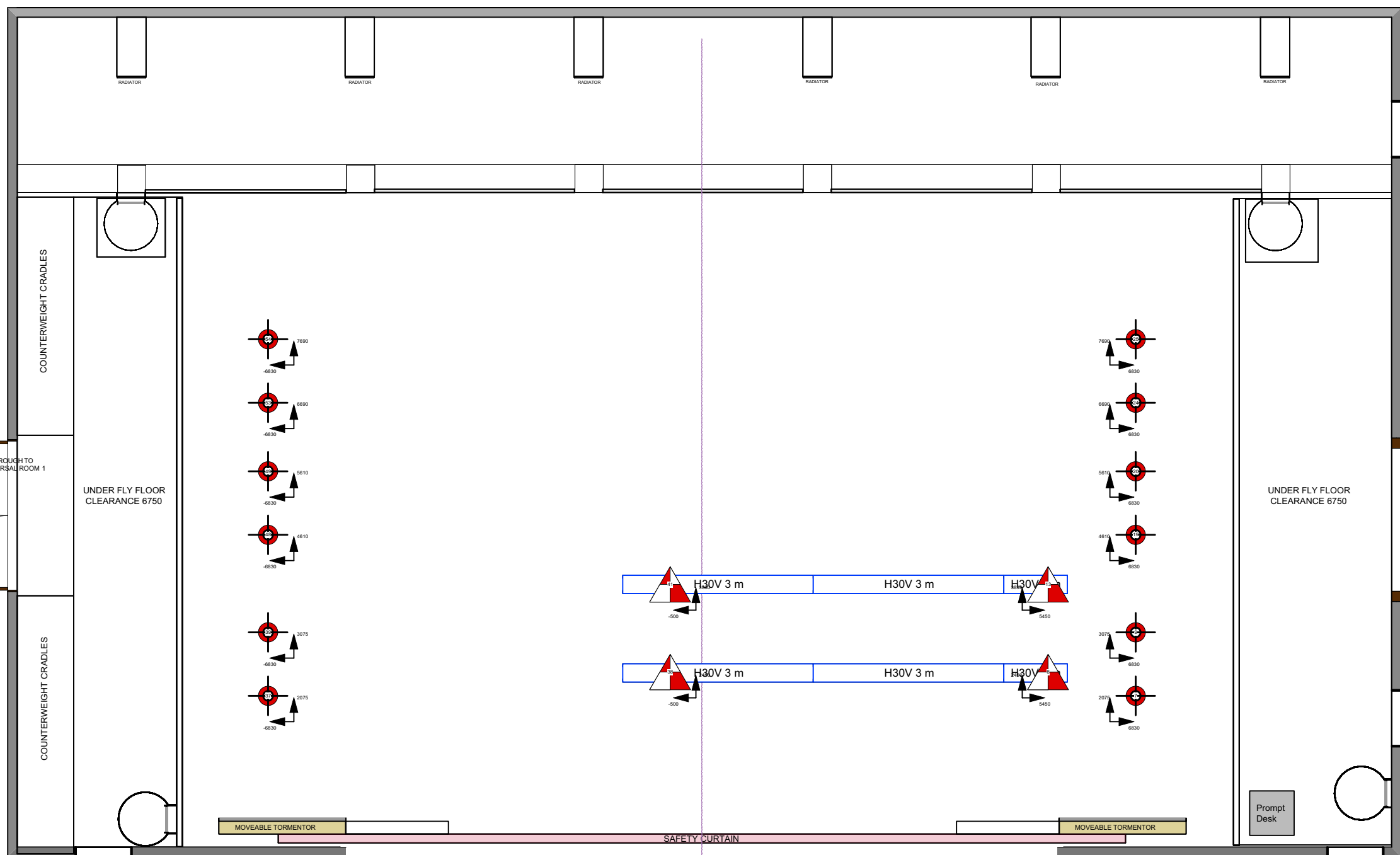
Steve Macluskie 0141 270 8257
 Simon Cook 0141 270 8108

Show Name Into the Woods		
Reference Masking Points V2	Drawn By Darren Wilson	Date 13/04/2021
CAD File Name 1:75@A3		

- LX 6
- 30
- 29
- 28
- 27
- 26
- 25
- CYC
- 24 Gauze
- 23 Border 4
- 21 Static Shard SL
- 20 LX 5
- 19 Static Shard SR
- 18
- 17 Tracking Shard 2
- DP16 Border 3
- DP15 LX 4
- Tracking Shard 1
- DP14
- Border 2
- DP13
- NO FLY- LX 3
- DP12
- 11 NO FLY- Kabuki Drop
- 10 NO FLY
- 9 NO FLY
- 8 NO FLY- LX 2
- 7 NO FLY
- 6 NO FLY
- 5 Border 1
- 4 LX 1
- 3
- 2
- 1 Pros Border
- W

Points Key

- Hard Masking (Hemp)
- Dog Leg (Hemp)
- Bar Pick-Up (Hemp)
- LX Ladder (Hemp)
- Canopy (Auto)
- LX Truss (Kinesys)
- Build Truss (Loadstar)



To Rear Scene Dock

SCENE DOCK /GET IN
Door Clearance 2250w X 6300h

THROUGH TO
PROPS ROOM/KITCHEN

Prompt Desk

Through to Dressing Room Corridor

UNDER FLY FLOOR
CLEARANCE 6750

UNDER FLY FLOOR
CLEARANCE 6750

COUNTERWEIGHT CRADLES

COUNTERWEIGHT CRADLES

THROUGH TO
REHEARSAL ROOM 1

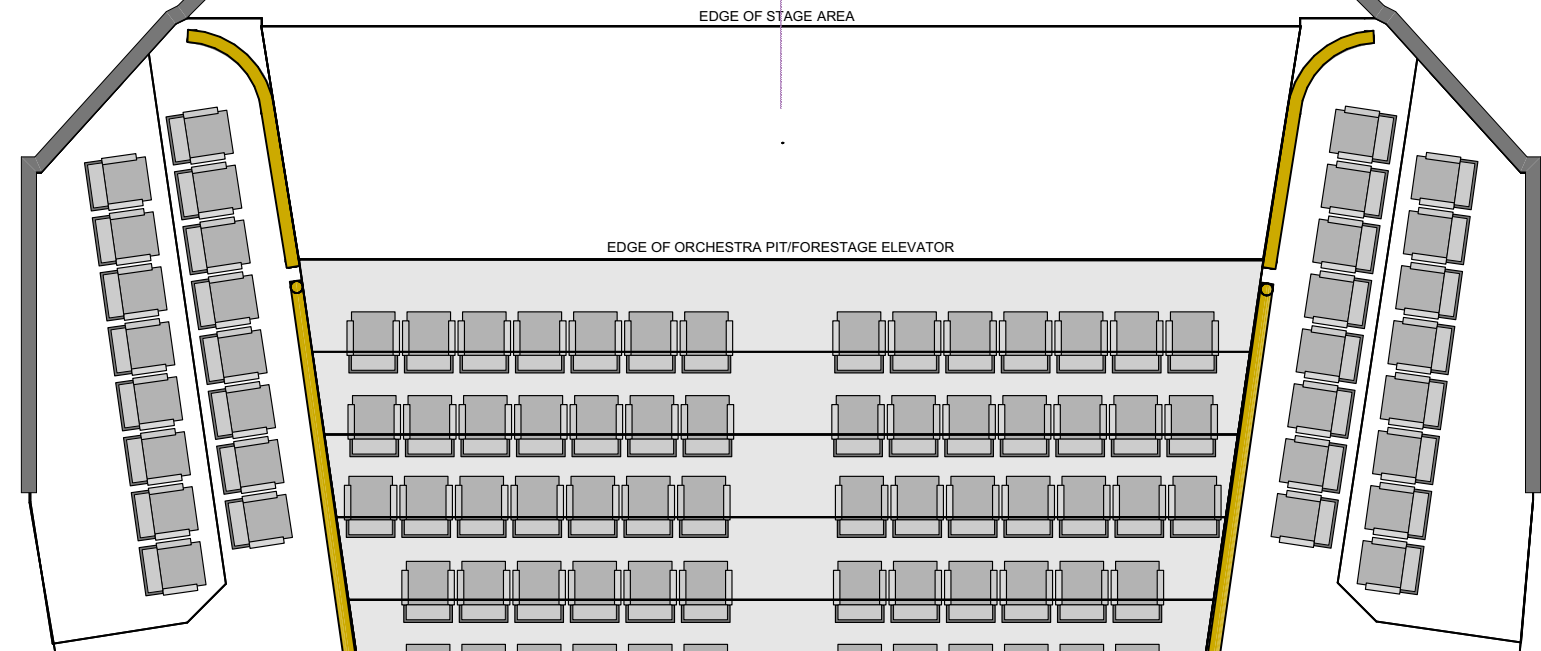
To Lower Foyer



TECHNICAL DATA

Proscenium Opening	8 000mm - 11 200mm (w) x 7 180mm (h)
Setting Line to D/S of Rear Columns	10 000mm
Setting Line To Edge Of Stage	800mm
Setting Line To Edge of Forestage/Pit Elevator	3110mm
Depth of Forestage/Pit Elevator	2 310mm
Height of Stage from Stalls Level	910mm
Max Width of Stage	20 75 0mm
Width Between Fly Floors	16 550mm
Clearance To Underside of Fly Floors	6700mm
Height to Underside of Grid (Bar Travel)	15 500mm
Bar Width Counter Weights	11 500mm SWL 400kg UDL / 45kg PL
Bar Width DP Counter Weights	12 000mm SWL 370kg UDL / 50kg PL
Bar Width Hemp Sets	10 650mm SWL 50kg UDL

Get In Clearance Dimensions	Stage Left	2 250 (w) x 6 300 (h)
	Stage Right	2 350 (w) x 2 800 (h)



Updates
 14/8/18 Dimmer Info Formatting Fixed
 22/10/20 replaced CW and FOH bar symbol architecture with lighting pipes
 18/02/21 moved some DP and CW bars to correct y-position added missing catwalk 2 right rail back in

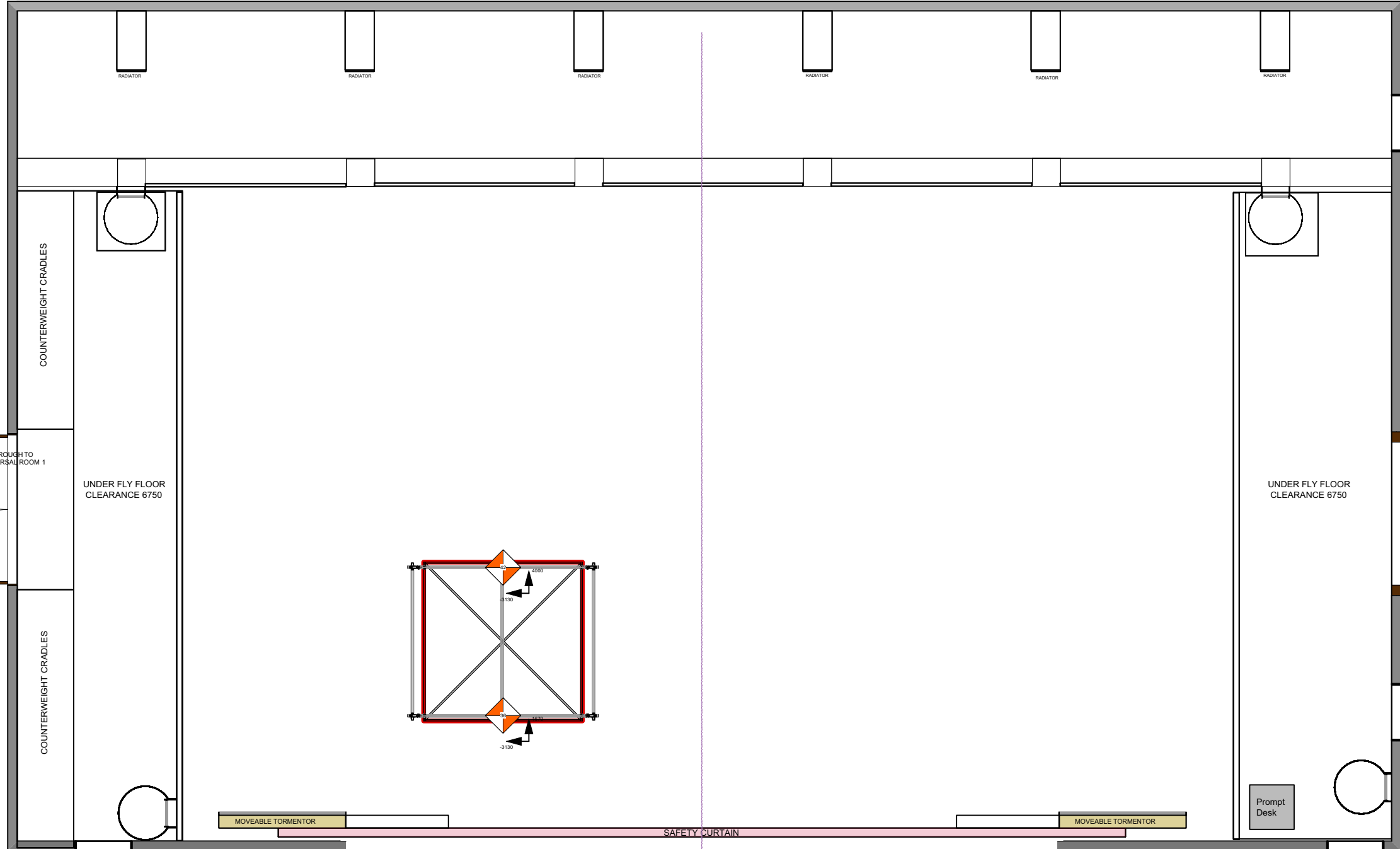
Steve Macluskie 0141 270 8257
 Simon Cook 0141 270 8108

Show Name Into the Woods		
Reference LX Points V3	Drawn By Darren Wilson	Date 13/04/2021
CAD File Name 1:75@A3		

- LX 6
- 30
- 29
- 28
- 27
- 26
- 25
- CYC
- 24 Gauze
- 23 Border 4
- 22
- Static Shard SL
- 21 LX 5
- 20 Static Shard SR
- 19
- 18
- Tracking Shard 2
- 17
- DP16 Border 3
- DP15 LX 4
- Tracking Shard 1
- DP14
- Border 2
- DP13
- NO FLY- LX 3
- DP12
- NO FLY- Kabuki Drop
- 11
- NO FLY
- 10
- NO FLY
- 9
- NO FLY- LX 2
- 8
- NO FLY
- 7
- NO FLY
- 6
- Border 1
- 5
- LX 1
- 3
- 2
- Pros Border
- 1
- W

Points Key

- Hard Masking (Hemp)
- Dog Leg (Hemp)
- Bar Pick-Up (Hemp)
- LX Ladder (Hemp)
- Canopy (Auto)
- LX Truss (Kinesys)
- Build Truss (Loadstar)



To Rear Scene Dock

SCENE DOCK /GET IN
Door Clearance 2250w X 6300h

THROUGH TO
PROPS ROOM/KITCHEN

SETTING LINE 800mm from front of permanent stage

UNDER FLY FLOOR
CLEARANCE 6750

Prompt
Desk

Through to Dressing Room Corridor

UNDER FLY FLOOR
CLEARANCE 6750

THROUGH TO
REHEARSAL ROOM 1

COUNTERWEIGHT CRADLES

COUNTERWEIGHT CRADLES

MOVEABLE TORMENTOR

MOVEABLE TORMENTOR

EDGE OF STAGE AREA

EDGE OF ORCHESTRA PIT/FORESTAGE ELEVATOR



TECHNICAL DATA

Proscenium Opening	8 000mm - 11 200mm (w) x 7 180mm (h)
Setting Line to D/S of Rear Columns	10 000mm
Setting Line To Edge Of Stage	800mm
Setting Line To Edge of Forestage/Pit Elevator	3110mm
Depth of Forestage/Pit Elevator	2 310mm
Height of Stage from Stalls Level	910mm
Max Width of Stage	20 75 0mm
Width Between Fly Floors	16 550mm
Clearance To Underside of Fly Floors	6700mm
Height to Underside of Grid (Bar Travel)	15 500mm
Bar Width Counter Weights	11 500mm SWL 400kg UDL / 45kg PL
Bar Width DP Counter Weights	12 000mm SWL 370kg UDL / 50kg PL
Bar Width Hemp Sets	10 650mm SWL 50kg UDL

Get In Clearance Dimensions	Stage Left	2 250 (w) x 6 300 (h)
	Stage Right	2 350 (w) x 2 800 (h)








Updates
 14/8/18 Dimmer Info Formatting Fixed
 22/10/20 replaced CW and FOH bar symbol architecture with lighting pipes
 18/02/21 moved some DP and CW bars to correct y-position added missing catwalk 2 right rail back in

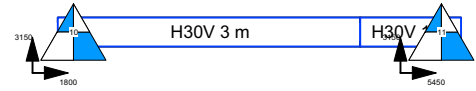
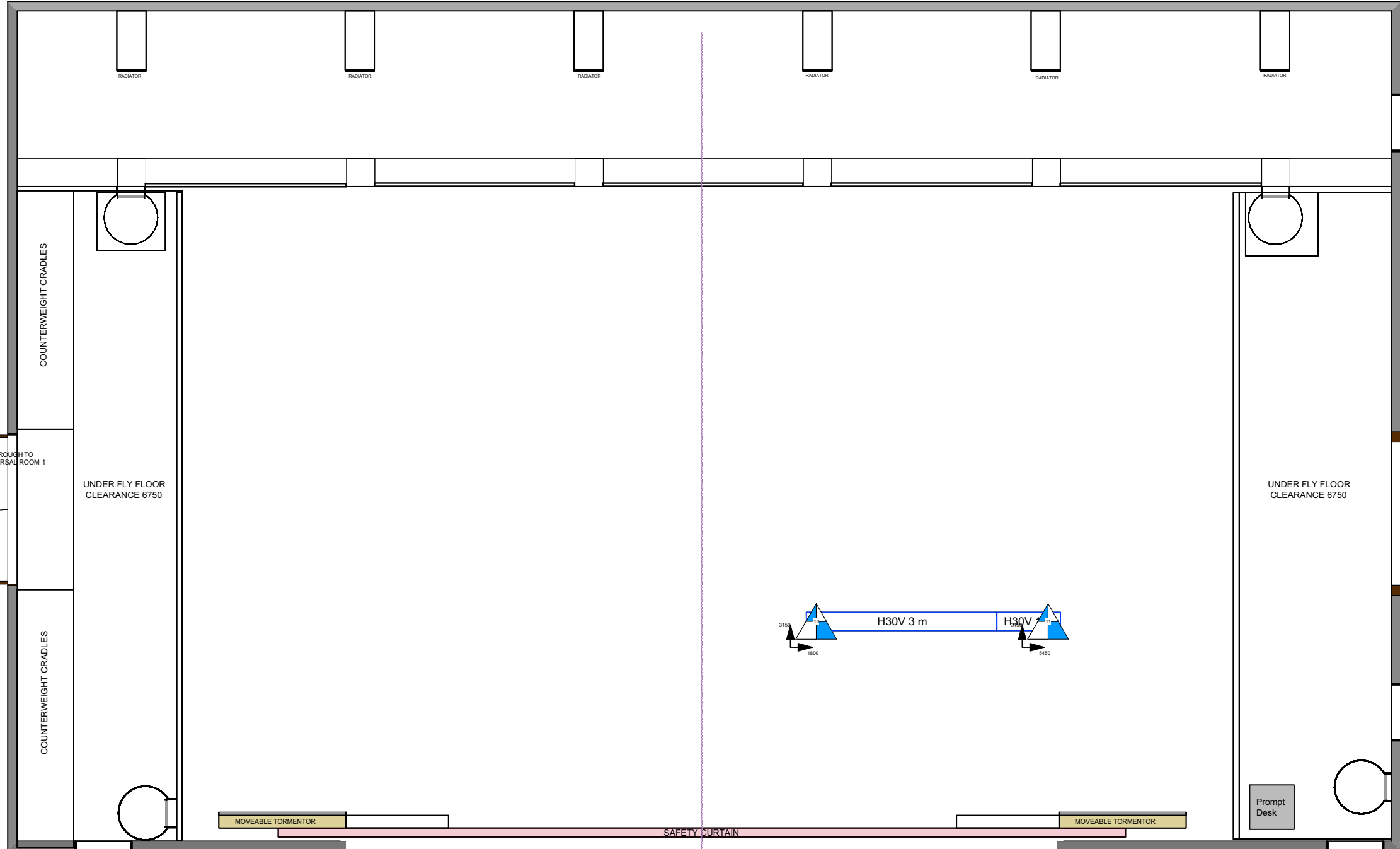
Steve Macluskie 0141 270 8257
 Simon Cook 0141 270 8108

Show Name Into the Woods		
Reference Automation Points V3	Drawn By Darren Wilson	Date 13/04/2021
CAD File Name 1:75@A3		

- LX 6
- 30
- 29
- 28
- 27
- 26
- 25
- CYC
- 24 Gauze
- 23 Border 4
- 21 Static Shard SL
- 20 LX 5
- 19 Static Shard SR
- 18
- Tracking Shard 2
- 17
- DP16 Border 3
- DP15 LX 4
- Tracking Shard 1
- DP14
- Border 2
- DP13
- NO FLY- LX 3
- DP12
- NO FLY- Kabuki Drop
- 11
- NO FLY
- 10
- NO FLY
- 9
- NO FLY- LX 2
- 8
- NO FLY
- 7
- NO FLY
- 6
- Border 1
- 5
- LX 1
- 3
- 2
- Pros Border
- 1
- W

Points Key

- Hard Masking (Hemp) 
- Dog Leg (Hemp) 
- Bar Pick-Up (Hemp) 
- LX Ladder (Hemp) 
- Canopy (Auto) 
- LX Truss (Kinesys) 
- Build Truss (Loadstar) 



TECHNICAL DATA

Proscenium Opening	8 000mm - 11 200mm (w) x 7 180mm (h)
Setting Line to D/S of Rear Columns	10 000mm
Setting Line To Edge Of Stage	800mm
Setting Line To Edge of Forestage/Pit Elevator	3110mm
Depth of Forestage/Pit Elevator	2 310mm
Height of Stage from Stalls Level	910mm
Max Width of Stage	20 75 0mm
Width Between Fly Floors	16 550mm
Clearance To Underside of Fly Floors	6700mm
Height to Underside of Grid (Bar Travel)	15 500mm
Bar Width Counter Weights	11 500mm SWL 400kg UDL / 45kg PL
Bar Width DP Counter Weights	12 000mm SWL 370kg UDL / 50kg PL
Bar Width Hemp Sets	10 650mm SWL 50kg UDL

Get In Clearance Dimensions	Stage Left	2 250 (w) x 6 300 (h)
	Stage Right	2 350 (w) x 2 800 (h)

Updates

14/8/18 Dimmer Info Formatting Fixed

22/10/20 replaced CW and FOH bar symbol architecture with lighting pipes

18/02/21 moved some DP and CW bars to correct y-position added missing catwalk 2 right rail back in

Steve Macluskie 0141 270 8257
Simon Cook 0141 270 8108

Show Name Into the Woods		
Reference Build Points	Drawn By Darren Wilson	Date 13/04/2021
CAD File Name 1:75@A3		