

LX Overhead

	Martin MAC Encore Performance CLD	4
	Martin RUSH PAR 2 RGBW Zoom	9
	Altman 2K Fresnel	11
	Altman 5K Fresnel	0
	ETC Source 4 14deg	4
	ETC Source 4 19deg	15
	ETC Source 4 26deg	4
	ETC Source 4 36deg	8
	ETC Source4 Fresnel	16
	ETC Source4 LED2LS 15deg-30deg Zoom	1
	ETC Source4 LED2LS 26deg	4
	ETC Source4 PAR MFL	4
	ETC Source 4 Zoom 25-50deg	8
	High End Systems SolaFrame 750	4
	USITT PAR64-MFL	14
	ETC D40 Vivid SELR45	6
	ETC Source 4 LED 19deg	4
	ETC Source 4 LED 26deg	5
	ETC Source 4 LED 36deg	9
	ETC Source4 LED2DS 36deg	2
	ETC Source 4 Zoom 15-30deg	4

afterlife

Show	After Life	Venue	The New Atheneum
Director	Emily Reutlinger	Company	
Lighting Designer	Eoin Beaton	Head of Stage	Mia Doyle and Mairi Camshroom
Sound Designer	Daniel Barclay	Head of Stage	Jamie Patridge
Drawn By		Scale	1:100
		Date	27/09/2024

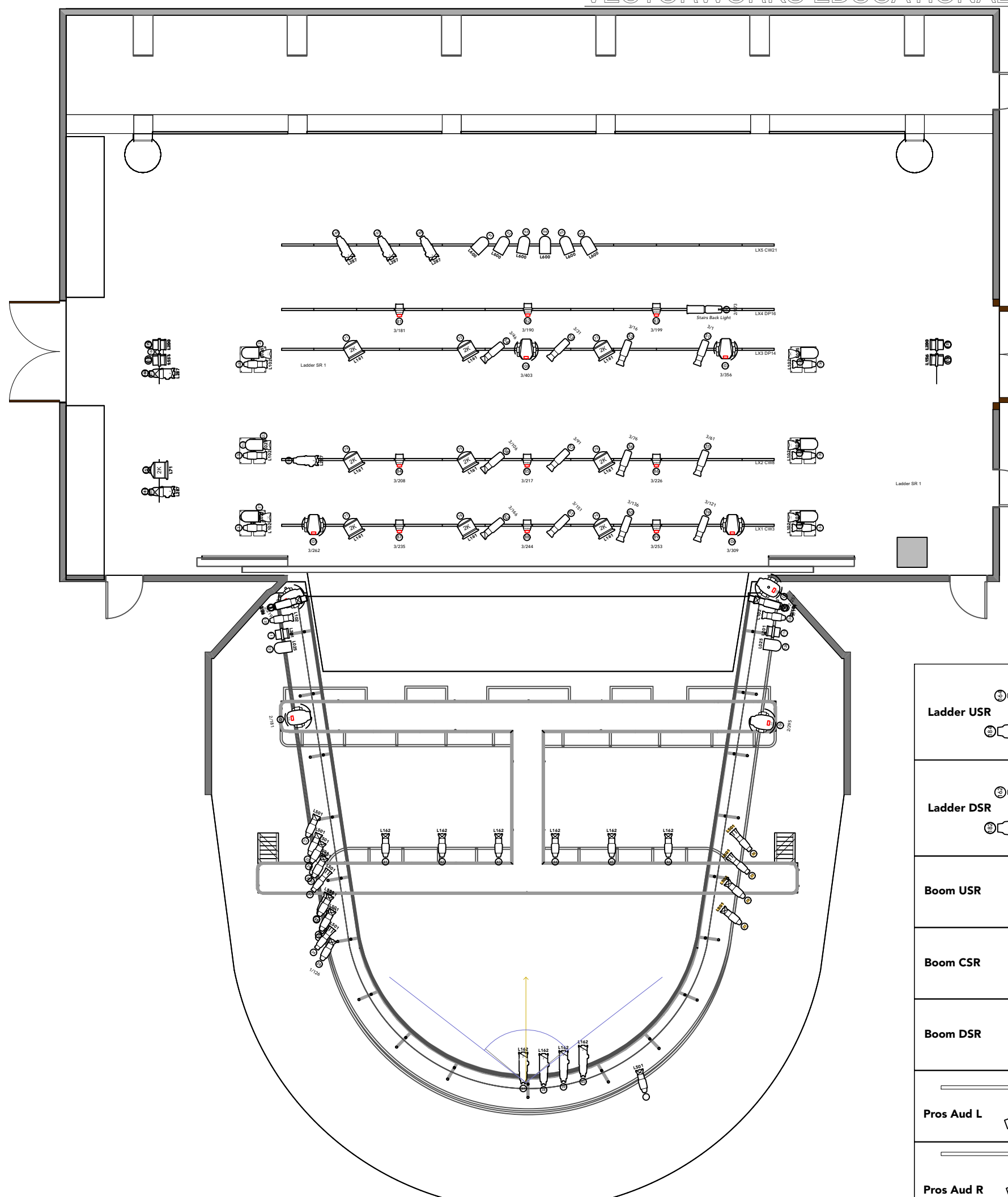
Designer Notes

All Fresnels fitted with Barndoors
 All profiles will have either L132 or L119 frost
 Modes are not yet confirmed. Do not use this document for reference yet.

Revisions	
C	05/10/2024 Re-positioned overhead Lustrs Swapped the Encores and Solaframes Added new units in the first circle to continue the 'booms' Gelled the pars behind the flat and the 5k with L600
D	08/10/2024 Moved Encore USR to USL Shuffled the pars along

EOIN BEATON LIGHTING DESIGN

V4



Ladder USR		Ladder USL	
Ladder DSR			
Boom USR		Boom USL	
Boom CSR		Boom CSL	
Boom DSR		Boom DSL	
Pros Aud L			
Pros Aud R			