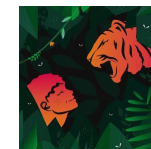


SET BUILD METHOD STATEMENT



Production	The Jungle Book		
Description of Activity	Get In, rigging and assembly of prefabricated theatre scenery		
Location of Activity	1	RCS Workshop	
	2	New Athenaeum Theatre	
Dates of Activity	1	14-Nov	
	2	17-Nov	
Associated Documents	Risk Assessments, Safe Systems of Work/Method Statements, Equipment Lists, Production Schedule		
		Name	Job Title
Staff Involved	1	Stephen Roe	Production Manager
	2	Simon Cook	Workshop Tutor
	3	Matt Doolan	Workshop Tutor
	4	Malcolm Stephen	Stage Tutor
	5	Dave Evans	LX Tutor
	6	Colin Stephen	Workshop Staff
		Ruth Green	Scenic Constriction 3rd Year

S t u d e n t s I n v o l v e d		Omar Bahtia	Scenic Constriction 3rd Year
		Danny Main	Scenic Constriction 3rd Year
		Josh Calder	Scenic Constriction 2nd Year
		Yesha Subotincic West	Technical Stage Manager 3rd Year
		James Hamilton	PTM 2nd Year
		Regan Kelly	PTM 2nd Year
		Joshua Brown	PTM 1nd Year
		Greig Buckley	PTM 1nd Year
		Neal Clark	PTM 1nd Year
		Lewis Douglas	PTM 1nd Year
		Rhys Gaughan	PTM 1nd Year
		Peter Goddard	PTM 1nd Year
		Meirian Hall-Jones	PTM 1nd Year
		Ronan O'Neill	PTM 1nd Year
		Nicole Green	Props 3rd Year
		Leah Kurzepa	Props 3rd Year
		Melissa Smith	Props 3rd Year
	Claudia Jevons	Props 3rd Year	
	Amy Dawson	Production Electrician 3rd Year	
Tools / equipment			
<i>All lifting equipment should be detailed separately with safe working loads</i>	Chain hoists/hemp lines		
	Screw guns		
	Festool circular saw		
Specific hazards identified			
	Overhead work		
	Manual Handling		
	Working at height		
	Slips trips and falls		

Specific training requirements			
	Manual Handling		
	Tallesope		
	Ladder		
Principal elements of set			
<i>Please specify principal elements of scenery that will form the set to be assembled on stage</i>	Item and Description		Approx weight in KG
	1	Pillar 1	TBD
	2	Pillar 2	TBD
	3	Pillar 3	TBD
	4	Pillar 4	TBD
	5	Squinty Pillar	TBD
	6	Council Rock	TBD
	7	USL Platform	TBD
	8	Moon Box	24
	9	Fences x 3	24
	10	Star Cloth (Scottish Opera)	150
	11	White Gauze	20
	12	Props and trees	TBD
Sequence of operations			Equipment Required
1	Tool Box Talk/ Markout	Tape	
2	LX Rig/Genie Trap	Chain hoists/truss	

<i>Please specify method of work in chronological order detailing tools, materials and equipment used</i>	3	Automation	clear stage	
	4	LX Rig/Masking	n/a	
	5	LX Rig/hemp	n/a	
	6	Van load @ w-shop	n/a	
	7	Install forstage curve	Rattle guns/podgers	
	8	Lay floor + cut at dip traps	Festool circular saw/screwguns	
	9	Router forstage corner	Router	
	10	SR Pilars	Spot lines/coach screws	
	11	SL Pilars	Spot lines/coach screws	
	12	USL Platform	rattle guns/podgers	
	13	Council rock	Screwguns	
	14	Props and trees	Ladders, air tools, compressor	
	Temporary support measures used (if required)			
Method of access and egress to the work area	Tallescope			
	Little Giants/Zarges			
Fall protection measures (if required)	Harness in tallescope.			
Hazardous substances				
Involved - Yes / No ?	No			

If Yes please include relevant COSHH data sheets where applicable			
PPE required			
Types	1	Steel Toe Cap Boots	
	2	Hardhats	
	3	Ear + eye protection	
	4	Hi-Vis vests/jackets	
Nearest first aider		Venue Specific First Aider	
Nearest first aid		Venue Specific First Aid Box	
Author			
Author		Yesha Subotincic West	
Job Title			
Job Title		Technical Stage Manager	
Date			
Date		09/11/2017	
Staff supervisor			
Staff supervisor		Malcolm Stephen	
Reviewed by			
Reviewed by			
Job Title			
Job Title			
Date			
Date			
COMMUNICATION		<i>The contents of this method statement have been communicated to the people involved or effected by the works whose details can be found in the RA Sign Off Sheet.</i>	