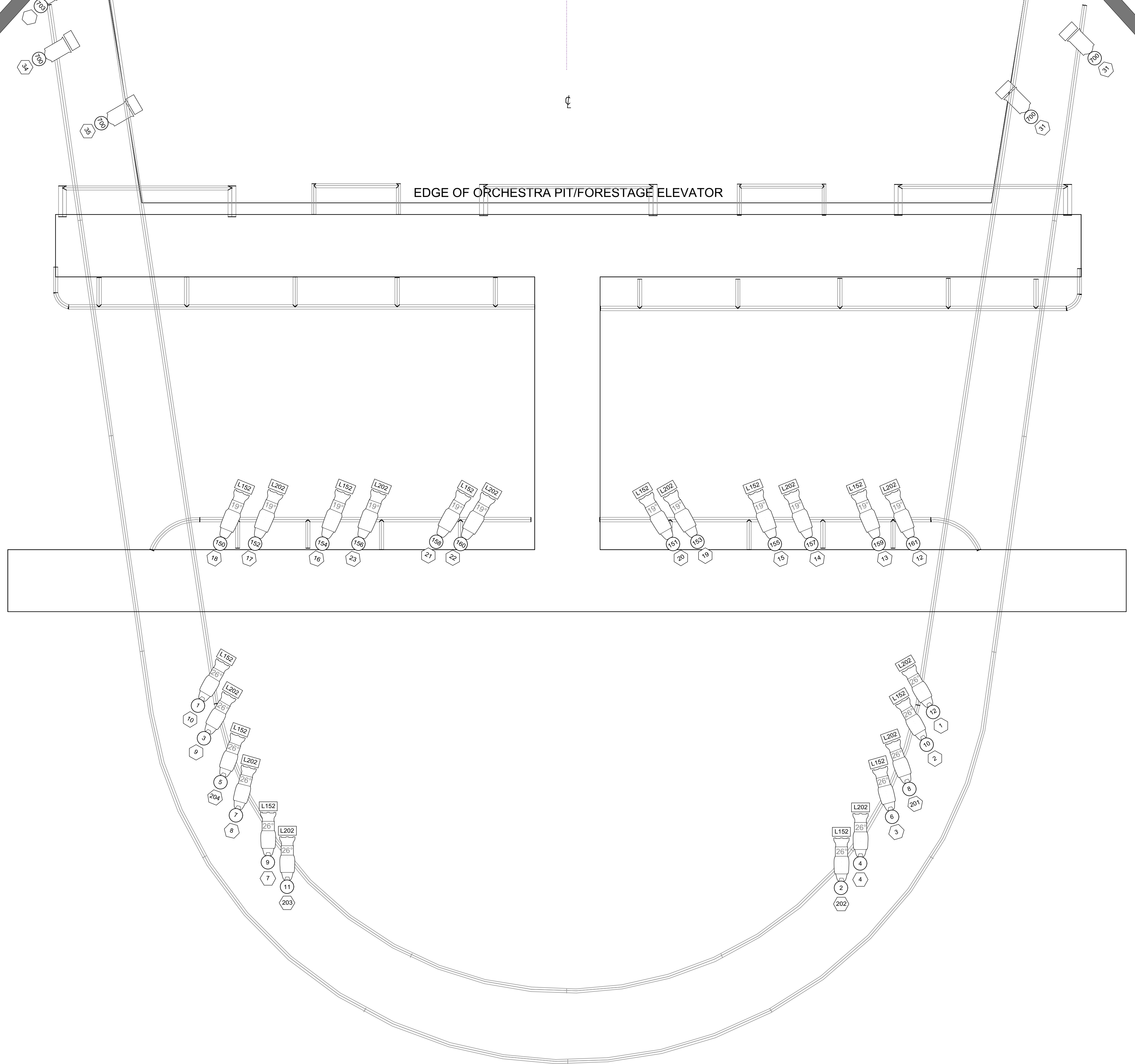


TECHNICAL DATA

Proscenium Opening	8 000mm - 11 200mm (w) x 7 180mm (h)
Setting Line to D/S of Rear Columns	10 000mm
Setting Line to Edge Of Stage	800mm
Setting Line To Edge of Forestage/Pit Elevator	3110mm
Depth of Forestage/Pit Elevator	2 310mm
Height of Stage from Stalls Level	910mm
Max Width of Stage	20 75 0mm
Width Between Fly Floors	16 550mm
Clearance To Underside of Fly Floors	6700mm
Height to Underside of Grid (Bar Travel)	15 500mm
Bar Width Counter Weights	11 500mm SWL 400kg UDL / 45kg PL
Bar Width DP Counter Weights	12 000mm SWL 370kg UDL / 50kg PL
Bar Width Hemp Sets	10 650mm SWL 50kg UDL
Get In Clearance Dimensions	
Stage Left	2 250 (w) x 6 300 (h)
Stage Right	2 350 (w) x 2 800 (h)

- General Notes**
1. Checked and updated January 2012 (S.Macluskie)
 2. Class & Layer re-structure March 2012 (S.Cook)
 3. Substage Walk up trap added march 2012 (S.Cook)
 4. Setting Line Changed to 800mm from Front of Stage
 5. Tidied Up Auditorium Lines Dec 2012
 6. Changed Setting & Centre Lines to "Guides"
- 2013 Updates**
1. Added DSL & DSR Door Access
 2. Changed Prosc Wall L&R
 3. Removed all extra symbol folders to reduce file size
 4. Updated SWL of DP to 370kg
 5. Added Setting Line to main Sheet Layers
- Steve Macluskie 0141 270 8257
Simon Cook 0141 270 8108



Light

	Source 4 19°
	Source 4 26°
	PAR 2 RGBW Zoom - Hung
	PAR 62
	2k Fresnel
	Selecon 2k Fresnel
	750w Fresnel
Moving Light	
	VL-1000 Tungsten dimmer