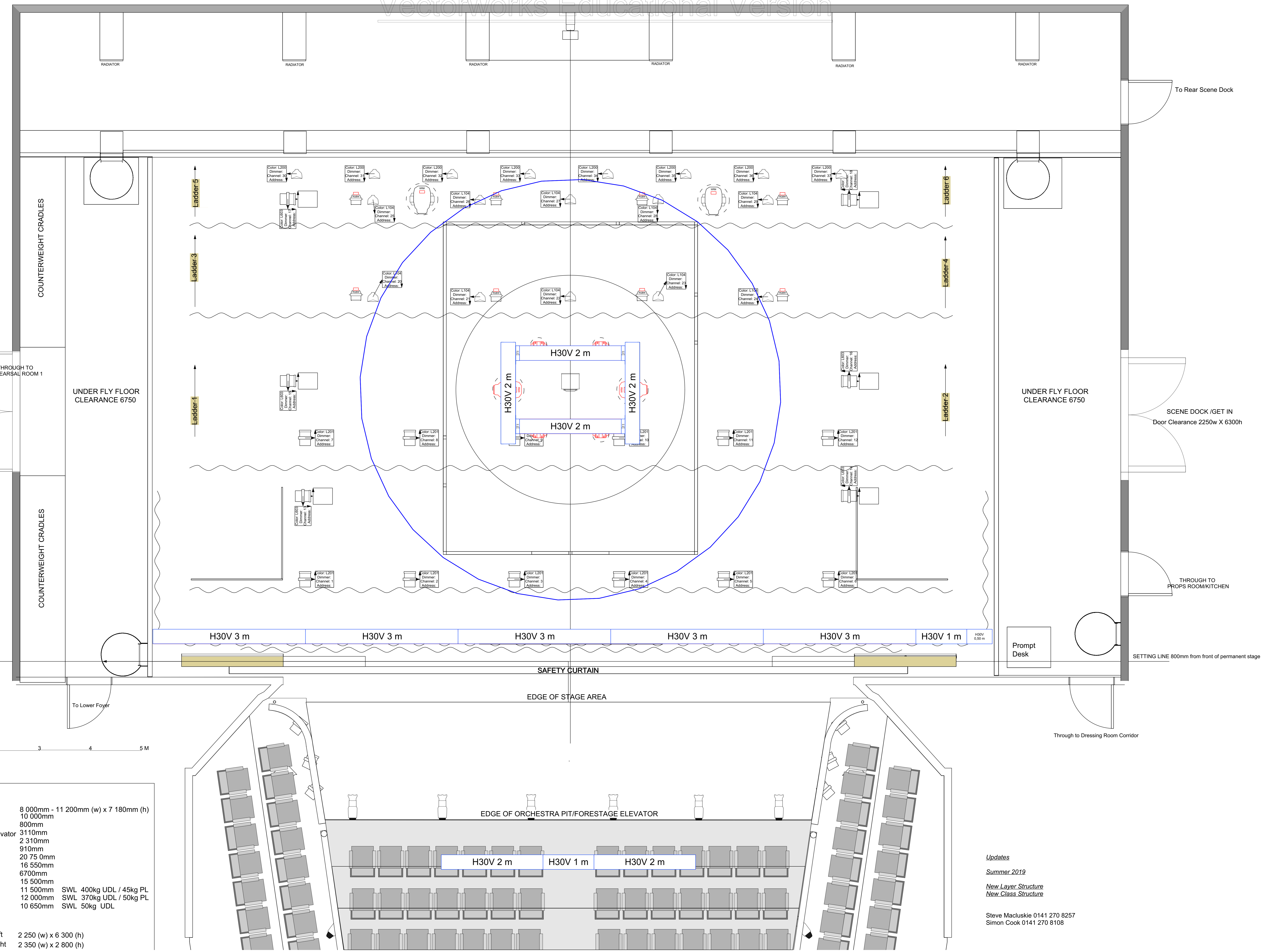


- 30 DNF
- 29 LX7
- 28
- 27 LX6
- 26 Border
- 25
- 24
- 23 Sound 2
- 22
- 21 LX5
- 20 Border
- 19
- 18
- 17
- DP16
- DP15 LX4
- Cable Run
- DP14
- LX3
- DP13
- Border
- DP12
- LX2
- 11
- 10
- 9
- 8
- 7 Sound 1
- 6 LX1
- 5 Border
- 4
- 3
- 2 DNF
- 1 Full Black
- W



TECHNICAL DATA

Proscenium Opening	8 000mm - 11 200mm (w) x 7 180mm (h)
Setting Line to D/S of Rear Columns	10 000mm
Setting Line To Edge Of Stage	800mm
Setting Line To Edge of Forestage/Pit Elevator	3110mm
Depth of Forestage/Pit Elevator	2 310mm
Height of Forestage/Pit Elevator	910mm
Height of Stage from Stalls Level	20 750mm
Max Width of Stage	16 550mm
Width Between Fly Floors	6700mm
Clearance To Underside of Fly Floors	15 500mm
Height to Underside of Grid (Bar Travel)	11 500mm
Bar Width Counter Weights	12 000mm SWL 400kg UDL / 45kg PL
Bar Width DP Counter Weights	12 000mm SWL 370kg UDL / 50kg PL
Bar Width Hemp Sets	10 650mm SWL 50kg UDL

Get In Clearance Dimensions	Stage Left	2 250 (w) x 6 300 (h)
	Stage Right	2 350 (w) x 2 800 (h)

Updates
 Summer 2019
 New Layer Structure
 New Class Structure

Steve Macluskie 0141 270 8257
 Simon Cook 0141 270 8108



Dialogue DesCarmelites

Floor Plan

Director **Matthew Eberhardt**
 Stage Manager **Jessica McKay**
 TSM **Sean Ramsay**
 Drawn By **S.Ramsay**

Designer **Justin Nardella**
 LX Design **Peter Goddard**
 Date **23/04/2020** Scale **1:25@A0**

Drawing Number **1**

23/04/2020

Floor Plan

Dialogue DesCarmelites