

Miseryguts

FOCUS NOTES

Lighting Designer: Oliver Gorman
Programmer/Operator: Stuart Lord

Chief Electrician: Elle Taylor



FOCUS NOTES

Lighting Designer: Oliver Gorman
 Programmer/Operator: Stuart Lord

Chief Electrician: Elle Taylor

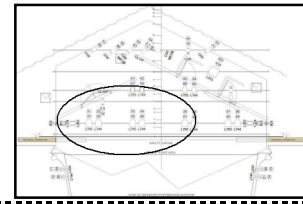
LX 1

Chan	Instrument Type	Wattage	Purpose	Access
------	-----------------	---------	---------	--------

(804) Selecon 1.2kW Fresnel 1.2kw Top Crosswash
DS @ 0 Nt: **Wide Top Crosswash**

Scy:

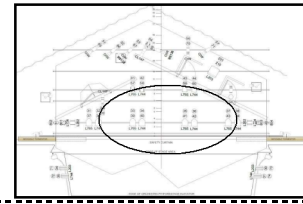
Bea In/Sp - - + - ⊖ Out/Fl Axis: ⊕ — / \ L/R US/DS
 US: **Off SR Flat** DS: **Edge of Pit**
 SR: SL:
 Top: **Squared Off** Bot: **Squared Off**



(802) Selecon 1.2kW Fresnel 1.2kw Top Crosswash
DS @ 0 Nt: **Wide Top Crosswash**

Scy:

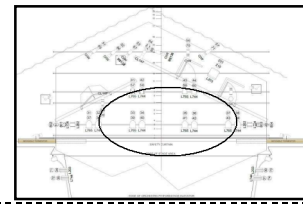
Bea In/Sp - - + - ⊖ Out/Fl Axis: ⊕ — / \ L/R US/DS
 US: **Off SR Flat** DS: **Edge of Pit**
 SR: SL:
 Top: **Squared Off** Bot: **Squared Off**



(801) Selecon 1.2kW Fresnel 1.2kw Top Crosswash
DS @ 0 Nt: **Wide Top Crosswash**

Scy:

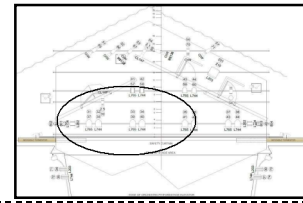
Bea In/Sp - - + - ⊖ Out/Fl Axis: ⊕ — / \ L/R US/DS
 US: **Off SR Flat** DS: **Edge of Pit**
 SR: SL:
 Top: **Squared Off** Bot: **Squared Off**



(803) Selecon 1.2kW Fresnel 1.2kw Top Crosswash
DS @ 0 Nt: **Wide Top Crosswash**

Scy:

Bea In/Sp - - + - ⊖ Out/Fl Axis: ⊕ — / \ L/R US/DS
 US: **Off SR Flat** DS: **Edge of Pit**
 SR: SL:
 Top: **Squared Off** Bot: **Squared Off**



FOCUS NOTES

LX 1

Chan	Instrument Type	Wattage	Purpose	Access
------	-----------------	---------	---------	--------

(31) CCT Starlette 2kW Fresnel 2kw Top Wash

DSR @ 4m

Nt: **Wide Topwash - Off Audience**

Scy:

Bea In/Sp - - + - ⊖ Out/Fl

Axis: | ⊖ / \ L/R US/DS

US: **Squared Off**

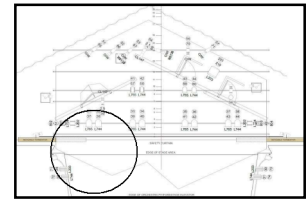
DS: **Edge of Stage**

SR: **Squared Off To Edge of Flats**

SL: **Squared Off**

Top:

Bot:



(37) CCT Starlette 2kW Fresnel 2kw Top Wash

DSL @ 4m

Nt: **Wide Topwash - Off Audience**

Scy:

Bea In/Sp - - + - ⊖ Out/Fl

Axis: | ⊖ / \ L/R US/DS

US: **Squared Off**

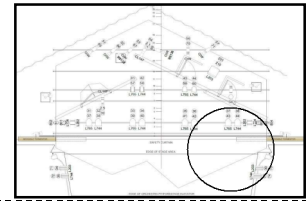
DS: **Edge of Stage**

SR: **Squared Off**

SL: **Squared Off To Edge of Flats**

Top:

Bot:



(33) CCT Starlette 2kW Fresnel 2kw Top Wash

DSR @ 2m

Nt: **Wide Topwash - Off Audience**

Scy:

Bea In/Sp - - + - ⊖ Out/Fl

Axis: | ⊖ / \ L/R US/DS

US: **Squared Off**

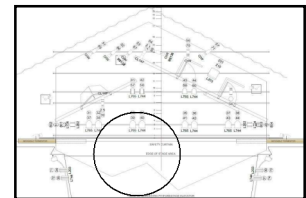
DS: **Edge of Stage**

SR: **Squared Off**

SL: **Squared Off**

Top:

Bot:



(35) CCT Starlette 2kW Fresnel 2kw Top Wash

DSL @ 2m

Nt: **Wide Topwash - Off Audience**

Scy:

Bea In/Sp - - + - ⊖ Out/Fl

Axis: | ⊖ / \ L/R US/DS

US: **Squared Off**

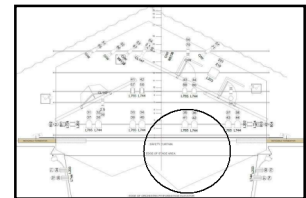
DS: **Edge of Stage**

SR: **Squared Off**

SL: **Squared Off**

Top:

Bot:



FOCUS NOTES

LX 1

Chan	Instrument Type	Wattage	Purpose	Access
------	-----------------	---------	---------	--------

(32) CCT Starlette 2kW Fresnel 2kw Top Wash

DSR @ 4m

Nt: **Wide Topwash - Off Audience**

Scy:

Bea In/Sp - - + - ⊖ Out/Fl

Axis: | ⊖ / \ L/R US/DS

US: **Squared Off**

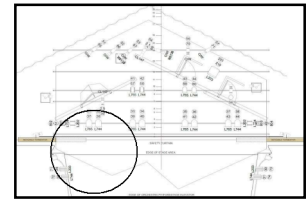
DS: **Edge of Stage**

SR: **Squared Off To Edge of Flats**

SL: **Squared Off**

Top:

Bot:



(38) CCT Starlette 2kW Fresnel 2kw Top Wash

DSL @ 4m

Nt: **Wide Topwash - Off Audience**

Scy:

Bea In/Sp - - + - ⊖ Out/Fl

Axis: | ⊖ / \ L/R US/DS

US: **Squared Off**

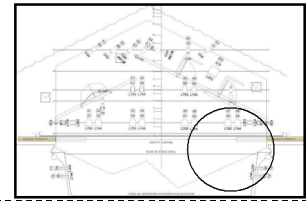
DS: **Edge of Stage**

SR: **Squared Off**

SL: **Squared Off To Edge of Flats**

Top:

Bot:



(34) CCT Starlette 2kW Fresnel 2kw Top Wash

DSR @ 2m

Nt: **Wide Topwash - Off Audience**

Scy:

Bea In/Sp - - + - ⊖ Out/Fl

Axis: | ⊖ / \ L/R US/DS

US: **Squared Off**

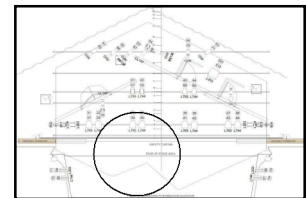
DS: **Edge of Stage**

SR: **Squared Off**

SL: **Squared Off**

Top:

Bot:



(36) CCT Starlette 2kW Fresnel 2kw Top Wash

DSL @ 2m

Nt: **Wide Topwash - Off Audience**

Scy:

Bea In/Sp - - + - ⊖ Out/Fl

Axis: | ⊖ / \ L/R US/DS

US: **Squared Off**

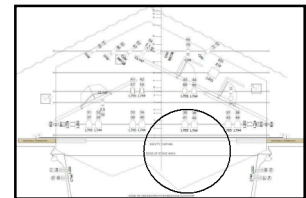
DS: **Edge of Stage**

SR: **Squared Off**

SL: **Squared Off**

Top:

Bot:



FOCUS NOTES

LX 3

Chan	Instrument Type	Wattage	Purpose	Access
(58)	Source 4 26deg	750w	Doorway Spot	
	@		Nt: Tight focus behind white door	

Scy:

Bea In/Sp - - + - - Out/FI

US:

SR: **Edge of flat**

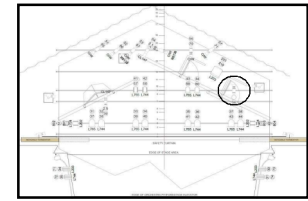
Top: **Edge of Doorway**

Axis: | — / \ L/R US/DS

DS:

SL: **Edge of flat**

Bot: **Edge of flat**



(39)	Source 4 Daylight LED	157w	Bed Spot	
	@		Nt: Bed Spot - Soft Edge to Edge of Bed	

Scy:

Bea In/Sp - - + - - Out/FI

US:

SR: **Edge of Bed**

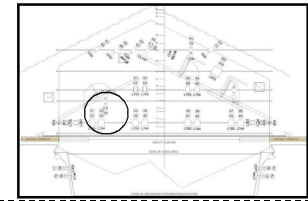
Top: **Edge of Bed**

Axis: | — / \ L/R US/DS

DS:

SL: **Edge of Bed**

Bot: **Edge of Bed**



FOCUS NOTES

LX 4

Chan	Instrument Type	Wattage	Purpose	Access
(41)	Selecon 1.2kW Fresnel	1.2kw	Topwash	

SR of Apex @ 2m

Nt: **Wide Topwash - Off US Flats**

Scy:

Bea In/Sp - - + - ⊖ Out/Fl

Axis: | — ∅ \ L/R US/DS

US: **Edge of US Flat**

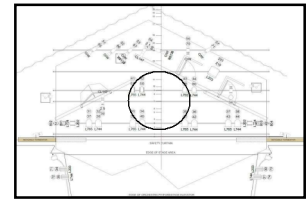
DS: **Out**

SR: **Squared Off**

SL: **Squared Off**

Top:

Bot:



(43)	Selecon 1.2kW Fresnel	1.2kw	Topwash	
------	-----------------------	-------	---------	--

SL of Apex @ 2m

Nt: **Wide Topwash - Off US Flats**

Scy:

Bea In/Sp - - + - ⊖ Out/Fl

Axis: | — ∅ \ L/R US/DS

US: **Edge of US Flat**

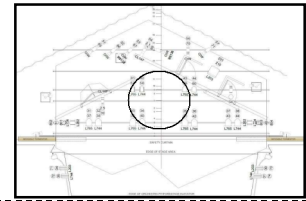
DS: **Out**

SR: **Squared Off**

SL: **Squared Off**

Top:

Bot:



(42)	Selecon 1.2kW Fresnel	1.2kw	Topwash	
------	-----------------------	-------	---------	--

SR of Apex @ 2m

Nt: **Wide Topwash - Off US Flats**

Scy:

Bea In/Sp - - + - ⊖ Out/Fl

Axis: | — ∅ \ L/R US/DS

US: **Edge of US Flat**

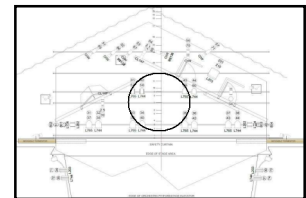
DS: **Out**

SR: **Squared Off**

SL: **Squared Off**

Top:

Bot:



(44)	Selecon 1.2kW Fresnel	1.2kw	Topwash	
------	-----------------------	-------	---------	--

SL of Apex @ 2m

Nt: **Wide Topwash - Off US Flats**

Scy:

Bea In/Sp - - + - ⊖ Out/Fl

Axis: | — ∅ \ L/R US/DS

US: **Edge of US Flat**

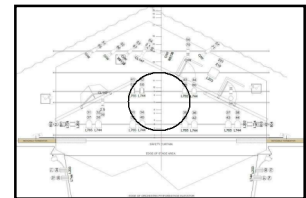
DS: **Out**

SR: **Squared Off**

SL: **Squared Off**

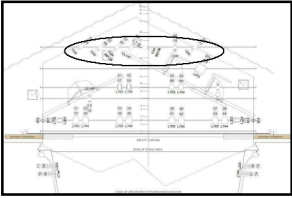
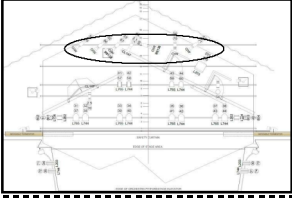
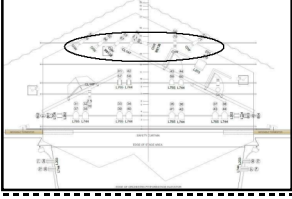
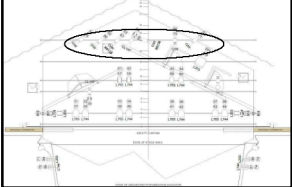
Top:

Bot:



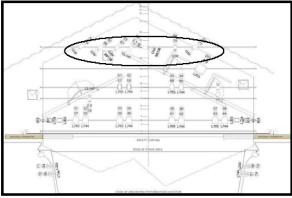
FOCUS NOTES

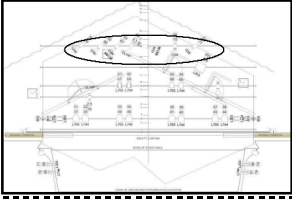
LX 6

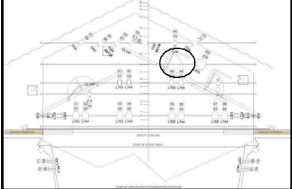
Chan	Instrument Type	Wattage	Purpose	Access
(51)	Source 4 19deg @	750w	Gallery Bar Nt: No specific focus - as long as spot not seen by audience and front of lantern is seen	
Scy:				
Bea	In/Sp - - + - - Out/FI	Axis: - / \ L/R US/DS		
US:		DS:		
SR:		SL:		
Top:		Bot:		
(52)	Source 4 19deg @	750w	Gallery Bar Nt: No specific focus - as long as spot not seen by audience and front of lantern is seen	
Scy:				
Bea	In/Sp - - + - - Out/FI	Axis: - / \ L/R US/DS		
US:		DS:		
SR:		SL:		
Top:		Bot:		
(53)	Source 4 19deg @	750w	Gallery Bar Nt: No specific focus - as long as spot not seen by audience and front of lantern is seen	
Scy:				
Bea	In/Sp - - + - - Out/FI	Axis: - / \ L/R US/DS		
US:		DS:		
SR:		SL:		
Top:		Bot:		
(55)	Source 4 19deg @	750w	Gallery Bar Nt: No specific focus - as long as spot not seen by audience and front of lantern is seen	
Scy:				
Bea	In/Sp - - + - - Out/FI	Axis: - / \ L/R US/DS		
US:		DS:		
SR:		SL:		
Top:		Bot:		

FOCUS NOTES

LX 6

Chan	Instrument Type	Wattage	Purpose	Access
(56)	Source 4 19deg @	750w	Gallery Bar Nt: No specific focus - as long as spot not seen by audience and front of lantern is seen	
Scy:				
Bea	In/Sp - - + - - Out/FI	Axis: - / \	L/R US/DS	
US:		DS:		
SR:		SL:		
Top:		Bot:		

(57)	Source 4 19deg @	750w	Gallery Bar Nt: No specific focus - as long as spot not seen by audience and front of lantern is seen	
Scy:				
Bea	In/Sp - - + - - Out/FI	Axis: - / \	L/R US/DS	
US:		DS:		
SR:		SL:		
Top:		Bot:		

(54)	Source 4 Daylight LED @	157w	Doorway Spot Nt: Tight focus behind blue door	
Scy:				
Bea	In/Sp - - + - - Out/FI	Axis: - / \	L/R US/DS	
US:		DS:		
SR:	Edge of flat	SL:	Edge of flat	
Top:	Edge of Doorway	Bot:	Edge of flat	

FOCUS NOTES

LX 5

Chan	Instrument Type	Wattage	Purpose	Access
(201)	ADB CH50	5kw	Sun	
	CS @ 4m		Nt: Sun spilling down SR flat above bed - Narrow as possible - See Image	

Scy:

Bea In/Sp - - + - - Out/FI

Axis: ⊕ — / \ L/R US/DS

US: **Off border**

DS: **Off US Blacks**

SR:

SL:

Top: **Out**

Bot: **Out**



FOCUS NOTES

Floor

Chan	Instrument Type	Wattage	Purpose	Access
(104)	Source 4 50deg @	750w	Gobo	
Nt: Breakup Effect - Sharp as possible - Light coming from a seperate room				
Scy:				
Bea	In/Sp - - + - -	Out/FI	Axis: - / \ L/R US/DS	
US:		DS:		
SR:	Right edge of doorway	SL:	Left edge of doorway	
Top:	Top edge of doorway	Bot:	Bottom edge of doorway	

(102)	Source 4 50deg @	750w	Gobo	
Nt: Breakup Effect - Sharp as possible - Light coming from a seperate room				
Scy:				
Bea	In/Sp - - + - -	Out/FI	Axis: - / \ L/R US/DS	
US:		DS:		
SR:	Right edge of doorway	SL:	Left edge of doorway	
Top:	Top edge of doorway	Bot:	Bottom edge of doorway	

(101)	Source 4 50deg @	750w	Sidelight	
Nt: Effect - Sharp as possible - Light coming from a seperate room				
Scy:				
Bea	In/Sp - - + - -	Out/FI	Axis: - / \ L/R US/DS	
US:		DS:		
SR:	Right edge of doorway	SL:	Left edge of doorway	
Top:	Top edge of doorway	Bot:	Bottom edge of doorway	

(103)	Source 4 50deg @	750w	Sidelight	
Nt: Effect - Sharp as possible - Light coming from a seperate room				
Scy:				
Bea	In/Sp - - + - -	Out/FI	Axis: - / \ L/R US/DS	
US:		DS:		
SR:	Right edge of doorway	SL:	Left edge of doorway	
Top:	Top edge of doorway	Bot:	Bottom edge of doorway	

FOCUS NOTES

Floor

Chan	Instrument Type	Wattage	Purpose	Access
------	-----------------	---------	---------	--------

(108) Source 4 36deg
@

750w Sidelight

Nt: Sidelight - Sharp as possible - Light coming from another room

Scy:

Bea In/Sp - - + - - Out/FI

Axis: | - / \ L/R US/DS

US:

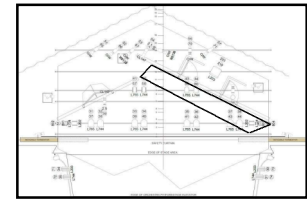
DS:

SR: Off SL Flat

SL: Off SR Flat

Top: Out

Bot: Squared off to edge of flat



(106) Source 4 36deg
@

750w Sidelight

Nt: Sidelight - Sharp as possible - Light coming from another room

Scy:

Bea In/Sp - - + - - Out/FI

Axis: | - / \ L/R US/DS

US:

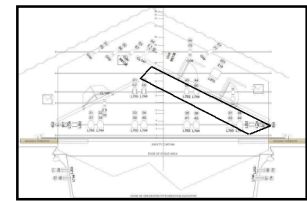
DS:

SR: Off SL Flat

SL: Off SR Flat

Top: Out

Bot: Squared off to edge of flat



(105) Source 4 36deg
@

750w Sidelight

Nt: Sidelight - Sharp as possible - Light coming from another room

Scy:

Bea In/Sp - - + - - Out/FI

Axis: | - / \ L/R US/DS

US:

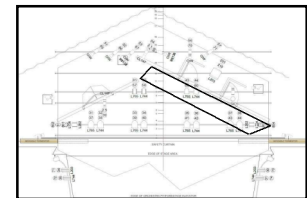
DS:

SR: Off SL Flat

SL: Off SR Flat

Top: Out

Bot: Squared off to edge of flat



(107) Source 4 36deg
@

750w Sidelight

Nt: Sidelight - Sharp as possible - Light coming from another room

Scy:

Bea In/Sp - - + - - Out/FI

Axis: | - / \ L/R US/DS

US:

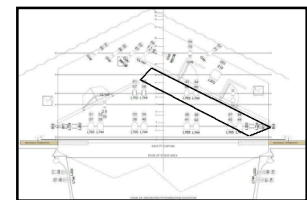
DS:

SR: Off SL Flat

SL: Off SR Flat

Top: Out

Bot: Squared off to edge of flat



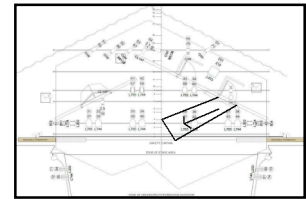
FOCUS NOTES

Floor

Chan	Instrument Type	Wattage	Purpose	Access
(112)	Source 4 36deg	750w	Sidelight	
	@		Nt: Effect - Sharp as possible - Light coming from outside	

Scy:

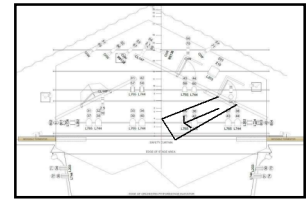
Bea In/Sp - - + - - Out/FI Axis: | - / \ L/R US/DS
 US: DS:
 SR: **Right edge of doorway** SL: **Left edge of doorway**
 Top: **Top edge of doorway** Bot: **Bottom edge of doorway**



(110)	Source 4 36deg	750w	Sidelight	
	@		Nt: Effect - Sharp as possible - Light coming from outside	

Scy:

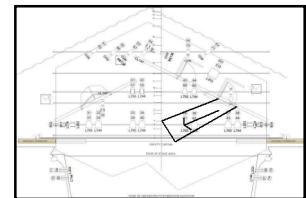
Bea In/Sp - - + - - Out/FI Axis: | - / \ L/R US/DS
 US: DS:
 SR: **Right edge of doorway** SL: **Left edge of doorway**
 Top: **Top edge of doorway** Bot: **Bottom edge of doorway**



(109)	Source 4 36deg	750w	Sidelight	
	@		Nt: Effect - Sharp as possible - Light coming from outside	

Scy:

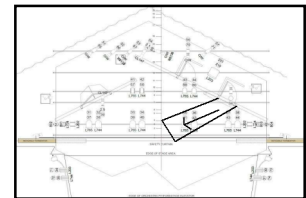
Bea In/Sp - - + - - Out/FI Axis: | - / \ L/R US/DS
 US: DS:
 SR: **Right edge of doorway** SL: **Left edge of doorway**
 Top: **Top edge of doorway** Bot: **Bottom edge of doorway**



(111)	Source 4 36deg	750w	Sidelight	
	@		Nt: Effect - Sharp as possible - Light coming from outside	

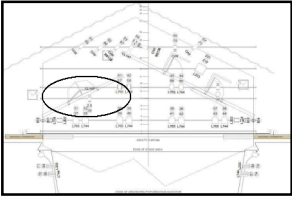
Scy:

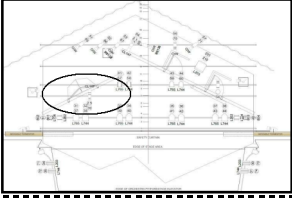
Bea In/Sp - - + - - Out/FI Axis: | - / \ L/R US/DS
 US: DS:
 SR: **Right edge of doorway** SL: **Left edge of doorway**
 Top: **Top edge of doorway** Bot: **Bottom edge of doorway**

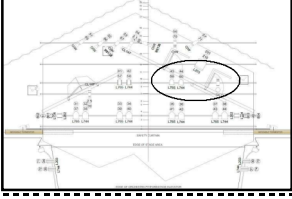


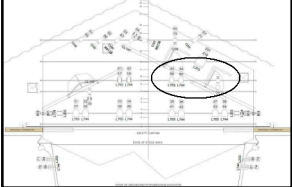
FOCUS NOTES

Gods

Chan	Instrument Type	Wattage	Purpose	Access
(603)	Selecon 1.2kW Fresnel	1.2kw	Frontwash	
	@		Nt: Front fill - wide as possible onto SR flat	
Scy:				
Bea	In/Sp - - + - - (Out/Fl)	Axis: - / \	L/R US/DS	
US:		DS:		
SR:	Edge of flat	SL:	Edge of flat	
Top:	Off border	Bot:	Edge of Pit	

(604)	Selecon 1.2kW Fresnel	1.2kw	Frontwash	
	@		Nt: Front fill - wide as possible onto SR flat	
Scy:				
Bea	In/Sp - - + - - (Out/Fl)	Axis: - / \	L/R US/DS	
US:		DS:		
SR:	Edge of flat	SL:	Edge of flat	
Top:	Off border	Bot:	Edge of Pit	

(602)	Selecon 1.2kW Fresnel	1.2kw	Frontwash	
	@		Nt: Front fill - wide as possible onto SL flat	
Scy:				
Bea	In/Sp - - + - - (Out/Fl)	Axis: - / \	L/R US/DS	
US:		DS:		
SR:	Edge of flat	SL:	Edge of flat	
Top:	Off border	Bot:	Edge of Pit	

(601)	Selecon 1.2kW Fresnel	1.2kw	Frontwash	
	@		Nt: Front fill - wide as possible onto SL flat	
Scy:				
Bea	In/Sp - - + - - (Out/Fl)	Axis: - / \	L/R US/DS	
US:		DS:		
SR:	Edge of flat	SL:	Edge of flat	
Top:	Off border	Bot:	Edge of Pit	

FOCUS NOTES

Gods

Chan	Instrument Type	Wattage	Purpose	Access
(903)	Source 4 19deg	750w	Signers Lights	

DSR @ 5m

Nt: **Signers light - wide cut to light hands**

Scy:

Bea In/Sp - - + - - Out/FI

Axis: | — / \ L/R US/DS

US:

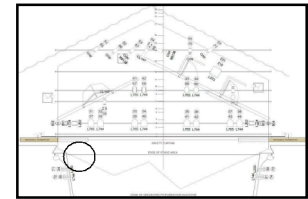
DS:

SR: **2ft from body**

SL: **2ft from body**

Top: **2ft from body**

Bot: **Hip height**



(904)	Source 4 19deg	750w	Signers Lights	
-------	----------------	------	----------------	--

DSR @ 5m

Nt: **Signers light - wide cut to light hands**

Scy:

Bea In/Sp - - + - - Out/FI

Axis: | — / \ L/R US/DS

US:

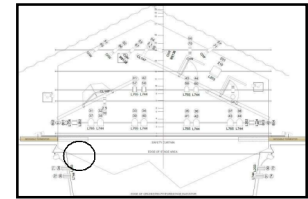
DS:

SR: **2ft from body**

SL: **2ft from body**

Top: **2ft from body**

Bot: **Hip height**



(403)	Source 4 14 Deg	750w	Paintings	
-------	-----------------	------	-----------	--

@

Nt: **Spot on DS Painting - See image**

Scy:

Bea In/Sp - - + - - Out/FI

Axis: | — / \ L/R US/DS

US:

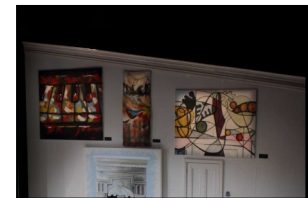
DS:

SR: **Edge of Painting**

SL: **Edge of Painting**

Top: **Edge of Painting**

Bot: **Edge of Painting**



(401)	Source 4 14 Deg	750w	Paintings	
-------	-----------------	------	-----------	--

@

Nt: **Spot on Middle Painting - See image**

Scy:

Bea In/Sp - - + - - Out/FI

Axis: | — / \ L/R US/DS

US:

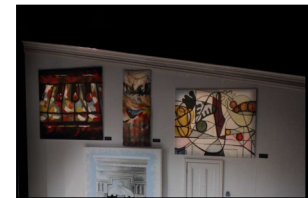
DS:

SR: **Edge of Painting**

SL: **Edge of Painting**

Top: **Edge of Painting**

Bot: **Edge of Painting**



FOCUS NOTES

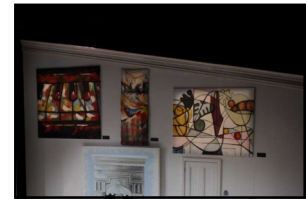
Gods

Chan	Instrument Type	Wattage	Purpose	Access
(402)	Source 4 14 Deg @	750w	Paintings	

Nt: **Spot on US Painting - See image**

Scy:

Bea In/Sp - - + - - Out/FI Axis: | — / \ L/R US/DS
 US: DS:
 SR: **Edge of Painting** SL: **Edge of Painting**
 Top: **Edge of Painting** Bot: **Edge of Painting**

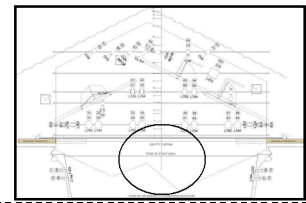


(3)	Source 4 26deg DSC @ 0	750w	FoH Wash	
-----	----------------------------------	------	----------	--

Nt: **Sharp as possible - add frost**

Scy:

Bea In/Sp - - + - - Out/FI Axis: | — / \ L/R US/DS
 US: DS:
 SR: **Out** SL: **Out**
 Top: **Off border** Bot: **To The Edge of the Pit**

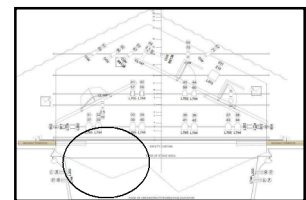


(1)	Source 4 26deg DSR @ 4m	750w	FoH Wash	
-----	-----------------------------------	------	----------	--

Nt: **Sharp as possible - add frost**

Scy:

Bea In/Sp - - + - - Out/FI Axis: | — / \ L/R US/DS
 US: DS:
 SR: **Off Proscenium + Circles** SL: **Out**
 Top: **Off border** Bot: **To The Edge of the Pit**

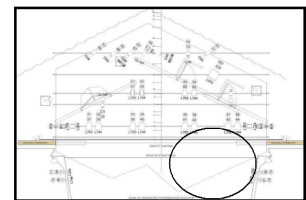


(5)	Source 4 26deg DSL @ 4m	750w	FoH Wash	
-----	-----------------------------------	------	----------	--

Nt: **Sharp as possible - add frost**

Scy:

Bea In/Sp - - + - - Out/FI Axis: | — / \ L/R US/DS
 US: DS:
 SR: **Out** SL: **Off Proscenium + Circles**
 Top: **Off border** Bot: **To The Edge of the Pit**



FOCUS NOTES

Gods

Chan	Instrument Type	Wattage	Purpose	Access
------	-----------------	---------	---------	--------

(6) Source 4 26deg 750w FoH Wash

DSL @ 4m

Nt: **Sharp as possible - add frost**

Scy:

Bea In/Sp - - + - - Out/Fl

Axis: | — / \ L/R US/DS

US:

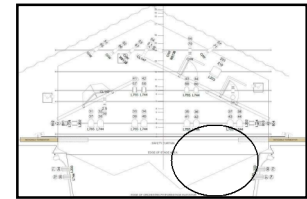
DS:

SR: **Out**

SL: **Off Proscenium + Circles**

Top: **Off border**

Bot: **To The Edge of the Pit**



(4) Source 4 26deg 750w FoH Wash

DSC @ 0

Nt: **Sharp as possible - add frost**

Scy:

Bea In/Sp - - + - - Out/Fl

Axis: | — / \ L/R US/DS

US:

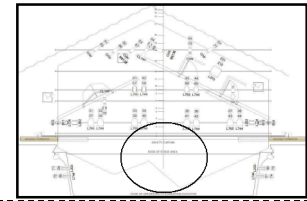
DS:

SR: **Out**

SL: **Out**

Top: **Off border**

Bot: **To The Edge of the Pit**



(2) Source 4 26deg 750w FoH Wash

DSR @ 4m

Nt: **Sharp as possible - add frost**

Scy:

Bea In/Sp - - + - - Out/Fl

Axis: | — / \ L/R US/DS

US:

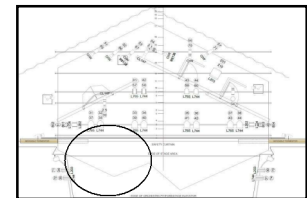
DS:

SR: **Off Proscenium + Circles**

SL: **Out**

Top: **Off border**

Bot: **To The Edge of the Pit**



(4) Source 4 26deg 750w FoH Wash

DSC @ 0

Nt: **Sharp as possible - add frost**

Scy:

Bea In/Sp - - + - - Out/Fl

Axis: | — / \ L/R US/DS

US:

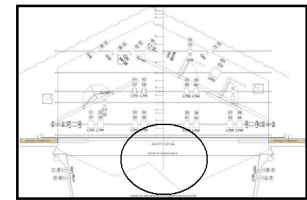
DS:

SR: **Out**

SL: **Out**

Top: **Off border**

Bot: **To The Edge of the Pit**



FOCUS NOTES

Gods

Chan	Instrument Type	Wattage	Purpose	Access
------	-----------------	---------	---------	--------

(6) Source 4 26deg 750w FoH Wash

DSL @ 4m

Nt: **Sharp as possible - add frost**

Scy:

Bea In/Sp - - + - - Out/FI

Axis: | - / \ L/R US/DS

US:

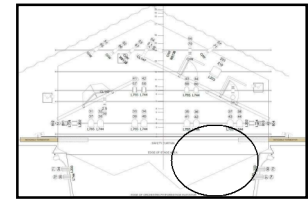
DS:

SR: **Out**

SL: **Off Proscenium + Circles**

Top: **Off border**

Bot: **To The Edge of the Pit**



(2) Source 4 26deg 750w FoH Wash

DSR @ 4m

Nt: **Sharp as possible - add frost**

Scy:

Bea In/Sp - - + - - Out/FI

Axis: | - / \ L/R US/DS

US:

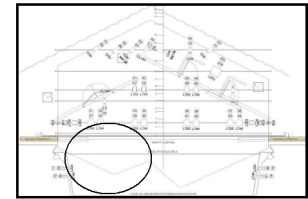
DS:

SR: **Off Proscenium + Circles**

SL: **Out**

Top: **Off border**

Bot: **To The Edge of the Pit**



(1) Source 4 26deg 750w FoH Wash

DSR @ 4m

Nt: **Sharp as possible - add frost**

Scy:

Bea In/Sp - - + - - Out/FI

Axis: | - / \ L/R US/DS

US:

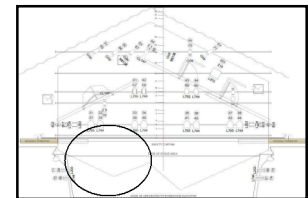
DS:

SR: **Off Proscenium + Circles**

SL: **Out**

Top: **Off border**

Bot: **To The Edge of the Pit**



(3) Source 4 26deg 750w FoH Wash

DSC @ 0

Nt: **Sharp as possible - add frost**

Scy:

Bea In/Sp - - + - - Out/FI

Axis: | - / \ L/R US/DS

US:

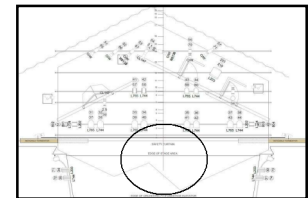
DS:

SR: **Out**

SL: **Out**

Top: **Off border**

Bot: **To The Edge of the Pit**



FOCUS NOTES

Gods

Chan	Instrument Type	Wattage	Purpose	Access
(5)	Source 4 26deg	750w	FoH Wash	

DSL @ 4m

Nt: Sharp as possible - add frost

Scy:

Bea In/Sp - - + - - Out/FI

Axis: | — / \ L/R US/DS

US:

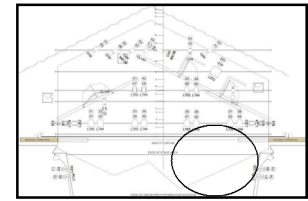
DS:

SR: **Out**

SL: **Off Proscenium + Circles**

Top: **Off border**

Bot: **To The Edge of the Pit**



FOCUS NOTES

Catwalk 1

Chan	Instrument Type	Wattage	Purpose	Access
------	-----------------	---------	---------	--------

(10) Source 4 19deg 750w FoH Wash

CS @ 0

Nt: **Sharp as possible - add frost**

Scy:

Bea In/Sp - - + - - Out/FI

Axis: | — / \ L/R US/DS

US:

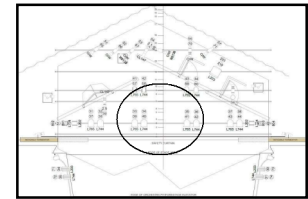
DS:

SR: **Off Proscenium**

SL: **Out**

Top: **Off border**

Bot: **Lined Up With Other US Wash**



(7) Source 4 19deg 750w FoH Wash

CSR @ 4m

Nt: **Sharp as possible - add frost**

Scy:

Bea In/Sp - - + - - Out/FI

Axis: | — / \ L/R US/DS

US:

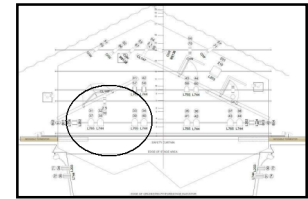
DS:

SR: **Off Proscenium**

SL: **Off Proscenium + Circles**

Top: **Off border**

Bot: **To The Edge of the Pit**



(8) Source 4 19deg 750w FoH Wash

CSR @ 4m

Nt: **Sharp as possible - add frost**

Scy:

Bea In/Sp - - + - - Out/FI

Axis: | — / \ L/R US/DS

US:

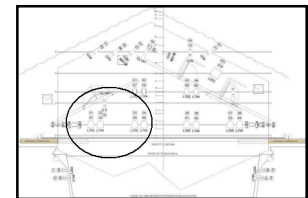
DS:

SR: **Off Proscenium**

SL: **Off Proscenium + Circles**

Top: **Off border**

Bot: **To The Edge of the Pit**



(7) Source 4 19deg 750w FoH Wash

CSR @ 4m

Nt: **Sharp as possible - add frost**

Scy:

Bea In/Sp - - + - - Out/FI

Axis: | — / \ L/R US/DS

US:

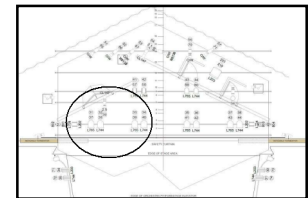
DS:

SR: **Off Proscenium**

SL: **Off Proscenium + Circles**

Top: **Off border**

Bot: **To The Edge of the Pit**



FOCUS NOTES

Catwalk 1

Chan	Instrument Type	Wattage	Purpose	Access
------	-----------------	---------	---------	--------

(9) Source 4 19deg

750w FoH Wash

CS @ 0

Nt: **Sharp as possible - add frost**

Scy:

Bea In/Sp - - + - - Out/FI

Axis: | - / \ L/R US/DS

US:

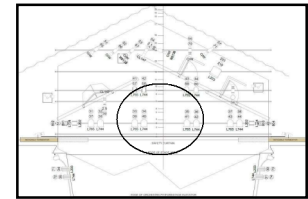
DS:

SR: **Off Proscenium**

SL: **Out**

Top: **Off border**

Bot: **Lined Up With Other US Wash**



(8) Source 4 19deg

750w FoH Wash

CSR @ 4m

Nt: **Sharp as possible - add frost**

Scy:

Bea In/Sp - - + - - Out/FI

Axis: | - / \ L/R US/DS

US:

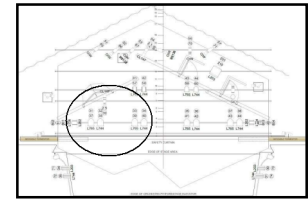
DS:

SR: **Off Proscenium**

SL: **Off Proscenium + Circles**

Top: **Off border**

Bot: **To The Edge of the Pit**



(10) Source 4 19deg

750w FoH Wash

CS @ 0

Nt: **Sharp as possible - add frost**

Scy:

Bea In/Sp - - + - - Out/FI

Axis: | - / \ L/R US/DS

US:

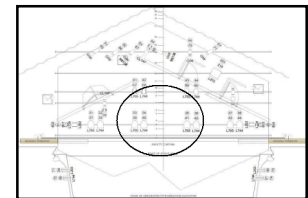
DS:

SR: **Off Proscenium**

SL: **Out**

Top: **Off border**

Bot: **Lined Up With Other US Wash**



(11) Source 4 19deg

750w FoH Wash

CSL @ 4m

Nt: **Sharp as possible - add frost**

Scy:

Bea In/Sp - - + - - Out/FI

Axis: | - / \ L/R US/DS

US:

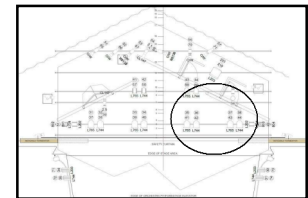
DS:

SR: **Out**

SL: **Off Proscenium + Circles**

Top: **Off border**

Bot: **Lined Up With Other US Wash**



FOCUS NOTES

Catwalk 1

Chan	Instrument Type	Wattage	Purpose	Access
------	-----------------	---------	---------	--------

(12) Source 4 19deg 750w FoH Wash

CSL @ 4m

Nt: **Sharp as possible - add frost**

Scy:

Bea In/Sp - - + - - Out/FI

Axis: | — / \ L/R US/DS

US:

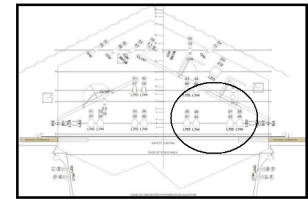
DS:

SR: **Out**

SL: **Off Proscenium + Circles**

Top: **Off border**

Bot: **Lined Up With Other US Wash**



(11) Source 4 19deg 750w FoH Wash

CSL @ 4m

Nt: **Sharp as possible - add frost**

Scy:

Bea In/Sp - - + - - Out/FI

Axis: | — / \ L/R US/DS

US:

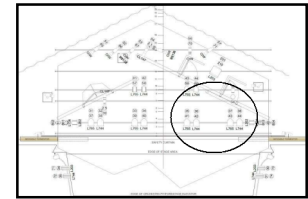
DS:

SR: **Out**

SL: **Off Proscenium + Circles**

Top: **Off border**

Bot: **Lined Up With Other US Wash**



(9) Source 4 19deg 750w FoH Wash

CS @ 0

Nt: **Sharp as possible - add frost**

Scy:

Bea In/Sp - - + - - Out/FI

Axis: | — / \ L/R US/DS

US:

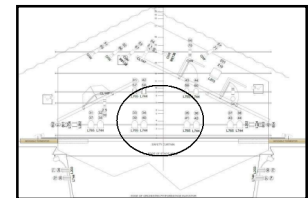
DS:

SR: **Off Proscenium**

SL: **Out**

Top: **Off border**

Bot: **Lined Up With Other US Wash**



(12) Source 4 19deg 750w FoH Wash

CSL @ 4m

Nt: **Sharp as possible - add frost**

Scy:

Bea In/Sp - - + - - Out/FI

Axis: | — / \ L/R US/DS

US:

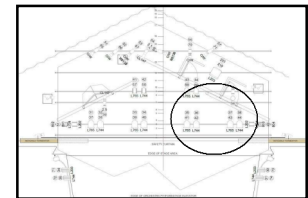
DS:

SR: **Out**

SL: **Off Proscenium + Circles**

Top: **Off border**

Bot: **Lined Up With Other US Wash**



FOCUS NOTES

1st Circle

Chan	Instrument Type	Wattage	Purpose	Access
(71)	Selecon 1.2kW PC	1.2kw	Top Crosswash	
	@		Nt: Pit Top Crosswash - Don't worry about the slips	

Scy:

Bea In/Sp - - + - - Out/FI

US: **Out**

SR:

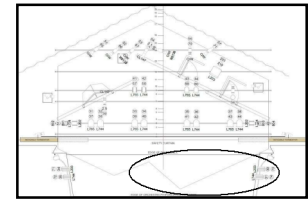
Top: **Squared Off**

Axis: ⊕ — / \ L/R US/DS

DS: **Edge of Pit**

SL:

Bot: **Squared Off**



(73)	Selecon 1.2kW PC	1.2kw	Top Crosswash	
	@		Nt: Pit Top Crosswash - Don't worry about the slips	

Scy:

Bea In/Sp - - + - - Out/FI

US: **Out**

SR:

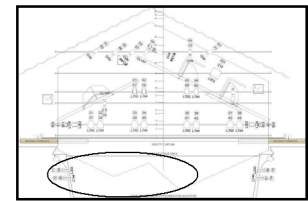
Top: **Squared Off**

Axis: ⊕ — / \ L/R US/DS

DS: **Edge of Pit**

SL:

Bot: **Squared Off**



(74)	Selecon 1.2kW PC	1.2kw	Top Crosswash	
	@		Nt: Pit Top Crosswash - Don't worry about the slips	

Scy:

Bea In/Sp - - + - - Out/FI

US: **Out**

SR:

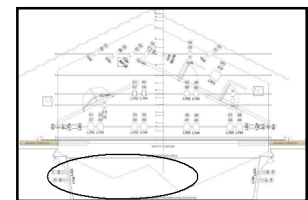
Top: **Squared Off**

Axis: ⊕ — / \ L/R US/DS

DS: **Edge of Pit**

SL:

Bot: **Squared Off**



(72)	Selecon 1.2kW PC	1.2kw	Top Crosswash	
	@		Nt: Pit Top Crosswash - Don't worry about the slips	

Scy:

Bea In/Sp - - + - - Out/FI

US: **Out**

SR:

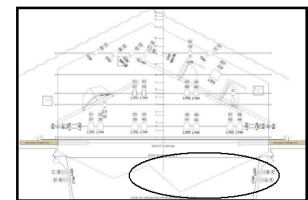
Top: **Squared Off**

Axis: ⊕ — / \ L/R US/DS

DS: **Edge of Pit**

SL:

Bot: **Squared Off**



FOCUS NOTES

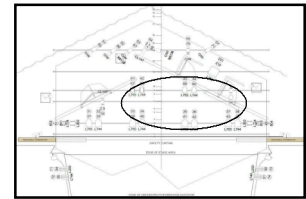
Tormentors

Chan	Instrument Type	Wattage	Purpose	Access
------	-----------------	---------	---------	--------

(91) Source 4 50deg 750w Sidelight
CS @ 0 Nt: **Wide sidelight**

Scy:

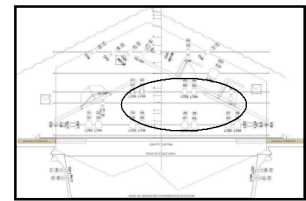
Bea In/Sp - - + - - Out/Fl Axis: | — / \ L/R US/DS
 US: **Off SR Flat** DS: **To Proscenium**
 SR: SL:
 Top: **Out** Bot: **Squared off to edge of flat**



(91) Source 4 50deg 750w Sidelight
CS @ 0 Nt: **Wide sidelight**

Scy:

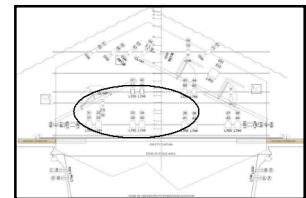
Bea In/Sp - - + - - Out/Fl Axis: | — / \ L/R US/DS
 US: **Off SR Flat** DS: **To Proscenium**
 SR: SL:
 Top: **Out** Bot: **Out**



(92) Source 4 50deg 750w Sidelight
CS @ 0 Nt: **Wide sidelight**

Scy:

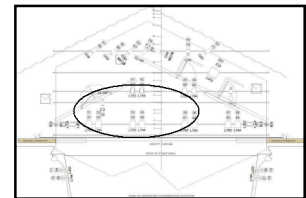
Bea In/Sp - - + - - Out/Fl Axis: | — / \ L/R US/DS
 US: **To Proscenium** DS: **Off SL Flat**
 SR: SL:
 Top: **Out** Bot: **Squared off to edge of flat**



(92) Source 4 50deg 750w Sidelight
CSR @ 0 Nt: **Wide sidelight**

Scy:

Bea In/Sp - - + - - Out/Fl Axis: | — / \ L/R US/DS
 US: **To Proscenium** DS: **Off SL Flat**
 SR: SL:
 Top: **Out** Bot: **Out**



FOCUS NOTES

FoH Booms

Chan	Instrument Type	Wattage	Purpose	Access
(702)	Selecon 1.2kW Fresnel	1.2kW	Top Crosswash	
	DS @ 0		Nt: Wide Top Crosswash	
Scy:				
Bea	In/Sp - - + - ⊖ Out/Fl	Axis: ⊕ — / \ L/R US/DS		
US:	Out	DS: Edge of Pit		
SR:		SL:		
Top:	Squared Off	Bot: Squared Off		

(701)	Selecon 1.2kW Fresnel	1.2kW	Top Crosswash	
	DS @ 0		Nt: Wide Top Crosswash	
Scy:				
Bea	In/Sp - - + - ⊖ Out/Fl	Axis: ⊕ — / \ L/R US/DS		
US:	Out	DS: Edge of Pit		
SR:		SL:		
Top:	Squared Off	Bot: Squared Off		

(703)	Selecon 1.2kW Fresnel	1.2kW	Top Crosswash	
	DS @ 0		Nt: Wide Top Crosswash	
Scy:				
Bea	In/Sp - - + - ⊖ Out/Fl	Axis: ⊕ — / \ L/R US/DS		
US:	Out	DS: Edge of Pit		
SR:		SL:		
Top:	Squared Off	Bot: Squared Off		

(704)	Selecon 1.2kW Fresnel	1.2kW	Top Crosswash	
	DS @ 0		Nt: Wide Top Crosswash	
Scy:				
Bea	In/Sp - - + - ⊖ Out/Fl	Axis: ⊕ — / \ L/R US/DS		
US:	Out	DS: Edge of Pit		
SR:		SL:		
Top:	Squared Off	Bot: Squared Off		
