

SHOW COLOURS:

L020	L103	L200	L603
L063	L174	L253	L728

KEY TO SYMBOLS:

	Source4 Lustr+ 70 Degree		Source4 19 Degree		ParCan64 CP62		Varilite 1000TSD Moving Head		Set Practicals - Desk Lamp
	Source4 50 Degree		Source4 Fresnel		ADB 5K Fresnel		Dimmable LED Fluorescent		PSUX Fluorescent Tube PSU
	Source4 36 Degree								

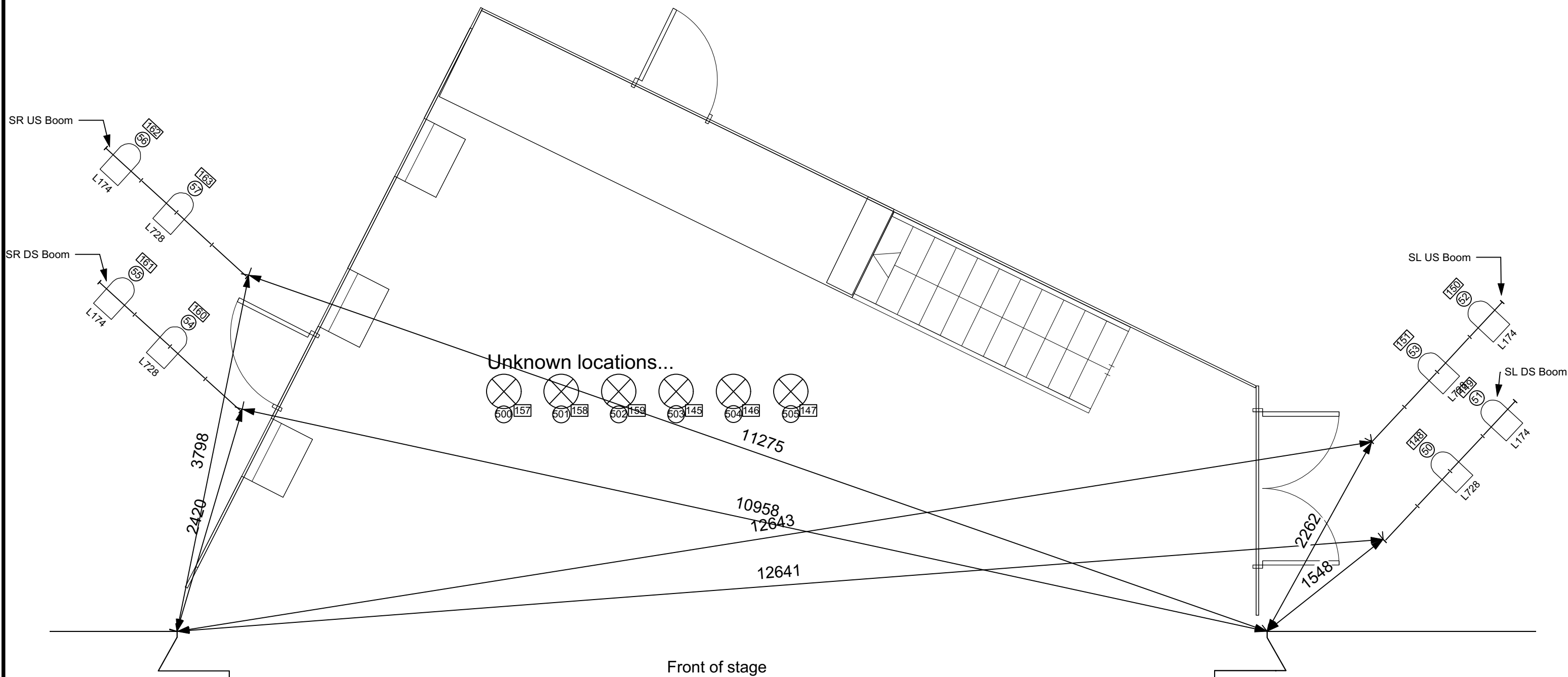
LEGEND:

- Lee Colour Reference
- LXXX**
- Lighting Instrument
- Channel Number
- Circuit Number/Reference
- Y**

THE BURIAL AT THEBES

Drawing Title: Stage Flown LX
Version 1
Set by Gillian Slater

Designer: Benny Goodman	Director: Gareth Nicholls
Drawn By: Gary Ashbridge	Scale: 1:50@A3
Venue: Athenaeum Theatre	Drawing No.:
Date: 11/10/2016	Sheet No. 1
CAD File Name: BAT LXPlan Version 1	of 7



SHOW COLOURS:

L020	L103	L200	L603
L063	L174	L253	L728

KEY TO SYMBOLS:

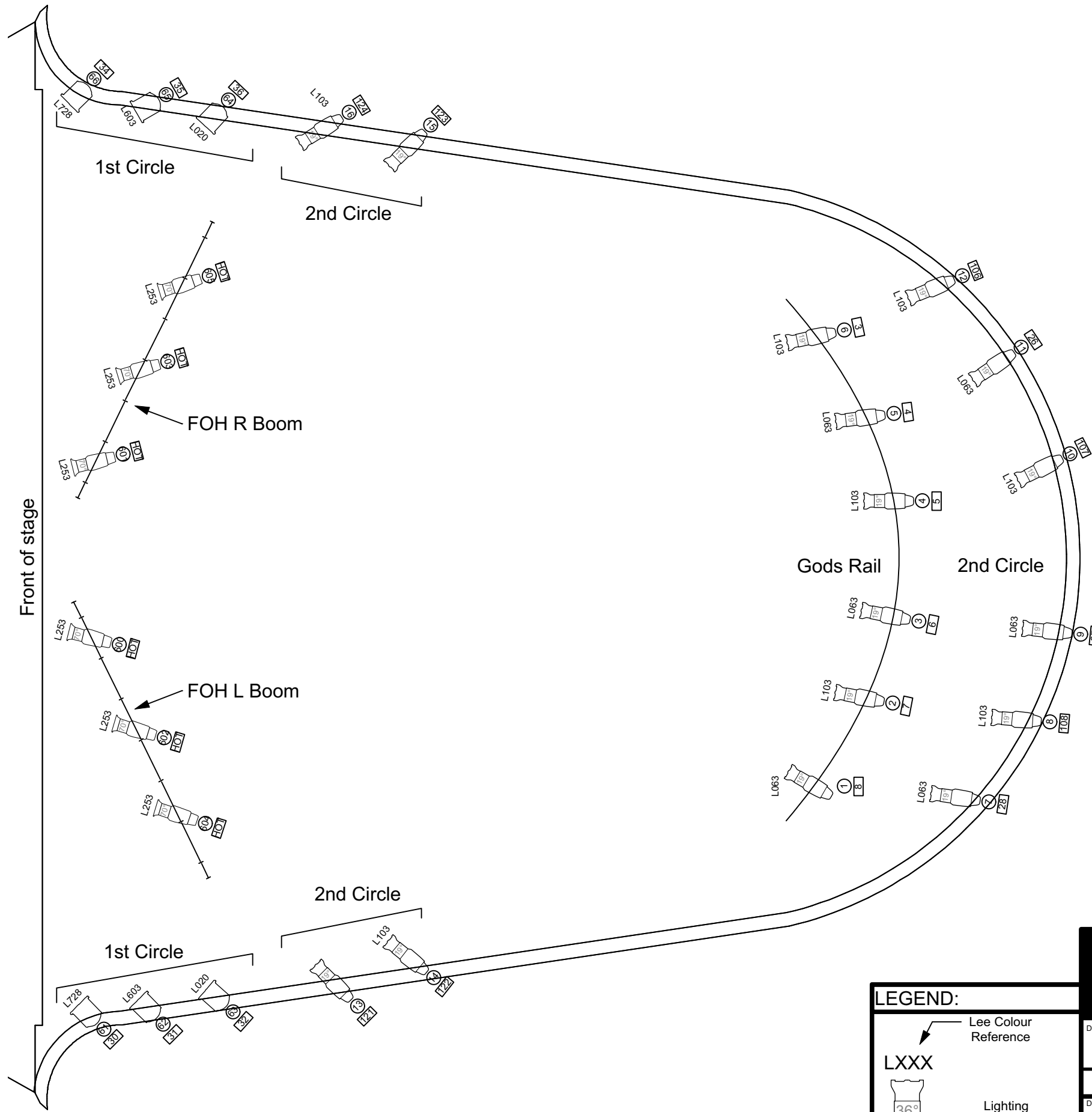
Source4 Lustr+ 70 Degree	Source4 19 Degree	ParCan64 CP62	Varilite 1000TSD Moving Head	Set Practicals - Desk Lamp	Dimmable LED Fluorescent	PSUx Fluorescent Tube PSU
Source4 50 Degree	Source4 Fresnel	ADB 5K Fresnel	FLUORESCENT			
Source4 36 Degree						

LEGEND:

Lee Colour Reference
LXXX Lighting Instrument
36° Channel Number
X Circuit Number/Reference
Y Circuit Number/Reference

THE BURIAL AT THEBES

Drawing Title		Stage Floor LX Plan Version 1	
		Set by Gillian Slater	
Designer	Benny Goodman	Director	Gareth Nicholls
Drawn By	Gary Ashbridge	Scale	1:50@A3
Venue	Athenaeum Theatre	Drawing No.	Sheet No. 2
Date	11/10/2016		of
CAD File Name	BAT LXPlan Version 1		7



KEY TO SYMBOLS:

Source4 Lustr+ 70 Degree	Source4 19 Degree	ParCan64 CP62	Varilite 1000TSD Moving Head	Set Practicals - Desk Lamp	Dimmable LED Fluorescent	PSUx Fluorescent Tube PSU
Source4 50 Degree	Source4 Fresnel	ADB 5K Fresnel	FLUORESCENT			
Source4 36 Degree						

SHOW COLOURS:

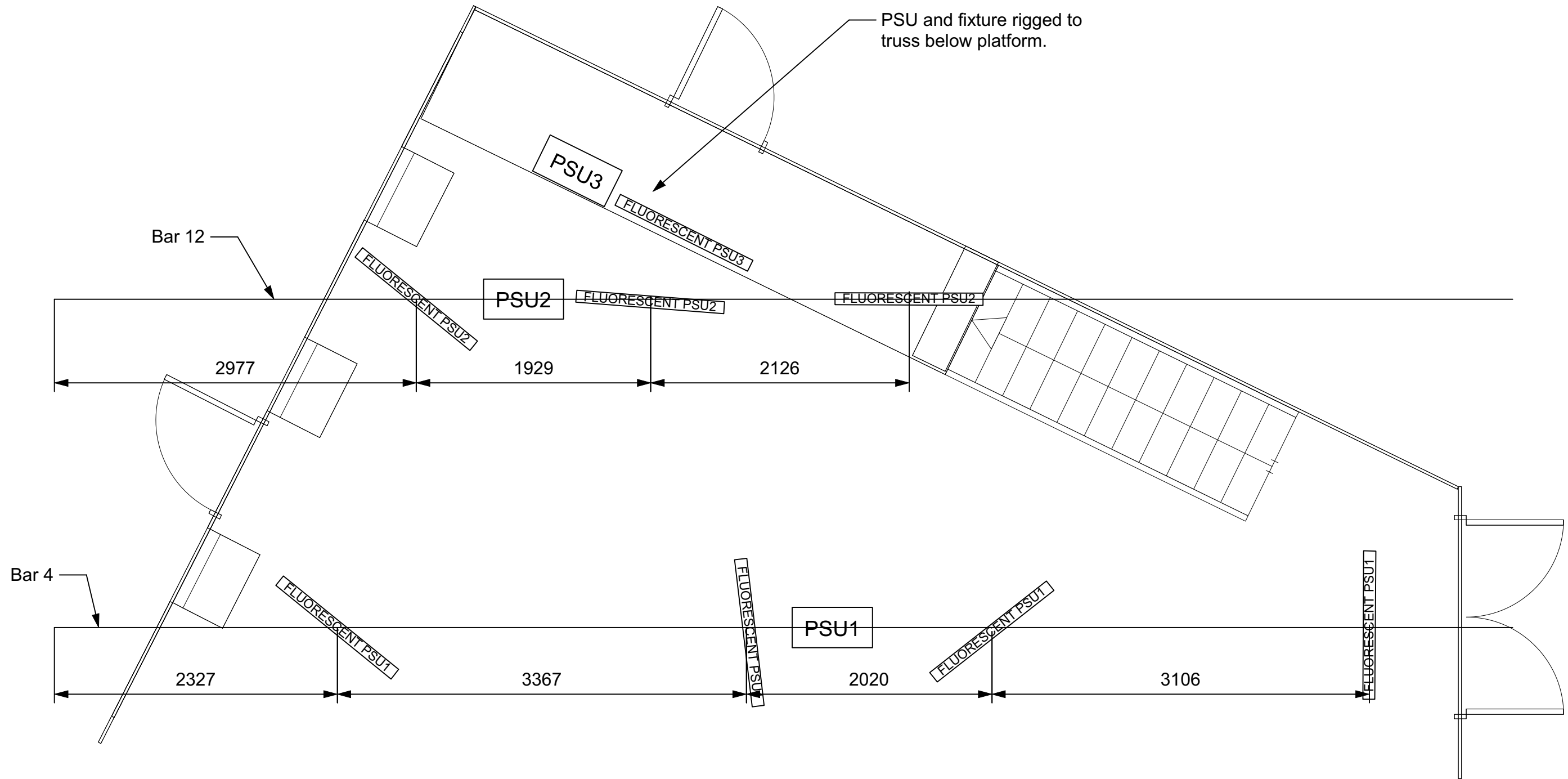
L020	L103	L200	L603
L063	L174	L253	L728

LEGEND:

- Lee Colour Reference
- LXXX
Lighting Instrument
- Channel Number
- Circuit Number/Reference

THE BURIAL AT THEBES

Drawing Title		Front Of House LX Plan Version 1	
Set by Gillian Slater			
Designer	Benny Goodman	Director	Gareth Nicholls
Drawn By	Gary Ashbridge	Scale	1:50@A3
Venue	Athenaeum Theatre	Drawing No.	Sheet No. 3
Date	11/10/2016		_____ of _____
CAD File Name	BAT LXPlan Version 1		7



SHOW COLOURS:

L020	L103	L200	L603
L063	L174	L253	L728

KEY TO SYMBOLS:

Source4 Lustr+ 70 Degree	Source4 19 Degree	ParCan64 CP62	Varilite 1000TSD Moving Head	Set Practicals - Desk Lamp	Dimmable LED Fluorescent	PSUx Fluorescent Tube PSU
Source4 50 Degree	Source4 Fresnel	ADB 5K Fresnel	FLUORESCENT			
Source4 36 Degree						

LEGEND:

Lee Colour Reference

LXXX

Lighting Instrument

36°

Channel Number

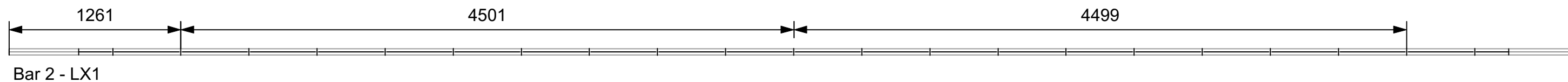
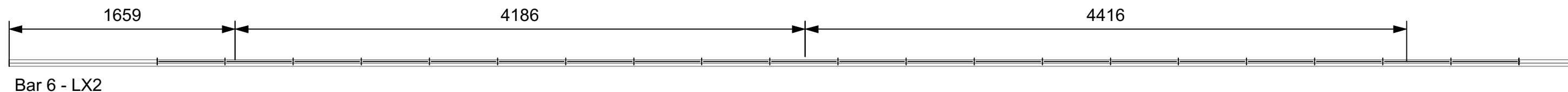
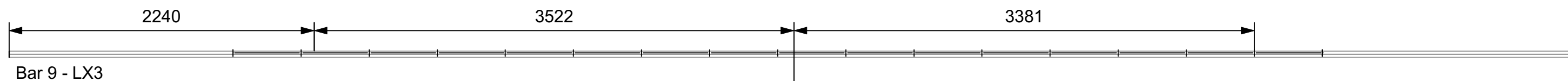
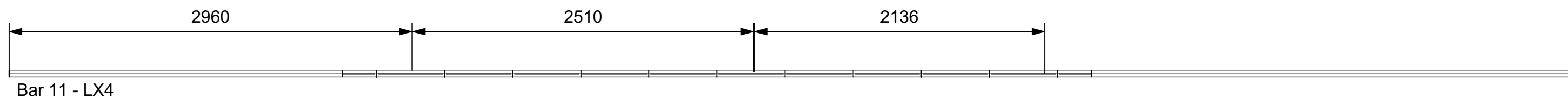
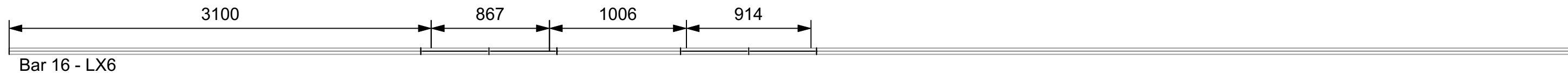
Circuit Number/Reference

Y

THE BURIAL AT THEBES

Drawing Title: Fluorescent Plan
Version 1
Set by Gillian Slater

Designer: Benny Goodman	Director: Gareth Nicholls
Drawn By: Gary Ashbridge	Scale: 1:50@A3
Venue: Athenaeum Theatre	Drawing No.:
Date: 11/10/2016	Sheet No. 4
CAD File Name: BAT LXPlan Version 1	7 of 7



Measurements shown are the position to which the 6 meter drifts are located on each counterweight bar. These are connected via barrel clamps on the counterweight and the dropped LX bar.

- LX1@ 11 meters
- LX2@ 10 meters
- LX3@ 8 meters
- LX4@ 4 meters
- LX5@ 2 meters
- LX6@ 1 meter x2 drops

SHOW COLOURS:

L020	L103	L200	L603
L063	L174	L253	L728

KEY TO SYMBOLS:

Source4 Lustr+ 70 Degree	Source4 19 Degree	ParCan64 CP62	Varilite 1000TSD Moving Head	Set Practicals - Desk Lamp	Dimmable LED Fluorescent	PSUx Fluorescent Tube PSU
Source4 50 Degree	Source4 Fresnel	ADB 5K Fresnel		FLUORESCENT		
Source4 36 Degree						

LEGEND:

Lee Colour Reference

LXXX

36°

Lighting Instrument

Channel Number

Circuit Number/Reference

Y

THE BURIAL AT THEBES

Drawing Title		Dropbar Positioning	
		Version 1	
Set by Gillian Slater			
Designer	Benny Goodman	Director	Gareth Nicholls
Drawn By	Gary Ashbridge	Scale	1:50@A3
Venue	Athenaeum Theatre	Drawing No.	Sheet No. 5
Date	11/10/2016		of
CAD File Name	BAT LXPlan Version 1		7

Bar 16 - LX6

1x 20meter soca and 1x soca breakout.

Bar 14 - LX5

1x 15 meter 16amp CEE form (possibly extensions), 16/13amp jump, 13a IEC and 20 meter DMX.

Bar 12 - PRAC2

1x 19 meter soca, 1x IWB, 1x 15 meter soca, 1x soca breakout, 1x 15/16a jump, 1x 16amp/PowerCon and 1x 20 meter DMX. See note 3.

Bar 11 - LX4

2x 20 meter soca, 1x 15 meter soca, 2x IWB, 1x soca breakout, 1x 15/16a jump 1x 16amp/PowerCon and 1x 20 meter DMX (may need DMX extension). See note 2.

Bar 9 - LX3

1x 15 meter soca, 1x 20 meter soca and 2x IWB.

Bar 6 - LX2

1x 17 meter 16amp CEE form, 16/13amp jump, 13a IEC and 20 meter DMX.

Bar 4 - PRAC1

1x 20 meter soca, 2x 15 meter soca, 2x IWB, 1x soca breakout, 1x 15/16a jump, 1x 20 meter DMX, 1x 10 meter DMX, 2x 16amp/PowerCon (possibly CEE form extnesions) and 1x 16amp Raygun .See note 1.

Bar 2 - LX1

Cables run from prompt side fly floor to counterweight bars and run down the SL drift of each bar to the drop bar.

Stage Booms-

1x 15amp 4way multicore in dip trap from USR patch to SR Booms.

1x 15amp 4way multicore in dip trap from USL patch to SL Booms.

FOH Booms -

Power via 32amp rubber box in gods with 4 ways of 16amp power to be jumped down to 15amp (4x 16/15a jumps) of which two will split via 15amp grelcos to make 76 ways of pwoer into the booms IWB soca connection in the gods. From the booms IWB, there is 1x 15a/Powercon in stock, the others are done via 5x 15/16a jumps and 5x 16a/PowerCon into the Lustr+ units.

THESE MUST BE CLEARLY LABELLED TO NOT BE PUT IN DIMMABLE CIRCUITS AND ONLY HARD POWER!

Note 1 -

One of the 15 meter socapex cables will be used for only hard power. THIS SOCA MUST BE LABELLED AS HARD POWER ONLY! This is done by a 16/15amp jump at PS flies and then a 15/16amp jump in the soca breakout on the bar going into a 16amp raygun then splitting off into the two VL's. THESE MUST BE CLEARLY LABELLED TO NOT BE PUT IN DIMMABLE CIRCUITS AND ONLY HARD POWER!

Note 2 -

One of the 20 meter socapex cables will be used for only hard power. THIS SOCA MUST BE LABELLED AS HARD POWER ONLY! This is done by a 16/15amp jump at PS flies and then a 15/16amp jump in the soca breakout on the bar going to a 16a/PowerCon to power the VL on the bar. THIS MUST BE CLEARLY LABELLED TO NOT BE PUT IN DIMMABLE CIRCUITS AND ONLY HARD POWER!

Note 3 -

The 15 meter socapex cable will be used for only hard power. THIS SOCA MUST BE LABELLED AS HARD POWER ONLY! This is done by a 16/15amp jump at PS flies and then a 15/16amp jump in the soca breakout on the bar going to a 16a/PowerCon to power the VL on the bar. THIS MUST BE CLEARLY LABELLED TO NOT BE PUT IN DIMMABLE CIRCUITS AND ONLY HARD POWER!

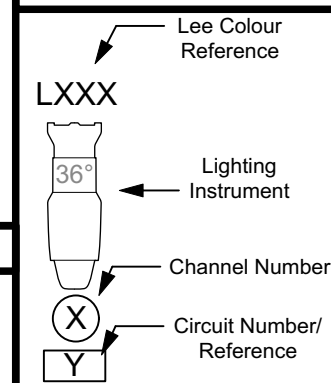
IMPORTANT! The socapex cables being used as hard power, the spare circuits on the break ins and outs must be taped shut so there is no circuits accidentally put in dimmed circuits. Standards state that dimmed and hard power must not be ran down the same socapex cable.

The 5K SR will be powered by running the 32amp cable to a dropped hemp line hanging above the tracking system (a drift will also be attached to this as a safety line for thr 5K) and the cable will jump accross to a free flybar upstage of bar 23, run along this bar and onto PS fly floor where it will be plugged in.

KEY TO SYMBOLS:



LEGEND:

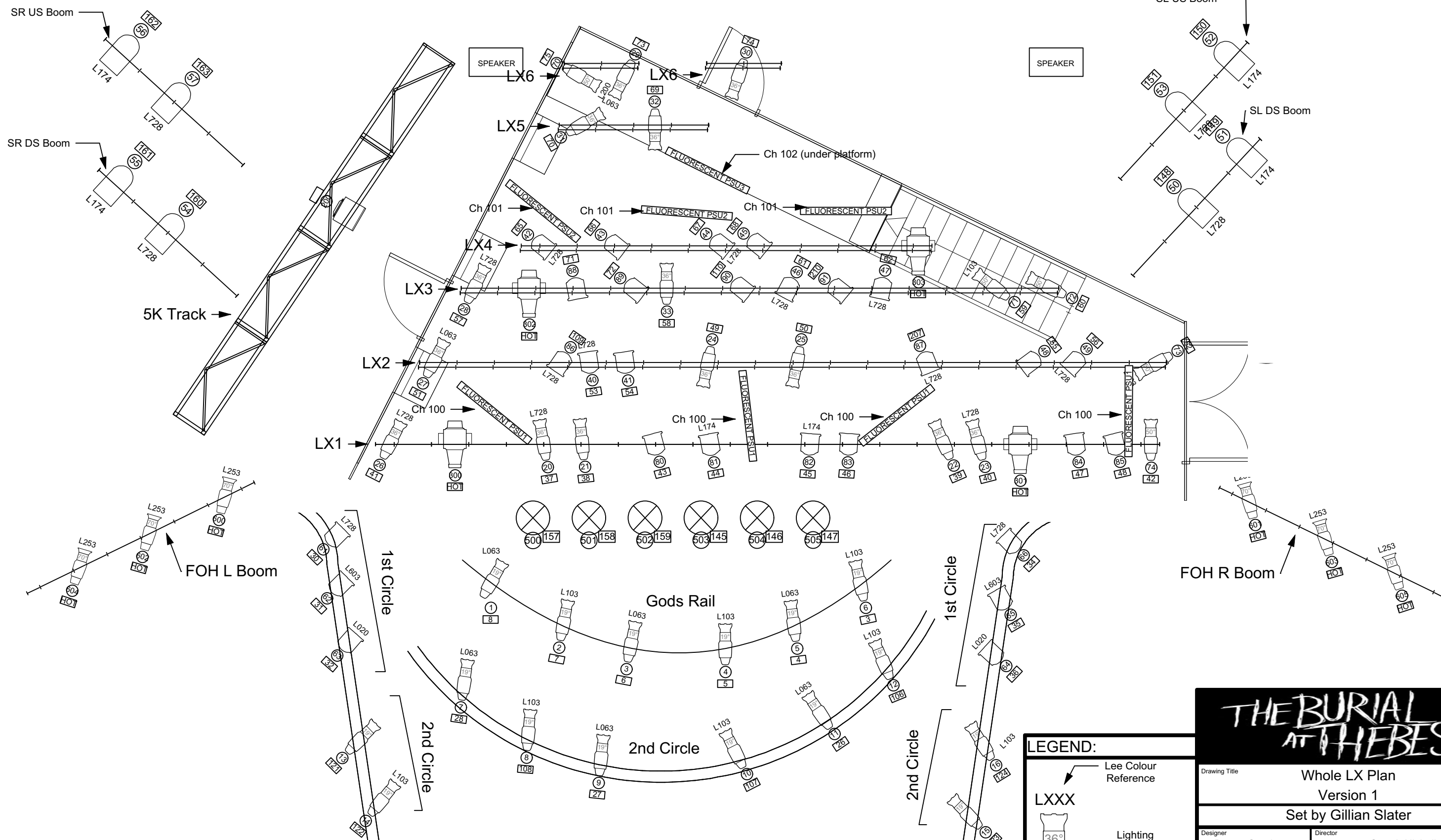


THE BURIAL AT THEBES	
Drawing Title Cable Runs Version 1	
Set by Gillian Slater	
Designer Benny Goodman	Director Gareth Nicholls
Drawn By Gary Ashbridge	Scale 1:50@A3
Venue Athenaeum Theatre	Drawing No. Sheet No. 6
Date 11/10/2016	of _____
CAD File Name BAT LXPlan Version 1	7

SHOW COLOURS:

L020	L103	L200	L603
L063	L174	L253	L728

LX7 →



KEY TO SYMBOLS:

	Source4 Lustr+ 70 Degree		Source4 19 Degree		ParCan64 CP62		Set Practicals - Desk Lamp
	Source4 50 Degree		Source4 Fresnel		ADB 5K Fresnel		Varilite 1000TSD Moving Head
	Source4 36 Degree		Dimmable LED Fluorescent		FLUORESCENT		PSUx Fluorescent Tube PSU

LEGEND:

	Lee Colour Reference
	LXXX Lighting Instrument
	Channel Number
	Circuit Number/Reference

THE BURIAL AT THEBES

Drawing Title		Whole LX Plan	
		Version 1	
		Set by Gillian Slater	
Designer	Benny Goodman	Director	Gareth Nicholls
Drawn By	Gary Ashbridge	Scale	1:50@A3
Venue	Athenaeum Theatre	Drawing No.	Sheet No. 7
Date	11/10/2016		of
CAD File Name	BAT LXPlan Version 1		7