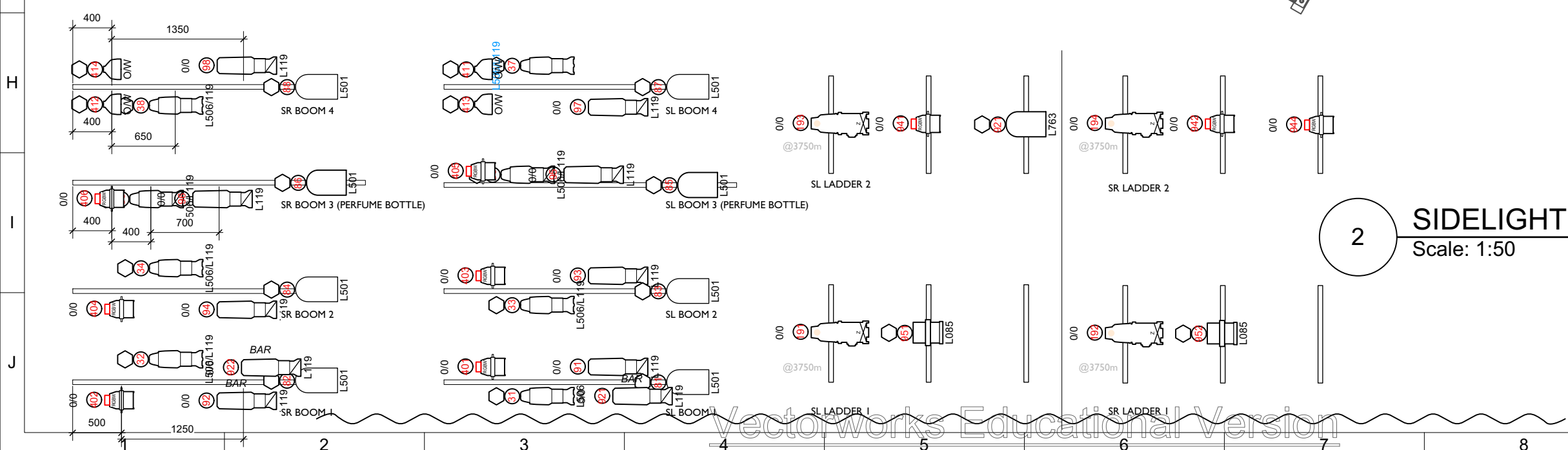


	Altman 2K Fresnel	9
	ETC Source 4 19deg	14
	ETC Source 4 26deg	2
	ETC Source 4 36deg	8
	ETC Source 4 Fresnel	15
	ETC Source 4 PAR MFL	4
	ETC Source 4 Zoom 15-30deg	10
	USITT PAR64-MFL	19
	ETC Source 4 LED 26deg	12
	ETC Source 4 LED 36deg	4
	ETC Source 4 LEDTS Zoom 25-50	4
	Martin RUSH PAR 2 RGBW Zoom	9
	Chauvet COLORdash Par Q12 IP	12
	Martin MAC Viper Performance	6
	Martin MAC Encore Performance CLD	4
	Robe CYC FX8	12
	Astera TitanTube	6
	Smoke Factory Tour Hazer II Boxed	1
	USITT Practical	16
	USITT PAR MR-16 Birdie-MFL	7

Color	Size	Count	
	L058	330mm	9
	L085	191mm	2
	L119	159mm	16
	L501	191mm	13
	L501	USITT PAR64-MFL	2
	L501	Altman PAR 64 MFL	6
	L501/L119	159mm	4
	L502	USITT PAR64-MFL	15
	L506	159mm	1
	L506/L119	159mm	1
	L506/L119	159mm	15
	L506/L119	190mm	10
	L763	USITT PAR64-MFL	2
	O/W	190mm	4

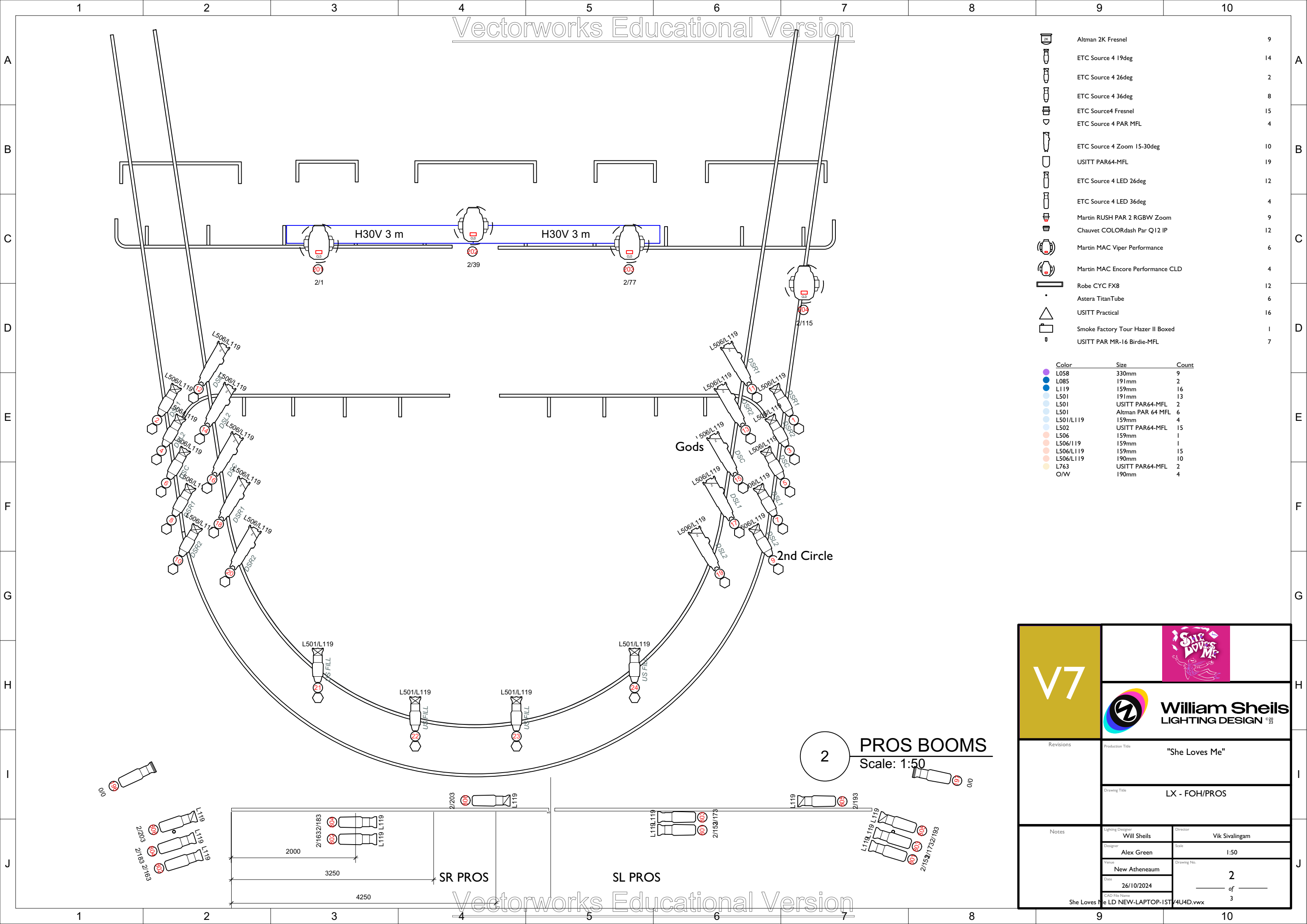


2 SIDELIGHT Scale: 1:50

V7

**William Sheils**  
LIGHTING DESIGN

Revisions	Production Title <b>"She Loves Me"</b>	
	Drawing Title <b>LX - OVERHEAD PLAN</b>	
Notes	Lighting Designer <b>Will Sheils</b>	Director <b>Vik Sivalingam</b>
	Designer <b>Alex Green</b>	Scale <b>1:50</b>
	Venue <b>New Atheneum</b>	Drawing No. <b>1</b>
	Date <b>26/10/2024</b>	of <b>3</b>
CAD File Name <b>She Loves Me LD NEW-LAPTOP-IST/4U4D.vwx</b>		



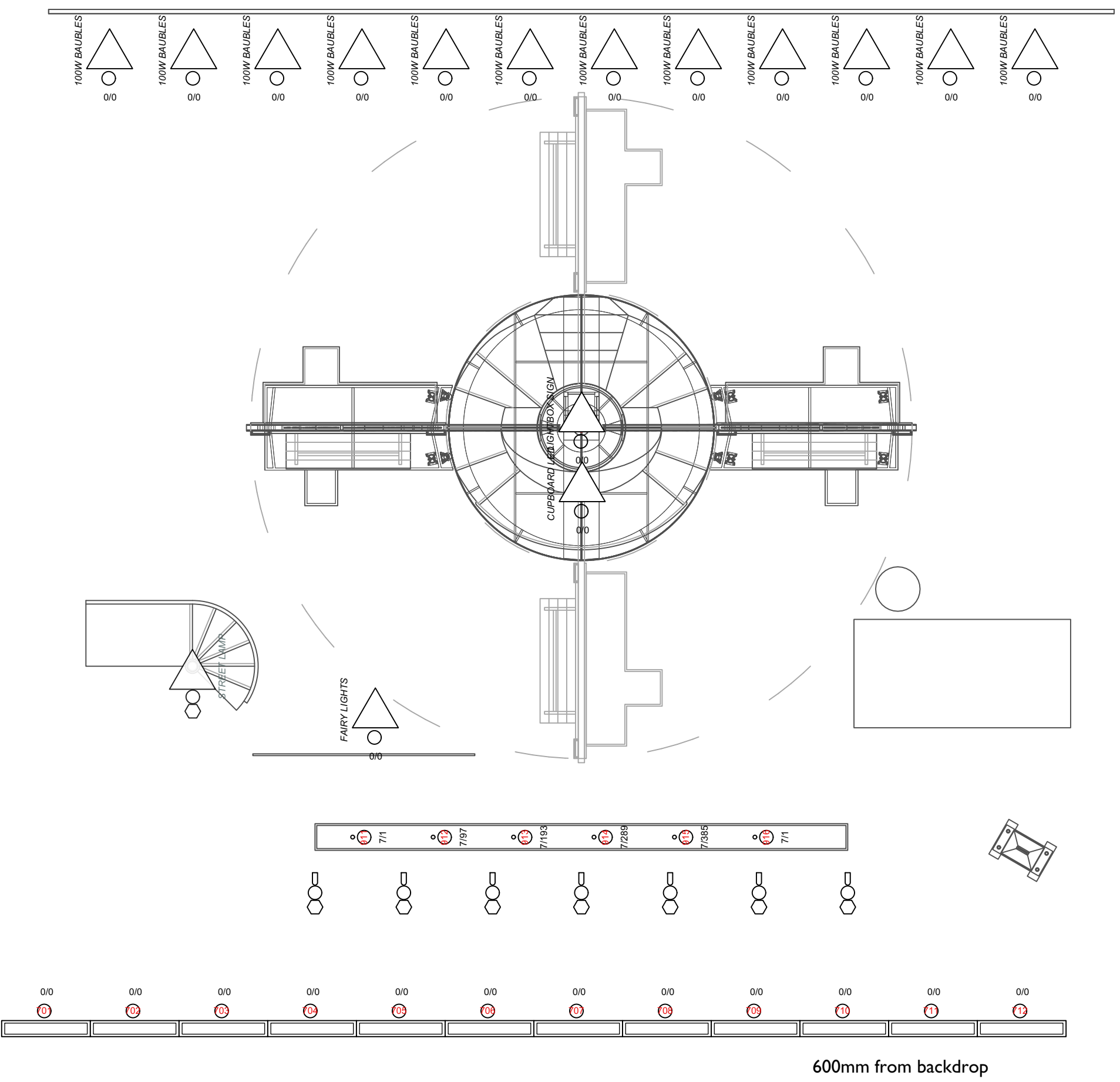
- Altman 2K Fresnel 9
- ETC Source 4 19deg 14
- ETC Source 4 26deg 2
- ETC Source 4 36deg 8
- ETC Source4 Fresnel 15
- ETC Source 4 PAR MFL 4
- ETC Source 4 Zoom 15-30deg 10
- USITT PAR64-MFL 19
- ETC Source 4 LED 26deg 12
- ETC Source 4 LED 36deg 4
- Martin RUSH PAR 2 RGBW Zoom 9
- Chauvet COLORdash Par Q12 IP 12
- Martin MAC Viper Performance 6
- Martin MAC Encore Performance CLD 4
- Robe CYC FX8 12
- Astera TitanTube 6
- USITT Practical 16
- Smoke Factory Tour Hazer II Boxed 1
- USITT PAR MR-16 Birdie-MFL 7

Color	Size	Count
L058	330mm	9
L085	191mm	2
L119	159mm	16
L501	191mm	13
L501	USITT PAR64-MFL	2
L501	Altman PAR 64 MFL	6
L501/L119	159mm	4
L502	USITT PAR64-MFL	15
L506	159mm	1
L506/L119	159mm	1
L506/L119	159mm	15
L506/L119	190mm	10
L763	USITT PAR64-MFL	2
O/W	190mm	4

2 PROS BOOMS  
Scale: 1:50



V7		
Revisions	Production Title <b>"She Loves Me"</b>	
	Drawing Title <b>LX - FOH/PROS</b>	
Notes	Lighting Designer <b>Will Sheils</b>	Director <b>Vik Sivalingam</b>
	Designer <b>Alex Green</b>	Scale <b>1:50</b>
	Venue <b>New Atheneum</b>	Drawing No. <b>2</b>
	Date <b>26/10/2024</b>	<b>of</b> _____
CAD File Name She Loves Me LD NEW-LAPTOP-IST/4U4D.vwx		



	Altman 2K Fresnel	9
	ETC Source 4 19deg	14
	ETC Source 4 26deg	2
	ETC Source 4 36deg	8
	ETC Source4 Fresnel	15
	ETC Source 4 PAR MFL	4
	ETC Source 4 Zoom 15-30deg	10
	USITT PAR64-MFL	19
	ETC Source 4 LED 26deg	12
	ETC Source 4 LED 36deg	4
	Martin RUSH PAR 2 RGBW Zoom	9
	Chauvet COLORdash Par Q12 IP	12
	Martin MAC Viper Performance	6
	Martin MAC Encore Performance CLD	4
	Robe CYC FX8	12
	Asteria TitanTube	6
	USITT Practical	16
	Smoke Factory Tour Hazer II Boxed	1
	USITT PAR MR-16 Birdie-MFL	7

Color	Size	Count
L058	330mm	9
L085	191mm	2
L119	159mm	16
L501	191mm	13
L501	USITT PAR64-MFL	2
L501	Altman PAR 64 MFL	4
L501/L119	159mm	4
L502	USITT PAR64-MFL	15
L506	159mm	1
L506/119	159mm	1
L506/L119	159mm	15
L506/L119	190mm	10
L763	USITT PAR64-MFL	2
O/W	190mm	4

<b>V7</b>	
	<b>William Sheils</b> LIGHTING DESIGN
Revisions	Production Title <b>"She Loves Me"</b>
Notes	Drawing Title <b>LX - SFX/PRACTICALS</b>
	Lighting Designer <b>Will Sheils</b>
	Director <b>Vik Sivalingam</b>
	Designer <b>Alex Green</b>
	Scale <b>1:50</b>
	Venue <b>New Atheneum</b>
	Drawing No. <b>3</b>
	Date <b>26/10/2024</b>
	of <b>3</b>
	CAD File Name <b>She Loves Me LD NEW-LAPTOP-IST/4U4D.vwx</b>