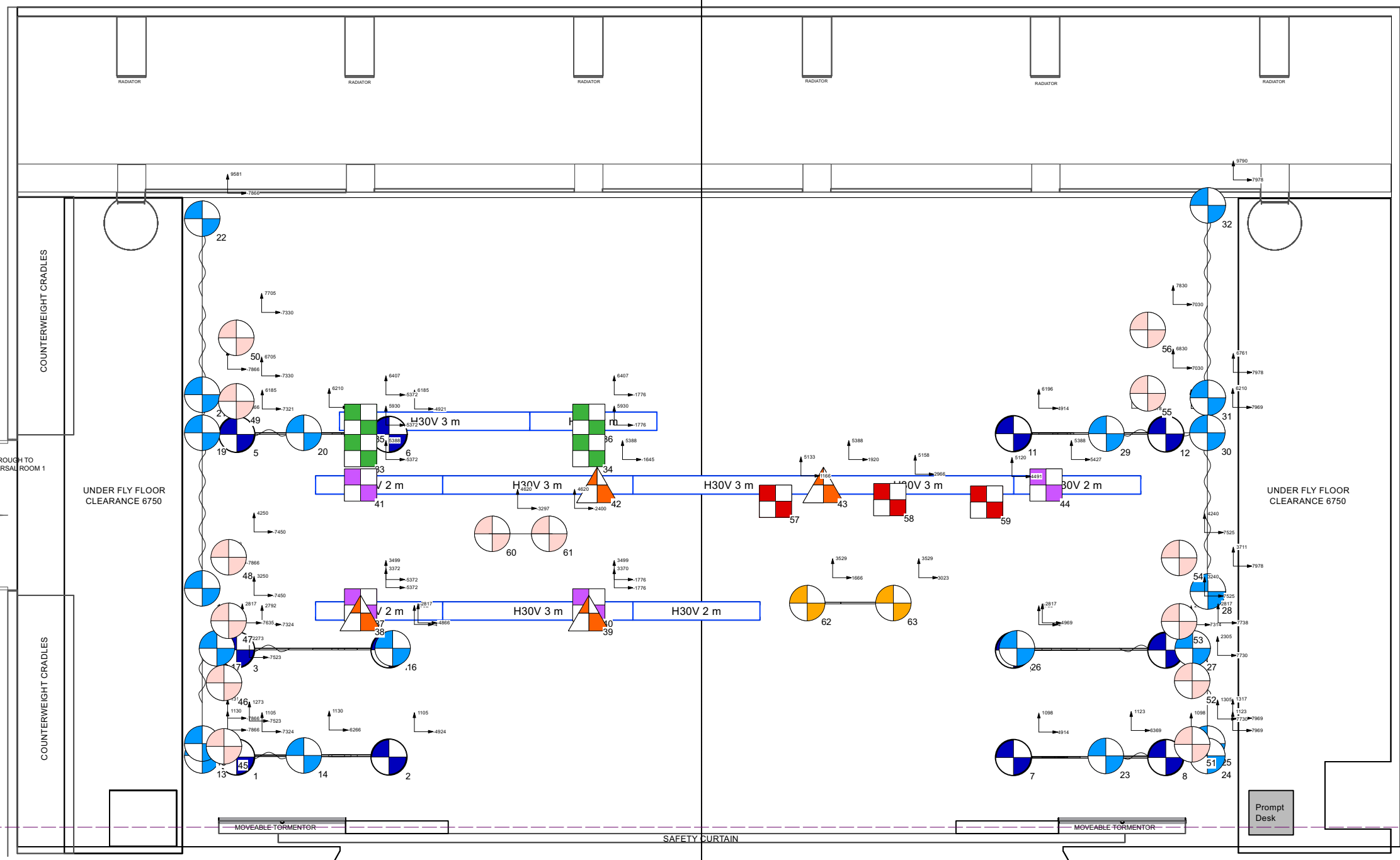


- 30 Back Cloth Legs—
- 29 —Border—
- 28 —
- 27 —
- 26 —
- 25 —
- 24 — LX 9 —
- 23 —
- 22 —
- 21 — LX 8 —
- 20 — LX7 —
- 19 —
- 18 — LX 6 —
- 17 —Border—
- DP16 — Brick Wall —
- Top Half Pie Shop - Auto
- DP15 —
- LX 5 (Truss)
- Joanas Tower - Auto
- DP14 —
- Pendant Light
- DP13 —Border—
- DP12 —Windows—
- Judges Portrate - Hemp
- LX 4 (Truss)
- Chandelier
- 11 —
- 10 Exterior Pie Shop
- 9 —Border—
- 8 Fleet Street sign—
- 7 — LX 3 —
- 6 —
- 5 — LX 2 —
- 4 —
- 3 House Tabs —
- 2 —
- 1 — LX 1 —
- W —Border—



To Rear Scene Dock

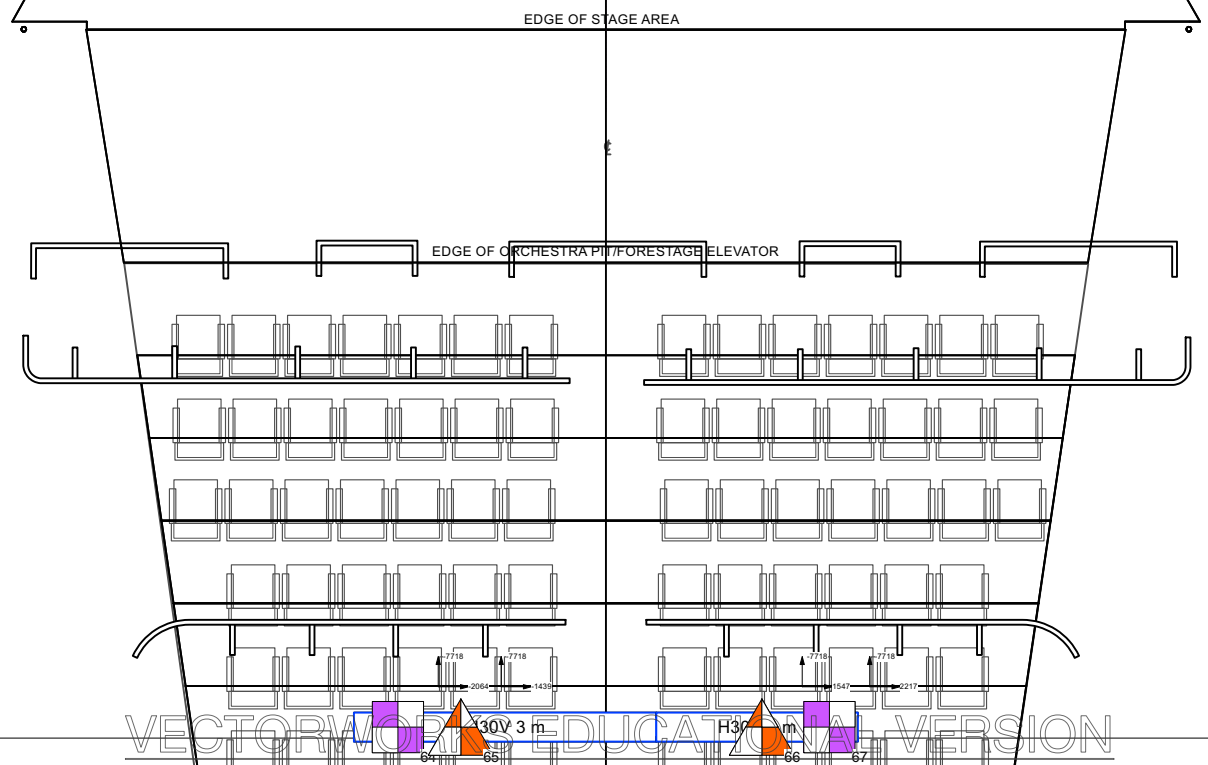
SCENE DOCK /GET IN
Door Clearance 2250w X 6300h

THROUGH TO
PROPS ROOM/KITCHEN

SETTING LINE 800mm from front of permanent stage



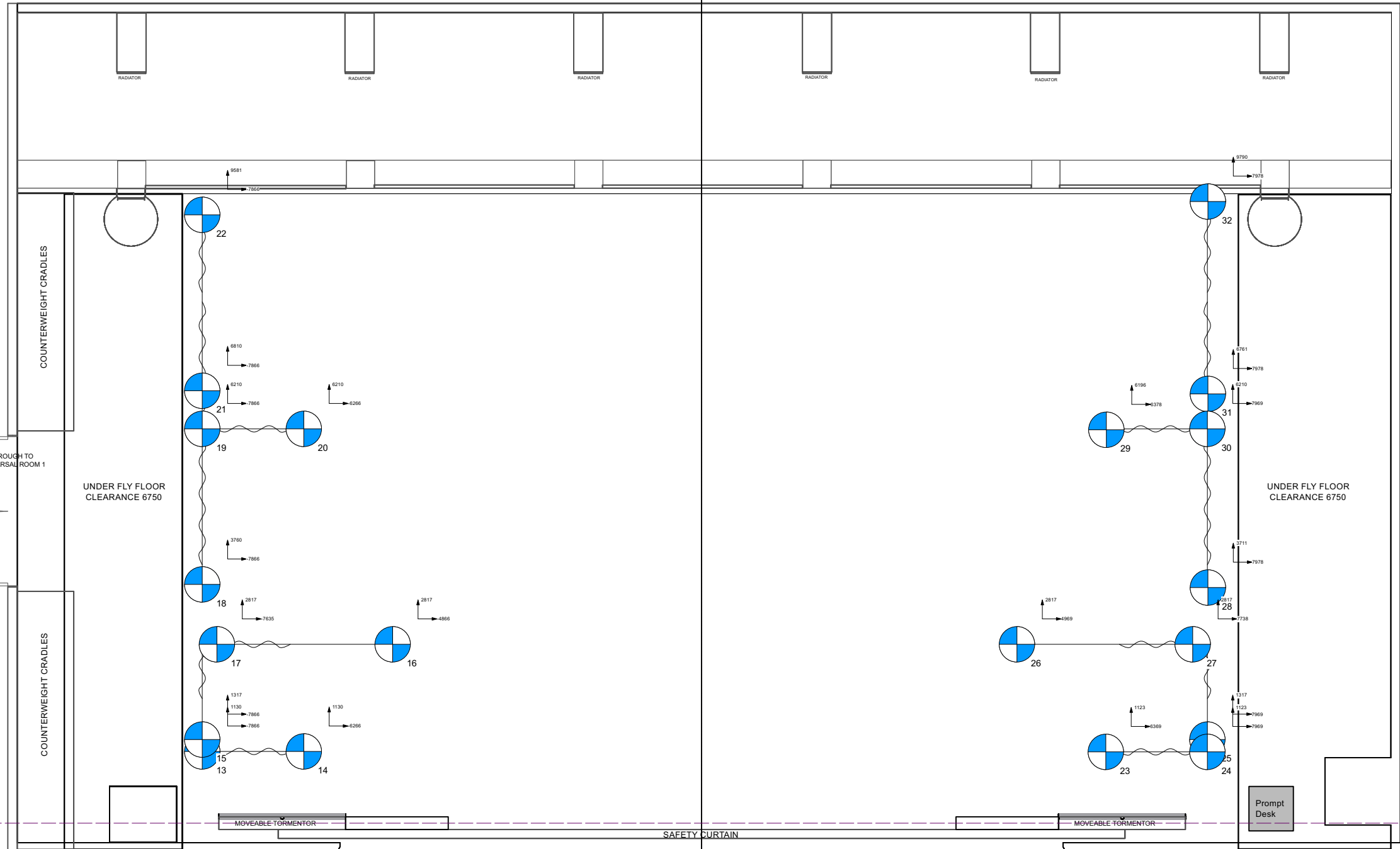
TECHNICAL DATA	
Proscenium Opening	8 000mm - 11 200mm (w) x 7 180mm (h)
Setting Line to D/S of Rear Columns	10 000mm
Setting Line To Edge Of Stage	800mm
Setting Line To Edge of Forestage/Pit Elevator	3110mm
Depth of Forestage/Pit Elevator	2 310mm
Height of Stage from Stalls Level	910mm
Max Width of Stage	20 75 0mm
Width Between Fly Floors	16 550mm
Clearance To Underside of Fly Floors	6700mm
Height to Underside of Grid (Bar Travel)	15 500mm
Bar Width Counter Weights	11 500mm SWL 400kg UDL / 45kg PL
Bar Width DP Counter Weights	12 000mm SWL 370kg UDL / 50kg PL
Bar Width Hemp Sets	10 650mm SWL 50kg UDL
Get In Clearance Dimensions	
Stage Left	2 250 (w) x 6 300 (h)
Stage Right	2 350 (w) x 2 800 (h)



Updates
 14/8/18 Dimmer Info Formatting Fixed
 22/10/20 replaced CW and FOH bar symbol architecture with lighting pipes
 18/02/21 moved some DP and CW bars to correct y-position added missing catwalk 2 right rail back in
 30/04/21 converted Gods rail and FOH catwalk rails to lighting pipes
 Steve MacLuskie 0141 270 8257
 Simon Cook 0141 270 8108

Title Sweeney Todd Points Plan		
Drawing Number 1	Drawn By Kyle Jessimar	Date 22/04/2022
CAD File Name 1:75 @A3		

- 30 Back Cloth Legs—
- 29 —Border—
- 28 —
- 27 —
- 26 —
- 25 —
- 24 —LX 9—
- 23 —
- 22 —
- 21 —LX 8—
- 20 —LX7—
- 19 —
- 18 —LX 6—
- Barber Back Wall - Auto
- 17 —Border—
- DP16 —Brick Wall—
- Top Half Pie Shop - Auto
- DP15 —
- LX 5 (Truss)
- Joanas Tower - Auto
- DP14 —
- Pendant Light
- DP13 —Border—
- DP12 —Windows—
- Judges Portrate - Hemp
- LX 4 (Truss)
- 11 —Chandelier—
- 10 —Exterior Pie Shop
- 9 —Border—
- 8 —Fleet Street sign—
- 7 —LX 3—
- 6 —
- 5 —LX 2—
- 4 —
- 3 —House Tabs—
- 2 —
- 1 —LX 1—
- W —Border—



To Rear Scene Dock

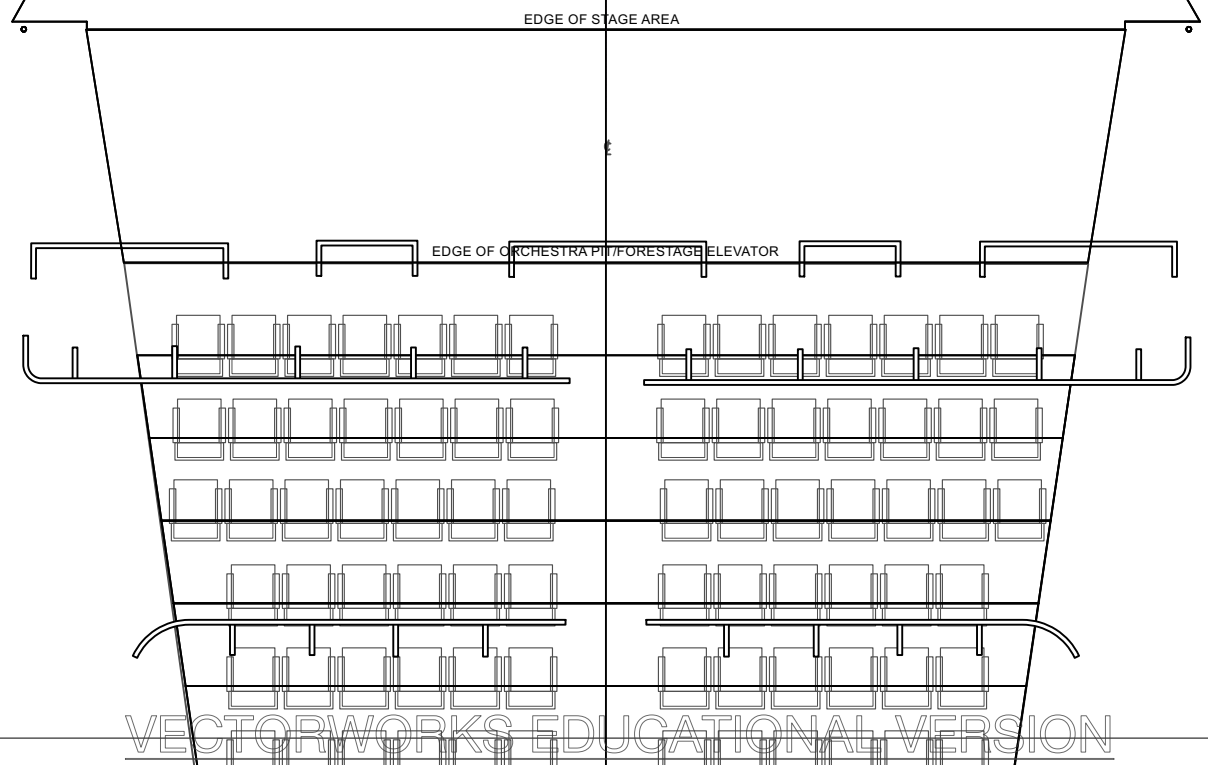
SCENE DOCK /GET IN
Door Clearance 2250w X 6300h

THROUGH TO
PROPS ROOM/KITCHEN

SETTING LINE 800mm from front of permanent stage



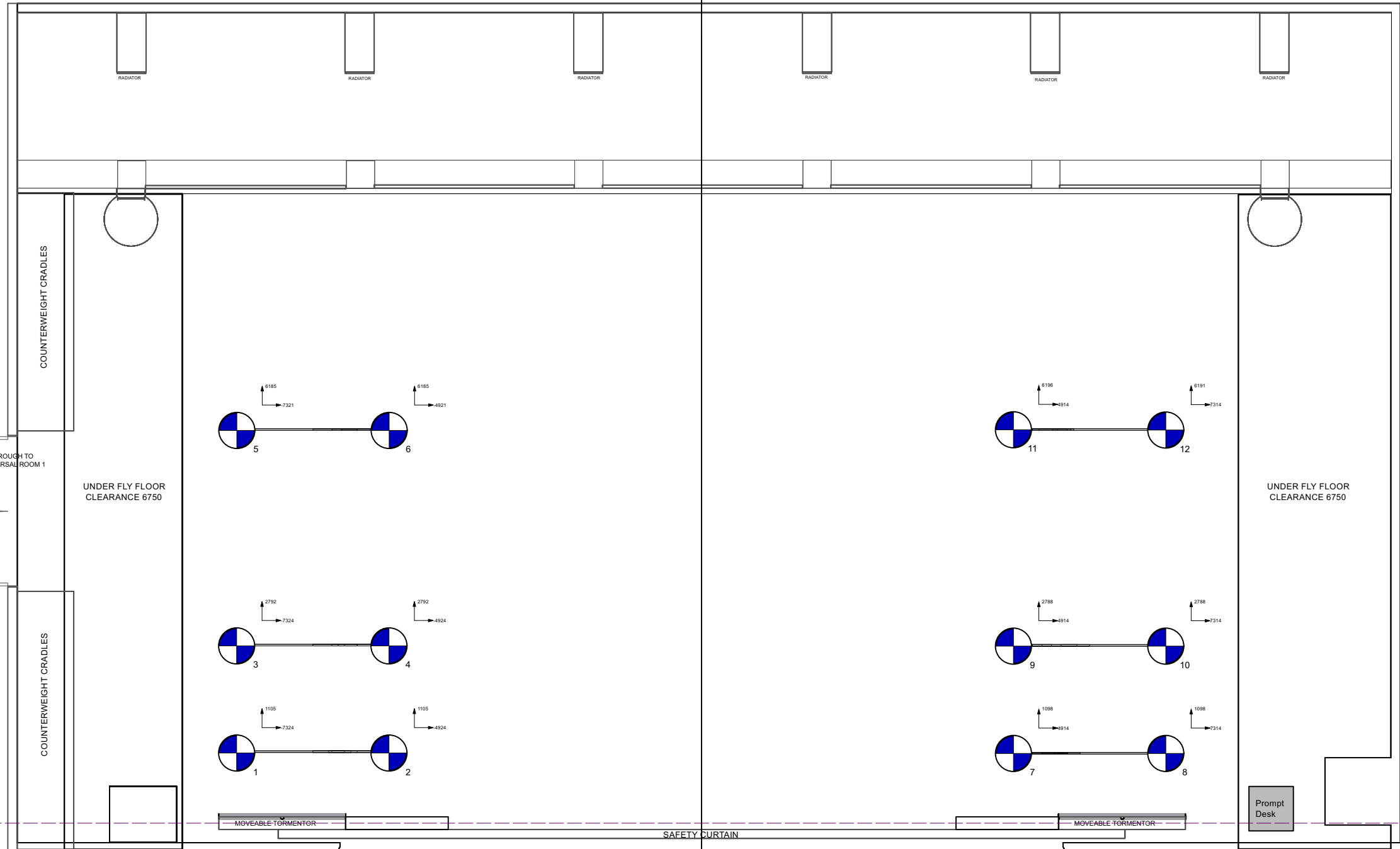
TECHNICAL DATA	
Proscenium Opening	8 000mm - 11 200mm (w) x 7 180mm (h)
Setting Line to D/S of Rear Columns	10 000mm
Setting Line To Edge Of Stage	800mm
Setting Line To Edge of Forestage/Pit Elevator	3110mm
Depth of Forestage/Pit Elevator	2 310mm
Height of Stage from Stalls Level	910mm
Max Width of Stage	20 75 0mm
Width Between Fly Floors	16 550mm
Clearance To Underside of Fly Floors	6700mm
Height to Underside of Grid (Bar Travel)	15 500mm
Bar Width Counter Weights	11 500mm SWL 400kg UDL / 45kg PL
Bar Width DP Counter Weights	12 000mm SWL 370kg UDL / 50kg PL
Bar Width Hemp Sets	10 650mm SWL 50kg UDL
Get In Clearance Dimensions	
Stage Left	2 250 (w) x 6 300 (h)
Stage Right	2 350 (w) x 2 800 (h)



Updates
 14/8/18 Dimmer Info Formatting Fixed
 22/10/20 replaced CW and FOH bar symbol architecture with lighting pipes
 18/02/21 moved some DP and CW bars to correct y-position added missing catwalk 2 right rail back in
 30/04/21 converted Gods rail and FOH catwalk rails to lighting pipes
 Steve MacIuskie 0141 270 8257
 Simon Cook 0141 270 8108

Title Sweeney Todd Points Plan - Legs		
Drawing Number 1	Drawn By Kyle Jessimar	Date 22/04/2022
CAD File Name 1:75 @A3		

- 30 Back Cloth Legs—
- 29 —Border—
- 28 —
- 27 —
- 26 —
- 25 —
- 24 —LX 9—
- 23 —
- 22 —
- 21 —LX 8—
- 20 —LX7—
- 19 —
- 18 —LX 6—
- Barber Back Wall - Auto
- 17 —Border—
- DP16 —Brick Wall—
- Top Half Pie Shop - Auto
- DP15 —
- LX 5 (Truss)
- Joanas Tower - Auto
- DP14 —
- Pendant Light
- DP13 —Border—
- DP12 —Windows—
- Judges Portrate - Hemp
- LX 4 (Truss)
- Chandelier
- 11 —
- 10 Exterior Pie Shop
- 9 —Border—
- 8 Fleet Street sign—
- 7 —LX 3—
- 6 —
- 5 —LX 2—
- 4 —
- 3 House Tabs—
- 2 —
- 1 —LX 1—
- W —Border—

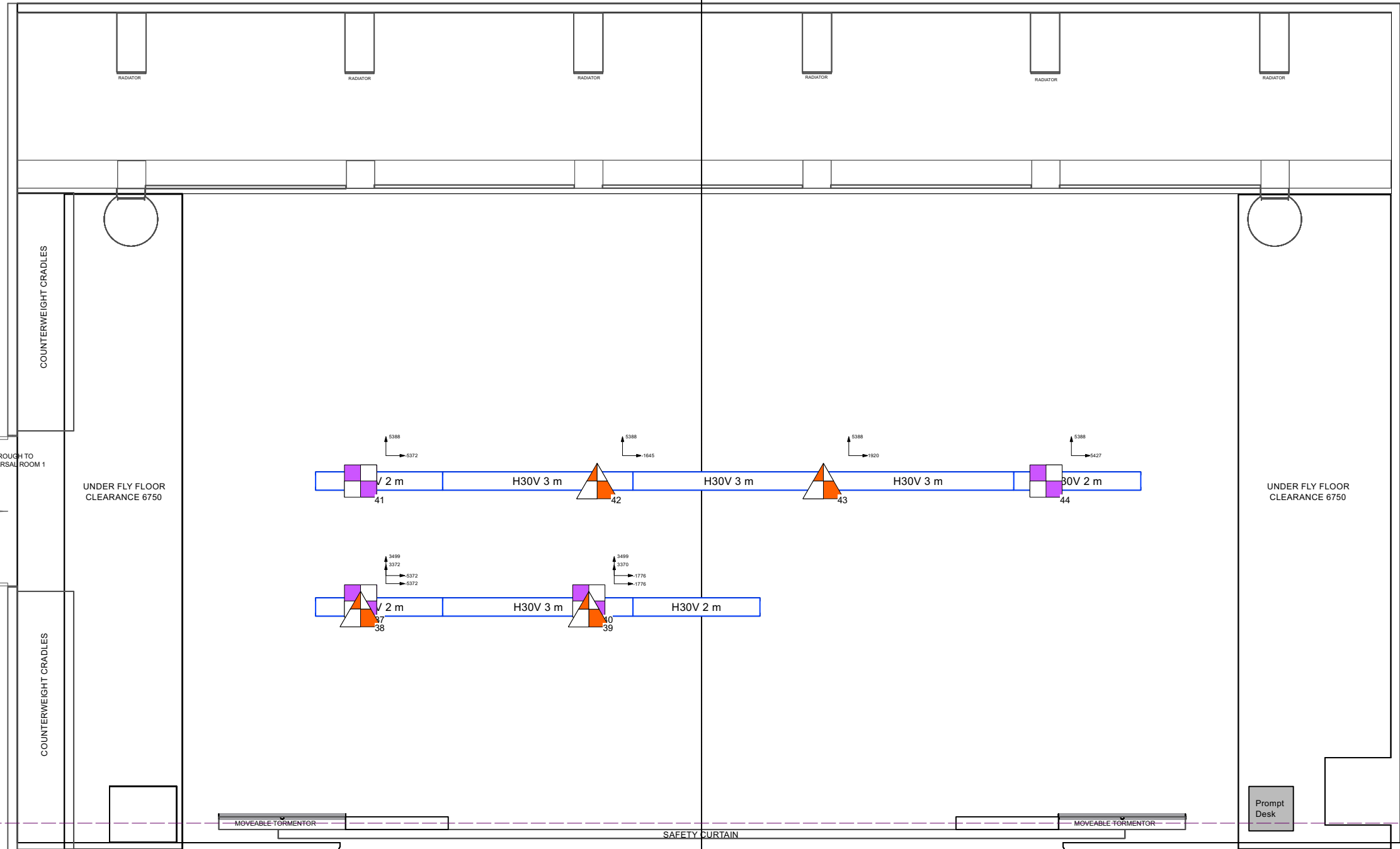


TECHNICAL DATA	
Proscenium Opening	8 000mm - 11 200mm (w) x 7 180mm (h)
Setting Line to D/S of Rear Columns	10 000mm
Setting Line To Edge Of Stage	800mm
Setting Line To Edge of Forestage/Pit Elevator	3110mm
Depth of Forestage/Pit Elevator	2 310mm
Height of Stage from Stalls Level	910mm
Max Width of Stage	20 75 0mm
Width Between Fly Floors	16 550mm
Clearance To Underside of Fly Floors	6700mm
Height to Underside of Grid (Bar Travel)	15 500mm
Bar Width Counter Weights	11 500mm SWL 400kg UDL / 45kg PL
Bar Width DP Counter Weights	12 000mm SWL 370kg UDL / 50kg PL
Bar Width Hemp Sets	10 650mm SWL 50kg UDL
Get In Clearance Dimensions	
Stage Left	2 250 (w) x 6 300 (h)
Stage Right	2 350 (w) x 2 800 (h)

Updates
 14/8/18 Dimmer Info Formatting Fixed
 22/10/20 replaced CW and FOH bar symbol architecture with lighting pipes
 18/02/21 moved some DP and CW bars to correct y-position added missing catwalk 2 right rail back in
 30/04/21 converted Gods rail and FOH catwalk rails to lighting pipes
 Steve MacIuskie 0141 270 8257
 Simon Cook 0141 270 8108

Title Sweeney Todd Points Plan - Printed Masking		
Drawing Number 1	Drawn By Kyle Jessimar	Date 22/04/2022
CAD File Name 1:75 @A3		

- 30 Back Cloth Legs—
- 29 —Border—
- 28 —
- 27 —
- 26 —
- 25 —
- 24 —LX 9—
- 23 —
- 22 —
- 21 —LX 8—
- 20 —LX7—
- 19 —
- 18 —LX 6—
- Barber Back Wall - Auto
- 17 —Border—
- DP16 —Brick Wall—
- Top Half Pie Shop - Auto
- DP15 —
- LX 5 (Truss)
- Joanas Tower - Auto
- DP14 —
- Pendant Light
- DP13 —Border—
- DP12 —Windows—
- Judges Portrate - Hemp
- LX 4 (Truss)
- 11 —Chandelier—
- 10 —Exterior Pie Shop
- 9 —Border—
- 8 —Fleet Street sign—
- 7 —LX 3—
- 6 —
- 5 —LX 2—
- 4 —
- 3 —House Tabs—
- 2 —
- 1 —LX 1—
- W —Border—

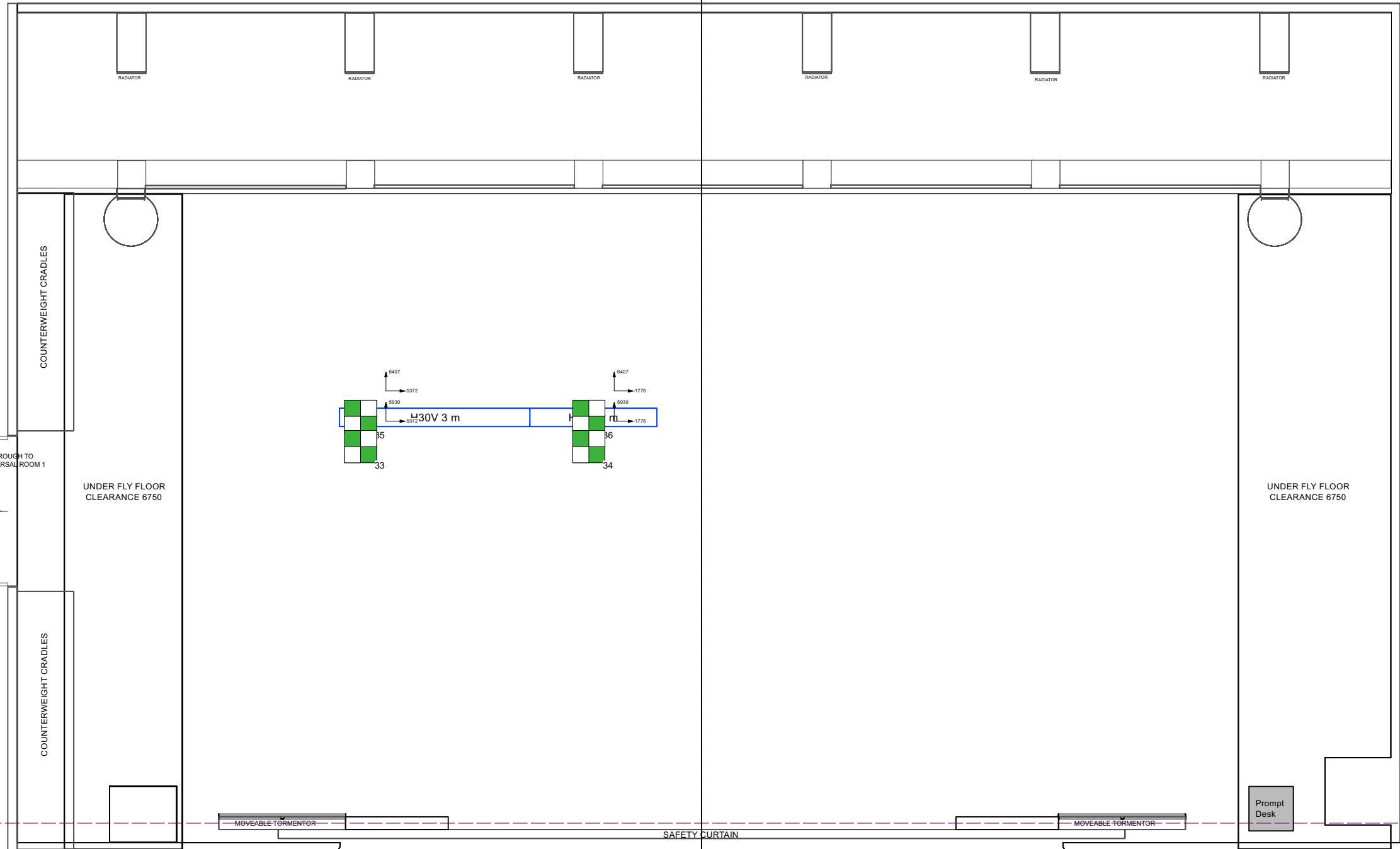


TECHNICAL DATA	
Proscenium Opening	8 000mm - 11 200mm (w) x 7 180mm (h)
Setting Line to D/S of Rear Columns	10 000mm
Setting Line To Edge Of Stage	800mm
Setting Line To Edge of Forestage/Pit Elevator	3110mm
Depth of Forestage/Pit Elevator	2 310mm
Height of Stage from Stalls Level	910mm
Max Width of Stage	20 75 0mm
Width Between Fly Floors	16 550mm
Clearance To Underside of Fly Floors	6700mm
Height to Underside of Grid (Bar Travel)	15 500mm
Bar Width Counter Weights	11 500mm SWL 400kg UDL / 45kg PL
Bar Width DP Counter Weights	12 000mm SWL 370kg UDL / 50kg PL
Bar Width Hemp Sets	10 650mm SWL 50kg UDL
Get In Clearance Dimensions	
Stage Left	2 250 (w) x 6 300 (h)
Stage Right	2 350 (w) x 2 800 (h)

Updates
 14/8/18 Dimmer Info Formatting Fixed
 22/10/20 replaced CW and FOH bar symbol architecture with lighting pipes
 18/02/21 moved some DP and CW bars to correct y-position added missing catwalk 2 right rail back in
 30/04/21 converted Gods rail and FOH catwalk rails to lighting pipes
 Steve MacIuskie 0141 270 8257
 Simon Cook 0141 270 8108

Title Sweeney Todd Points Plan - LX Truss		
Drawing Number 1	Drawn By Kyle Jessimar	Date 22/04/2022
CAD File Name 1:75 @A3		

- 30 Back Cloth Legs—
- 29 —Border—
- 28 —
- 27 —
- 26 —
- 25 —
- 24 —LX 9—
- 23 —
- 22 —
- 21 —LX 8—
- 20 —LX7—
- 19 —
- 18 —LX 6—
- Barber Back Wall - Auto
- 17 —Border—
- DP16 —Brick Wall—
- Top Half Pie Shop - Auto
- DP15 —
- LX 5 (Truss)
- Joanas Tower - Auto
- DP14 —
- Pendant Light
- DP13 —Border—
- DP12 —Windows—
- Judges Portrate - Hemp
- LX 4 (Truss)
- Chandelier
- 11 —
- 10 -Exterior Pie Shop
- 9 —Border—
- 8 -Fleet Street sign—
- 7 —LX 3—
- 6 —
- 5 —LX 2—
- 4 —
- 3 -House Tabs—
- 2 —
- 1 —LX 1—
- W —Border—

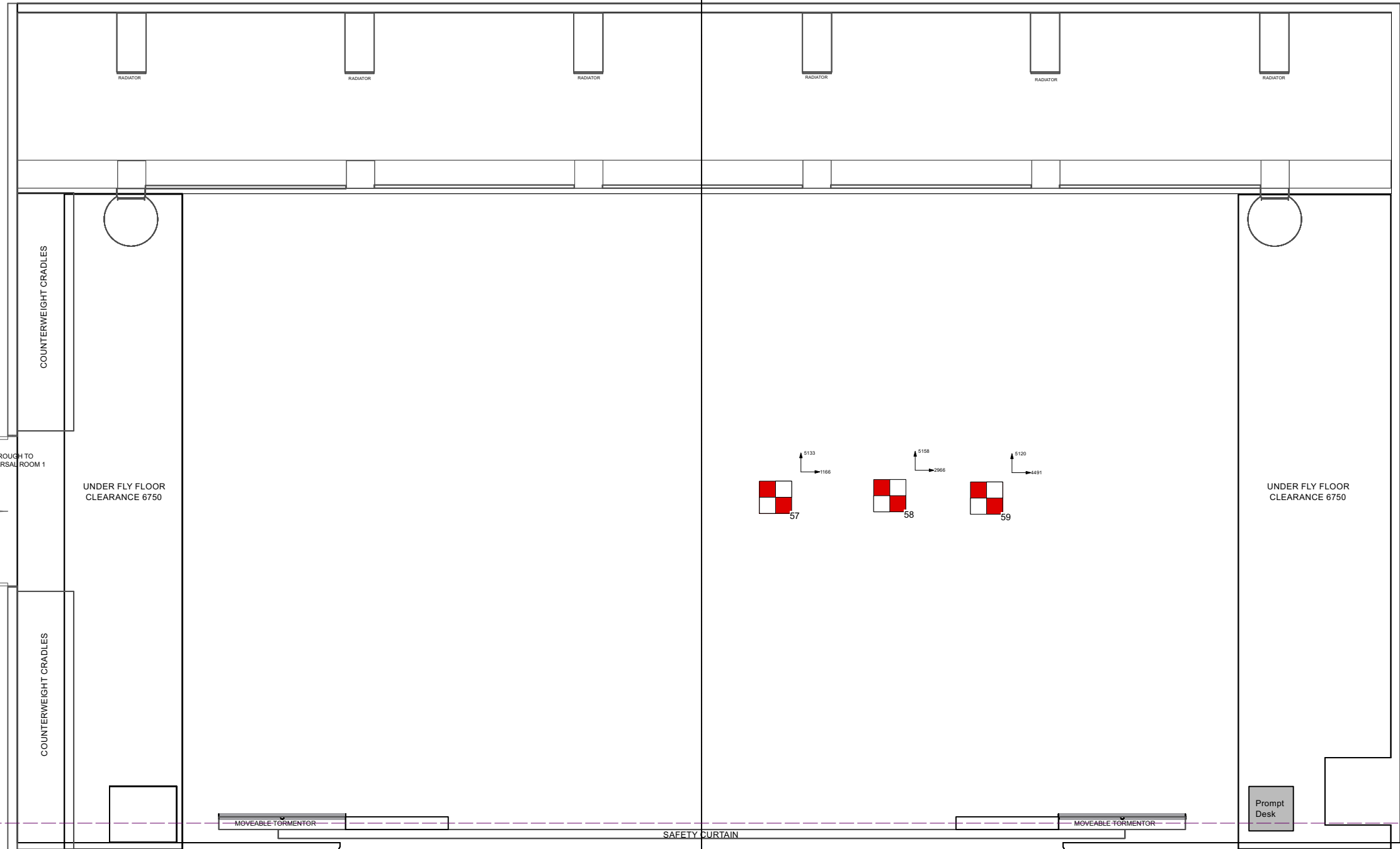


TECHNICAL DATA	
Proscenium Opening	8 000mm - 11 200mm (w) x 7 180mm (h)
Setting Line to D/S of Rear Columns	10 000mm
Setting Line To Edge Of Stage	800mm
Setting Line To Edge of Forestage/Pit Elevator	3110mm
Depth of Forestage/Pit Elevator	2 310mm
Height of Stage from Stalls Level	910mm
Max Width of Stage	20 75 0mm
Width Between Fly Floors	16 550mm
Clearance To Underside of Fly Floors	6700mm
Height to Underside of Grid (Bar Travel)	15 500mm
Bar Width Counter Weights	11 500mm SWL 400kg UDL / 45kg PL
Bar Width DP Counter Weights	12 000mm SWL 370kg UDL / 50kg PL
Bar Width Hemp Sets	10 650mm SWL 50kg UDL
Get In Clearance Dimensions	
Stage Left	2 250 (w) x 6 300 (h)
Stage Right	2 350 (w) x 2 800 (h)

Updates
 14/8/18 Dimmer Info Formatting Fixed
 22/10/20 replaced CW and FOH bar symbol architecture with lighting pipes
 18/02/21 moved some DP and CW bars to correct y-position added missing catwalk 2 right rail back in
 30/04/21 converted Gods rail and FOH catwalk rails to lighting pipes
 Steve MacLuskie 0141 270 8257
 Simon Cook 0141 270 8108

Title Sweeney Todd Points Plan - Kinesys		
Drawing Number 1	Drawn By Kyle Jessimar	Date 22/04/2022
CAD File Name 1:75 @A3		

- 30 Back Cloth Legs—
- 29 —Border—
- 28 —
- 27 —
- 26 —
- 25 —
- 24 —LX 9—
- 23 —
- 22 —
- 21 —LX 8—
- 20 —LX7—
- 19 —
- 18 —LX 6—
- Barber Back Wall - Auto
- 17 —Border—
- DP16 —Brick Wall—
- Top Half Pie Shop - Auto
- DP15 —
- LX 5 (Truss)
- Joanas Tower - Auto
- DP14 —
- Pendant Light
- DP13 —Border—
- DP12 —Windows—
- Judges Portrate - Hemp
- LX 4 (Truss)
- Chandelier
- 11 —
- 10 -Exterior Pie Shop
- 9 —Border—
- 8 -Fleet Street sign—
- 7 —LX 3—
- 6 —
- 5 —LX 2—
- 4 —
- 3 -House Tabs—
- 2 —
- 1 —LX 1—
- W —Border—



To Rear Scene Dock

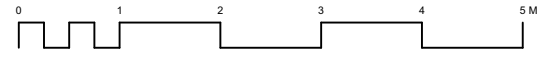
SCENE DOCK /GET IN
Door Clearance 2250w X 6300h

THROUGH TO
PROPS ROOM/KITCHEN

SETTING LINE 800mm from front of permanent stage

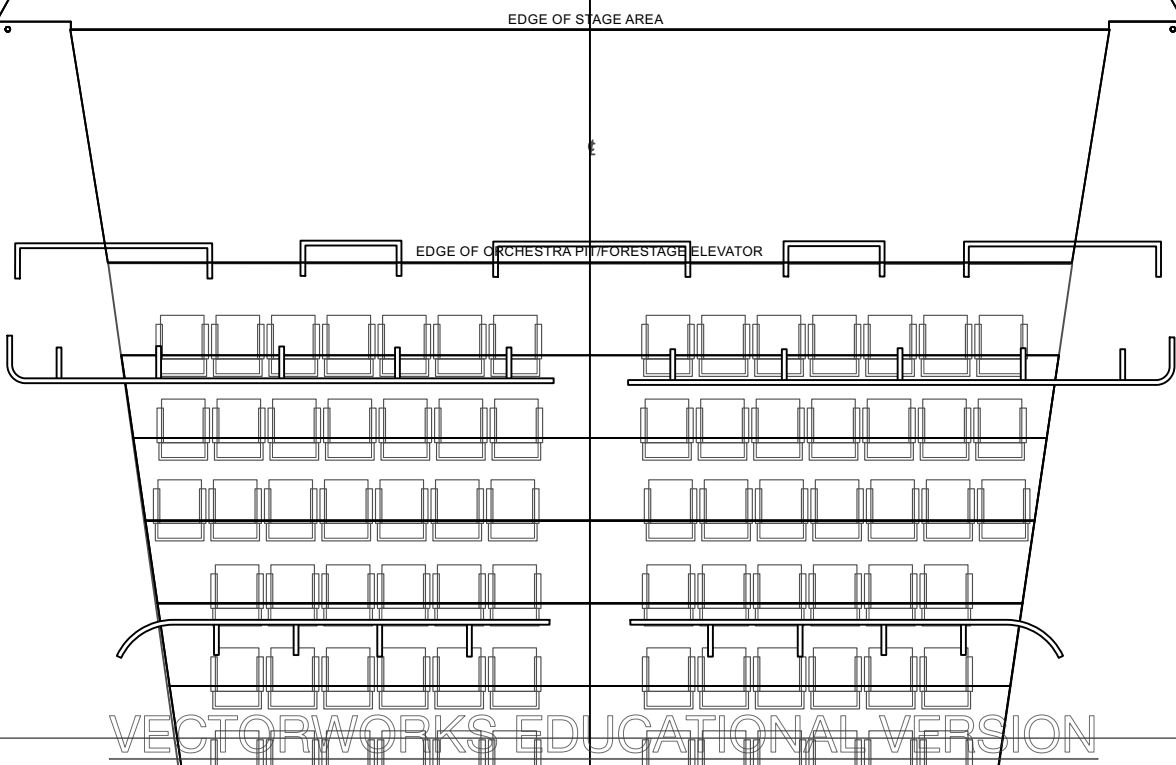
To Lower Foyer

Through to Dressing Room Corridor



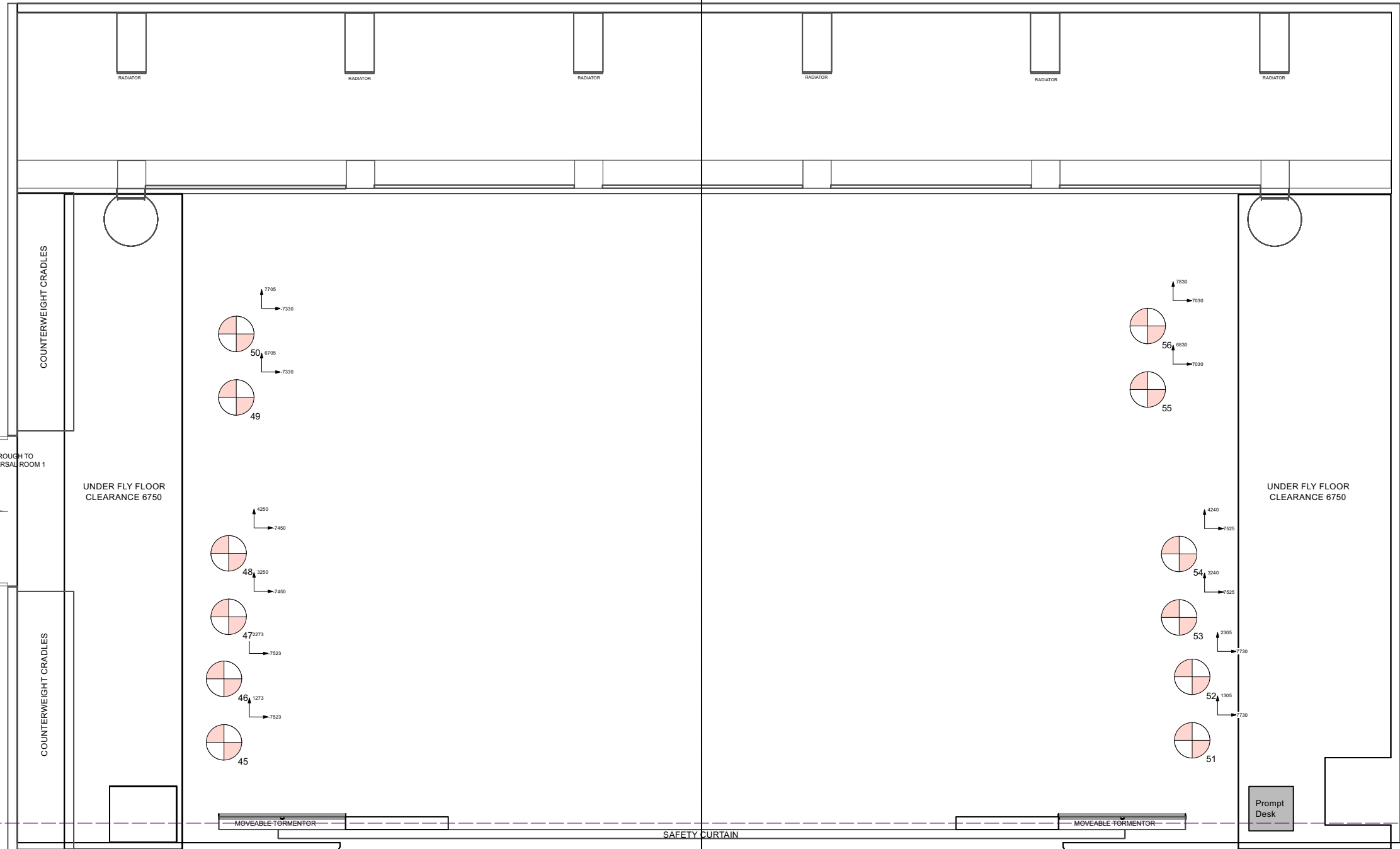
TECHNICAL DATA	
Proscenium Opening	8 000mm - 11 200mm (w) x 7 180mm (h)
Setting Line to D/S of Rear Columns	10 000mm
Setting Line To Edge Of Stage	800mm
Setting Line To Edge of Forestage/Pit Elevator	3110mm
Depth of Forestage/Pit Elevator	2 310mm
Height of Stage from Stalls Level	910mm
Max Width of Stage	20 75 0mm
Width Between Fly Floors	16 550mm
Clearance To Underside of Fly Floors	6700mm
Height to Underside of Grid (Bar Travel)	15 500mm
Bar Width Counter Weights	11 500mm SWL 400kg UDL / 45kg PL
Bar Width DP Counter Weights	12 000mm SWL 370kg UDL / 50kg PL
Bar Width Hemp Sets	10 650mm SWL 50kg UDL
Get In Clearance Dimensions	
Stage Left	2 250 (w) x 6 300 (h)
Stage Right	2 350 (w) x 2 800 (h)

Updates
 14/8/18 Dimmer Info Formatting Fixed
 22/10/20 replaced CW and FOH bar symbol architecture with lighting pipes
 18/02/21 moved some DP and CW bars to correct y-position added missing catwalk 2 right rail back in
 30/04/21 converted Gods rail and FOH catwalk rails to lighting pipes
 Steve MacLuskie 0141 270 8257
 Simon Cook 0141 270 8108



Title		
Sweeney Todd Points Plan - Johanna's Flat		
Drawing Number	Drawn By	Date
1	Kyle Jessimar	22/04/2022
CAD File Name		
1:75 @A3		

- 30 Back Cloth Legs—
- 29 —Border—
- 28 —
- 27 —
- 26 —
- 25 —
- 24 —LX 9—
- 23 —
- 22 —
- 21 —LX 8—
- 20 —LX7—
- 19 —
- 18 —LX 6—
- Barber Back Wall - Auto
- 17 —Border—
- DP16 —Brick Wall—
- Top Half Pie Shop - Auto
- DP15 —
- LX 5 (Truss)
- Joanas Tower - Auto
- DP14 —
- Pendant Light
- DP13 —Border—
- DP12 —Windows—
- Judges Portrate - Hemp
- LX 4 (Truss)
- 11 —Chandelier—
- 10 —Exterior Pie Shop
- 9 —Border—
- 8 —Fleet Street sign—
- 7 —LX 3—
- 6 —
- 5 —LX 2—
- 4 —
- 3 —House Tabs—
- 2 —
- 1 —LX 1—
- W —Border—



TECHNICAL DATA

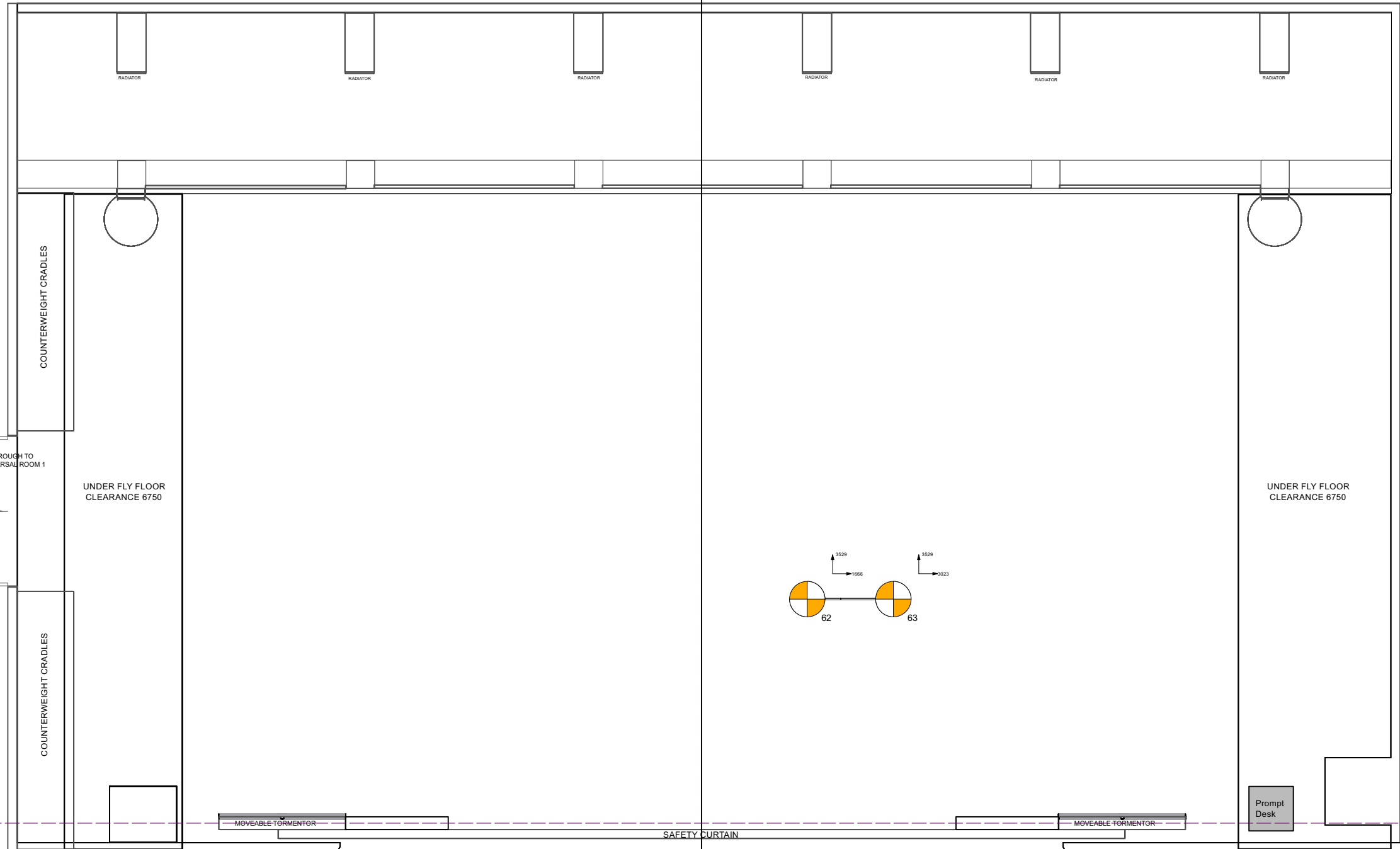
Proscenium Opening	8 000mm - 11 200mm (w) x 7 180mm (h)
Setting Line to D/S of Rear Columns	10 000mm
Setting Line To Edge Of Stage	800mm
Setting Line To Edge of Forestage/Pit Elevator	3110mm
Depth of Forestage/Pit Elevator	2 310mm
Height of Stage from Stalls Level	910mm
Max Width of Stage	20 75 0mm
Width Between Fly Floors	16 550mm
Clearance To Underside of Fly Floors	6700mm
Height to Underside of Grid (Bar Travel)	15 500mm
Bar Width Counter Weights	11 500mm SWL 400kg UDL / 45kg PL
Bar Width DP Counter Weights	12 000mm SWL 370kg UDL / 50kg PL
Bar Width Hemp Sets	10 650mm SWL 50kg UDL

Get In Clearance Dimensions	Stage Left	2 250 (w) x 6 300 (h)
	Stage Right	2 350 (w) x 2 800 (h)

Updates
 14/8/18 Dimmer Info Formatting Fixed
 22/10/20 replaced CW and FOH bar symbol architecture with lighting pipes
 18/02/21 moved some DP and CW bars to correct y-position added missing catwalk 2 right rail back in
 30/04/21 converted Gods rail and FOH catwalk rails to lighting pipes
 Steve MacLuskie 0141 270 8257
 Simon Cook 0141 270 8108

Title		
Sweeney Todd Points Plan - LX Ladders		
Drawing Number	Drawn By	Date
1	Kyle Jessimar	22/04/2022
CAD File Name		
1:75 @A3		

- 30 Back Cloth Legs—
- 29 —Border—
- 28 —
- 27 —
- 26 —
- 25 —
- 24 —LX 9—
- 23 —
- 22 —
- 21 —LX 8—
- 20 —LX7—
- 19 —
- 18 —LX 6—
- Barber Back Wall - Auto
- 17 —Border—
- DP16 —Brick Wall—
- Top Half Pie Shop - Auto
- DP15 —
- LX 5 (Truss)
- Joanas Tower - Auto
- DP14 —
- Pendant Light
- DP13 —Border—
- DP12 —Windows—
- Judges Portrate - Hemp
- LX 4 (Truss)
- Chandelier
- 11 —
- 10 -Exterior Pie Shop
- 9 —Border—
- 8 -Fleet Street sign—
- 7 —LX 3—
- 6 —
- 5 —LX 2—
- 4 —
- 3 -House Tabs—
- 2 —
- 1 —LX 1—
- W —Border—



To Rear Scene Dock

SCENE DOCK /GET IN
Door Clearance 2250w X 6300h

THROUGH TO
PROPS ROOM/KITCHEN

SETTING LINE 800mm from front of permanent stage

To Lower Foyer

Through to Dressing Room Corridor

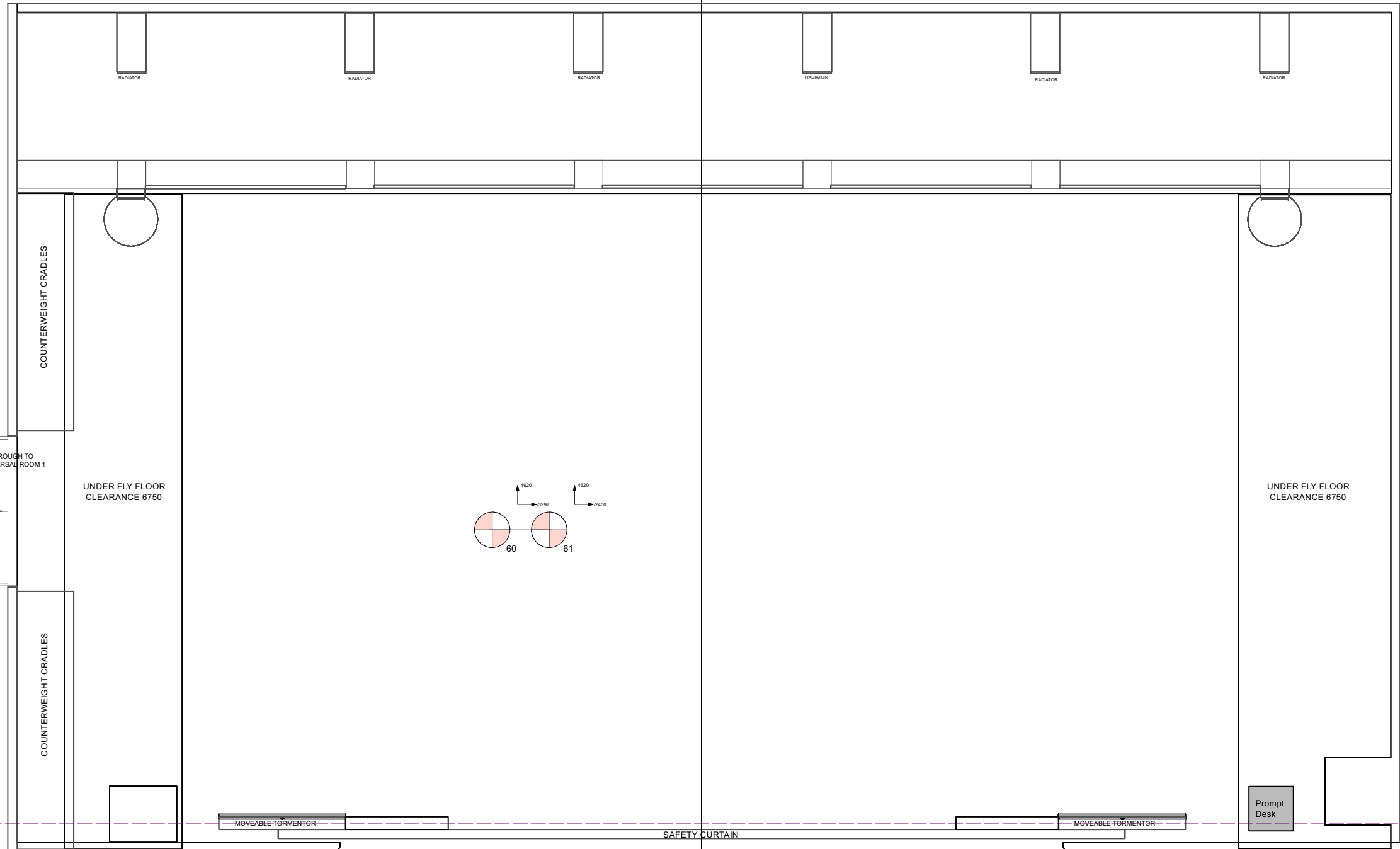


TECHNICAL DATA	
Proscenium Opening	8 000mm - 11 200mm (w) x 7 180mm (h)
Setting Line to D/S of Rear Columns	10 000mm
Setting Line To Edge Of Stage	800mm
Setting Line To Edge of Forestage/Pit Elevator	3110mm
Depth of Forestage/Pit Elevator	2 310mm
Height of Stage from Stalls Level	910mm
Max Width of Stage	20 75 0mm
Width Between Fly Floors	16 550mm
Clearance To Underside of Fly Floors	6700mm
Height to Underside of Grid (Bar Travel)	15 500mm
Bar Width Counter Weights	11 500mm SWL 400kg UDL / 45kg PL
Bar Width DP Counter Weights	12 000mm SWL 370kg UDL / 50kg PL
Bar Width Hemp Sets	10 650mm SWL 50kg UDL
Get In Clearance Dimensions	
Stage Left	2 250 (w) x 6 300 (h)
Stage Right	2 350 (w) x 2 800 (h)

Updates
 14/8/18 Dimmer Info Formatting Fixed
 22/10/20 replaced CW and FOH bar symbol architecture with lighting pipes
 18/02/21 moved some DP and CW bars to correct y-position added missing catwalk 2 right rail back in
 30/04/21 converted Gods rail and FOH catwalk rails to lighting pipes
 Steve MacIuskie 0141 270 8257
 Simon Cook 0141 270 8108

Title Sweeney Todd Points Plan - Judge Portrait		
Drawing Number 1	Drawn By Kyle Jessimar	Date 22/04/2022
CAD File Name 1:75 @A3		

- 30 Back Cloth Legs—
- 29 —Border—
- 28 —
- 27 —
- 26 —
- 25 —
- 24 —LX 9—
- 23 —
- 22 —
- 21 —LX 8—
- 20 —LX7—
- 19 —
- 18 —LX 6—
- Barber Back Wall - Auto
- 17 —Border—
- DP16 —Brick Wall—
- Top Half Pie Shop - Auto
- DP15 —
- LX 5 (Truss)
- Joanas Tower - Auto
- DP14 —
- Pendant Light
- DP13 —Border—
- DP12 —Windows—
- Judges Portrate - Hemp
- LX 4 (Truss)
- Chandelier
- 11 —
- 10 -Exterior Pie Shop
- 9 —Border—
- 8 -Fleet Street sign—
- 7 —LX 3—
- 6 —
- 5 —LX 2—
- 4 —
- 3 -House Tabs—
- 2 —
- 1 —LX 1—
- W —Border—



To Rear Scene Dock

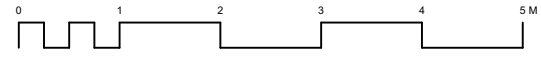
SCENE DOCK /GET IN
Door Clearance 2250w X 6300h

THROUGH TO
PROPS ROOM/KITCHEN

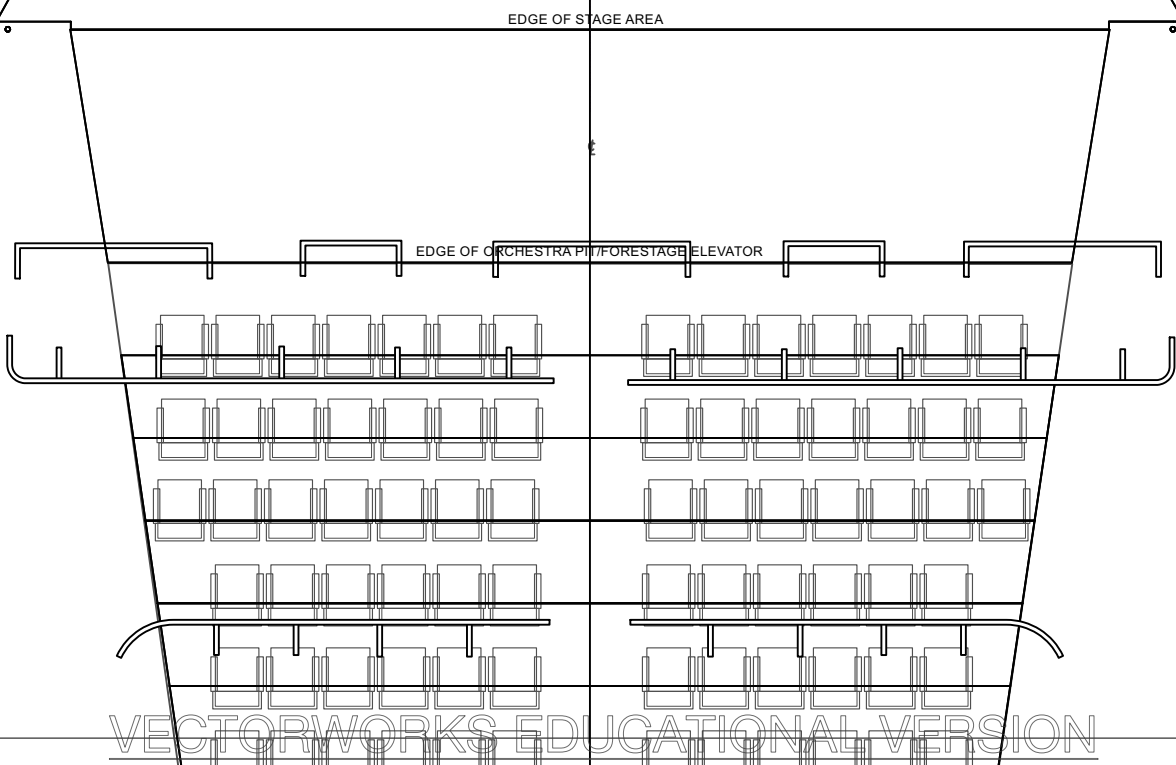
SETTING LINE 800mm from front of permanent stage

To Lower Foyer

Through to Dressing Room Corridor



TECHNICAL DATA	
Proscenium Opening	8 000mm - 11 200mm (w) x 7 180mm (h)
Setting Line to D/S of Rear Columns	10 000mm
Setting Line To Edge Of Stage	800mm
Setting Line To Edge of Forestage/Pit Elevator	3110mm
Depth of Forestage/Pit Elevator	2 310mm
Height of Stage from Stalls Level	910mm
Max Width of Stage	20 75 0mm
Width Between Fly Floors	16 550mm
Clearance To Underside of Fly Floors	6700mm
Height to Underside of Grid (Bar Travel)	15 500mm
Bar Width Counter Weights	11 500mm SWL 400kg UDL / 45kg PL
Bar Width DP Counter Weights	12 000mm SWL 370kg UDL / 50kg PL
Bar Width Hemp Sets	10 650mm SWL 50kg UDL
Get In Clearance Dimensions	
Stage Left	2 250 (w) x 6 300 (h)
Stage Right	2 350 (w) x 2 800 (h)



Updates
 14/8/18 Dimmer Info Formatting Fixed
 22/10/20 replaced CW and FOH bar symbol architecture with lighting pipes
 18/02/21 moved some DP and CW bars to correct y-position added missing catwalk 2 right rail back in
 30/04/21 converted Gods rail and FOH catwalk rails to lighting pipes
 Steve MacLuskie 0141 270 8257
 Simon Cook 0141 270 8108

Title		
Sweeney Todd Points Plan - Pendant		
Drawing Number	Drawn By	Date
1	Kyle Jessimar	22/04/2022
CAD File Name		
1:75 @A3		