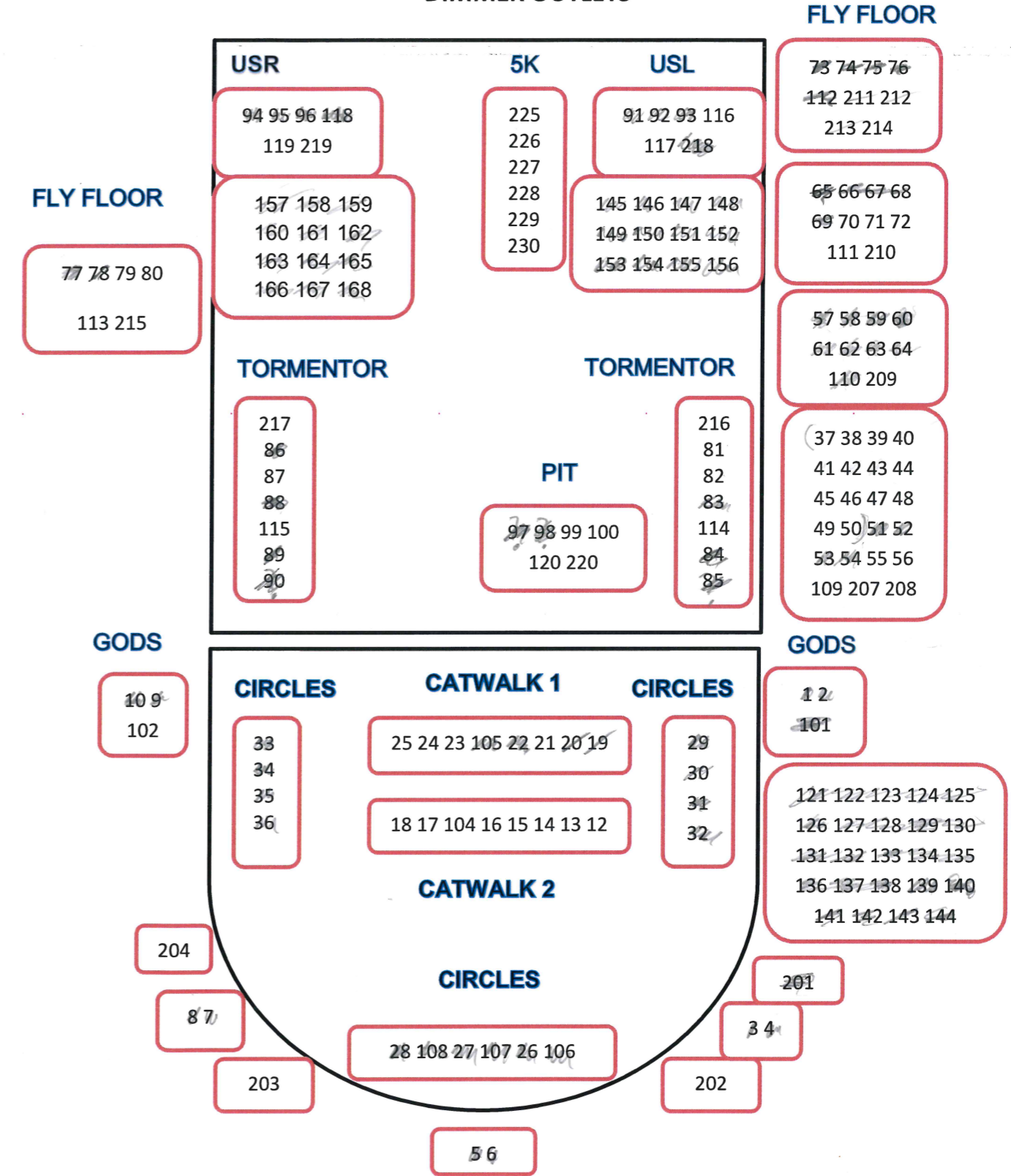
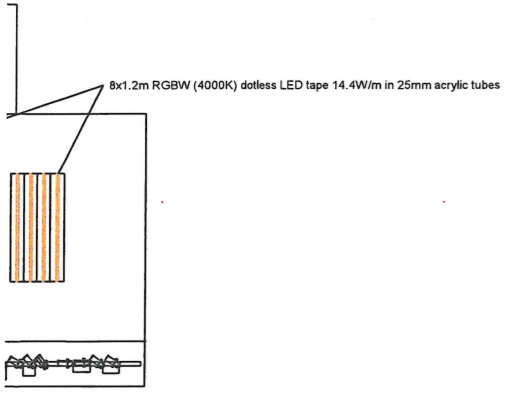
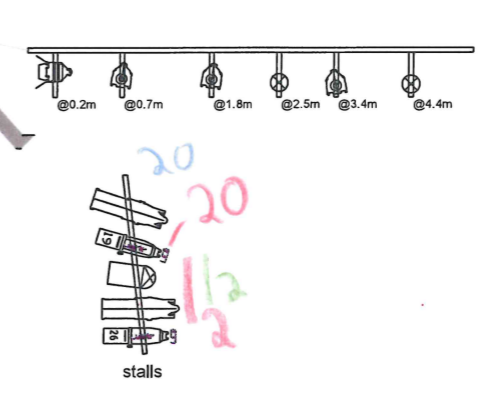
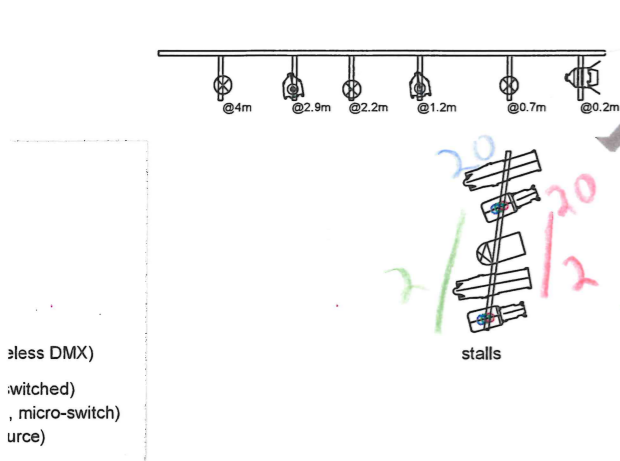
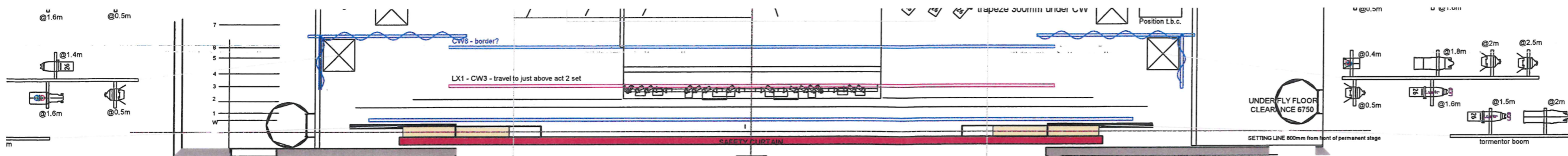


NEW ATHENAEUM THEATRE

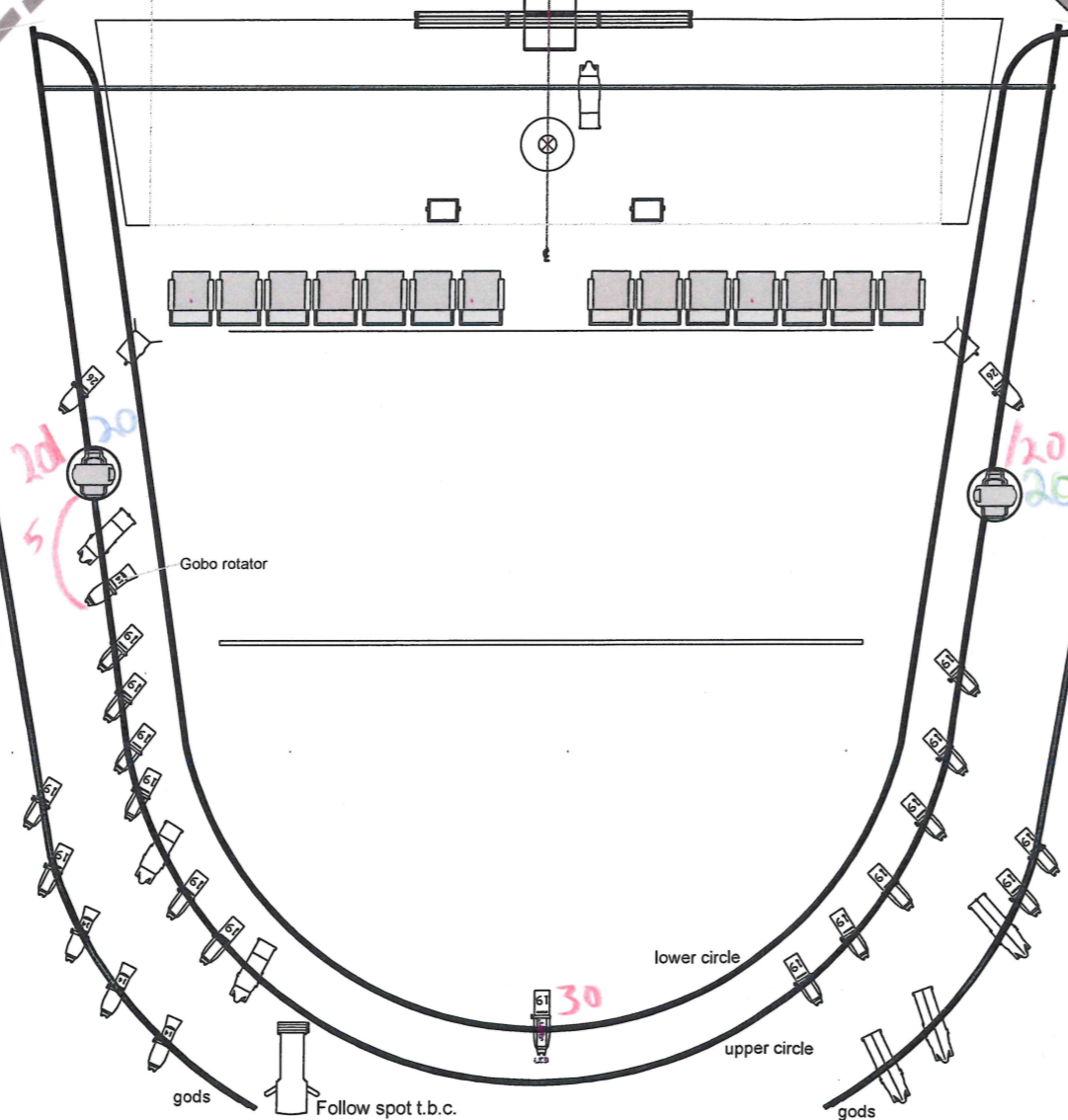
DIMMER OUTLETS



Dimmer Numbers – 1 -168 = 2.5K & 201-230 = 5K
House Light Dimmers – 221 -224



(all single channel)
in ten pairs)



- Ayrton Huracan (x2)
- Mac Encore Performance CLD (x4)
- ETC Source Four LED Series 2 Lustr 14 deg (xNIL)
- ETC Source Four LED Series 2 Lustr 19 deg (x2)
- ETC Source Four LED Series 2 Lustr 26 deg (13)
- ETC Source Four LED Series 2 Lustr 36 deg (x5)
- ETC Source Four LED Series 2 Lustr 50 deg (xNIL)
- ETC Source Four LED Series 2 Lustr 70 deg (xNIL)
- Martin Rush PAR 2 (x6)
- ETC Coloursource PAR (x3)
- ETC Coloursource Fresnel (x2) *NOT AVAILABLE*
- ETC Coloursource Profile 15/30 (x6)
- ETC Source Four 14 deg (x4)
- ETC Source Four 19 deg (x16)
- ETC Source Four 26 deg (x6)
- ETC Source Four 36 deg (xNIL)
- ETC Source Four 50 deg (xNIL)
- ETC Source Four 15/30 (x9)
- ETC Source Four 25/50 (x8)
- 5k Fresnel + BDs (x1)
- 2.5k Fresnel + BDs (x10)
- Selecon Rama 1.2k PC + BD (x9)
- ETC Source Four 750W Fresnel + BD (x4)
- ETC Source Four PAR NSP (x2)
- ETC Source Four PAR MFL (x18)
- ETC Source Four PARNel (x5)
- PAR64 CP62 (x10)
- 150W linear halogen flood (x2)
- Practical / Light Bulb
- Floor Base (x4, of these 1x for 5k Fresnel)
- Boom Base - moving (x4)
- Boom Base - static (x4)
- HAZE dmx-controlled hazer (x1)
- remote-controlled compact smoke machine (x1)
- Look Viper dmx-controlled Smoke Machine (x2)

All colours and diffusion t.b.c.
All heights are to centre of lamp

production	The Wonderful World of Dissocia
company	RCS
venue	New Athenaeum
performance dates	November 2023
director and designer	Director: Finn den Hertog Set Designer: Callum Owens
lighting design	Kai Fischer
drawing	LX rig draft 1
date	09 October 2023

CANNOT GUARANTEE - ORDER 1X BOTTLE FLUID!

DMX
 2M - 44444444
 5M - 1111
 10M - 4444
 15M - 11
 20M - 444444
 30M

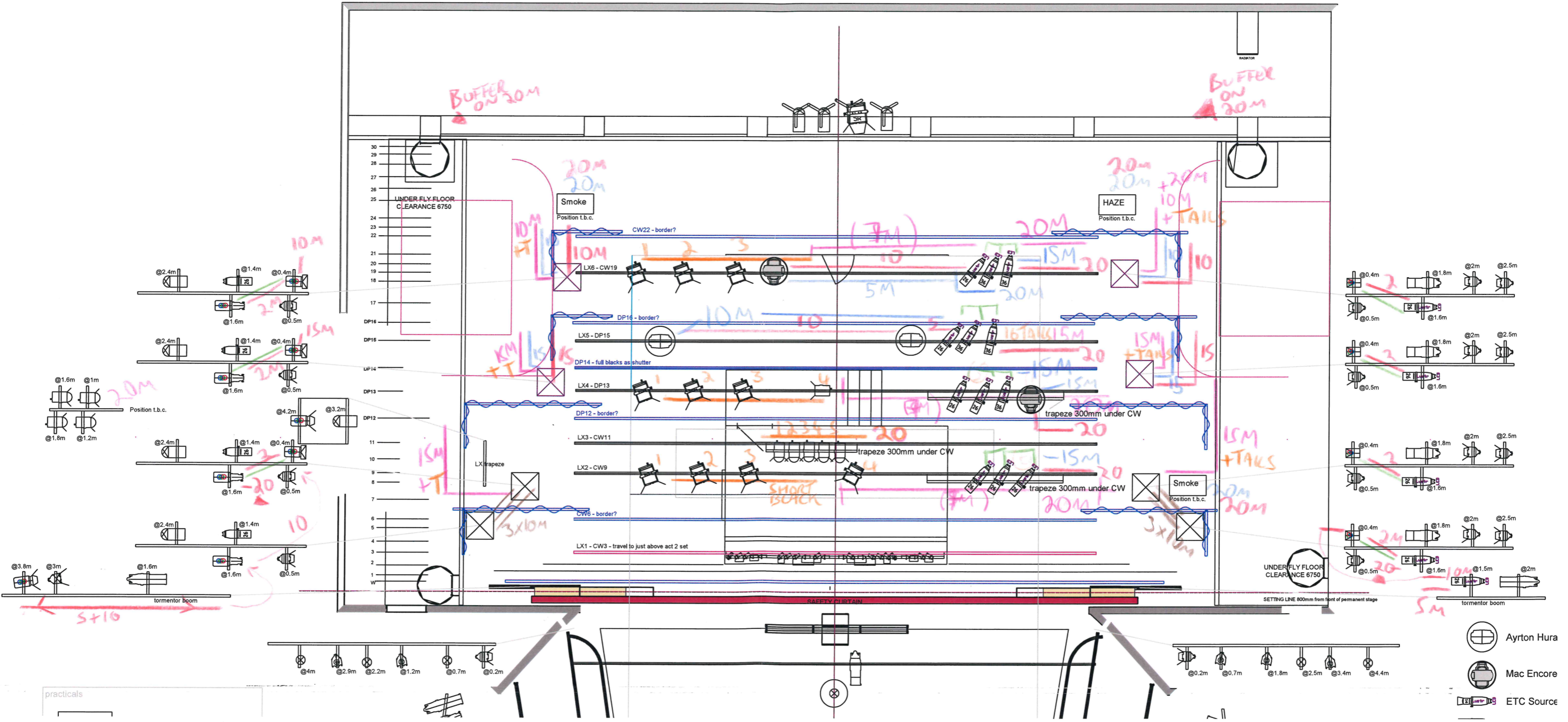
PCON
 2M - 444444
 5M

16A
 2M
 5M - 1
 10M - 11
 15M - 1111
 20M - 444444

SOCA
 5M
 10M 111
 15M - 444
 20M - 4444

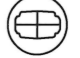


SUMPS

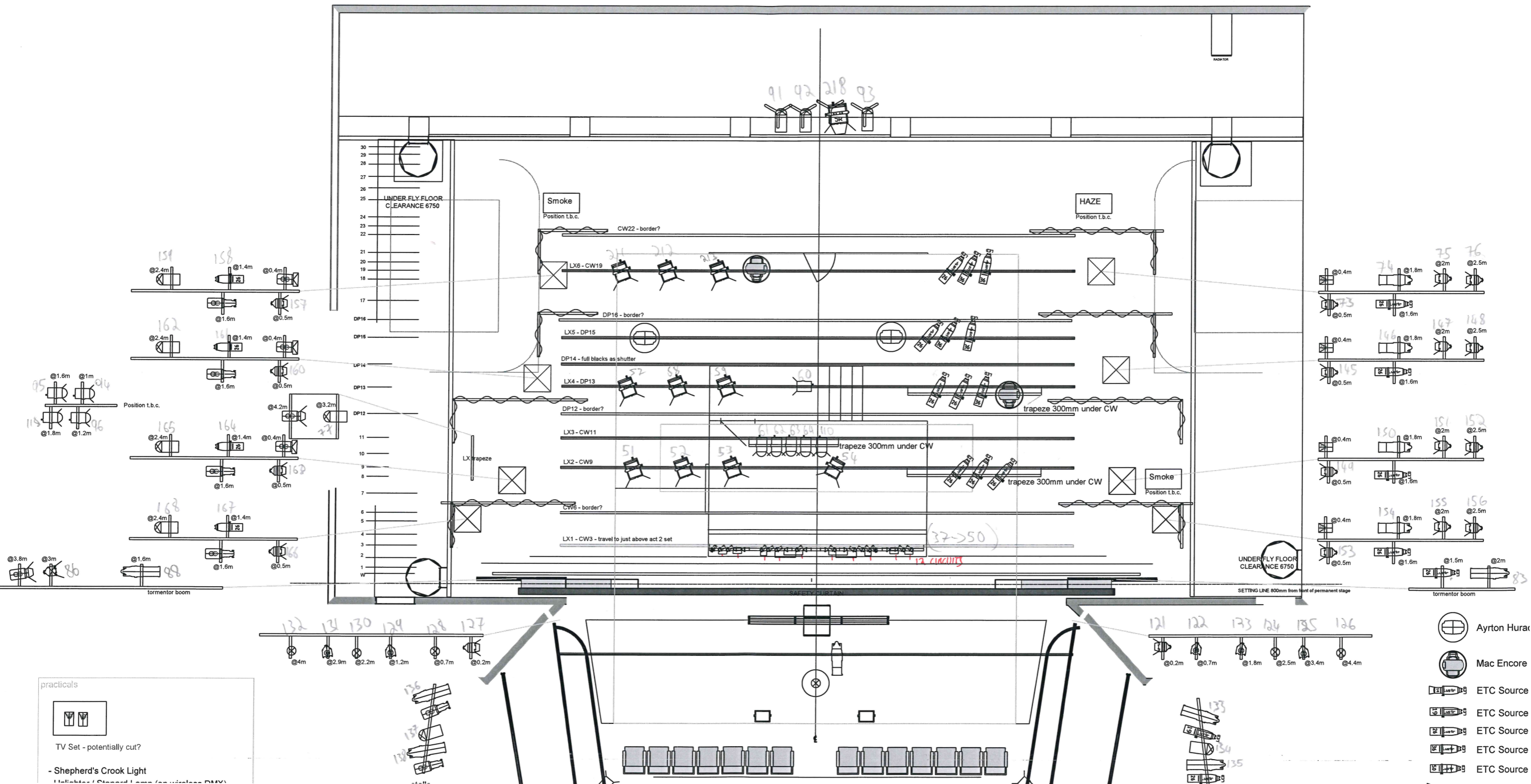
1WB/13OUT
 LONG 12 -
 LONG 6 -
 SHORT 6 - 111
 BOX -
 TAILS - 4444
 16ATAKS - 1




practicals

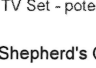
HIRES
 -16A PLUG SPIDER







-  Ayrton Hura
-  Mac Encore
-  ETC Source

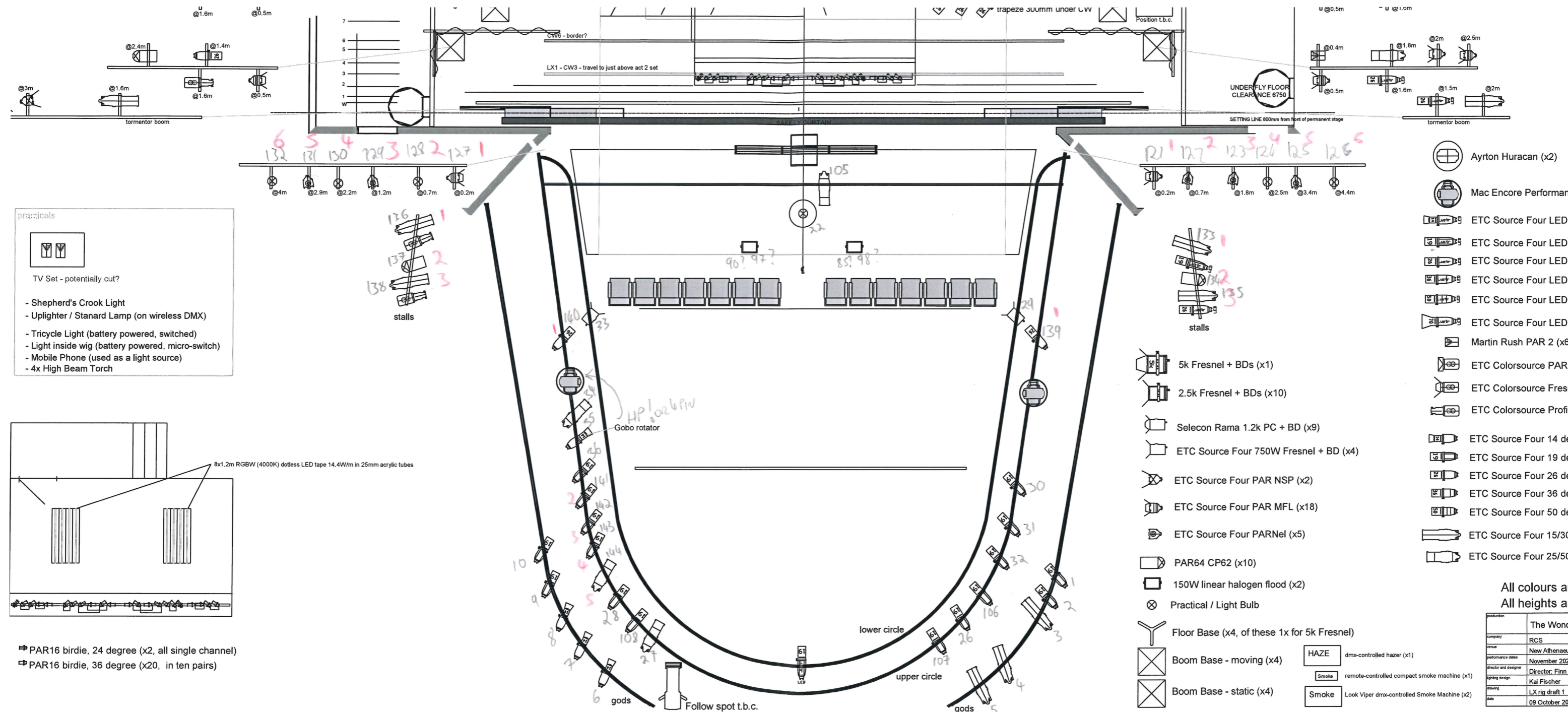


practicals

 TV Set - potentially cut?

 Shepherd's Crook Light

-  Ayrton Hura
-  Mac Encore
-  ETC Source
-  ETC Source
-  ETC Source
-  ETC Source



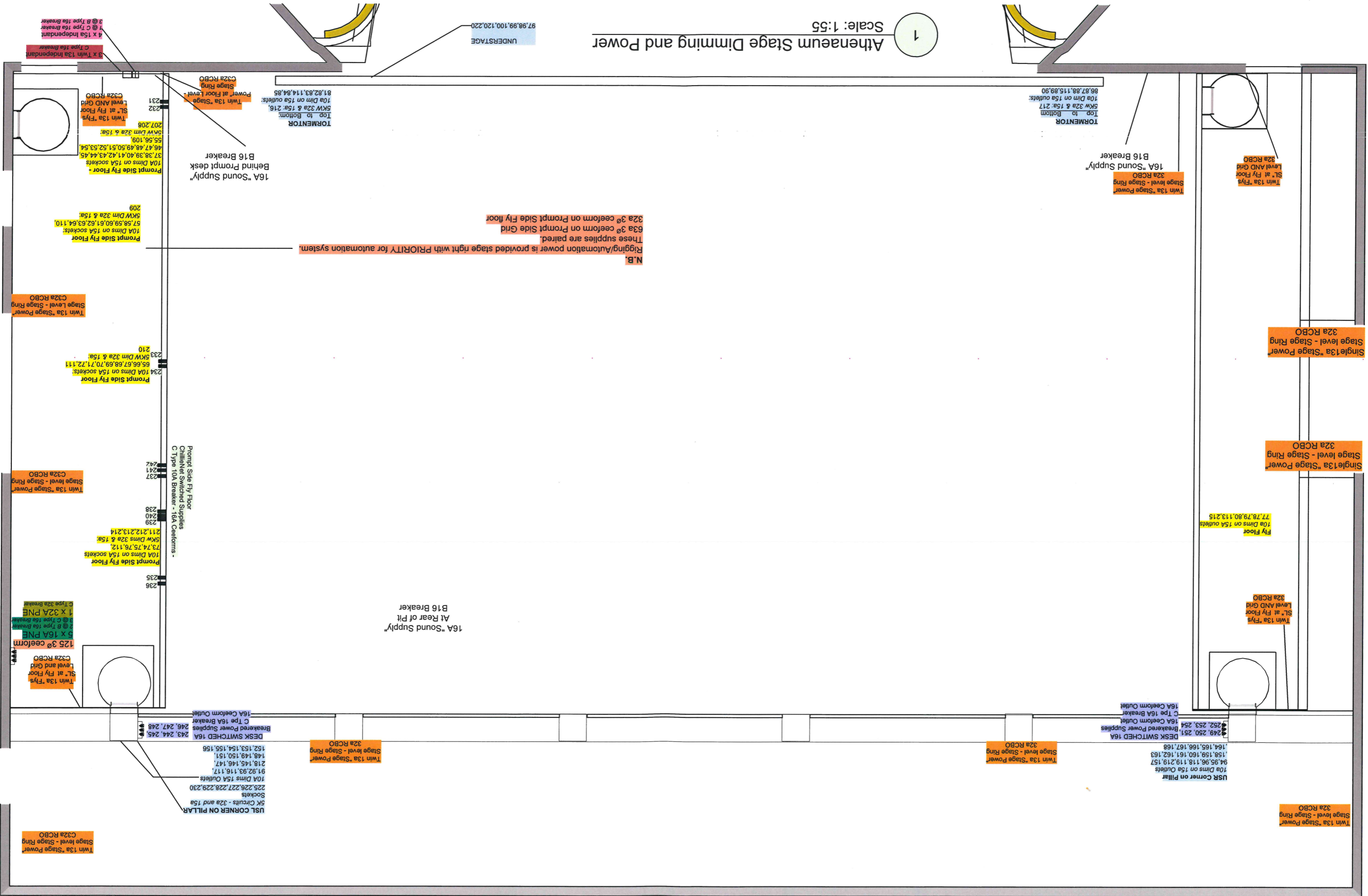
HL 1 - ~~1 2 3 4 5 6~~
 HL 2 - ~~1 2 3 4 5 6~~
 WHITE - ~~1 2 3 4 5 6~~

HR1 - ~~1 2 3 4 5 6~~
 HR2 - ~~1 2 3 4 5 6~~
 WHITE - 1 2 3 4 5 6

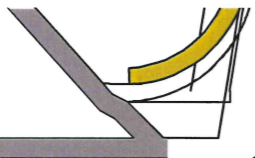
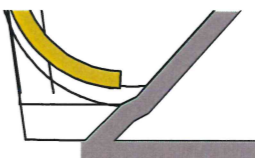
Athenaeum Stage Dimming and Power

Scale: 1:55

1



UNDERSTAGE
97.98,99,100,120,220



3 x Twin 13a Independent
C Type 16a Breaker
4 x 15a Independent
1 @ C Type 16a Breaker
3 @ B Type 16a Breaker

TORMENTOR
Top to Bottom
10a Dim on 15a outlets:
5kw 32a & 15a: 217
86,87,88,115,89,90

TORMENTOR
Top to Bottom
5kW 32a & 15a: 216
81,82,83,114,84,85
Power at Floor Level:
Twin 13a Stage
Stage Ring
C32a RCBO

Twin 13a Flys
SL at Fly Floor
Level AND Grid
C32a RCBO
Twin 13a Flys
SL at Fly Floor
Level AND Grid
C32a RCBO
207,208
55,56,109
46,47,48,49,50,51,52,53,54
37,38,39,40,41,42,43,44,45
10a Dims on 15a sockets
Prompt Side Fly Floor -

Twin 13a Stage Power
Stage level - Stage Ring
32a RCBO
16A "Sound Supply"
B16 Breaker

Twin 13a Flys
SL at Fly Floor
Level AND Grid
32a RCBO

16A "Sound Supply"
Behind Prompt desk
B16 Breaker

N.B.
Rigging/Automation power is provided stage right with PRIORITY for automation system.
63a 3Ø ceform on Prompt Side Fly floor
These supplies are paired.
32a 3Ø ceform on Prompt Side Fly floor

Prompt Side Fly Floor
10a Dims on 15a sockets:
57,58,59,60,61,62,63,64,110
5KW Dim 32a & 15a:
209

Twin 13a Stage Power
Stage level - Stage Ring
C32a RCBO

Prompt Side Fly Floor
10a Dims on 15a sockets:
65,66,67,68,69,70,71,72,111
5KW Dim 32a & 15a:
210

Single 13a Stage Power
Stage level - Stage Ring
32a RCBO

Prompt Side Fly Floor
Chill/Nel Switched Supplies
C Type 10a Breaker - 16A Ceforms -
236
235
234
233
232
231
230
229
228
227
226
225
224
223
222
221
220
219
218
217
216
215
214
213
212
211
210
209
208
207
206
205
204
203
202
201
200
199
198
197
196
195
194
193
192
191
190
189
188
187
186
185
184
183
182
181
180
179
178
177
176
175
174
173
172
171
170
169
168
167
166
165
164
163
162
161
160
159
158
157
156
155
154
153
152
151
150
149
148
147
146
145
144
143
142
141
140
139
138
137
136
135
134
133
132
131
130
129
128
127
126
125
124
123
122
121
120
119
118
117
116
115
114
113
112
111
110
109
108
107
106
105
104
103
102
101
100
99
98
97
96
95
94
93
92
91
90
89
88
87
86
85
84
83
82
81
80
79
78
77
76
75
74
73
72
71
70
69
68
67
66
65
64
63
62
61
60
59
58
57
56
55
54
53
52
51
50
49
48
47
46
45
44
43
42
41
40
39
38
37
36
35
34
33
32
31
30
29
28
27
26
25
24
23
22
21
20
19
18
17
16
15
14
13
12
11
10
9
8
7
6
5
4
3
2
1

Twin 13a Stage Power
Stage level - Stage Ring
C32a RCBO

Prompt Side Fly Floor
10a Dims on 15a sockets:
73,74,75,76,112
5KW Dims 32a & 15a:
238

Single 13a Stage Power
Stage level - Stage Ring
32a RCBO

Fly Floor
10a Dims on 15a outlets
77,78,79,80,113,215

16A "Sound Supply"
At Rear of Pit
B16 Breaker

Twin 13a Flys
SL at Fly Floor
Level AND Grid
32a RCBO

USR Corner on Pillar
10a Dims on 15a Outlets
94,95,96,118,119,219,157
158,159,160,161,162,163
164,165,166,167,168
249,250,251
DESK SWITCHED 16A
Breakered Power Supplies
16A Ceform Outlet
252,253,254
C Type 16a Breaker
16A Ceform Outlet

Twin 13a Stage Power
Stage level - Stage Ring
32a RCBO

USR CORNER ON PILLAR
5K Circuits - 32a and 15a
Sockets
225,226,227,228,229,230
10a Dims 15a Outlets
91,92,93,116,117
218,145,146,147
148,149,150,151
152,153,154,155,156
DESK SWITCHED 16A
Breakered Power Supplies
246,247,248
C Type 16a Breaker
16A Ceform Outlet

Twin 13a Stage Power
Stage level - Stage Ring
32a RCBO

Twin 13a Stage Power
Stage level - Stage Ring
32a RCBO

Twin 13a Stage Power
Stage level - Stage Ring
C32a RCBO

