

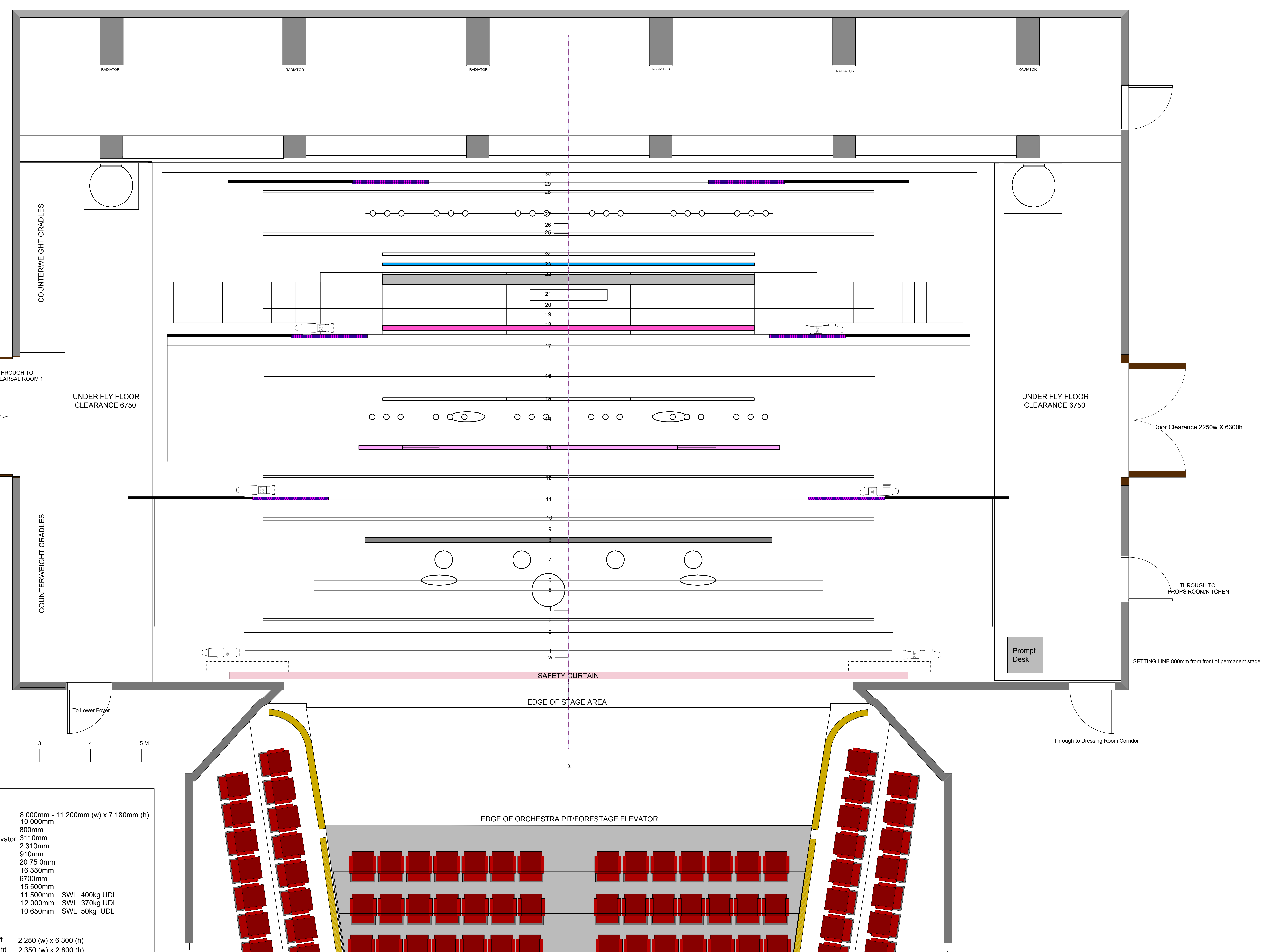
- 30 Cyc.
- 29 Border
- 28 LX 7
- 27 Festoons
- 26 LX 6
- 24 Boutique Sign
- 23 Department Store (H+H)
- 22 Harvard
- 21 Hemp Border
- 20 Elles Door
- 19 LX 5
- 18 U.C.L.A
- 17 Border Graduation Banners
- DP16 LX 4
- DP15 Black Boards
- DP14 Mannequins/Festoon
- DP13 Hair Affair
- DP12 LX 3
- 11 Border
- 10 LX 2
- 9 Prison Bars
- 8 Hair Affair Practicals
- 7 Mannequins
- 6 Shower Curtain
- 5
- 4
- 3 LX 1
- 2 Full Black (Blinder)
- 1 White Gauze
- W Border

**TECHNICAL DATA**

Proscenium Opening	8 000mm - 11 200mm (w) x 7 180mm (h)
Setting Line to D/S of Rear Columns	10 000mm
Setting Line To Edge Of Stage	800mm
Setting Line To Edge of Forestage/Pit Elevator	3 110mm
Depth of Forestage/Pit Elevator	2 310mm
Height of Stage from Stalls Level	910mm
Max Width of Stage	20 750mm
Width Between Fly Floors	16 550mm
Clearance To Underside of Fly Floors	6700mm
Height to Underside of Grid (Bar Travel)	15 500mm
Bar Width Counter Weights	11 500mm SWL 400kg UDL
Bar Width DP Counter Weights	12 000mm SWL 370kg UDL
Bar Width Hemp Sets	10 650mm SWL 50kg UDL

Get In Clearance Dimensions	Stage Left	2 250 (w) x 6 300 (h)
	Stage Right	2 350 (w) x 2 800 (h)



13/02/2014

Groundplan

Legally Blonde



*Legally Blonde*

Groundplan

Director	Andrew Panton
Stage Manager	Rosie Barbor
TSM	Andrew McCabe
Drawn By	Becky Minto/Andrew McCabe

Designer	Becky Minto	Drawing Number	0	
LX Design	Simon Wilkinson			
Date	13/02/2014	Scale		1:25@A0