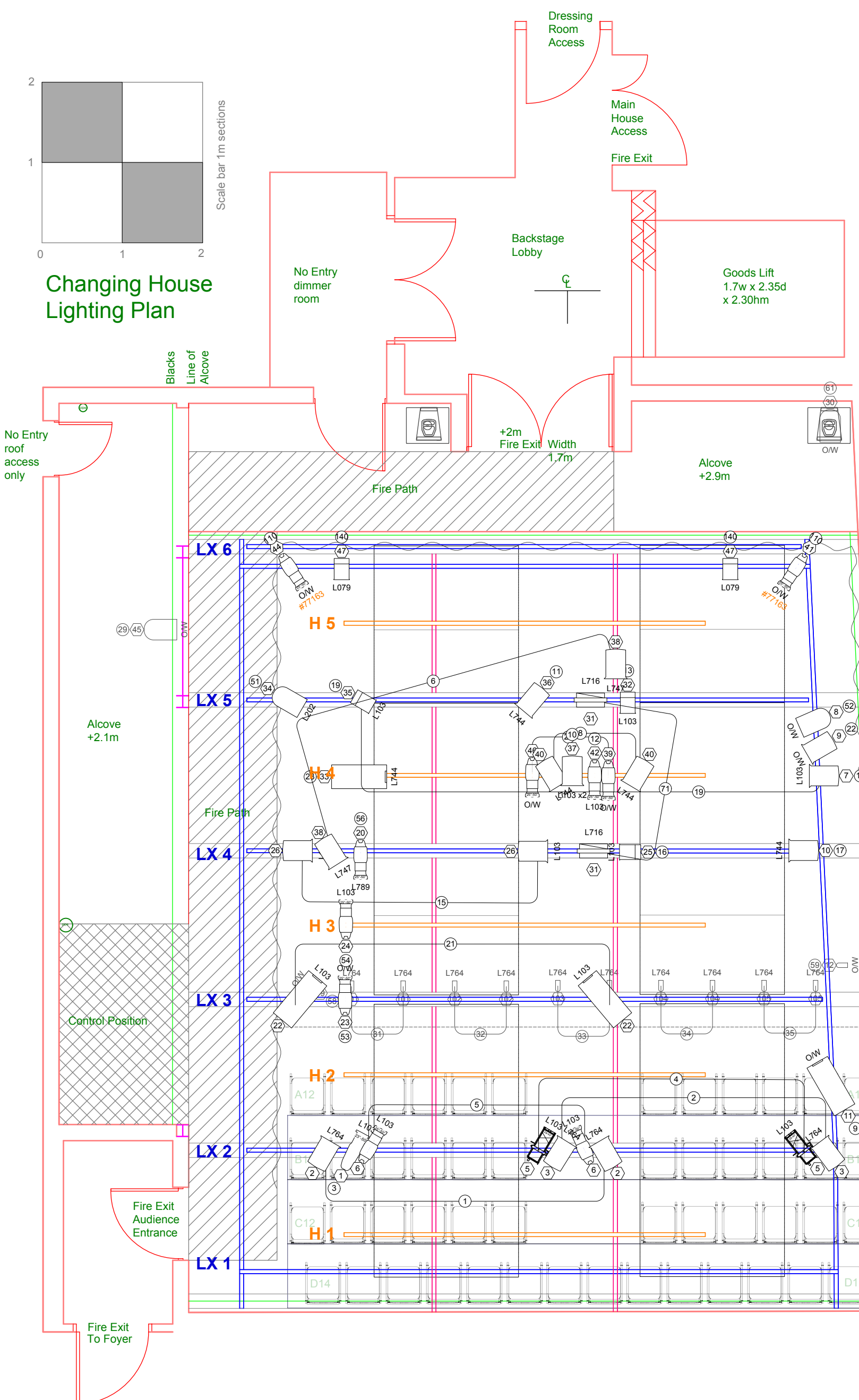


Changing House Lighting Plan



Houselights: CC 48 - Ch. 201

- Strand Prelude 16/30°
- Strand Prelude 28/40°
- ETC Source 4 Jr Zoom
- Strand Quartet Fresnel 650W
- CCT Starlette 1kW Fresnel
- Par 64 - CP62 MFL
- Strand SL 23/50°
- Strand Nocturne 1000W

- Starlette x15 Prelude x4 16/30°
- S4 x10 Prelude x2 28/40°
- Quartet x5 Par x4
- Birdie x12 Nocturne x2

VENUE INFORMATION

For Lighting information see document: **Changing House - Lighting Rig Info**
Control Position is to the SR of stage area

Notes
FIGURED DIMENSION TO BE TAKEN IN PREFERENCE TO SCALED DIMENSIONS
ALL DIMENSIONS TO BE CHECKED ON SITE

Tron Theatre Ltd, 63 Trongate, Glasgow, G1 5HB
Box Office: 0141 552 4267
Bar Kitchen: 0141 552 8587

Tron Theatre Ltd is a Scottish registered charity, No: SC012081
Glasgow City Council
Scottish Arts Council
Scottish Arts Council Lottery Funded

PRODUCTION TITLE: The Possibilities	
DRAWING TITLE: O/H LX Rig	
SCALE: A3 @1:50	
DIRECTOR: Guy Hollands	SET DESIGNER: Cassie Pettigrew
DATE: 24th May 2013	LIGHTING DESIGNER: Oliver Gorman
VENUE: Tron Theatre	DRAWING NUMBER: 1 of 1
Changing House - LX Rig Plan	