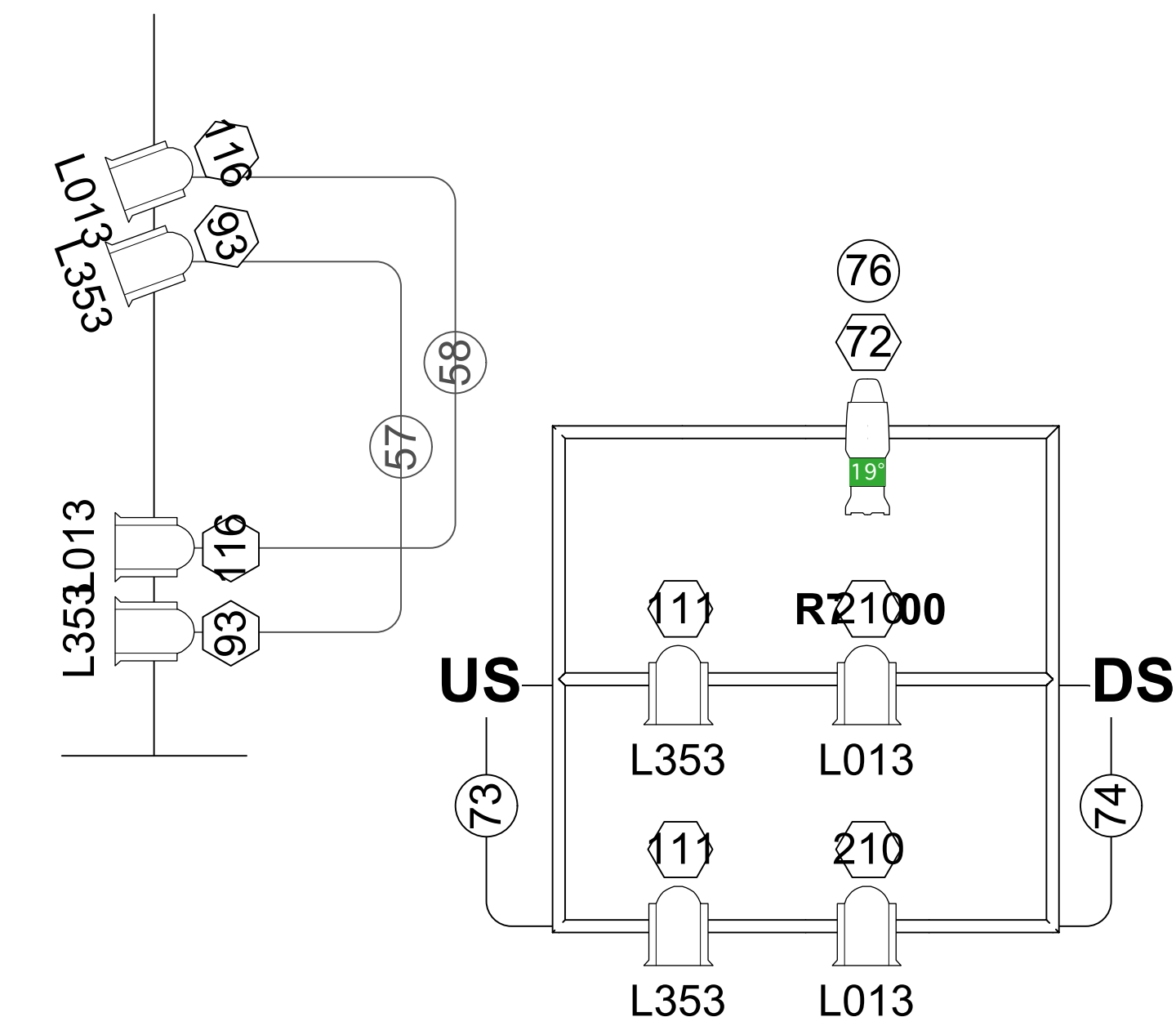
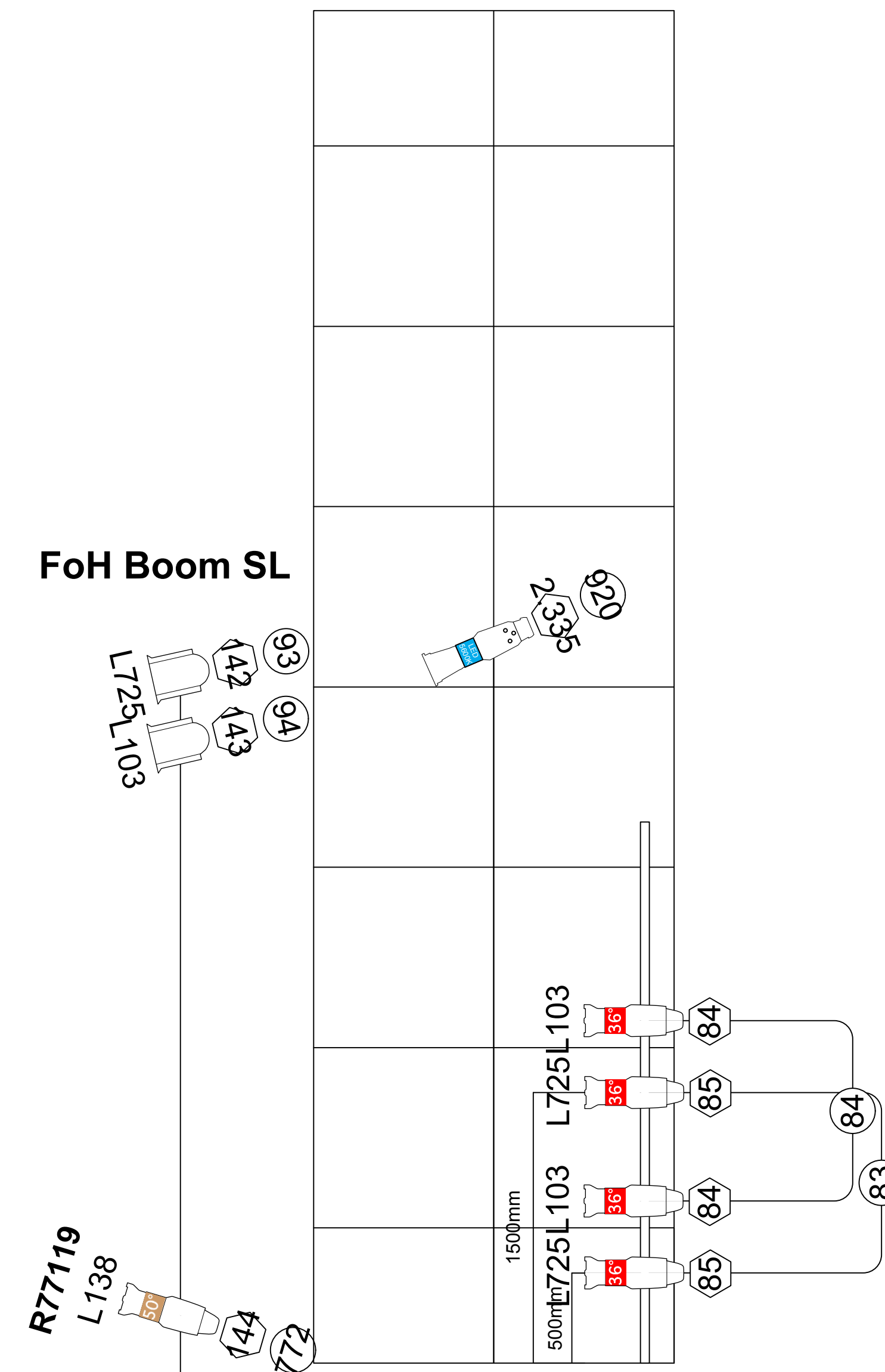
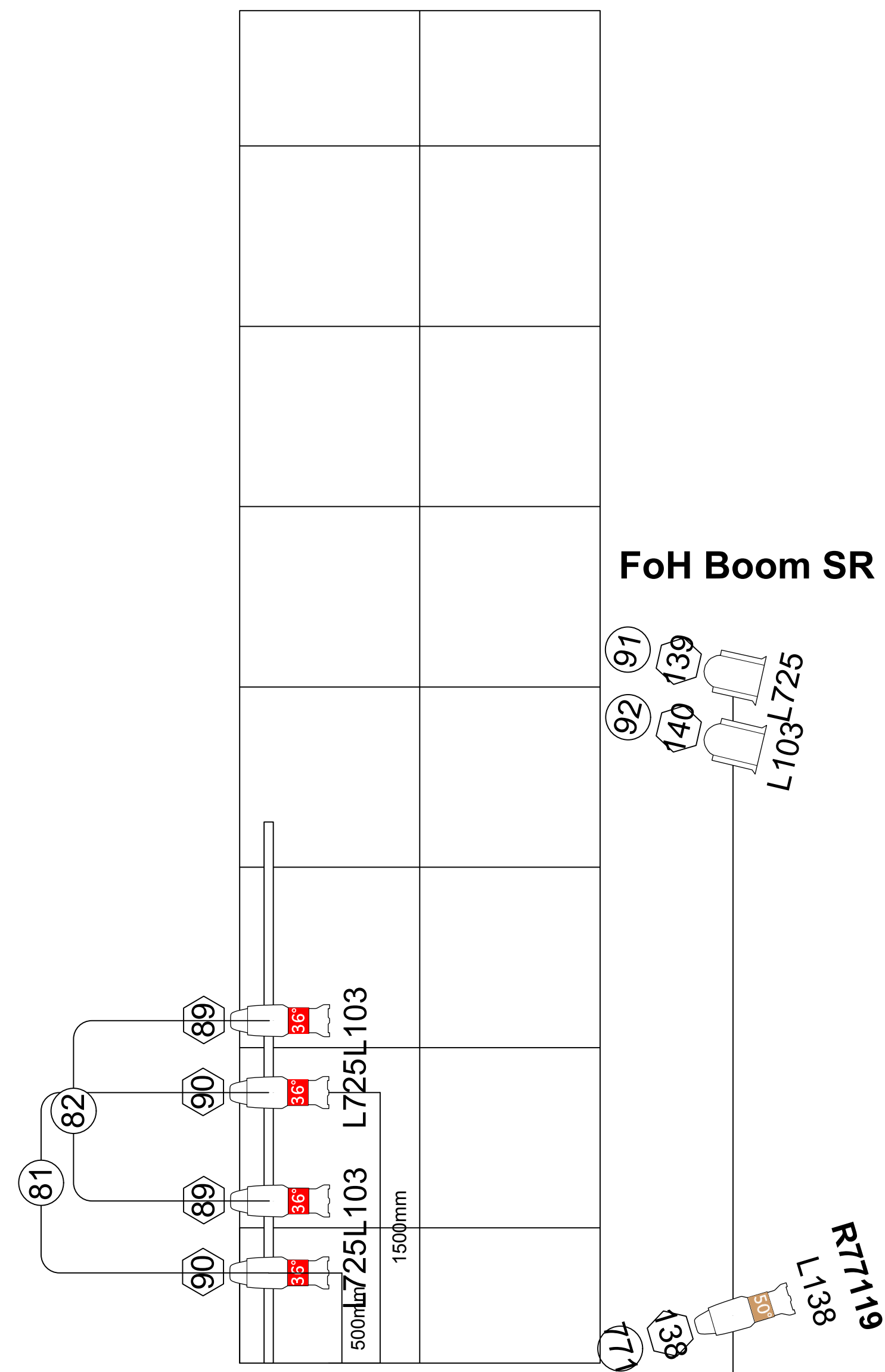


Tormentor SR



Tormentor SL



Symbol Key

	Etc Source 4 14° @ 750 w	0 / 4
	ETC Source-4 19° @ 750w	6 / 20
	ETC Source 4 26° @ 750w	12 / 20
	ETC Source-4 36° @ 750w	22 / 20
	ETC Source-4 50° @ 750w	12 / 10
	Etc Source 4 70° @ 750w	5 / 6
	Etc Source 4 L.E.D	5 / 0
	ETC Source-4 Zoom 25°-50° @ 750w	7 / 10
	ETC Source 4 PAR MCM (VNSP) @ 750w	42 / 60
	Selecon 1200 Fresnel @ 1.2kw	58 / 50
	Selecon High Performance 7° PC @ 1.2kw	4 / 10
	CCT Starlette Fresnel @ 2kw	9 / 10
	ADB CH50 Fresnel	1 / 0
	Strand Coda 1000 @ 1kw	20 / 20
	Selecon LUI CYC 1 @ 750w	8 / 12
	Orion Groundrow @ 800w	32 / 32
	Par 64 CP62 @ 1kw	3 / 0
	PAR MR-16 Birdie-WFL	8 / 0
	Robe ColorSpot 250 AT @ 250w	2 / 2
	Robin 300 LEDWash @ 200w	2 / 2
	VL-1000 Tungsten dimmer @ 1kw	4 / 4
	Robe ColorWash 250 AT @ 250w	2 / 2



Jack and the Beanstalk

Booms LX Plan

Director Alasdair Hawthorne  
 Stage Manager Natalie Wilson  
 TSM Jenny Howes  
 Drawn By Oliver Gorman

Designer Robin Peoples  
 LX Design Oliver Gorman  
 Date 17/11/13  
 Scale 1:25@A0

Drawing Number

4

17/11/13

Booms LX Plan

Jack and the Beanstalk