

Smart line module: converts AC to DC and regens energy into the mains.

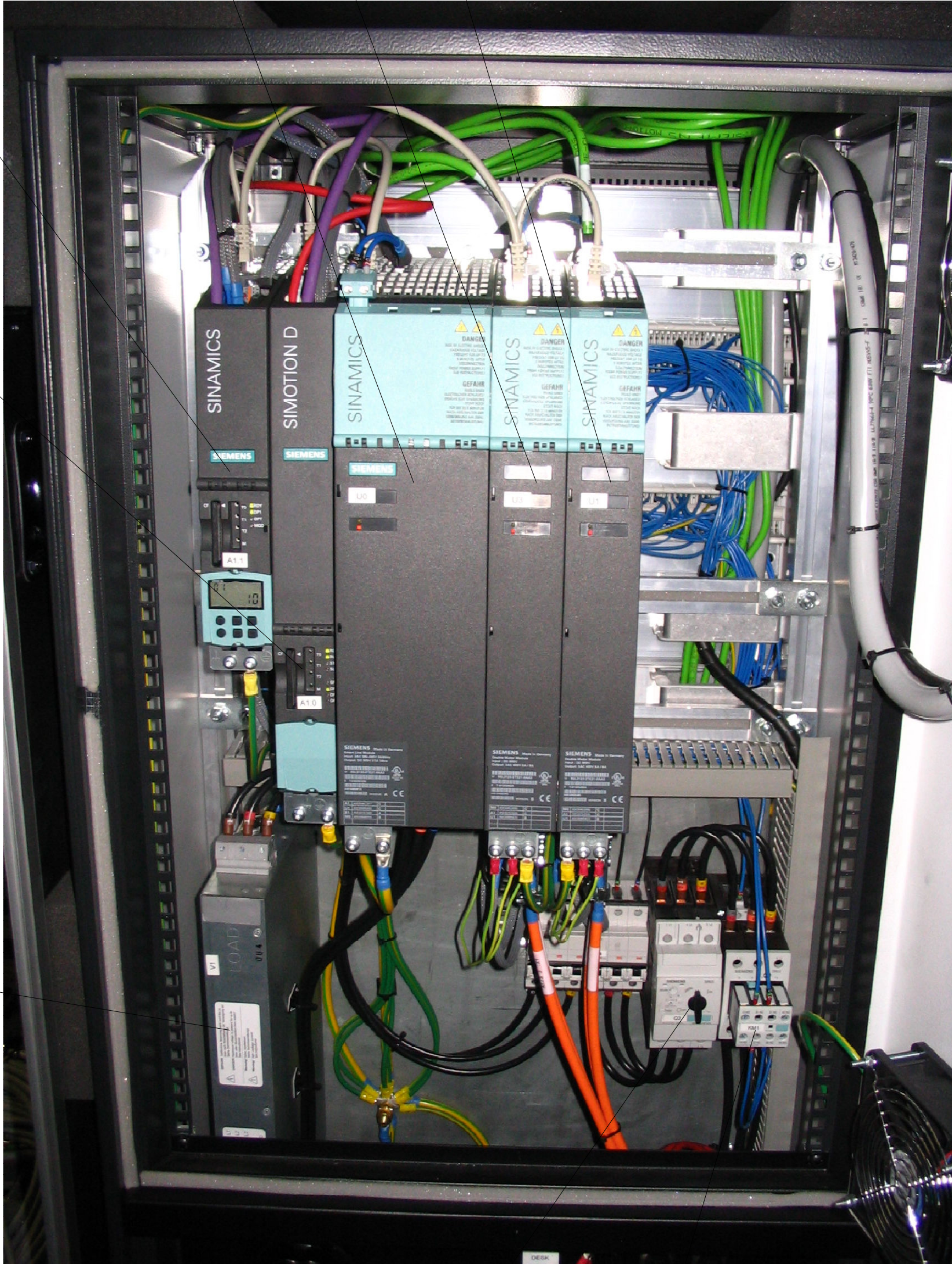
Double drive unit: powers motors and takes encoder feedback

Double drive unit: powers motors and takes encoder feedback

Controller 2: This Controls the drive units according to instructions from Controller 1

Controller 1: This Controls the Rectifier and contains the higher level Program.

Mains filter: Filters out power ripples before the smart line module



Main Circuit breaker: Vertical=on Horizontal=off 45 Degrees = tripped

Estop contactor

Main Estop relay with time delayed contacts

24VDC Power Supplies

24VDC Power Supplies

24VDC Fuse Holders

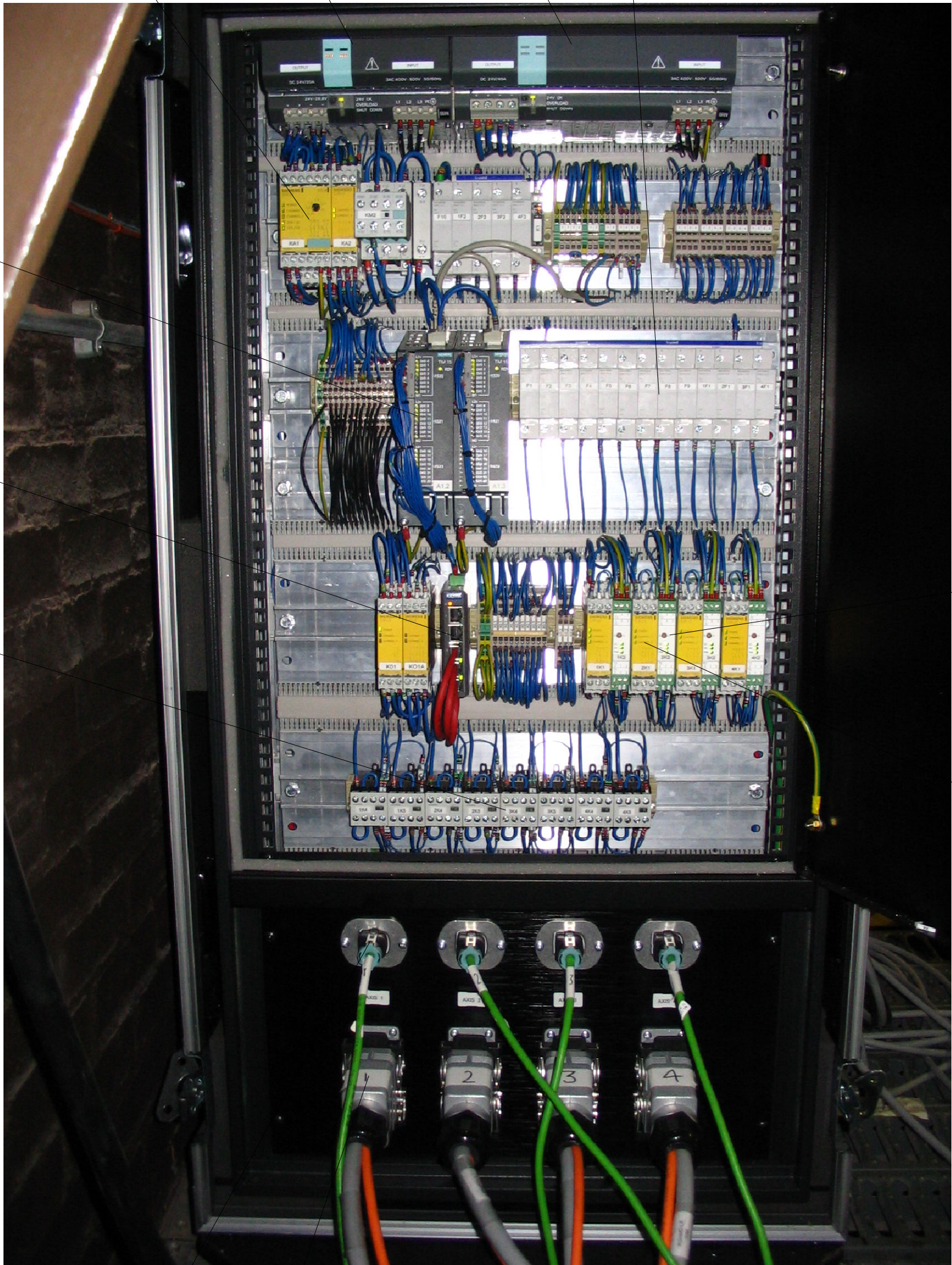
IO Modules (One 'set' per winch)

Ethernet Hub for desk coms

Brake Contactors (One per brake ie two per winch)

Cross groove relay (three lights means no cross groove triggered)

Ultimate limit relay (three lights means no ultimate struck)



Encoder Connection point

Motor power and limits connection point