

A

A

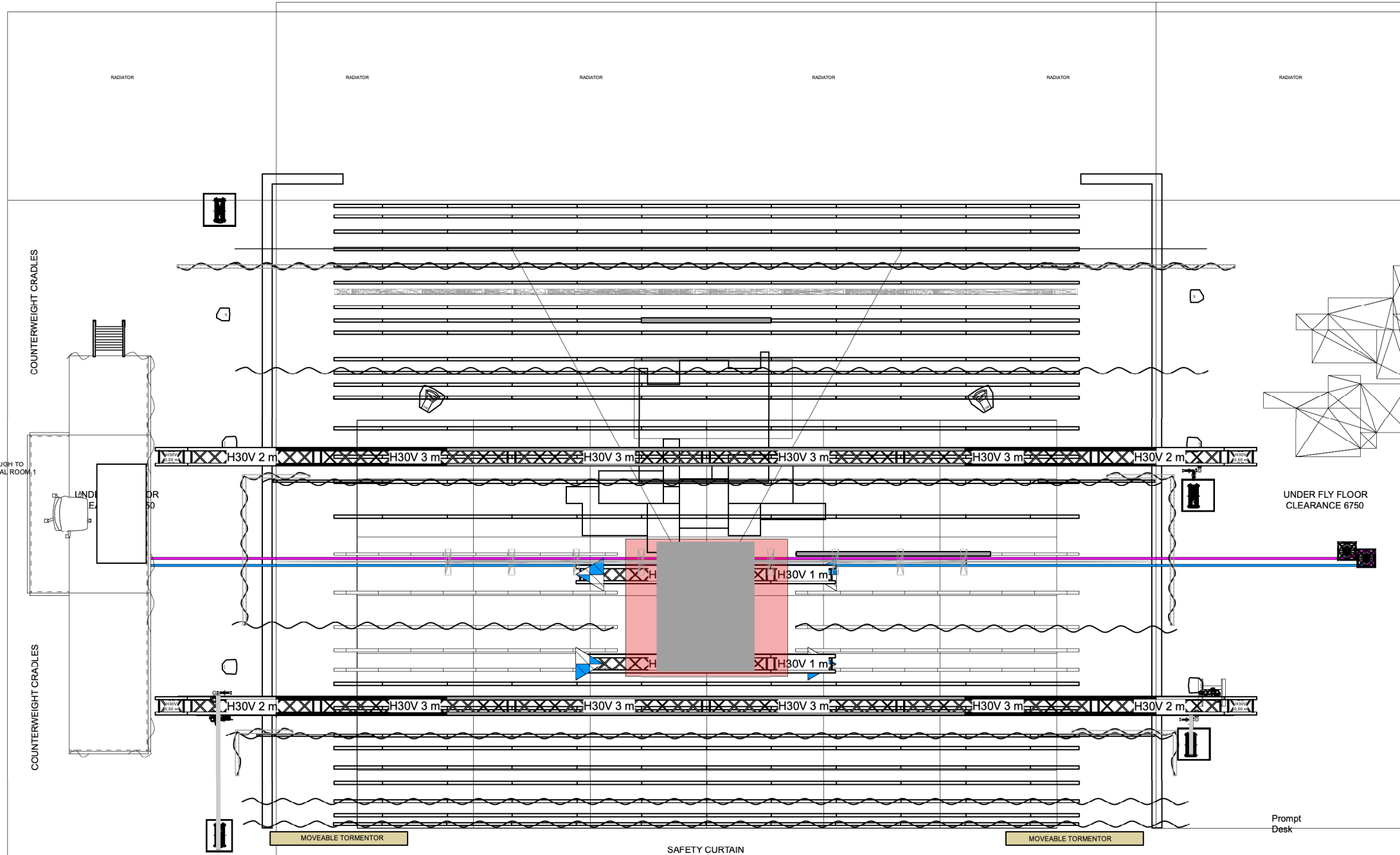
B

B

C

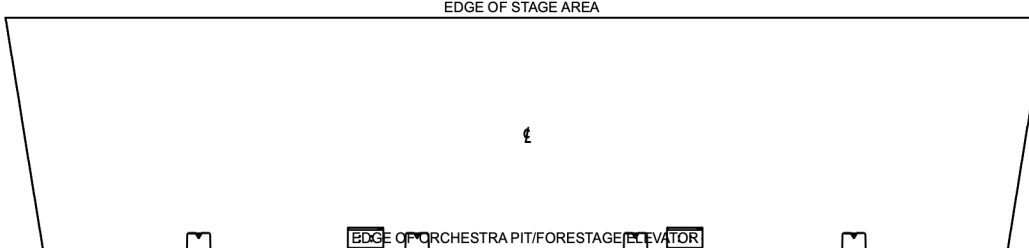
C

- 30
- 29
- 28
- 27
- 26
- 25
- 24
- 23
- 22
- 21
- 20
- 19
- 18
- 17
- DP16
- DP15
- DP14
- DP13
- DP12
- 11
- 10
- 9
- 8
- 7
- 6
- 5
- 4
- 3
- 2
- 1
- W



**TECHNICAL DATA**

Recommended Proscenium Opening	9 200mm
Proscenium Opening	8 000mm - 11 200mm (w) x 7 180mm (h)
Setting Line To D/S of Rear Columns	10 000mm
Setting Line To Edge Of Stage	800mm
Setting Line To Edge of Forestage/Pit Elevator	3110mm
Depth of Forestage/Pit Elevator	2 310mm
Height of Stage from Stalls Level	910mm
Max Width of Stage	20 750mm
Width Between Fly Floors	16 550mm
Clearance To Underside of Fly Floors	6700mm
Height to Underside of Grid (Bar Travel)	15 500mm
Bar Width Counterweights	11 500mm SWL 400kg UDL / 45kg PL
Bar Width DP Counterweights	12 000mm SWL 370kg UDL / 50kg PL
Bar Width Hemp Sets	10 650mm SWL 50kg UDL
Get In Clearance Dimensions	
Stage Left	2 250 (w) x 6 300 (h)
Stage Right	2 350 (w) x 2 800 (h)



**1 Main Groundplan**  
Scale: 1:75

**Updates**  
April 2022  
Optimal proscenium dimensions  
9200mm (w) x 6900 (h)

**Title**  
FOH Sound Position Added  
Steve MacLuskey 0141 270 8257  
Simon Cook 0141 270 8257

<b>003</b>	<b>T. Cass</b>	<b>19/05/2024</b>
<b>CAD File Name</b> TSD - Sweet Charity Plan		