

LX 6 TRIPE
GO THIS WAY
←←←←←←←←←←

LX 6 - 15A Fanout
15m Soca SR
Soca to **FLYFLOOR** CW 28

LX 5 - 15A Silver 6 way IWB SL
15m Soca SL
Soca to PS Flies
16A from Stock
5 pin from Stock CW 26

LX 4 - 15A Silver 12 way IWB SL and SR CW 17
2 x 15m Soca SL
2 x 20m Soca SR
all 4 to PS Flies
16A from Stock
5 pin from Stock

LX 3 - 15A Silver 6 way IWB SL AND Just SR of Centre CW 13
15m Soca SL
15m Soca SR
Both to PS Flies
16A from Hire Box and Stock
5 pin from Hire Box and Stock

LX 2.5 - Mirroballs Grelco Together
Then Single Line TRS to PS Flies

LX 2 - 15 A Tailset SL and SR CW 7
10m Soca SL
20m Soca SR
Both to PS Flies
16A from Hire Box
5pin From Hire Box

LX 1.5 - Grelco For UV Cannons
Then Two lines TRS to PS Flies

LX 1 - 15 A Tailset SL CW 4
13m Soca to PS Flies
16A from Stock
5pin From Stock

INTOR MOVEABLE
SAFETY CURTAIN



Dick McWhittington

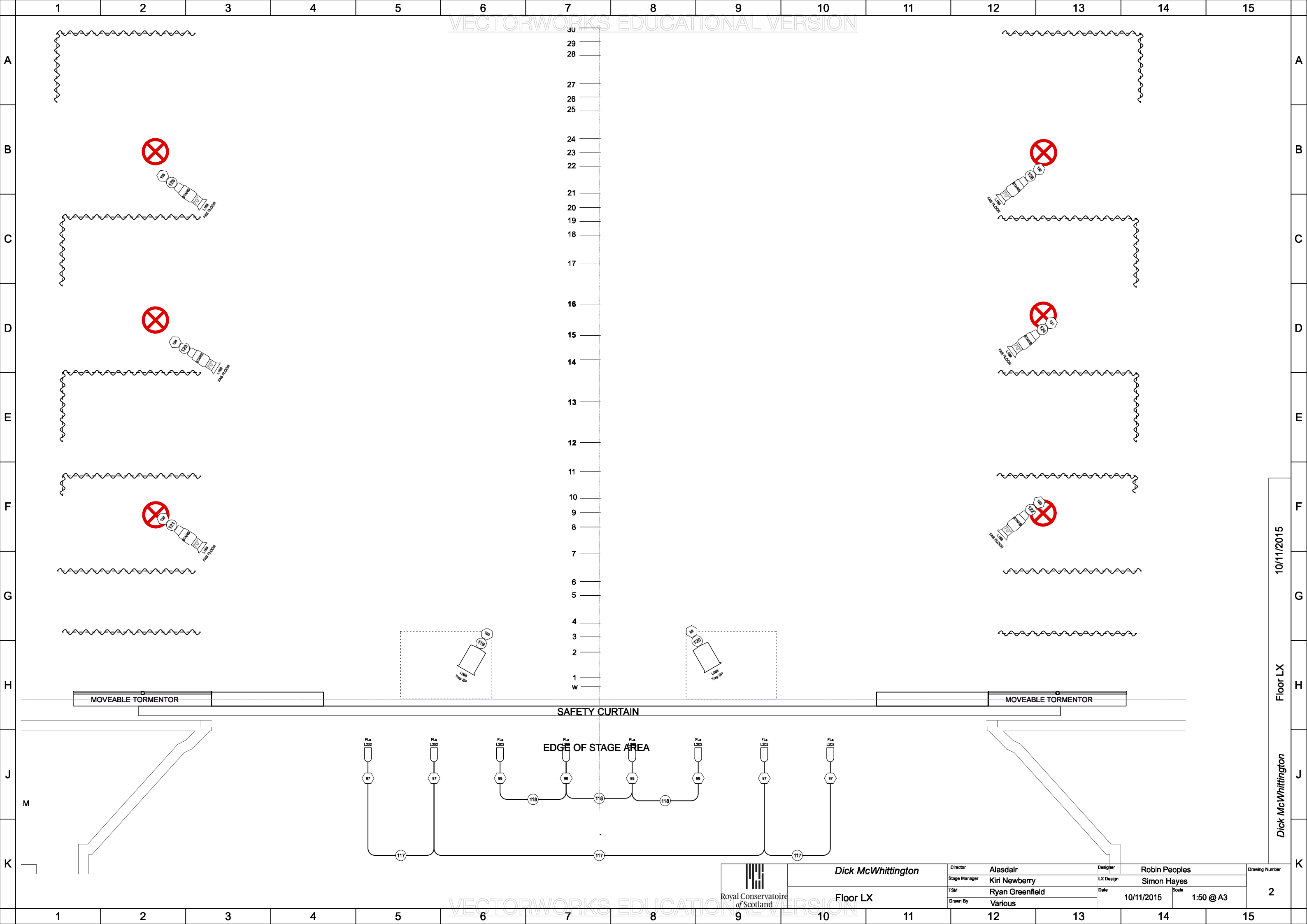
OH LX

Director	Alasdair	Designer	Robin Peoples	Drawing Number
Stage Manager	Kiri Newberry	LX Design	Simon Hayes	1
TSM	Ryan Greenfield	Date	10/11/2015	
Drawn By	Various	Scale	1:45 @ A3	

10/11/2015

OH LX

Dick McWhittington



10/11/2015
Floor LX
Dick McWhittington



Royal Conservatoire
of Scotland

Dick McWhittington

Floor LX

Director	Alasdair
Stage Manager	Kiri Newberry
TSM	Ryan Greenfield
Drawn By	Various

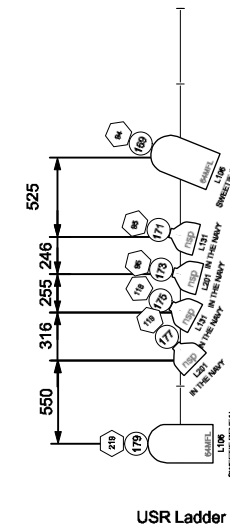
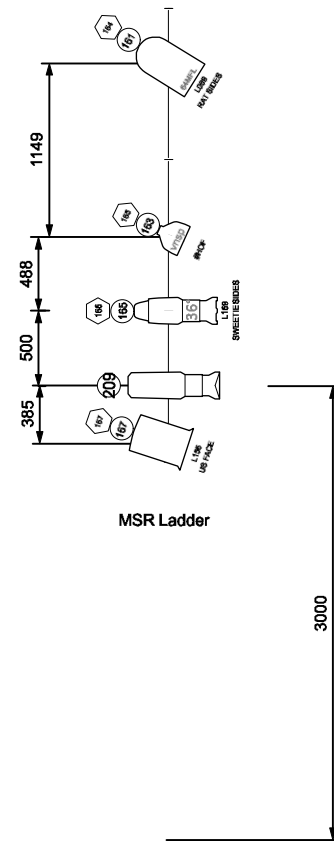
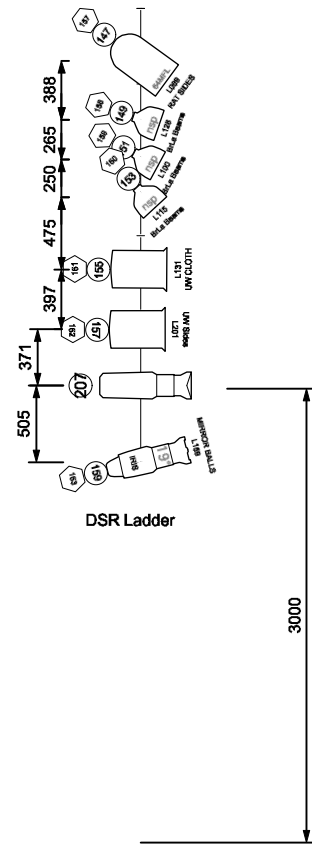
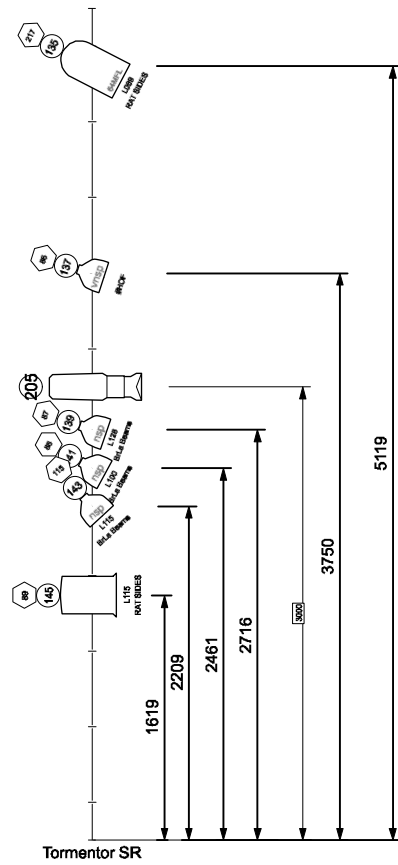
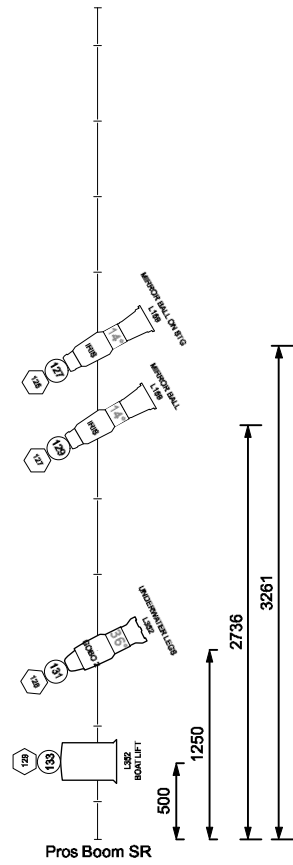
Designer	Robin Peoples
LX Design	Simon Hayes
Date	10/11/2015
Scale	1:50 @ A3

Drawing Number	2
----------------	---

DSR LADDER
36m Soca to USR Patch Bay
DMX and 16 from Hires

MSR LADDER
20m Soca to USR Patch Bay
DMX and 16 from Hires

USR LADDER
20m Soca to USR Patch Bay



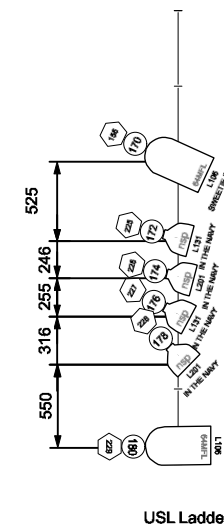
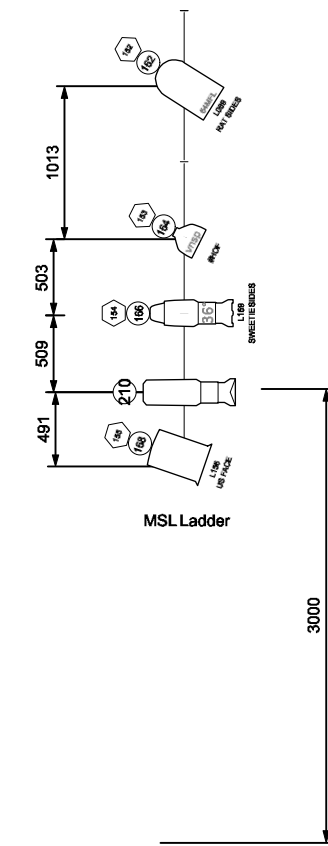
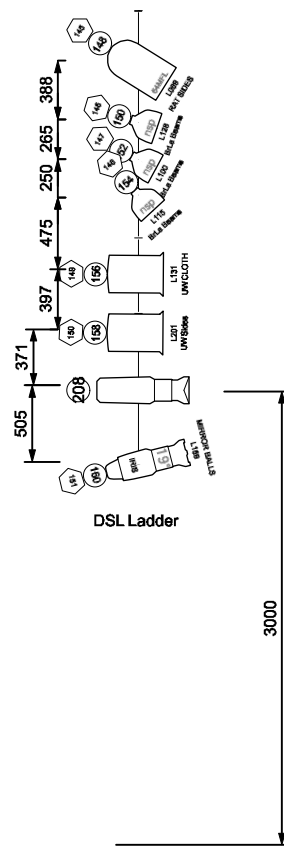
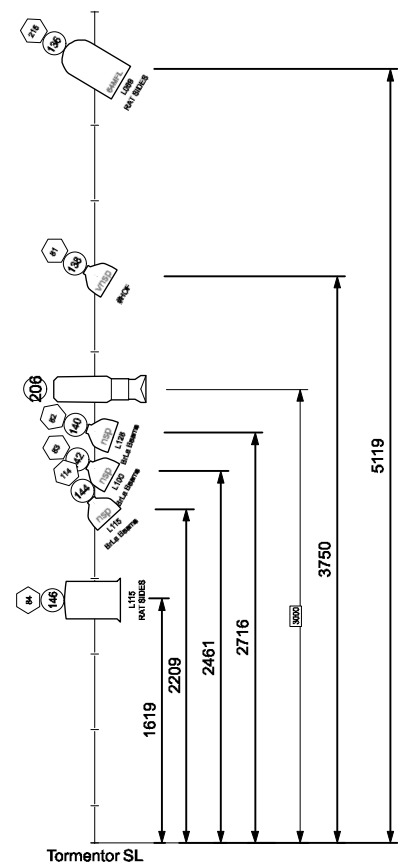
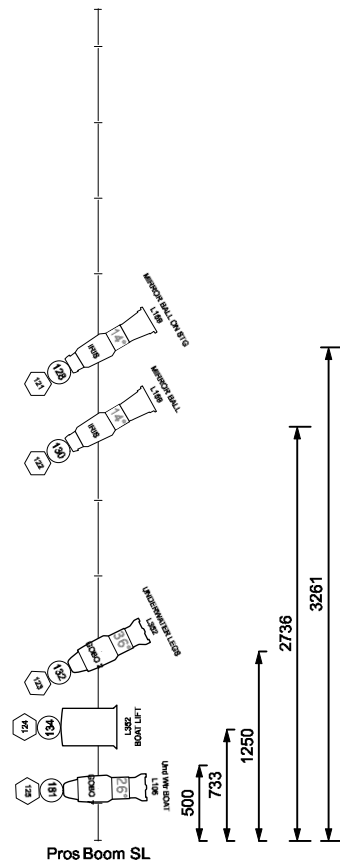
Dimensions on the Right
are absolute lens heights

Dimensions on the Left are relative
heights for ladder construction

DSL LADDER
30m Soca to USL Patch Bay
DMX and 16 from Hires

MSL LADDER
20m Soca to USL Patch Bay
DMX and 16 from Hires

USL LADDER
19m Soca to USL Patch Bay



Dick McWhittington

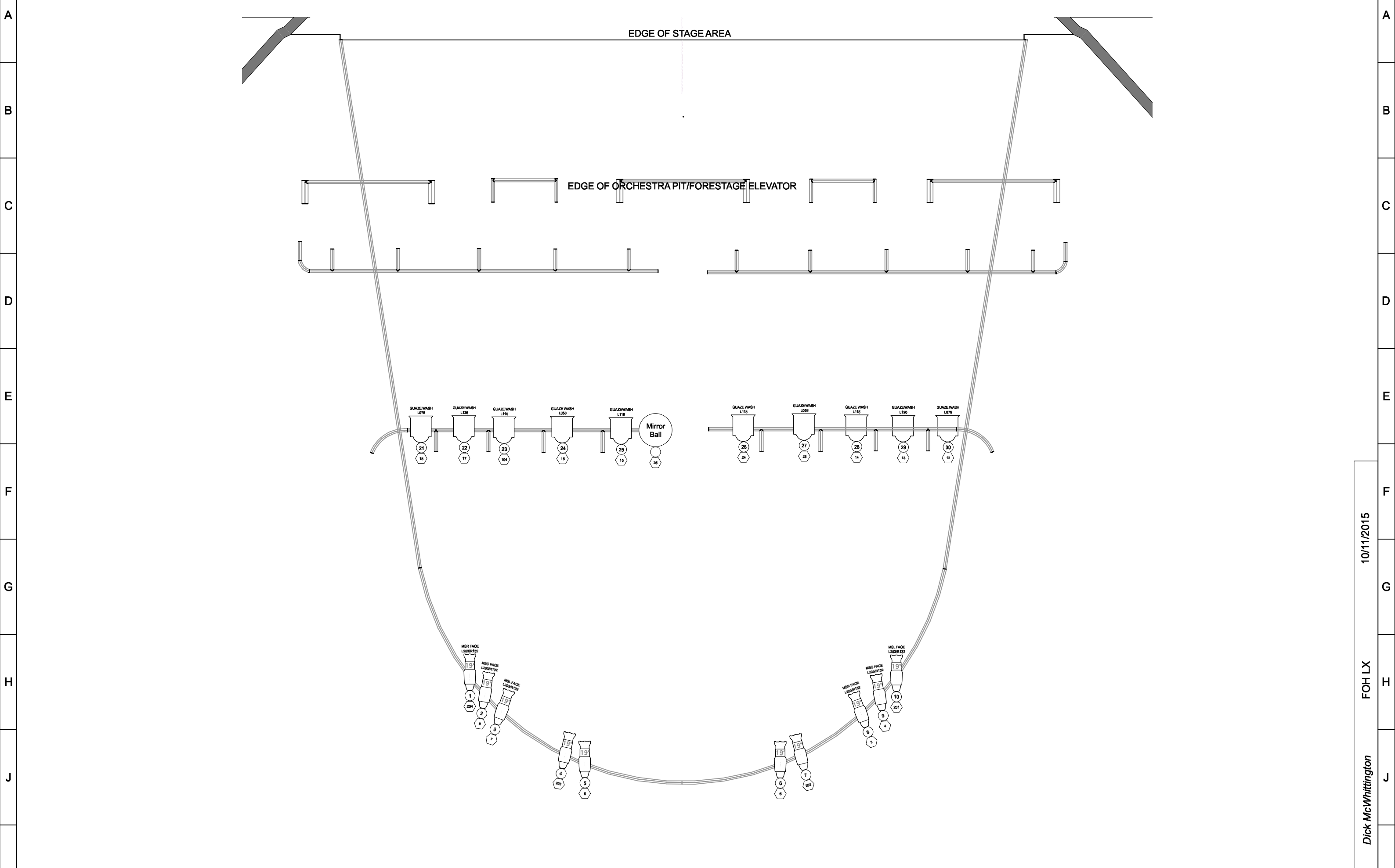
Booms/Ladders

Director	Alasdair	Designer	Robin Peoples	Drawing Number
Stage Manager	Kiri Newberry	LX Design	Simon Hayes	
TSM	Ryan Greenfield	Date	10/11/2015	3
Drawn By	Various	Scale	1:50 @ A3	


10/11/2015

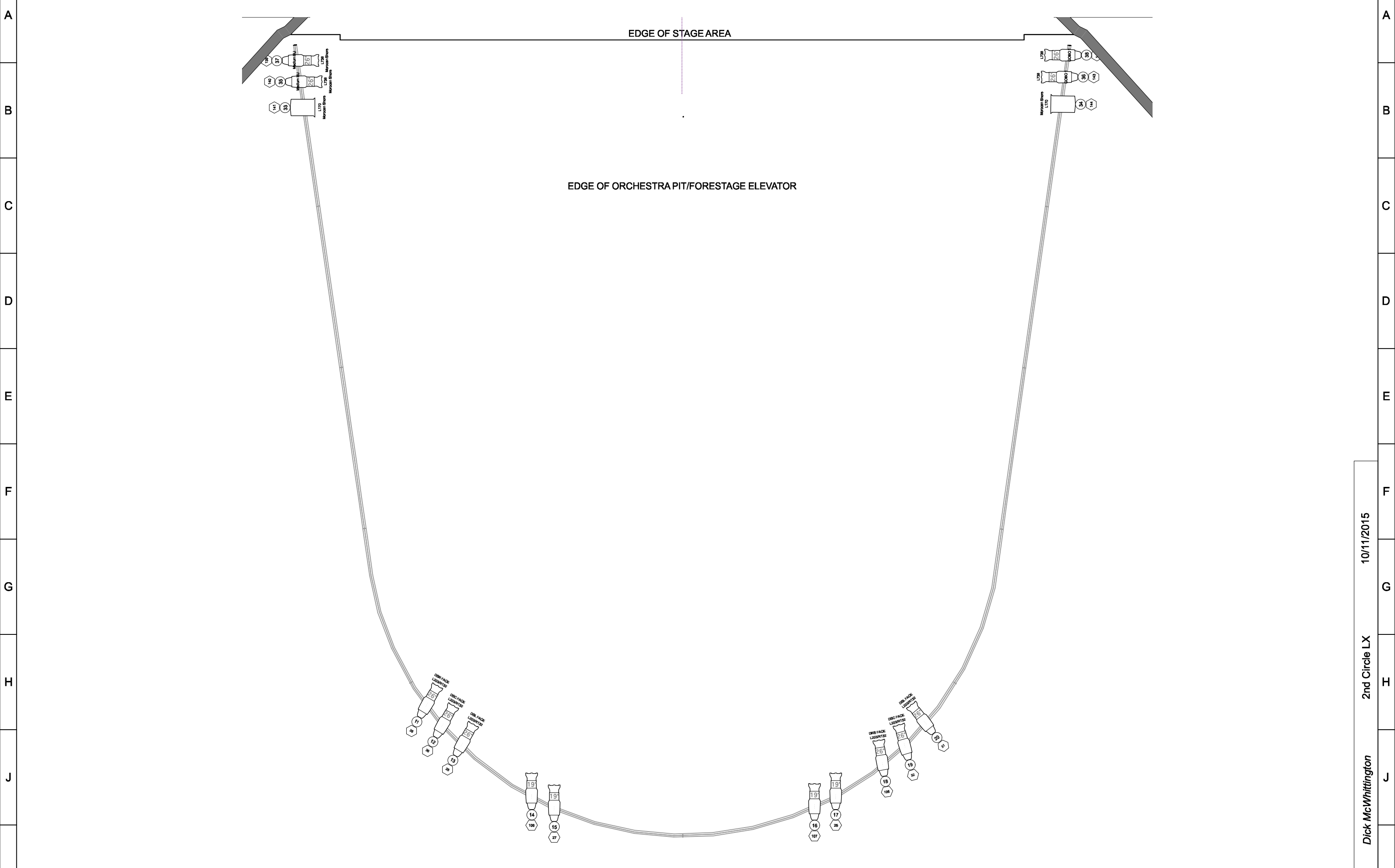
Booms/Ladders

Dick McWhittington




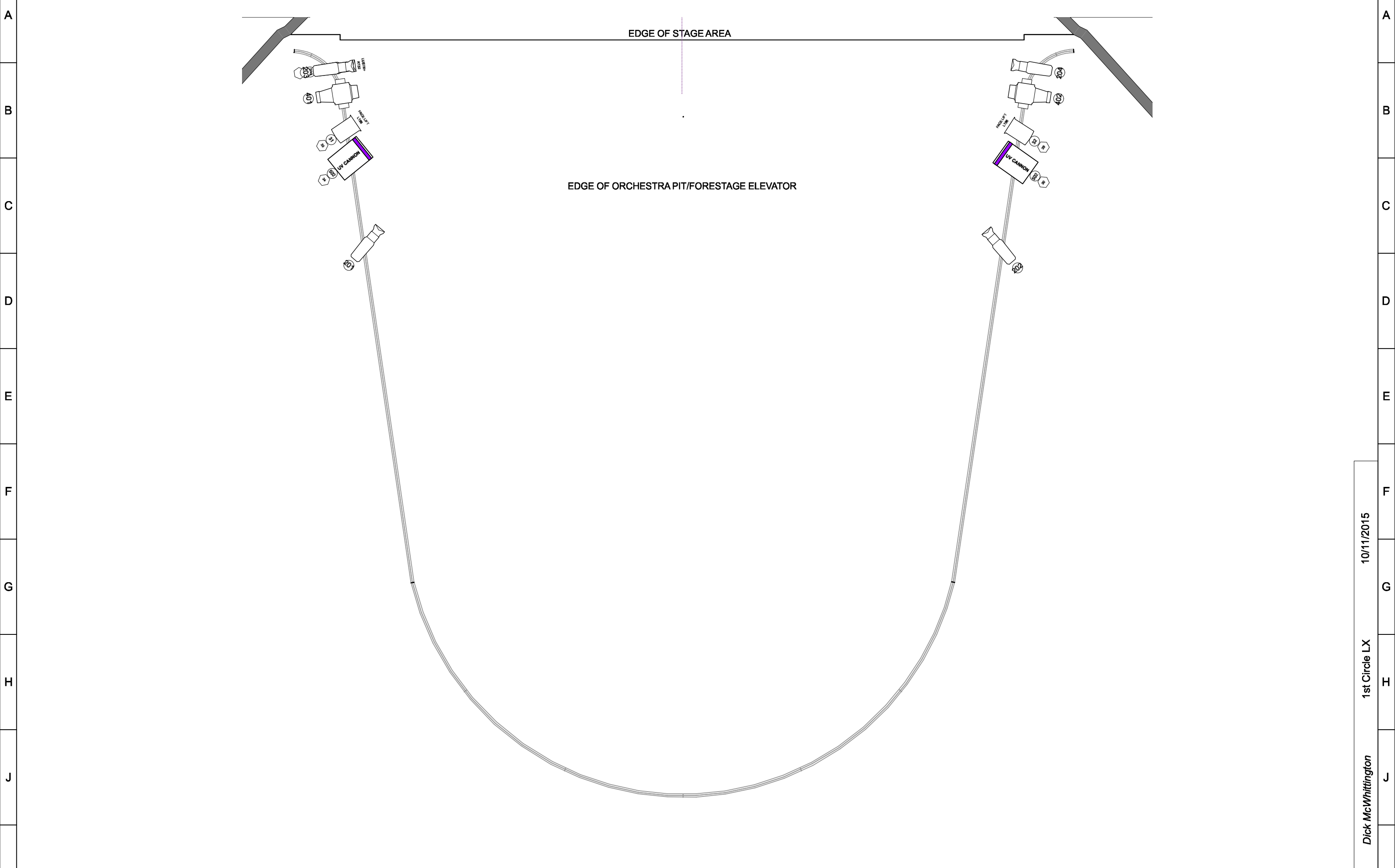
10/11/2015
FOH LX
Dick McWhittington


 Royal Conservatoire of Scotland	Dick McWhittington		Director	Alasdair	Designer	Robin Peoples	Drawing Number 4		
	FOH LX		Stage Manager	Kiri Newberry	LX Design	Simon Hayes			
			TSM	Ryan Greenfield	Date	10/11/2015		Scale	1:50 @ A3
			Drawn By	Various					



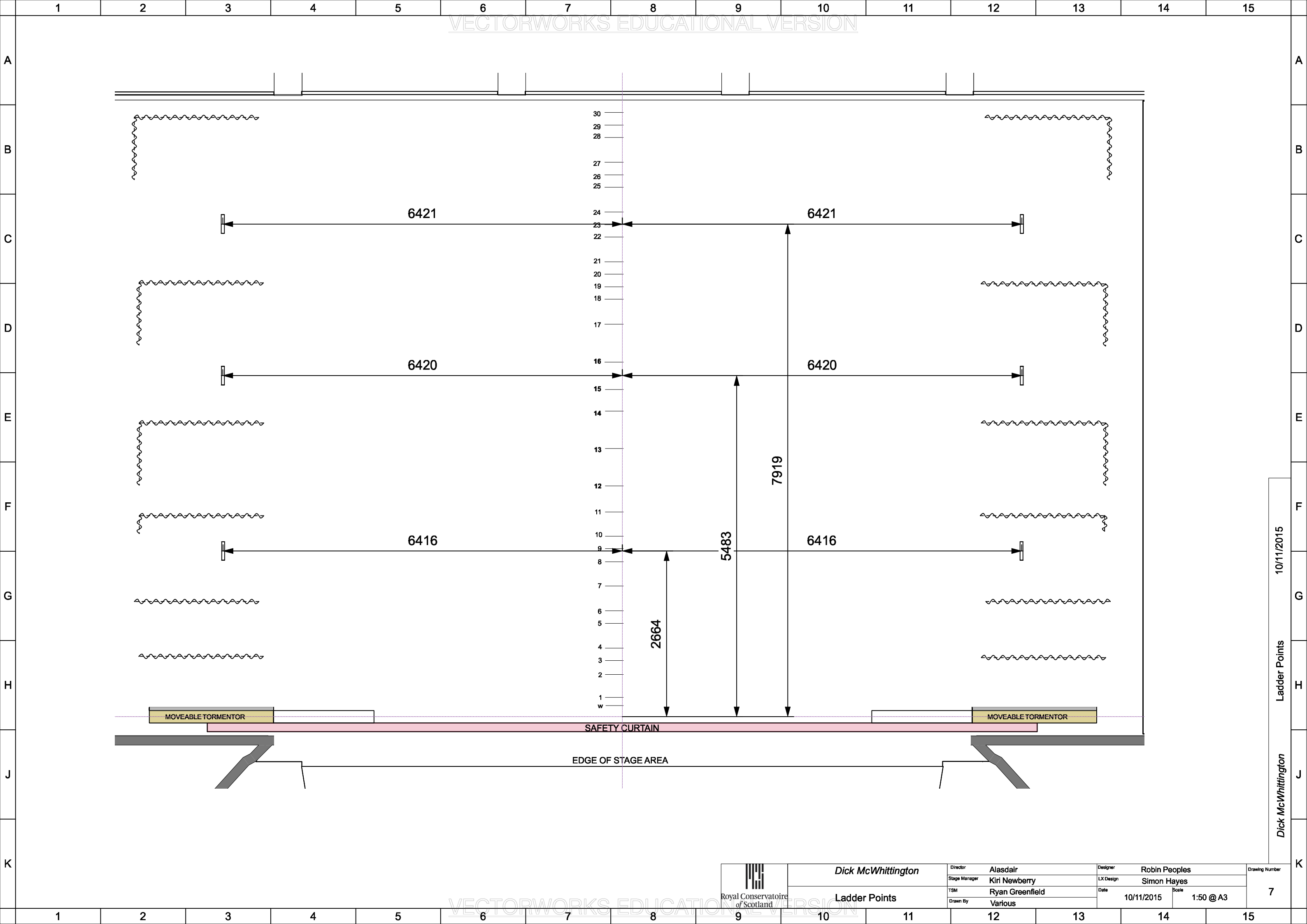
10/11/2015
 2nd Circle LX
 Dick McWhittington

 Royal Conservatoire of Scotland	Dick McWhittington		Director	Alasdair	Designer	Robin Peoples	Drawing Number 5		
	2nd Circle LX		Stage Manager	Kiri Newberry	LX Design	Simon Hayes			
			TSM	Ryan Greenfield	Date	10/11/2015		Scale	1:50 @ A3
			Drawn By	Various					




 Royal Conservatoire of Scotland	Dick McWhittington		Director	Alasdair	Designer	Robin Peoples	Drawing Number 6		
	1st Circle LX		Stage Manager	Kiri Newberry	LX Design	Simon Hayes			
			TSM	Ryan Greenfield	Date	10/11/2015		Scale	1:50 @ A3
			Drawn By	Various					

10/11/2015
 1st Circle LX
 Dick McWhittington



10/11/2015
Ladder Points
Dick McWhittington

 Royal Conservatoire of Scotland	Dick McWhittington		Director	Alasdair	Designer	Robin Peoples	Drawing Number	
	Ladder Points		Stage Manager	Kiri Newberry	LX Designer	Simon Hayes		
			TSM	Ryan Greenfield	Date	10/11/2015	Scale	7
			Drawn By	Various			1:50 @ A3	