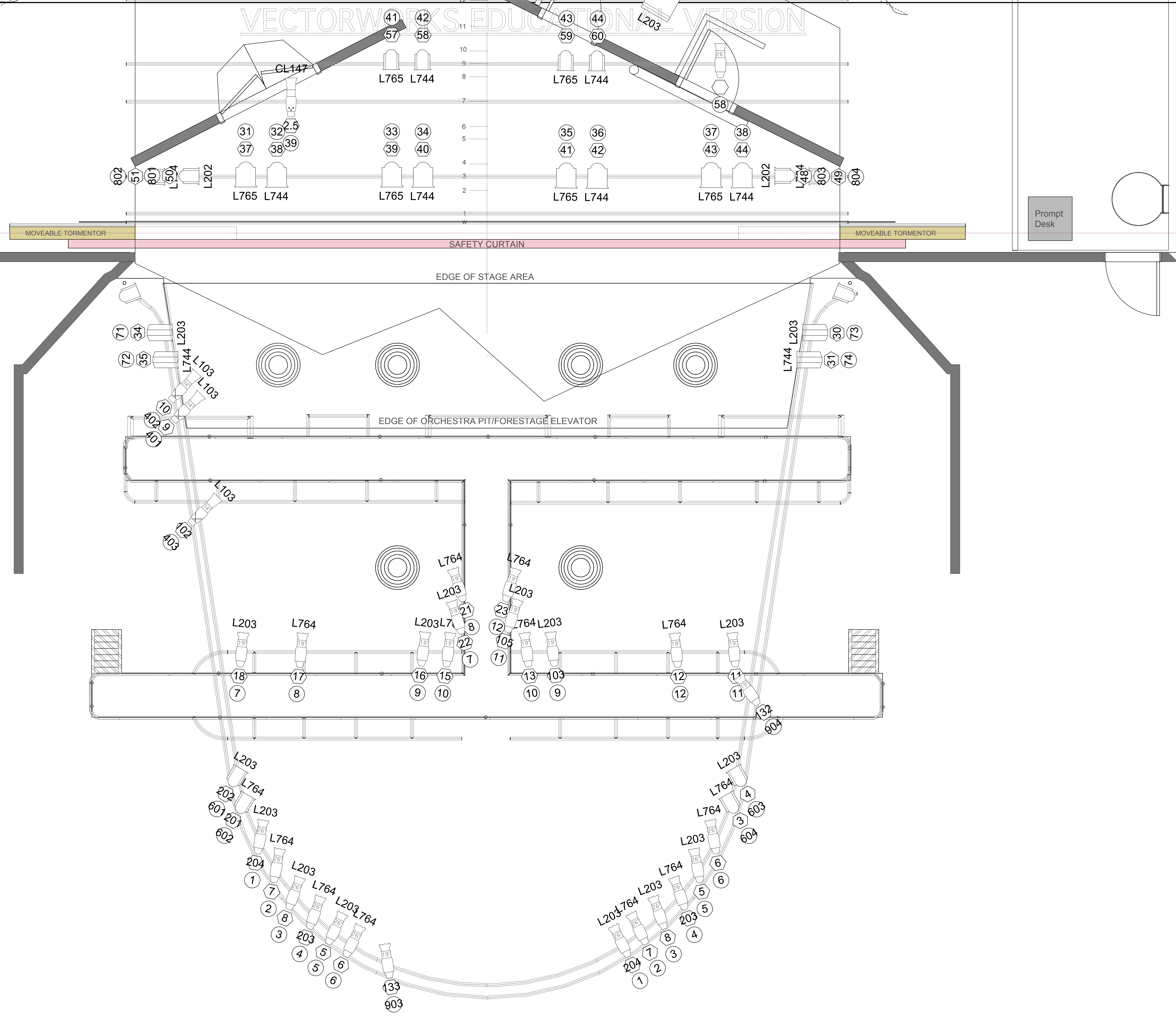


TECHNICAL DATA

Proscenium Opening	8 000mm - 11 200mm (w) x 7 180mm (h)
Setting Line to D/S of Rear Columns	10 000mm
Setting Line To Edge Of Stage	800mm
Setting Line To Edge of Forestage/Pit Elevator	3110mm
Depth of Forestage/Pit Elevator	2 310mm
Height of Stage from Stalls Level	910mm
Max Width of Stage	20 75 0mm
Width Between Fly Floors	16 550mm
Clearance To Underside of Fly Floors	6700mm
Height to Underside of Grid (Bar Travel)	15 500mm
Bar Width Counter Weights	11 500mm
Hemp Sets	10 650mm
SWL Counter Weights	400 Kg UDL
Hemp Sets	50Kg UDL
Get In Clearance Dimensions	Stage Left 2 250 (w) x 6 300 (h)
	Stage Right 2 350 (w) x 2 800 (h)



Lighting Key

	Selecon 1200 Fresnel @ 1.2kw	18 / 50
	Selecon 1200 PC @ 1.2kw	4 / 10
	ADB CH50 Fresnel @ 5kw	1 / 1
	CCT Starlette 2kW Fresnel @ 2kw	8 / 10
	Etc Source 4 14' @ 750w	3 / 4
	ETC Source-4 19' @ 750w	20 / 20
	ETC Source-4 26' @ 750w	13 / 20
	ETC Source-4 36' @ 750w	8 / 20
	ETC Source-4 50' @ 750w	13 / 10
	Source 4 Daylight LED @ 157w	2 / 6

08/11/2013

FoH LX Plan

Miseryguts



Miseryguts

FoH LX Plan

Director **Tony Cownie**
 Stage Manager **Ashley Kerray**
 TSM **Andrew McCabe**
 Drawn By **Oliver Gorman**

Designer **Rachel Macallan**
 LX Design **Oliver Gorman**
 Date **08/11/2013**
 Scale **1:25@A0**

Drawing Number **2**