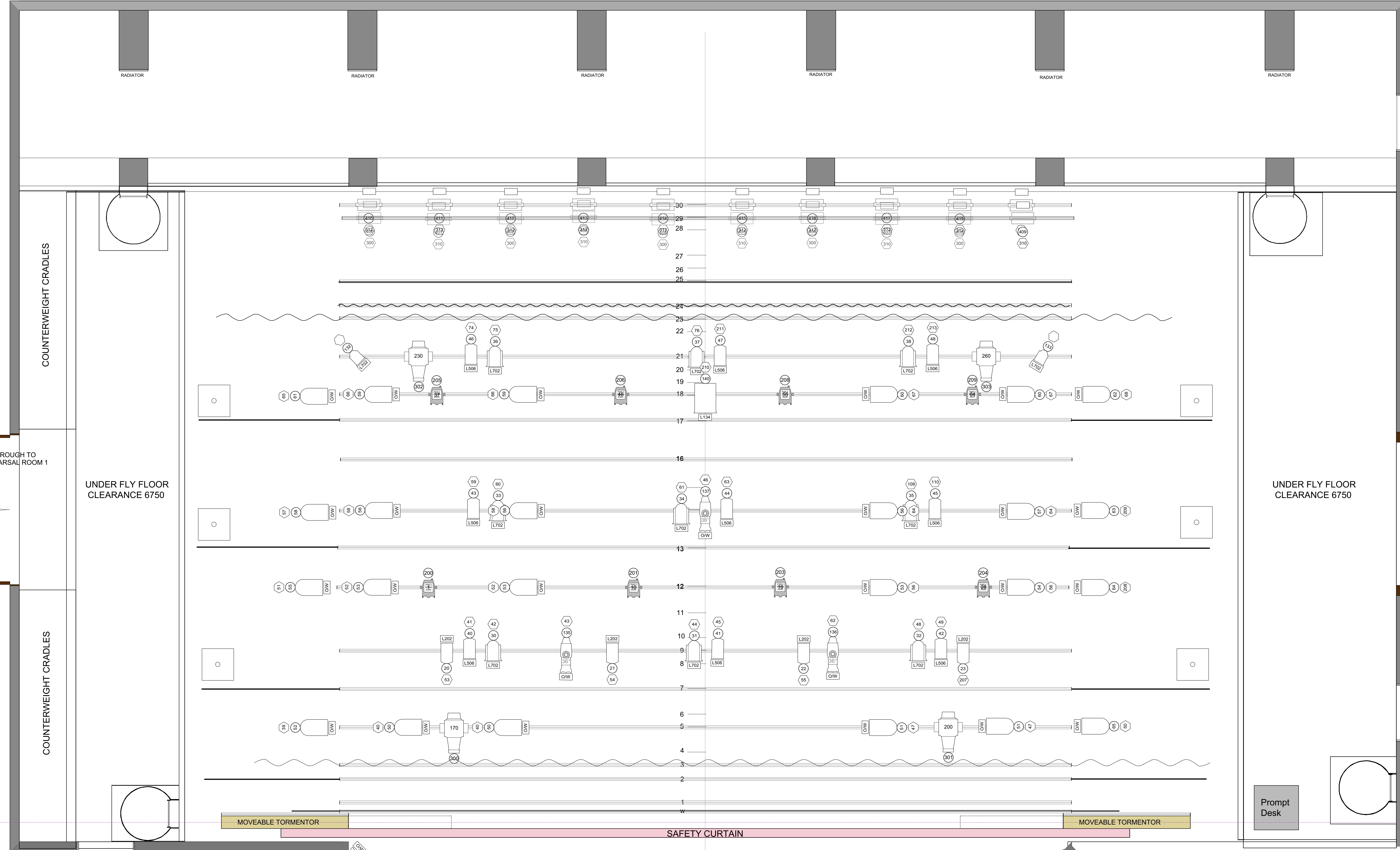


30
29
28
27
26
25
24
23
22
21
20
19
18
17
DP16
DP15
DP14
DP13
DP12
11
10
9
8
7
6
5
4
3
2
1
W



Light		
	PAR 2 RGBW Zoom - Hung	8
	PAR 62	24
	S4 Fresnel	20
	2k Fresnel	9
	Source 4 36°	19
	750w Fresnel	13
	5k Fresnel	1
	VL-1000 Tungsten dimmer	4

TECHNICAL DATA



General Notes

1. All PAR can lenses are CP62's.
2. All pipe ends are 1m long and will be on bars 9/12/14/18.
3. All bars will be roughly 7m off the stage, with only bar 18 being lower. Exact heights will be decided on rigging day.
4. The three 36 degree S4 specials all require an iris.
5. A birdie will be rigged centre of the first circle for dancer spotting.

- General Notes**
1. Checked and updated January 2012 (S.Macluskie)
 2. Class & Layer re-structure March 2012 (S.Cook)
 3. Substage Walk up trap added march 2012 (S.Cook)
 4. Setting Line Changed to 800mm from Front of Stage
 5. Tidied Up Auditorium Lines Dec 2012