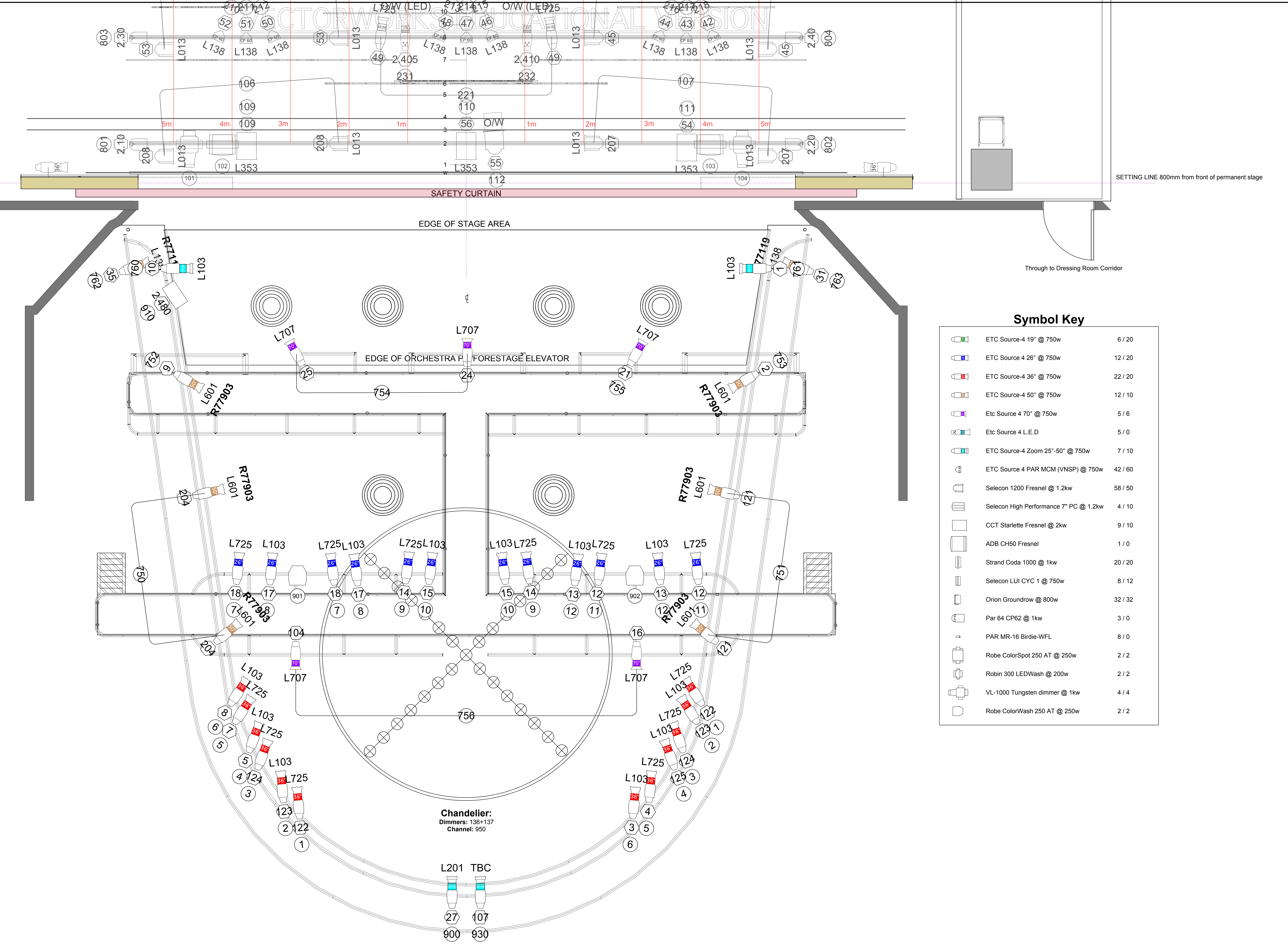


TECHNICAL DATA

Proscenium Opening	8 000mm - 11 200mm (w) x 7 180mm (h)
Setting Line To D/S of Rear Columns	10 000mm
Setting Line To Edge Of Stage	800mm
Setting Line To Edge of Forestage/Pit Elevator	3 110mm
Depth of Forestage/Pit Elevator	2 310mm
Height of Stage from Stalls Level	910mm
Max Width of Stage	20 750mm
Width Between Fly Floors	16 550mm
Clearance To Underside of Fly Floors	6 700mm
Height to Underside of Grid (Bar Travel)	15 500mm
Bar Width Counter Weights	11 500mm
Hemp Sets	10 650mm
SWL Counter Weights	400 Kg UDL
Hemp Sets	50Kg UDL
Get In Clearance Dimensions Stage Left	2 250 (w) x 6 300 (h)
Stage Right	2 350 (w) x 2 800 (h)



Symbol Key

[Symbol]	ETC Source-4 19" @ 750w	6 / 20
[Symbol]	ETC Source 4 26" @ 750w	12 / 20
[Symbol]	ETC Source-4 36" @ 750w	22 / 20
[Symbol]	ETC Source-4 50" @ 750w	12 / 10
[Symbol]	Etc Source 4 70" @ 750w	5 / 6
[Symbol]	Etc Source 4 L.E.D	5 / 0
[Symbol]	ETC Source-4 Zoom 25"-50" @ 750w	7 / 10
[Symbol]	ETC Source 4 PAR MCM (VNSP) @ 750w	42 / 60
[Symbol]	Selecon 1200 Fresnel @ 1.2kw	58 / 50
[Symbol]	Selecon High Performance 7" PC @ 1.2kw	4 / 10
[Symbol]	CCT Starlette Fresnel @ 2kw	9 / 10
[Symbol]	ADB CH50 Fresnel	1 / 0
[Symbol]	Strand Coda 1000 @ 1kw	20 / 20
[Symbol]	Selecon LUI CYC 1 @ 750w	8 / 12
[Symbol]	Orion Groundrow @ 800w	32 / 32
[Symbol]	Par 64 CP62 @ 1kw	3 / 0
[Symbol]	PAR MR-16 Birdie-WFL	8 / 0
[Symbol]	Robe ColorSpot 250 AT @ 250w	2 / 2
[Symbol]	Robin 300 LEDWash @ 200w	2 / 2
[Symbol]	VL-1000 Tungsten dimmer @ 1kw	4 / 4
[Symbol]	Robe ColorWash 250 AT @ 250w	2 / 2



Jack and the Beanstalk
FoH LX Plan

Director	Alasdair Hawthorne
Stage Manager	Natalie Wilson
TSM	Jenny Howes
Drawn By	Oliver Gorman

Designer	Robin Peoples	Drawing Number
LX Design	Oliver Gorman	
Date	17/11/13	Scale