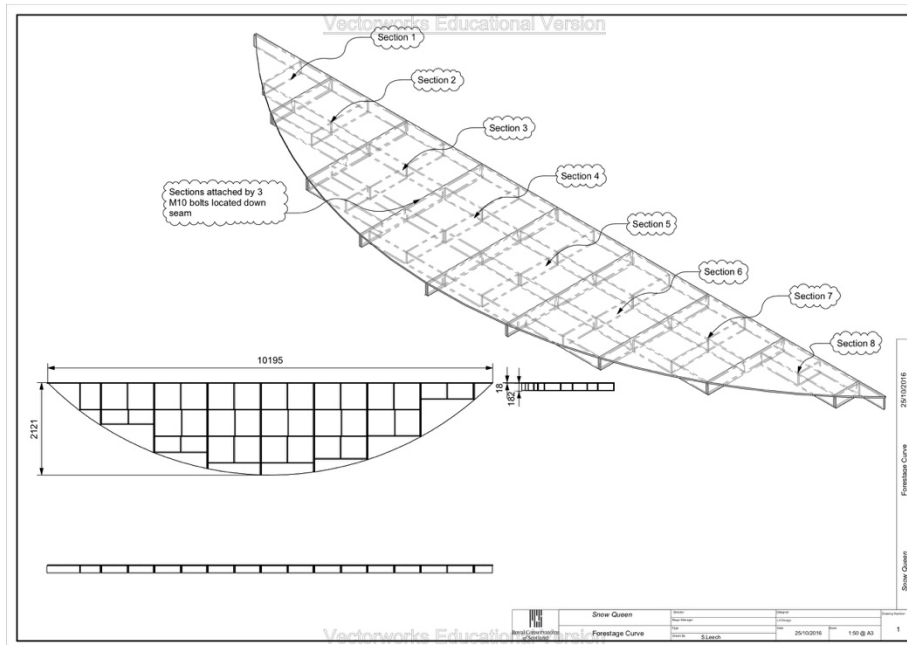


Forestage Curve Installation



Equipment:

- 27 – 1000 Scaff Legs
- 20 – M10 bolts
- 20 – M10 Washers
- 20 – M10 Nuts

Method:

Each section should be placed underside up in front of the pit lift platform. The legs should be fitted to each section before being placed onto the pit lift.

Lower the pit lift to the desired height and begin with section 8. Have two bodies positioned on the pit lift and have the crew on stage slide the section over the edge and allow the pit crew to tip the section and position it against the stage left pit wall.

The next section should then be placed in the pit and bolted using M10 bolts to the section that is already in place. This will stabilise the sections.

Work your way along making sure there is always a spare body to check that the sections are stable before work underneath is undertaken.

Follow SSOW and proper manual handling techniques to ensure everyone's safety and guarantee the procedure is completed properly.