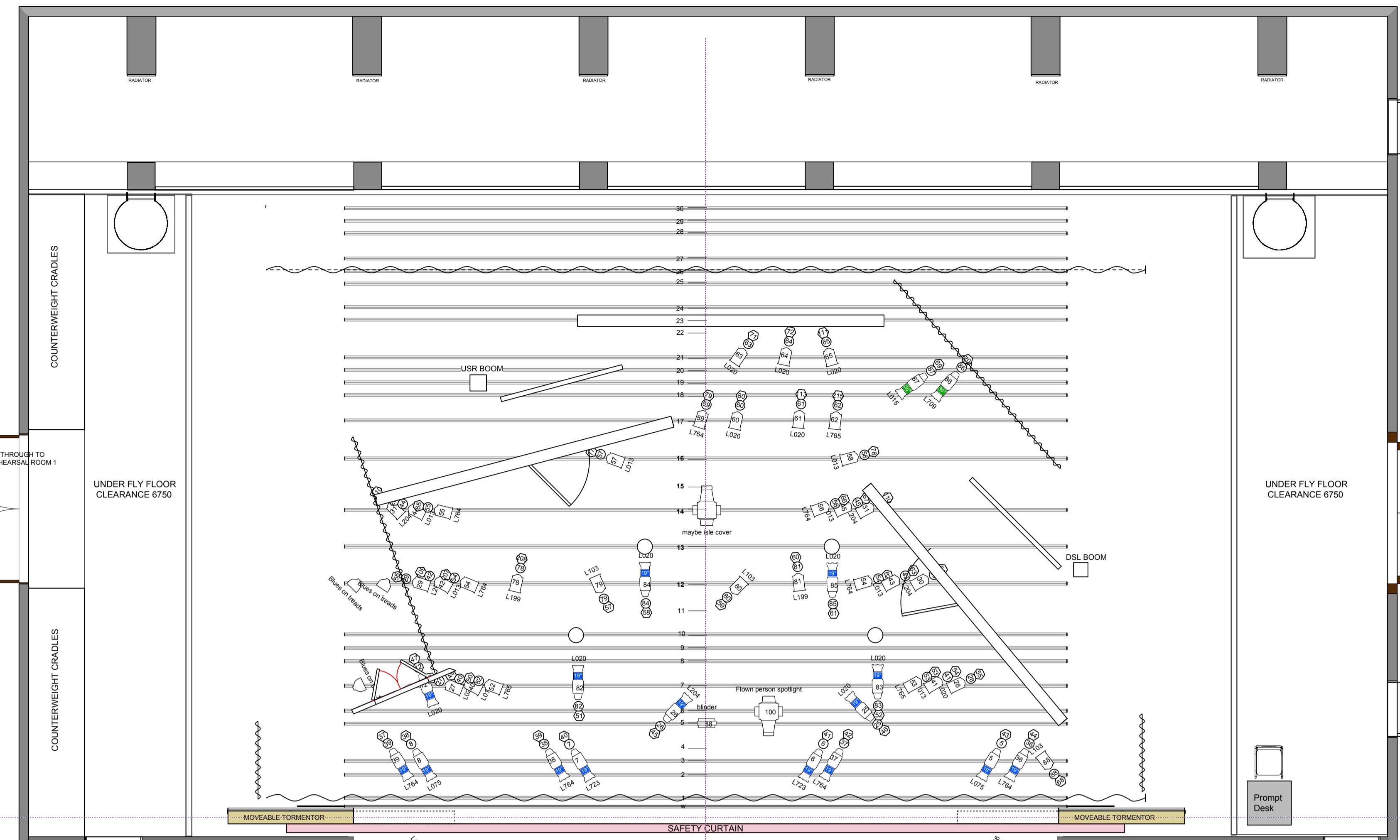
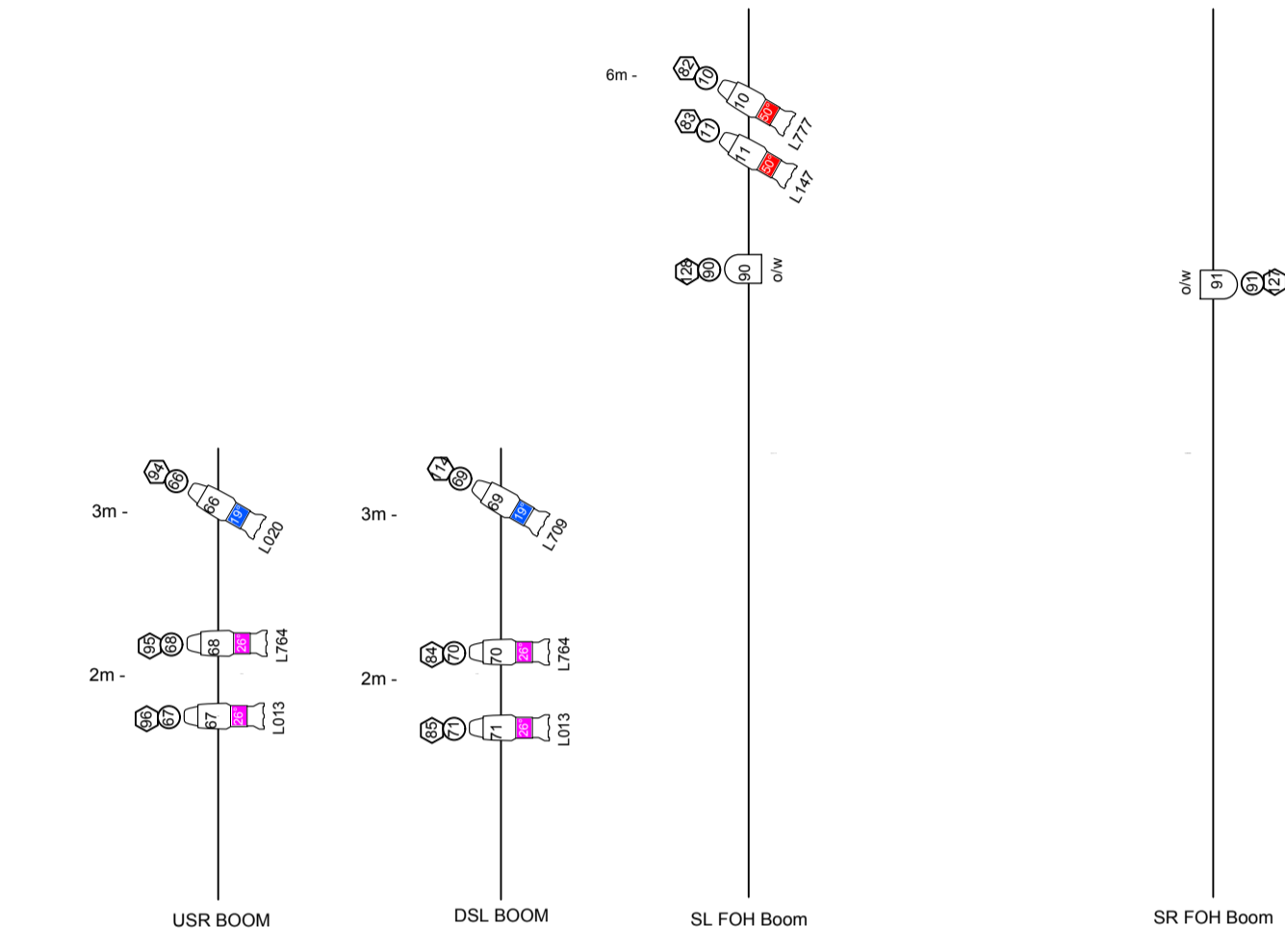


30
29
28
27
26
25
24
23
22
21
20
19
18
17
DP16
DP15
DP14
DP13
DP12
11
10
9
8
7
6
5
4
3
2
1
W



| Instruments | Num In Inventory | Used | Remaining |
|-------------------------|------------------|------|-----------|
| Source 4 36deg | 20 | 18 | 2 |
| Source 4 25deg | 20 | 16 | 4 |
| ETC Fresnel | 58 | 38 | 20 |
| Source 4 19deg | 20 | 17 | 3 |
| Rush par 2 | 10 | 3 | 7 |
| VL-1000 Tungsten dimmer | 3 | 2 | 1 |
| Source 4 50deg | 10 | 2 | 8 |
| Blinder | 1 | 1 | 0 |
| Parcan | 30 | 2 | 28 |

Color
Line Number
Channel
Dimmer



TECHNICAL DATA

| | |
|--|--------------------------------------|
| Proscenium Opening | 8 000mm - 11 200mm (w) x 7 180mm (h) |
| Setting Line To D/S of Rear Columns | 10 000mm |
| Setting Line To Edge Of Stage | 800mm |
| Setting Line To Edge of Forestage/Pit Elevator | 3110mm |
| Depth of Forestage/Pit Elevator | 2 310mm |
| Height of Stage from Stalls Level | 910mm |
| Max Width of Stage | 20 75 0mm |
| Width Between Fly Floors | 16 550mm |
| Clearance To Underside of Fly Floors | 6700mm |
| Height to Underside of Grid (Bar Travel) | 15 500mm |
| Bar Width Counter Weights | 11 500mm SWL 400kg UDL |
| Bar Width DP Counter Weights | 12 000mm SWL 370kg UDL |
| Bar Width Hemp Sets | 10 650mm SWL 53kg UDL |

Get In Clearance Dimensions

| | |
|-------------|-----------------------|
| Stage Left | 2 250 (w) x 6 300 (h) |
| Stage Right | 2 350 (w) x 2 800 (h) |

General Notes

1. Checked and updated January 2012 (S MacLuskie)
2. Class & Layer re-structure March 2012 (S Cook)
3. Substage Walk up trip added March 2012 (S Cook)
4. Setting Line Changed to 800mm from Front of Stage
5. Tided Up Auditorium Lines Dec 2012
6. Changed Setting & Centre Lines to "Guides"

2013 Updates

1. Added DSL & DSR Door Access
2. Changed Prosc Wall L&R
3. Removed all extra symbol folders to reduce file size
4. Updated SWL of DP to 370kg
5. Added Setting Line to main Sheet Layers

Steve MacLuskie 0141 270 8257
Simon Cook 0141 270 8103

| | | | | |
|--|--------------------------|---|-----------------------------|----------------------------|
| | The Hypochondriak | Director Hugh Hodgart & Ali De Souza | Designer Kirstin Rodger | Drawing Number 1 |
| | Floor Plan | Stage Manager Chrissie Huxford | LX Design Shannan Howard | |
| | | TSM Ian Smyth | Date 29/09/2014 | Scale 1:50@A1 |
| | | Drawn By Kirstin Rodger | | |

29/09/2014

Floor Plan

The Hypochondriak