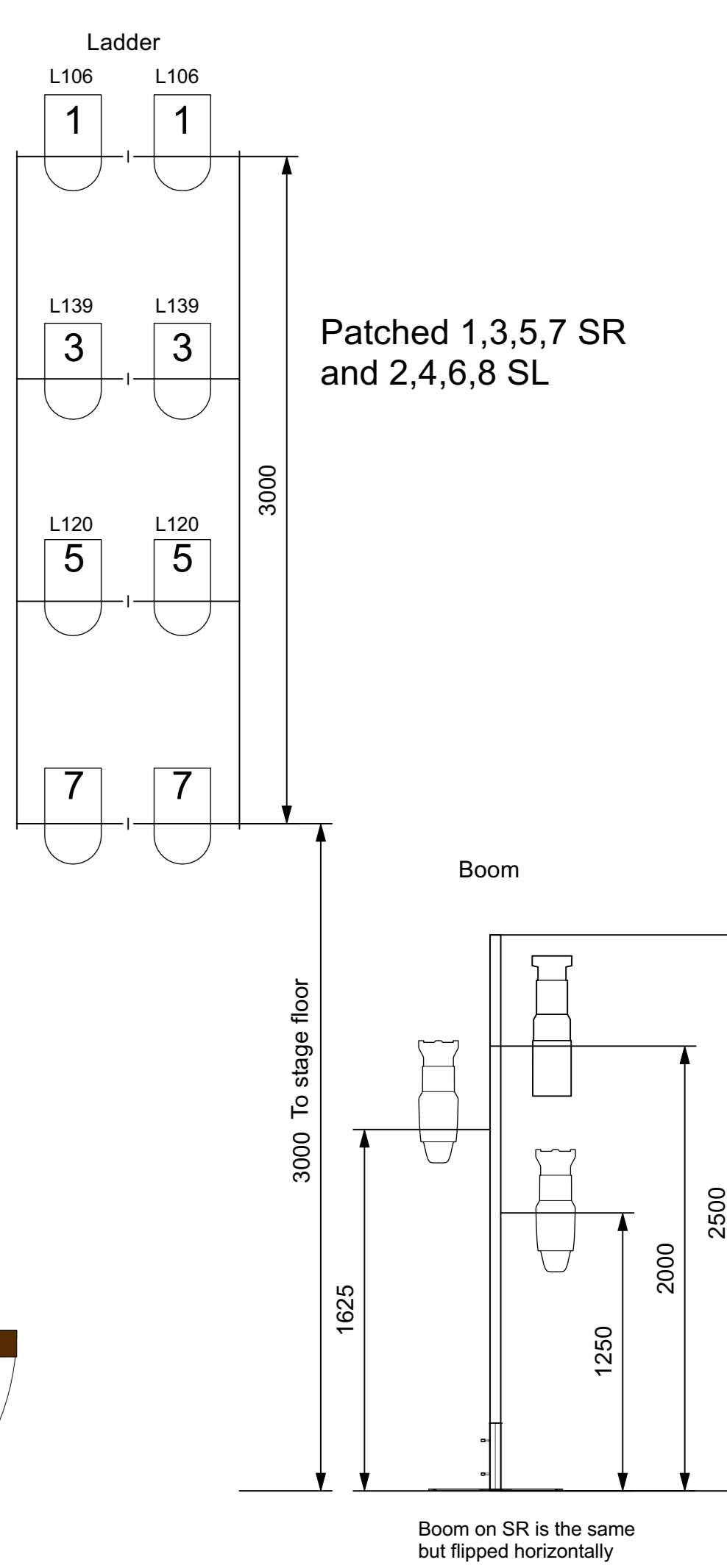


Example of Vertical Lights



**TECHNICAL DATA**

Recommended Proscenium Opening	9 200mm
Proscenium Opening	8 000mm - 11 200mm (w) x 7 180mm (h)
Setting Line to D/S of Rear Columns	10 000mm
Setting Line To Edge Of Stage	800mm
Setting Line To Edge of Forestage/Pit Elevator	3110mm
Depth of Forestage/Pit Elevator	2 310mm
Height of Stage from Stalls Level	910mm
Max Width of Stage	20 75 0mm
Width Between Fly Floors	16 550mm
Clearance To Underside of Fly Floors	6700mm
Height to Underside of Grid (Bar Travel)	15 500mm
Bar Width Counterweights	11 500mm SWL 400kg UDL / 45kg PL
Bar Width DP Counterweights	12 000mm SWL 370kg UDL / 50kg PL
Bar Width Hemp Sets	10 650mm SWL 50kg UDL

Get In Clearance Dimensions	Stage Left	2 250 (w) x 6 300 (h)
	Stage Right	2 350 (w) x 2 800 (h)

**Light**

	Altman PAR 64 MFL @ 1KW	16
	ETC CE Source4 19deg @ 575w 6.2kg	4
	ETC CE Source4 36deg @ 575w 6.2kg	4
	ETC CE Source4 50deg @ 575w 6.2kg	6
	ETC ColorSource Fresnel @ 160w	6
	ETC Source4 Fresnel @ 750w 6Kg	14
	ETC Source4 LEDSL 36deg @ 117w	4
	Martin RUSH PAR 2 RGBW Zoom @ 151w	8

**Moving Light**

	Martin MAC Encore Performance CLD @ 596w 31 kg	4
--	--	---

**Static Accessory**

No 20 Preview	C Clamp	30
---------------	---------	----

**Typical**

Color Channel

**Color Summary**

Color	Size	Count
L106	254mm	4
L120	254mm	4
L139	254mm	4
L711	159mm	2

30/10/22  
Floor Plan  
Inner Space 2022

		<b>Inner Space 2022</b>		Director	W.Sheils	Designer	E.Beaton	Drawing Number
		<b>Floor Plan</b>		Stage Manager	P.Soliz	LX Design	E.Beaton	1
				TSM	A.Souch	Date	30/10/22	
				Drawn By	S.Macluskie	Scale	1:25	