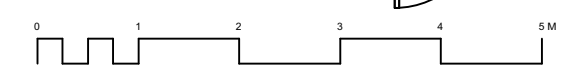
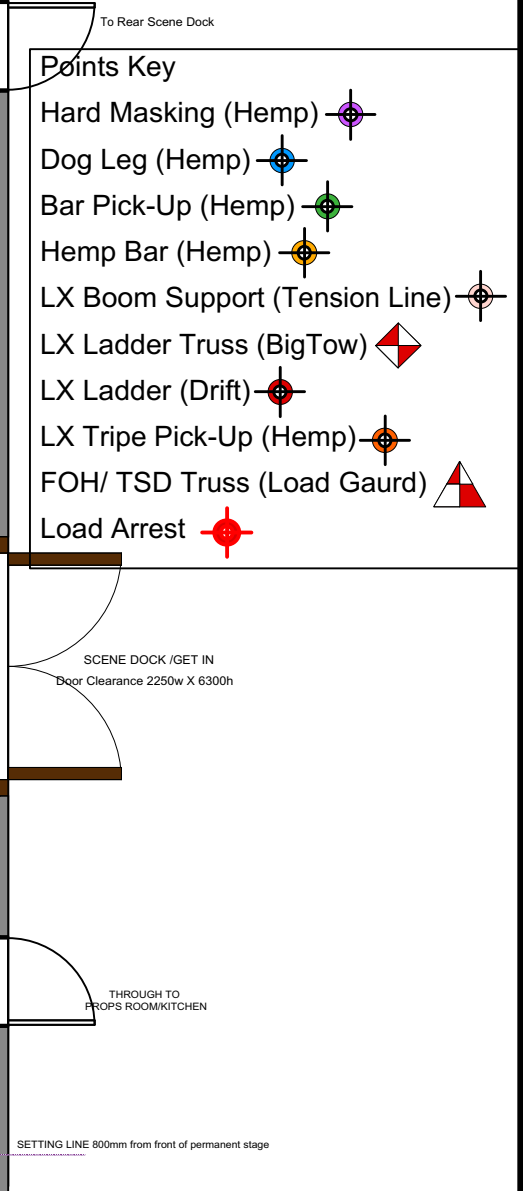
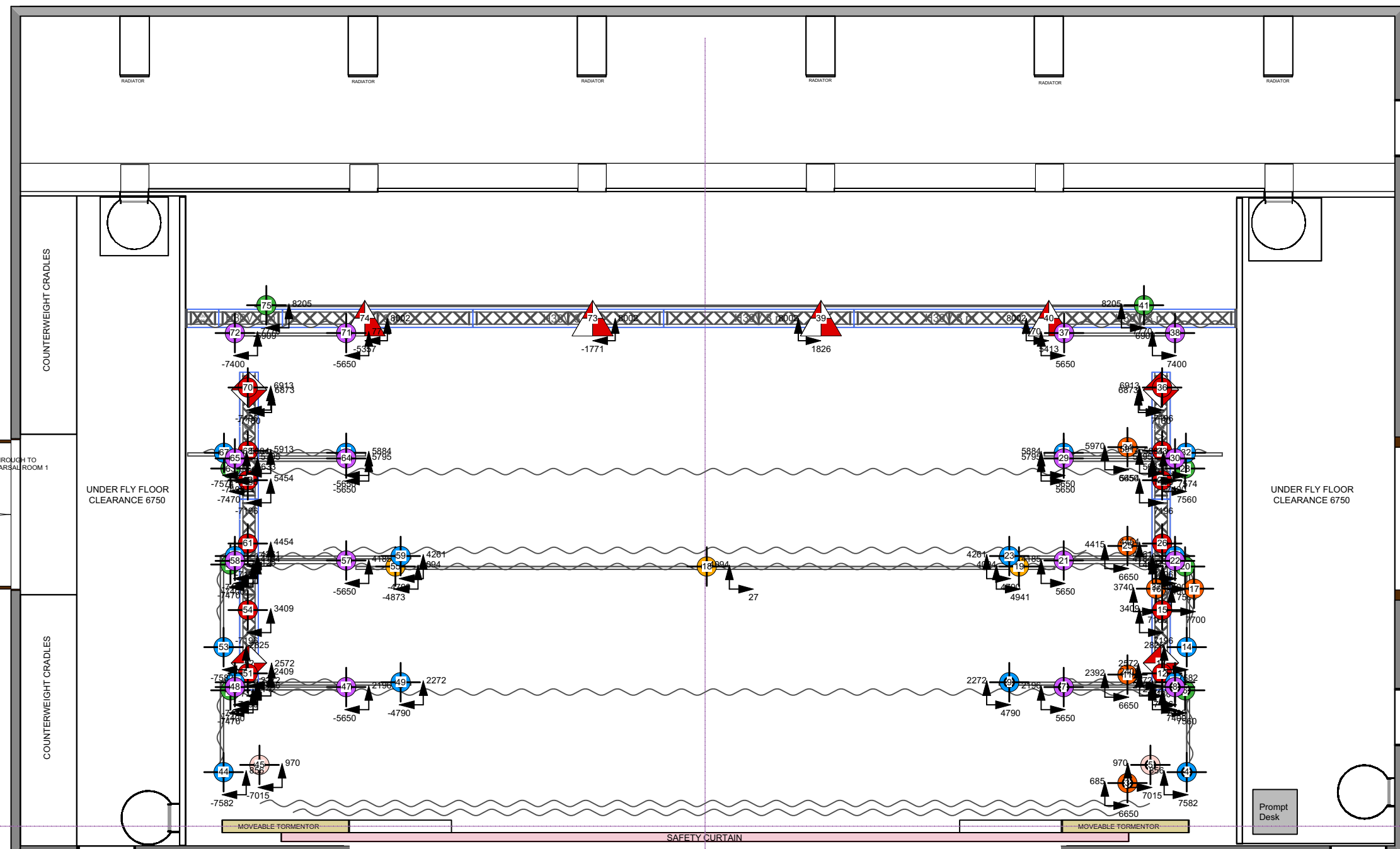


- LX 8
- 30
- 29
- 28
- 27
- 26
- 25
- 24
- BP Screen
- 23
- 22
- Aperture Black
- LX 7
- 21
- 20
- 19
- LX 6
- 17
- LX 5
- DP16
- Border
- LX 4
- DP15
- DP14
- Full Black
- Hemp Border
- LX 3
- DP12
- 11
- LX 2
- 10
- 9
- 8
- Border
- 7
- LX 1
- 4
- 3
- 2
- House Tabs
- House Border
- 1
- W

Points Key

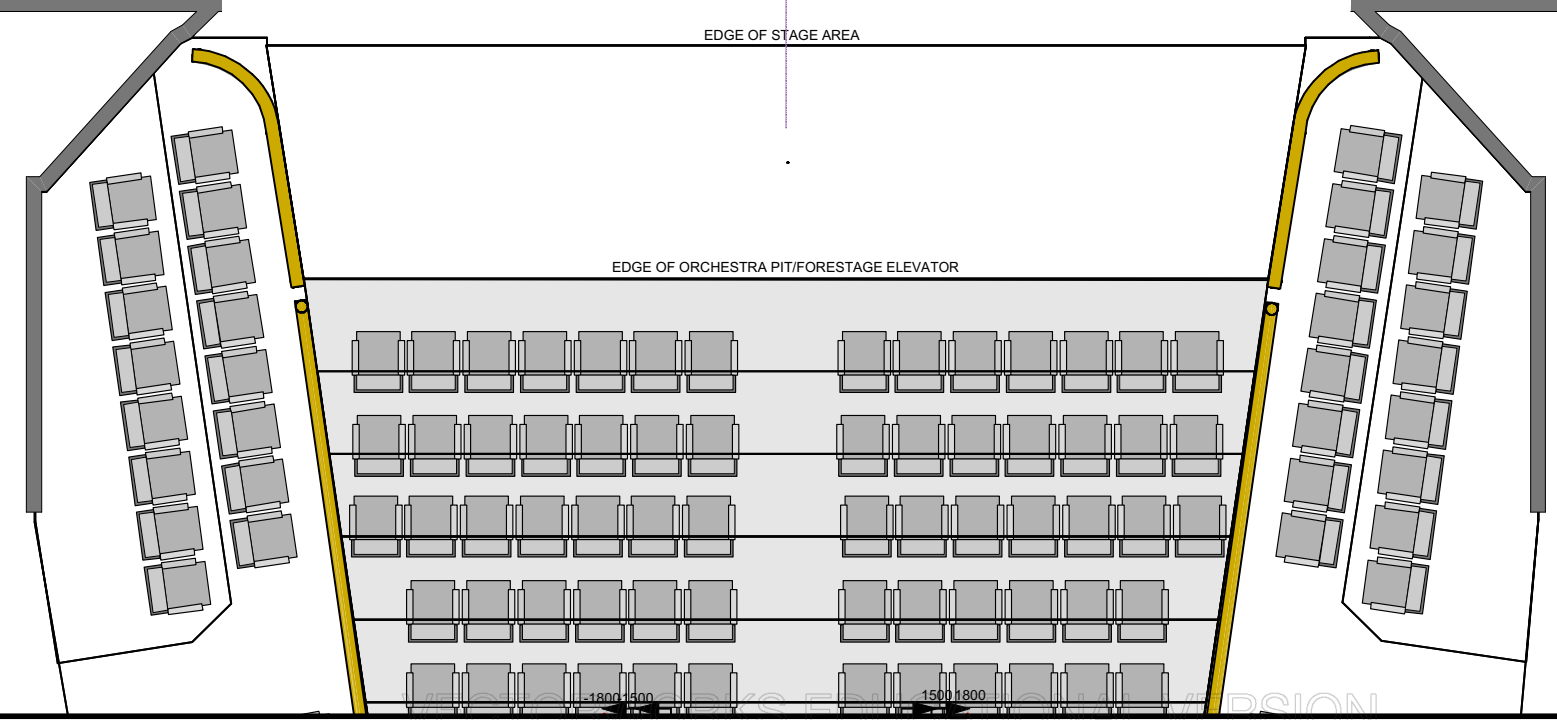
- Hard Masking (Hemp)
- Dog Leg (Hemp)
- Bar Pick-Up (Hemp)
- Hemp Bar (Hemp)
- LX Boom Support (Tension Line)
- LX Ladder Truss (BigTow)
- LX Ladder (Drift)
- LX Tripe Pick-Up (Hemp)
- FOH/ TSD Truss (Load Gaurd)
- Load Arrest



TECHNICAL DATA

Proscenium Opening	8 000mm - 11 200mm (w) x 7 180mm (h)
Setting Line to DIS of Rear Columns	10 000mm
Setting Line To Edge Of Stage	800mm
Setting Line To Edge of Forestage/Pit Elevator	3110mm
Depth of Forestage/Pit Elevator	2 310mm
Height of Stage from Stalls Level	910mm
Max Width of Stage	20 75 0mm
Width Between Fly Floors	16 550mm
Clearance To Underside of Fly Floors	6700mm
Height to Underside of Grid (Bar Travel)	15 500mm
Bar Width Counter Weights	11 500mm SWL 400kg UDL / 45kg PL
Bar Width DP Counter Weights	12 000mm SWL 370kg UDL / 50kg PL
Bar Width Hemp Sets	10 650mm SWL 50kg UDL

Get In Clearance Dimensions	Stage Left	2 250 (w) x 6 300 (h)
	Stage Right	2 350 (w) x 2 800 (h)



Updates
 14/8/18 Dimmer Info Formatting Fixed

Steve MacLuskie 0141 270 8257
 Simon Cook 0141 270 8108

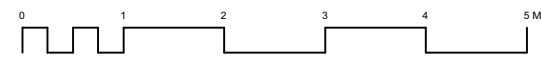
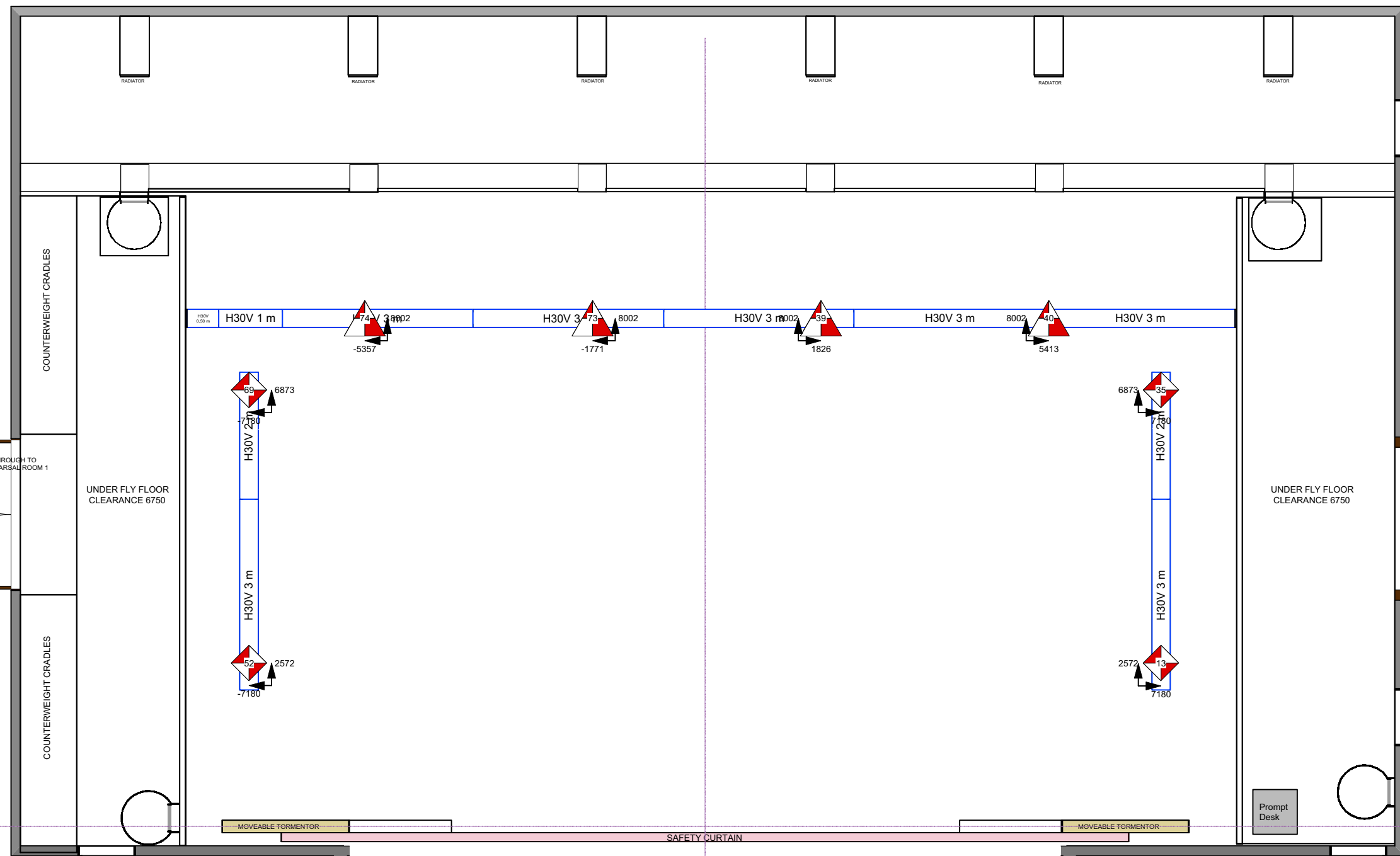
Show Name Covid Ballet 2020		
Reference 1:75@A3	Drawn By Darren Wilson	Date 04/06/20
CAD File Name Points Plan		

- LX 8
- 30
- 29
- 28
- 27
- 26
- 25
- 24
- BP Screen
- 23
- 22
- Aperture Black
- LX 7
- 21
- 20
- 19
- LX 6
- 18
- 17
- LX 5
- DP16
- Border
- LX 4
- DP15
- DP14
- Full Black
- Hemp Border
- LX 3
- DP13
- DP12
- 11
- LX 2
- 10
- 9
- 8
- Border
- 7
- 6
- 5
- LX 1
- 4
- 3
- 2
- House Tabs
- House Border
- 1
- 0

To Rear Scene Dock

Points Key

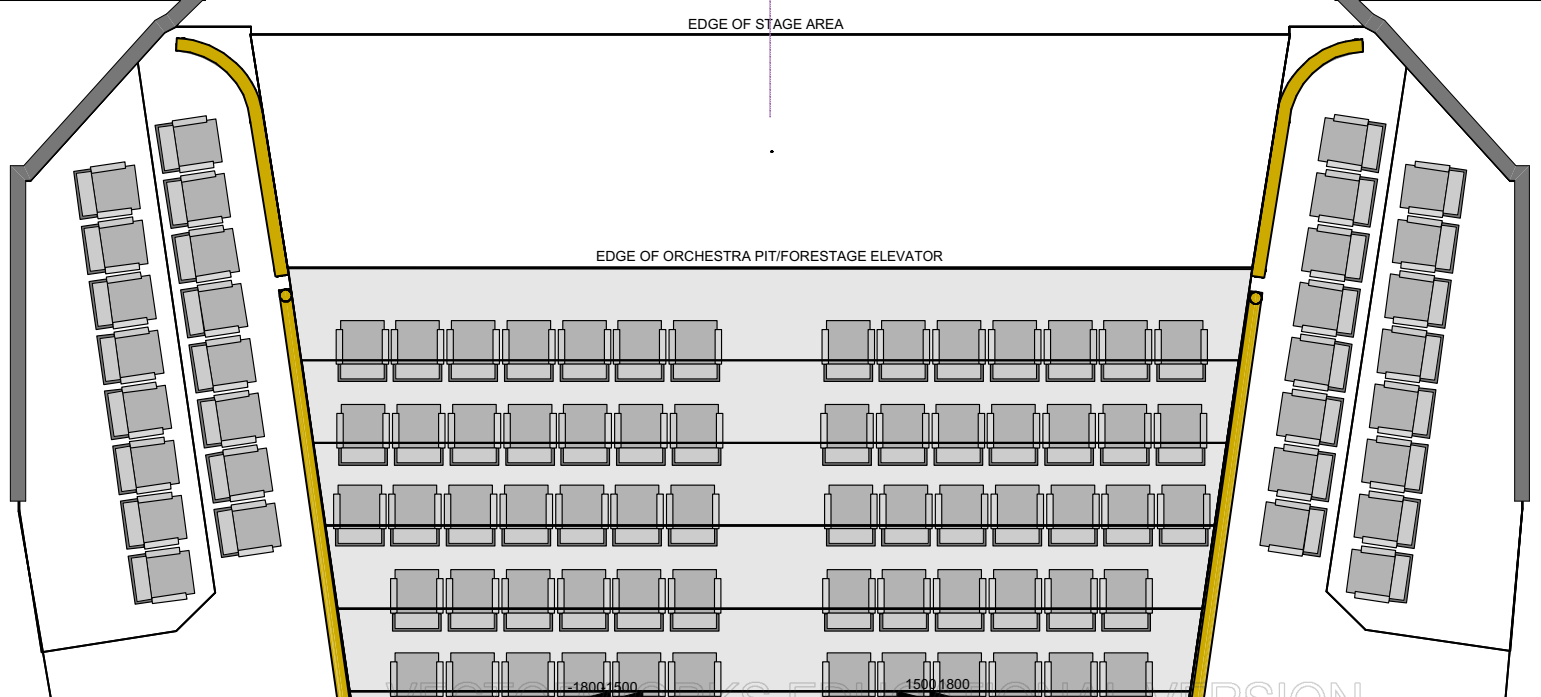
- Hard Masking (Hemp)
- Dog Leg (Hemp)
- Bar Pick-Up (Hemp)
- Hemp Bar (Hemp)
- LX Boom Support (Tension Line)
- LX Ladder Truss (BigTow)
- LX Ladder (Drift)
- LX Tripe Pick-Up (Hemp)
- FOH/ TSD Truss (Load Gaurd)
- Load Arrest



TECHNICAL DATA

Proscenium Opening	8 000mm - 11 200mm (w) x 7 180mm (h)
Setting Line to D/S of Rear Columns	10 000mm
Setting Line To Edge Of Stage	800mm
Setting Line To Edge of Forestage/Pit Elevator	3110mm
Depth of Forestage/Pit Elevator	2 310mm
Height of Stage from Stalls Level	910mm
Max Width of Stage	20 75 0mm
Width Between Fly Floors	16 550mm
Clearance To Underside of Fly Floors	6700mm
Height to Underside of Grid (Bar Travel)	15 500mm
Bar Width Counter Weights	11 500mm SWL 400kg UDL / 45kg PL
Bar Width DP Counter Weights	12 000mm SWL 370kg UDL / 50kg PL
Bar Width Hemp Sets	10 650mm SWL 50kg UDL

Get In Clearance Dimensions	Stage Left	2 250 (w) x 6 300 (h)
	Stage Right	2 350 (w) x 2 800 (h)



Updates
 14/8/18 Dimmer Info Formatting Fixed

Steve Macluskie 0141 270 8257
 Simon Cook 0141 270 8108

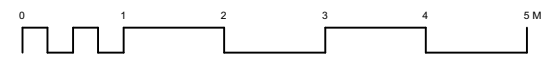
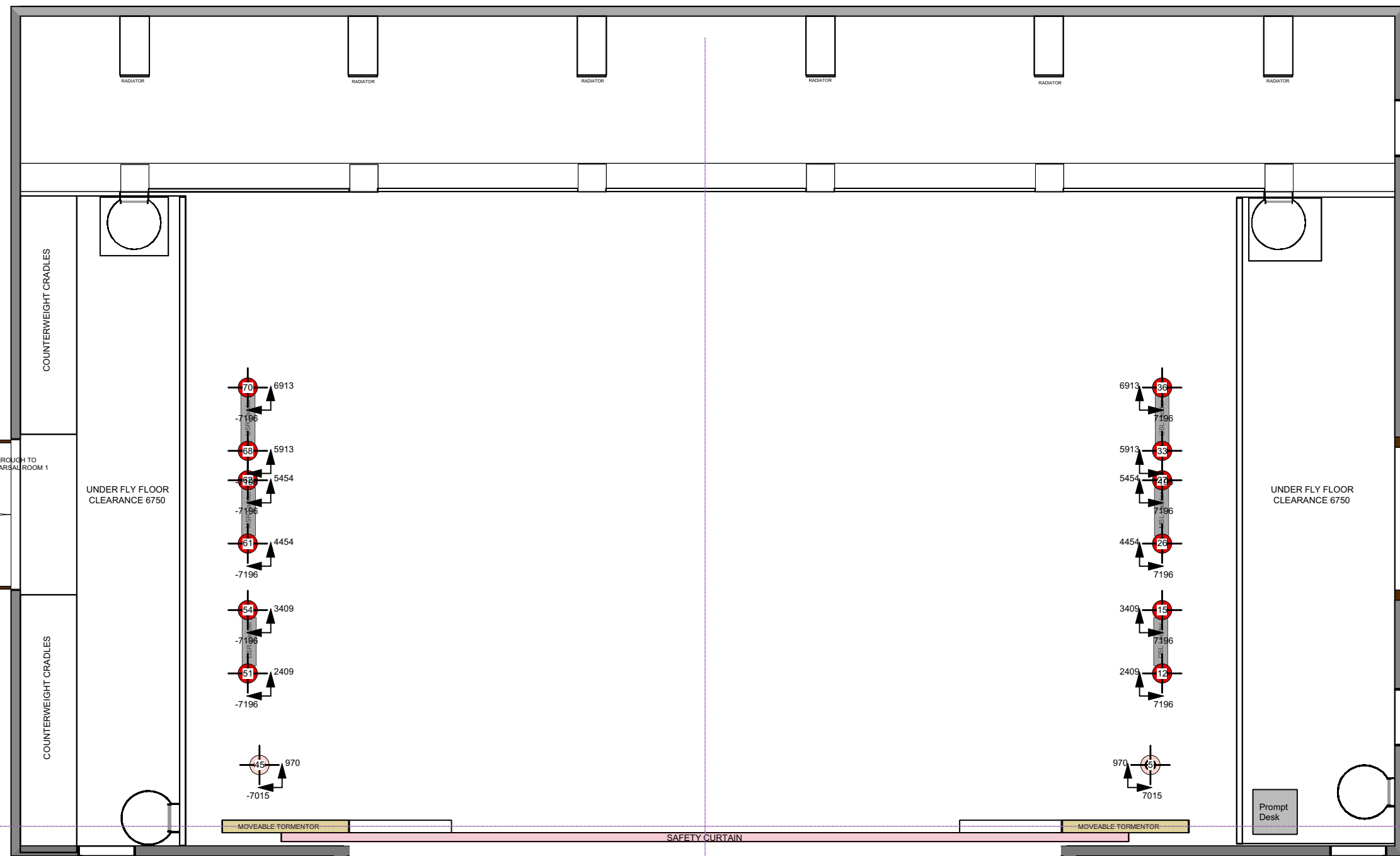
Show Name Covid Ballet 2020		
Reference 1:75@A3	Drawn By Darren Wilson	Date 04/06/20
CAD File Name Winch/ Hoist Points		

- LX 8
- 30
- 29
- 28
- 27
- 26
- 25
- 24 BP Screen
- 23
- 22
- 21 Aperture Black
- 20 LX 7
- 19
- 18
- 17 LX 6
- DP16 LX 5
- DP15 Border
- DP14 LX 4
- DP13 Full Black
- H1 Hemp Border
- DP12 LX 3
- 11
- 10 LX 2
- 9
- 8
- 7 Border
- 6
- 5
- 4 LX 1
- 3
- 2
- 1 House Tabs
- House Border

To Rear Scene Dock

Points Key

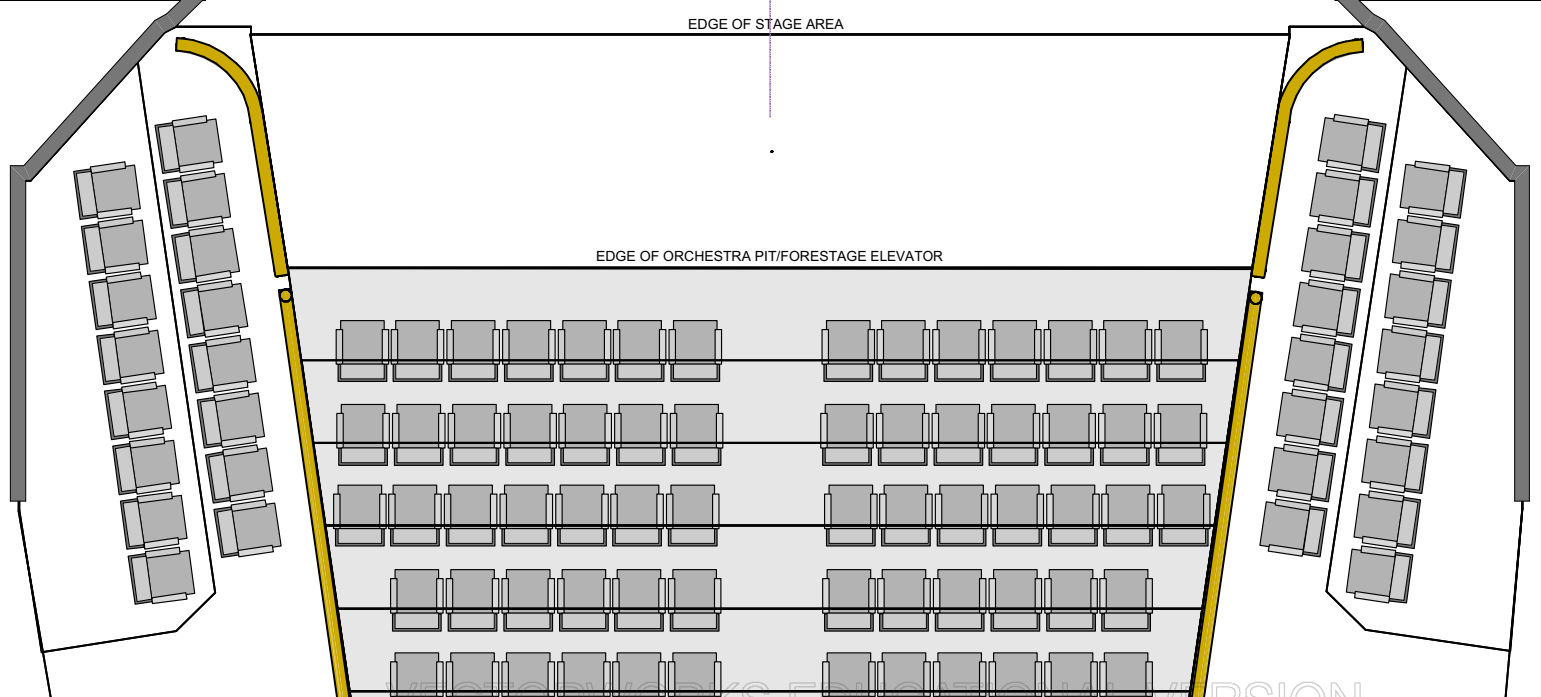
- Hard Masking (Hemp)
- Dog Leg (Hemp)
- Bar Pick-Up (Hemp)
- Hemp Bar (Hemp)
- LX Boom Support (Tension Line)
- LX Ladder Truss (BigTow)
- LX Ladder (Drift)
- LX Tripe Pick-Up (Hemp)
- FOH/ TSD Truss (Load Gaurd)
- Load Arrest



TECHNICAL DATA

Proscenium Opening	8 000mm - 11 200mm (w) x 7 180mm (h)
Setting Line to DIS of Rear Columns	10 000mm
Setting Line To Edge Of Stage	800mm
Setting Line To Edge of Forestage/Pit Elevator	3110mm
Depth of Forestage/Pit Elevator	2 310mm
Height of Stage from Stalls Level	910mm
Max Width of Stage	20 75 0mm
Width Between Fly Floors	16 550mm
Clearance To Underside of Fly Floors	6700mm
Height to Underside of Grid (Bar Travel)	15 500mm
Bar Width Counter Weights	11 500mm SWL 400kg UDL / 45kg PL
Bar Width DP Counter Weights	12 000mm SWL 370kg UDL / 50kg PL
Bar Width Hemp Sets	10 650mm SWL 50kg UDL

Get In Clearance Dimensions	Stage Left	2 250 (w) x 6 300 (h)
	Stage Right	2 350 (w) x 2 800 (h)



Updates
 14/8/18 Dimmer Info Formatting Fixed

Steve Macluskie 0141 270 8257
 Simon Cook 0141 270 8108

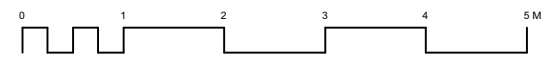
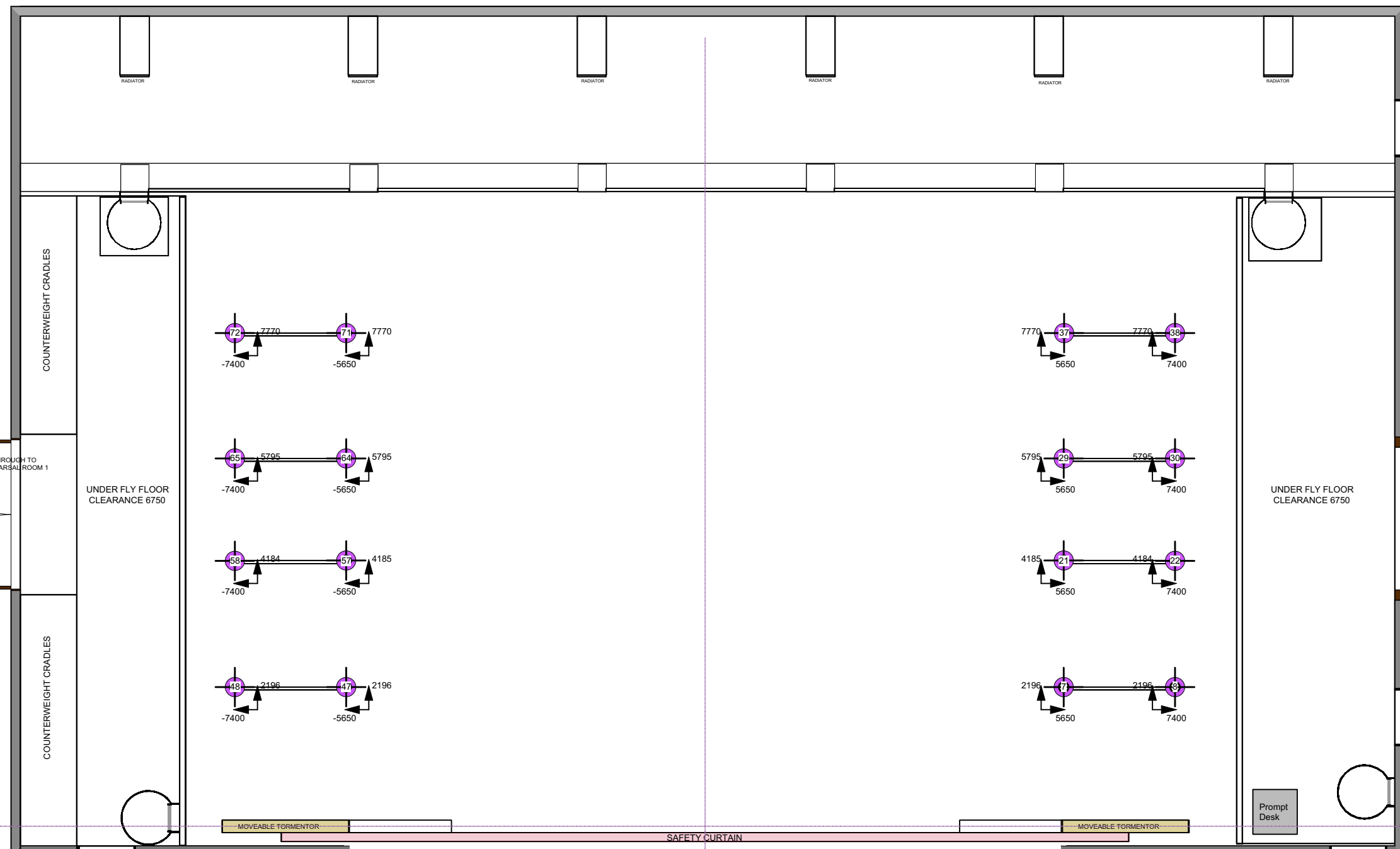
Show Name Covid Ballet 2020		
Reference 1:75@A3	Drawn By Darren Wilson	Date 29/05/20
CAD File Name LX Ladder/ Boom Support Points		

- LX 8
- 30
- 29
- 28
- 27
- 26
- 25
- BP Screen
- 24
- 23
- 22
- Aperture Black
- LX 7
- 21
- 20
- 19
- 18
- LX 6
- 17
- LX 5
- DP16
- Border
- LX 4
- DP15
- DP14
- Full Black
- Hemp Border
- LX 3
- DP12
- 11
- LX 2
- 10
- 9
- 8
- Border
- 7
- LX 1
- 4
- 3
- 2
- House Tabs
- House Border
- W

To Rear Scene Dock

Points Key

- Hard Masking (Hemp)
- Dog Leg (Hemp)
- Bar Pick-Up (Hemp)
- Hemp Bar (Hemp)
- LX Boom Support (Tension Line)
- LX Ladder Truss (BigTow)
- LX Ladder (Drift)
- LX Tripe Pick-Up (Hemp)
- FOH/ TSD Truss (Load Gaurd)
- Load Arrest



TECHNICAL DATA

Proscenium Opening	8 000mm - 11 200mm (w) x 7 180mm (h)
Setting Line to DIS of Rear Columns	10 000mm
Setting Line To Edge Of Stage	800mm
Setting Line To Edge of Forestage/Pit Elevator	3110mm
Depth of Forestage/Pit Elevator	2 310mm
Height of Stage from Stalls Level	910mm
Max Width of Stage	20 75 0mm
Width Between Fly Floors	16 550mm
Clearance To Underside of Fly Floors	6700mm
Height to Underside of Grid (Bar Travel)	15 500mm
Bar Width Counter Weights	11 500mm SWL 400kg UDL / 45kg PL
Bar Width DP Counter Weights	12 000mm SWL 370kg UDL / 50kg PL
Bar Width Hemp Sets	10 650mm SWL 50kg UDL

Get In Clearance Dimensions	Stage Left	2 250 (w) x 6 300 (h)
	Stage Right	2 350 (w) x 2 800 (h)

Updates
 14/8/18 Dimmer Info Formatting Fixed

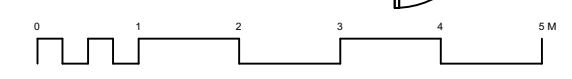
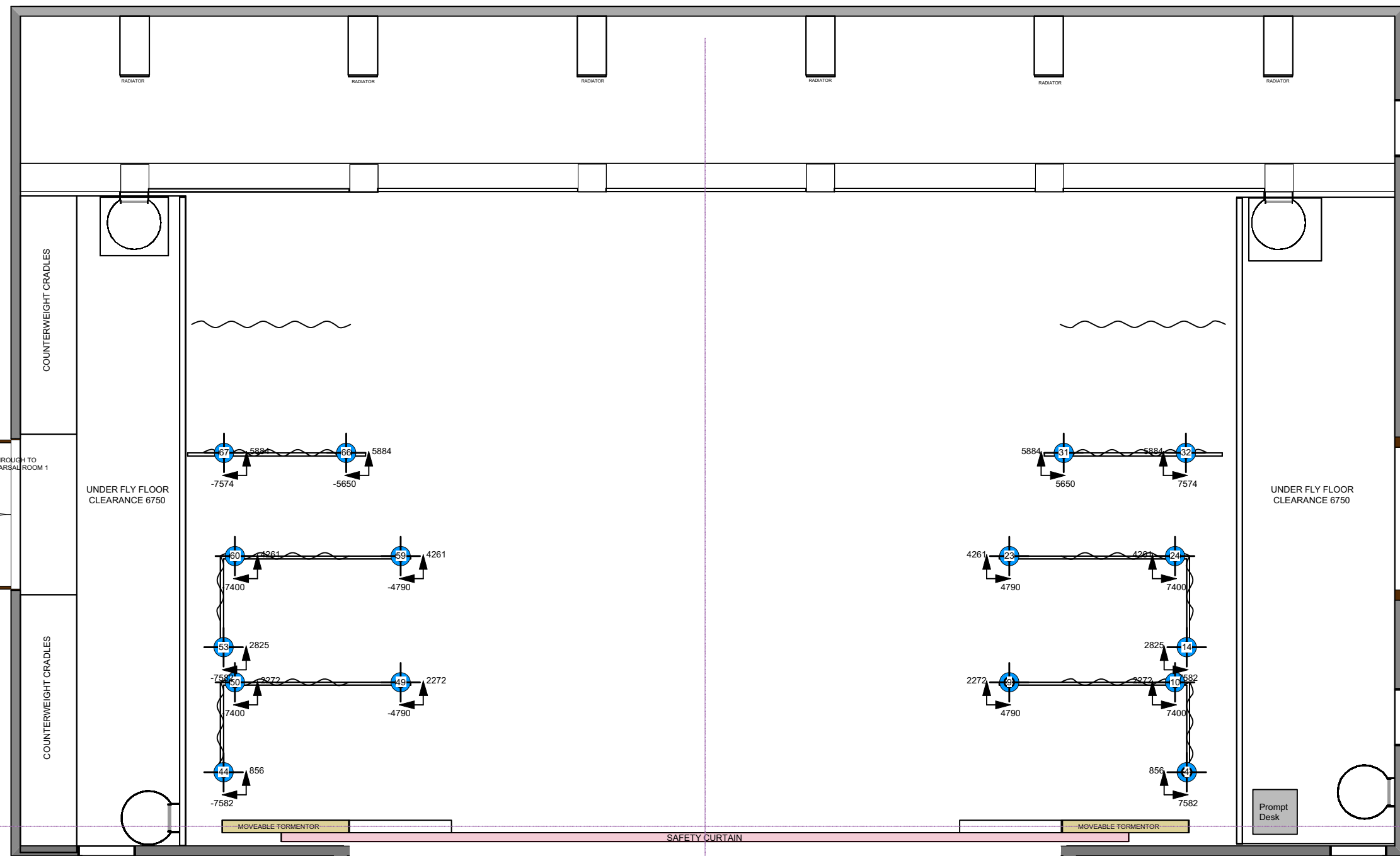
Steve Macluskie 0141 270 8257
 Simon Cook 0141 270 8108

Show Name Covid Ballet 2020		
Reference 1:75@A3	Drawn By Darren Wilson	Date 04/06/20
CAD File Name Hard Masking Points		

- LX 8
- 30
- 29
- 28
- 27
- 26
- 25
- 24
- BP Screen
- 23
- 22
- Aperture Black
- LX 7
- 21
- 20
- 19
- 18
- LX 6
- 17
- LX 5
- DP16
- Border
- LX 4
- DP15
- DP14
- Full Black
- Hemp Border
- LX 3
- DP12
- 11
- LX 2
- 10
- 9
- 8
- Border
- 7
- LX 1
- 4
- 3
- 2
- House Tabs
- House Border
- W

Points Key

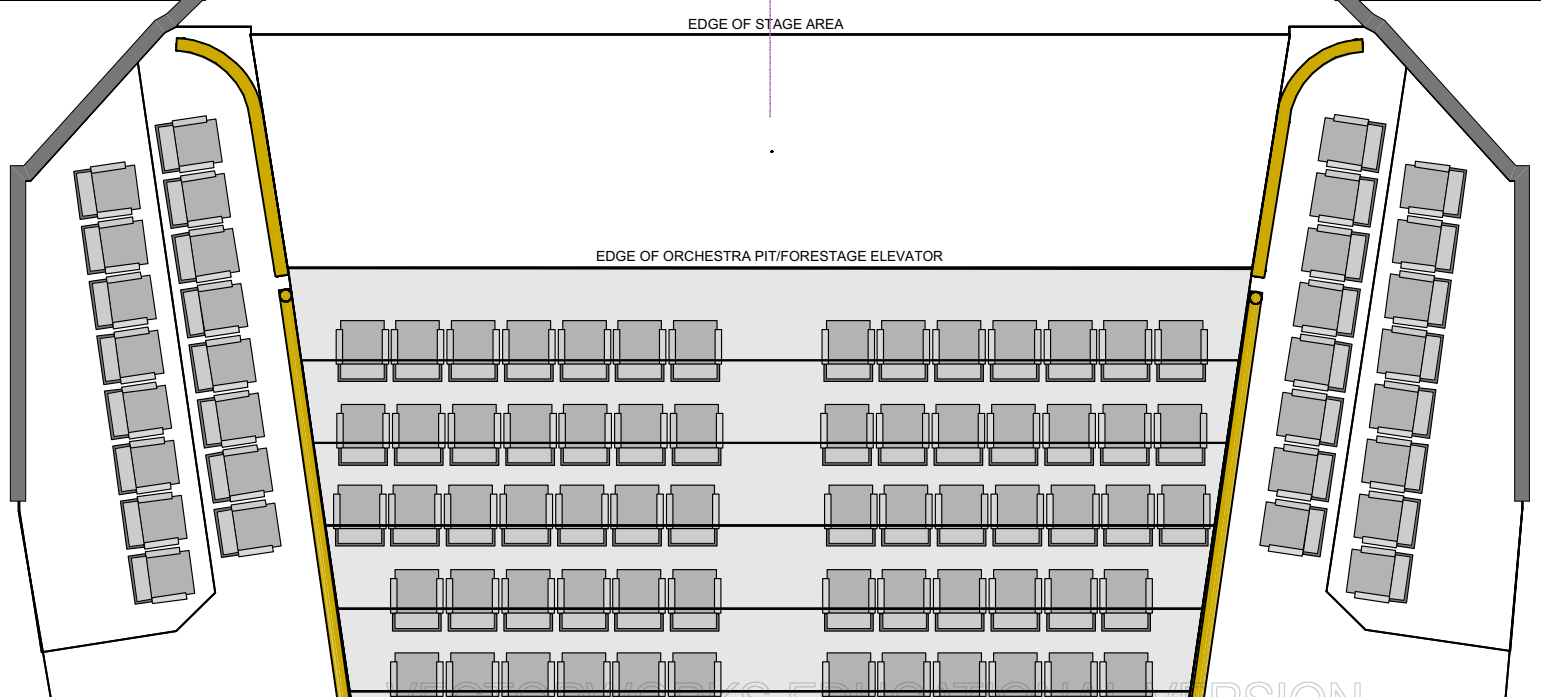
- Hard Masking (Hemp)
- Dog Leg (Hemp)
- Bar Pick-Up (Hemp)
- Hemp Bar (Hemp)
- LX Boom Support (Tension Line)
- LX Ladder Truss (BigTow)
- LX Ladder (Drift)
- LX Tripe Pick-Up (Hemp)
- FOH/ TSD Truss (Load Gaurd)
- Load Arrest



TECHNICAL DATA

Proscenium Opening	8 000mm - 11 200mm (w) x 7 180mm (h)
Setting Line to DIS of Rear Columns	10 000mm
Setting Line To Edge Of Stage	800mm
Setting Line To Edge of Forestage/Pit Elevator	3110mm
Depth of Forestage/Pit Elevator	2 310mm
Height of Stage from Stalls Level	910mm
Max Width of Stage	20 75 0mm
Width Between Fly Floors	16 550mm
Clearance To Underside of Fly Floors	6700mm
Height to Underside of Grid (Bar Travel)	15 500mm
Bar Width Counter Weights	11 500mm SWL 400kg UDL / 45kg PL
Bar Width DP Counter Weights	12 000mm SWL 370kg UDL / 50kg PL
Bar Width Hemp Sets	10 650mm SWL 50kg UDL

Get In Clearance Dimensions	Stage Left	2 250 (w) x 6 300 (h)
	Stage Right	2 350 (w) x 2 800 (h)



Updates
 14/8/18 Dimmer Info Formatting Fixed

Steve Macluskie 0141 270 8257
 Simon Cook 0141 270 8108

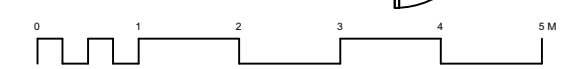
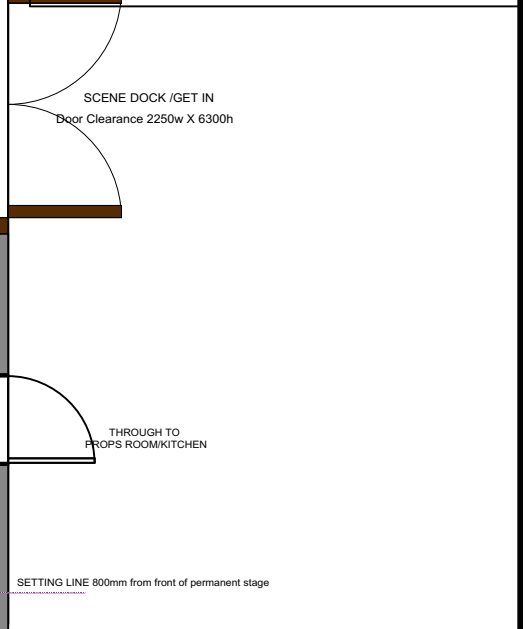
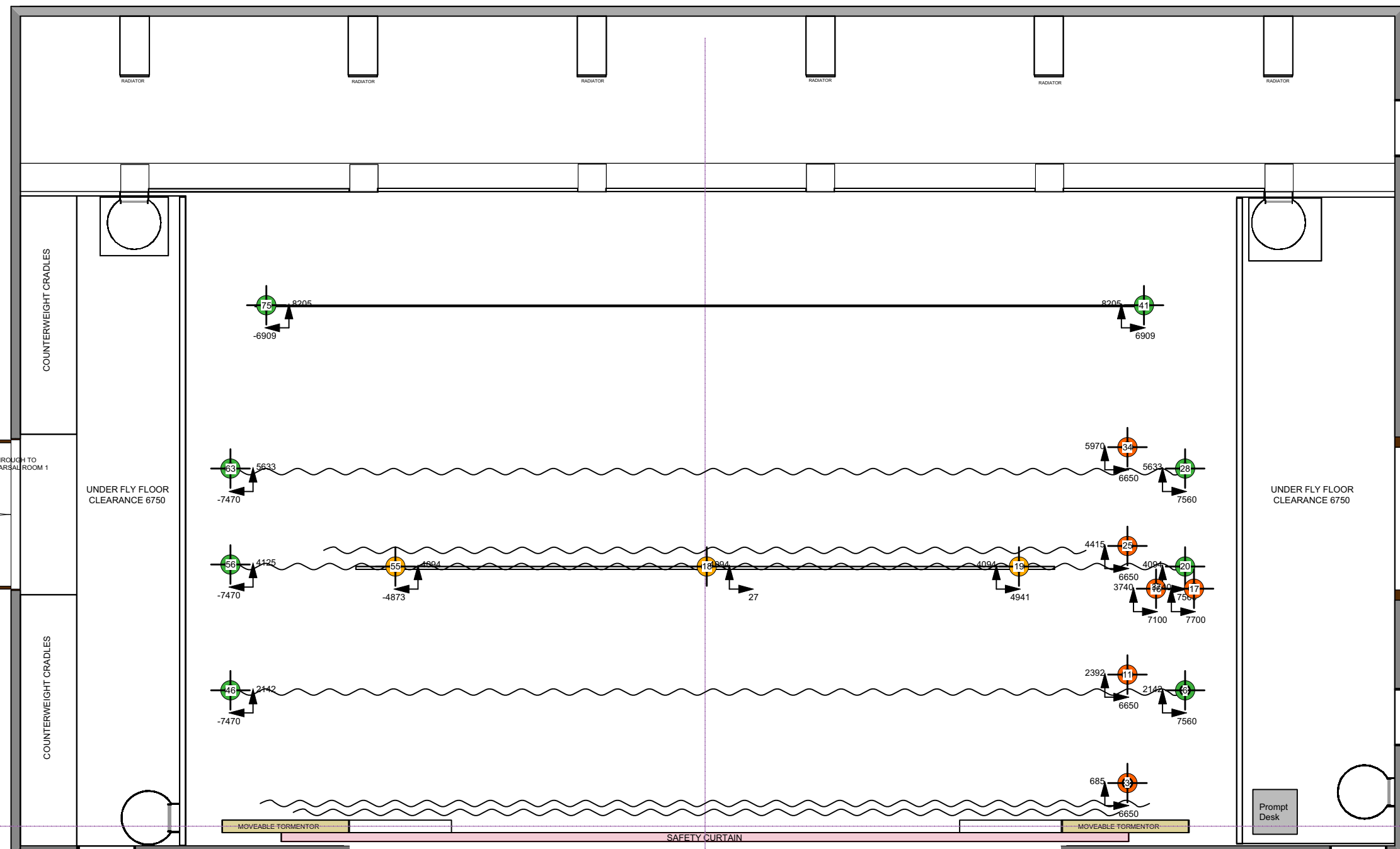
Show Name Covid Ballet 2020		
Reference 1:75@A3	Drawn By Darren Wilson	Date 04/06/20
CAD File Name Soft Masking Points		

- LX 8
- 30
- 29
- 28
- 27
- 26
- 25
- 24
- BP Screen
- 23
- 22
- Aperture Black
- LX 7
- 21
- 20
- 19
- 18
- LX 6
- 17
- LX 5
- DP16
- Border
- LX 4
- DP15
- DP14
- Full Black
- Hemp Border
- LX 3
- DP12
- 11
- LX 2
- 10
- 9
- 8
- Border
- 7
- LX 1
- 4
- 3
- 2
- House Tabs
- House Border
- 1
- W

To Rear Scene Dock

Points Key

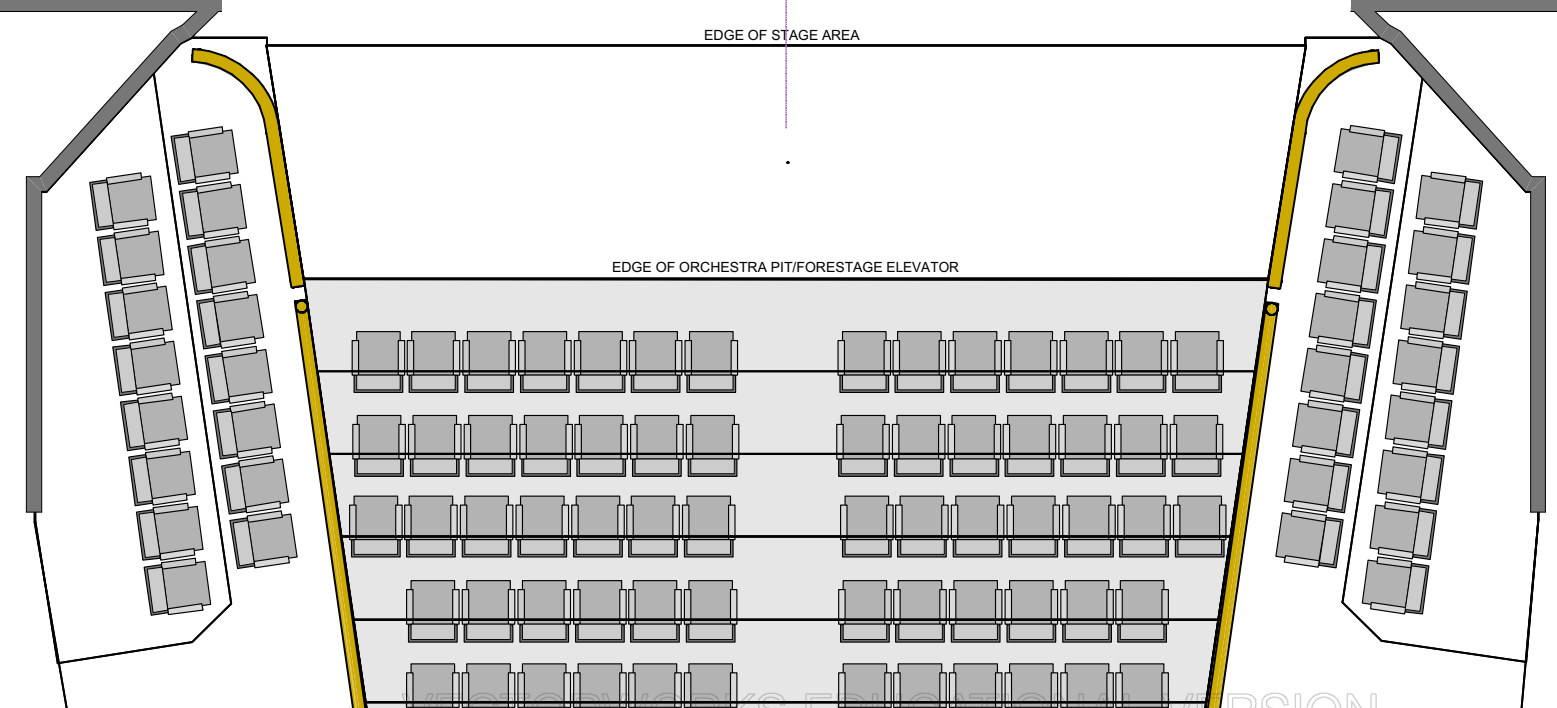
- Hard Masking (Hemp)
- Dog Leg (Hemp)
- Bar Pick-Up (Hemp)
- Hemp Bar (Hemp)
- LX Boom Support (Tension Line)
- LX Ladder Truss (BigTow)
- LX Ladder (Drift)
- LX Tripe Pick-Up (Hemp)
- FOH/ TSD Truss (Load Gaurd)
- Load Arrest



TECHNICAL DATA

Proscenium Opening	8 000mm - 11 200mm (w) x 7 180mm (h)
Setting Line to DIS of Rear Columns	10 000mm
Setting Line To Edge Of Stage	800mm
Setting Line To Edge of Forestage/Pit Elevator	3110mm
Depth of Forestage/Pit Elevator	2 310mm
Height of Stage from Stalls Level	910mm
Max Width of Stage	20 75 0mm
Width Between Fly Floors	16 550mm
Clearance To Underside of Fly Floors	6700mm
Height to Underside of Grid (Bar Travel)	15 500mm
Bar Width Counter Weights	11 500mm SWL 400kg UDL / 45kg PL
Bar Width DP Counter Weights	12 000mm SWL 370kg UDL / 50kg PL
Bar Width Hemp Sets	10 650mm SWL 50kg UDL

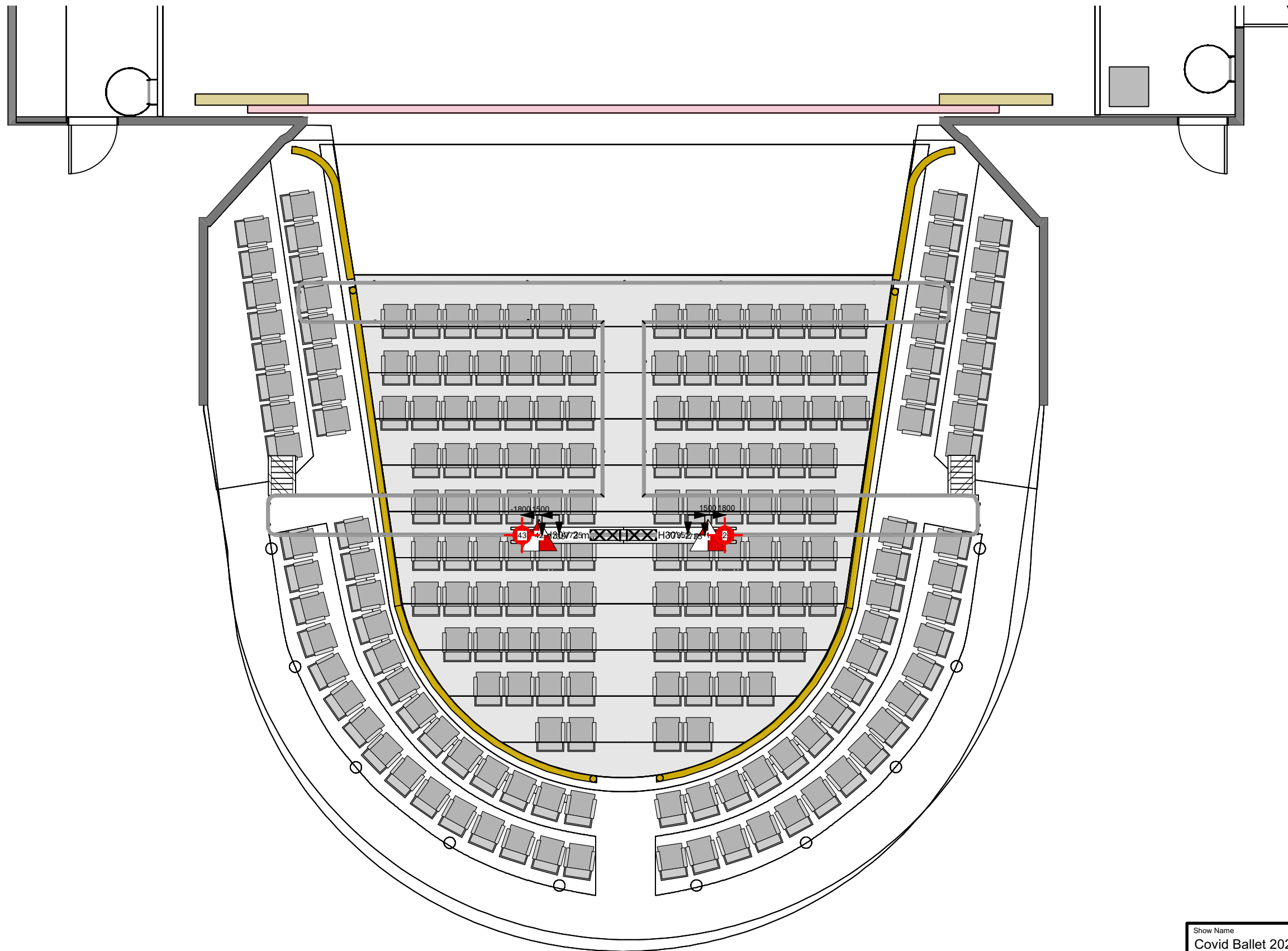
Get In Clearance Dimensions	Stage Left	2 250 (w) x 6 300 (h)
	Stage Right	2 350 (w) x 2 800 (h)



Updates
 14/8/18 Dimmer Info Formatting Fixed

Steve Macluskie 0141 270 8257
 Simon Cook 0141 270 8108

Show Name Covid Ballet 2020		
Reference 1:75@A3	Drawn By Darren Wilson	Date 04/06/20
CAD File Name Pick Up/ Hemp Bar Points		



Show Name Covid Ballet 2020		
Reference 1:75@A3	Drawn By Darren Wilson	Date 04/06/20
CAD File Name FOH Truss Points		