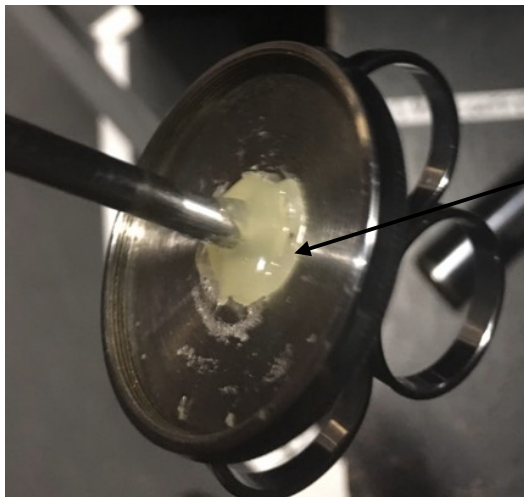


Creating a Cattle Syringe

1. Start with a syringe of the required size and a fake needle
2. Solder fake needle into place. (solder the front and the back, if it doesn't hold properly use lx tape, either same colour or paint the tape to look the same)
3. If plunger needs to be at a fixed position put the plunger into the syringe at the length you want and use a glue gun to fix it in place.
4. If the plunger doesn't fit inside the body of the syringe use an angler grinder to cut off the excess.



Needle soldered in place



Plunger glued in place